

# Converting Colors

Android(4290091684)

Have a look what the booklet for  
Android(4290091684) contains.

<b>Android(4290091684)</b> .....	3
<i><b>Conversions</b></i> .....	4
<i><b>Details</b></i> .....	6
<i><b>Harmonies</b></i> .....	11
<i><b>Previews</b></i> .....	23
<i><b>Color Blindness Simulation</b></i> .....	26
<i><b>CSS Examples</b></i> .....	29

# **Color**

**Android(4290091684)**

# Conversions

## Conversions Part 1

<b>Format</b>	<b>Color</b>
Hex	<a href="#">B59AA4</a>
RGB	<a href="#">181, 154, 164</a>
RGB Percent	<a href="#">71%, 60%, 64%</a>
CMY	<a href="#">0.2902, 0.3961, 0.3569</a>
CMYK	<a href="#">0.00, 0.15, 0.09, 0.29</a>
HSL	<a href="#">338°, 15%, 66%</a>
HSV	<a href="#">338°, 15%, 71%</a>
XYZ	<a href="#">37.3125, 35.6153, 40.0298</a>
YIQ	<a href="#">163.2130, 12.8820, 8.8340</a>

# Conversions

## Conversions Part 2

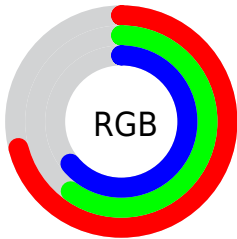
<b>Format</b>	<b>Color</b>
<b>RYB</b>	181, 154, 164
Decimal	11901604
CIELab	66.22, 11.69, -1.51
CIELCh	66, 11.787, 352.649
Yxy	35.6153, 0.3303, 0.3153
Android (android.graphics.Color)	4290091684 (0xFFB59AA4)
YUV	163.2130, 0.3880, 15.5992
Hunter-Lab	59.6786, 7.1651, 2.0058

# Details

The Android color `4290091684` is a light color, and the websafe version is hex `CC9999`. A complement of this color would be `4288329131`, and the grayscale version is `4288914339`.

A 20% lighter version of the original color is `4293775579`, and `4286605168` is the 20% darker color. If you saturate the color by 10%, you get `4290087065`, and if you desaturate by 10%, it is `4290096303`.

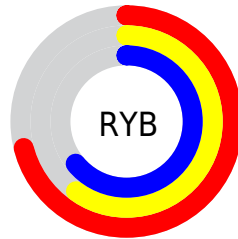
# Distribution



Red (71%)

Green (60%)

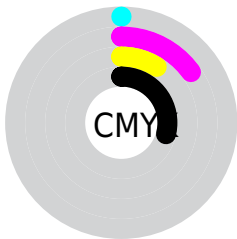
Blue (64%)



Red (71%)

Yellow (60%)

Blue (64%)

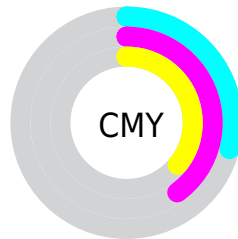


Cyan (0%)

Magenta (15%)

Yellow (9%)

Black (29%)



Cyan (29%)

Magenta (40%)

Yellow (36%)

# Brightness & Saturation Gradients

These gradients show how the Android color 4290091684 changes by changing the brightness by 10 percent. The first figure shows a shift by +10% for each color and the second figure -10%.

Similar to the brightness gradients but the following saturation gradients show a change of the Android color 4290091684 by changing the saturation by 10% instead.



 4290091684

 4290091684

4294967295

 4288315530

 4293775579

 4286605168

 4294962679

 4284960600

 4283316289

 4281803307

 4280421654

 4278190080

 4290091684

 4290091684

 4290087065

 4290096303

 4290082445

 4290100923

 4290077826

 4290105542

 4290073206

 4290110162

 4290068331

 4290114781

 4290063712

 4290117608

 4290059092

 4290117620

 4290054473

 4290117631

 4290052163

# Harmonies

## Analogous

The Analogous color harmony consists of three colors that are next to each other on the color wheel.



4289502382



4290091684



4290288281

# Triad

The Triadic color harmony groups three colors that are evenly spaced from another and form a triangle on the color wheel.



4290091684



4288783245



4287211185

# Complementary

The Complementary color scheme is a pair of colors which are on the opposite of each other on the color wheel.



4290091684



4288329131

# Split Complementary

Split-complementary colors differ from the complementary color scheme. The scheme consists of three colors, the original color and two neighbors of the complement color.



4287014825



4290091684



4287997588

# Square

The Square scheme is like the rectangle color scheme, but the four colors are evenly spaced on the color wheel.



4290091684



4289503116



4287342494



4287865782

# Rectangle

The Rectangle color scheme consists of four colors that form a rectangle on the color wheel.



4290091684



4290157459



4287342494



4287080111



# Sweetspot

The Sweet Spot groups the original color and five complimentary colors.



4290091684



4293648869



4289436341



4285886322



4294309365



4285887861



# Same Dimension

The Same Dimension uses a secret algorithm to generate beautiful new colors.



4290091684



4293640400



4290092442



4284043348



4288217145



4279894025



# Inverse Universe

The Inverse Universe completely reimagines the original color for something new.



4290091684



4293640400



4288328373



4284043348



4288217145

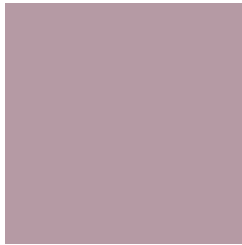


4279894025



# Previews

## White Background



This preview shows how the Android color 4290091684 looks on a white background.

## Color Contrast Check

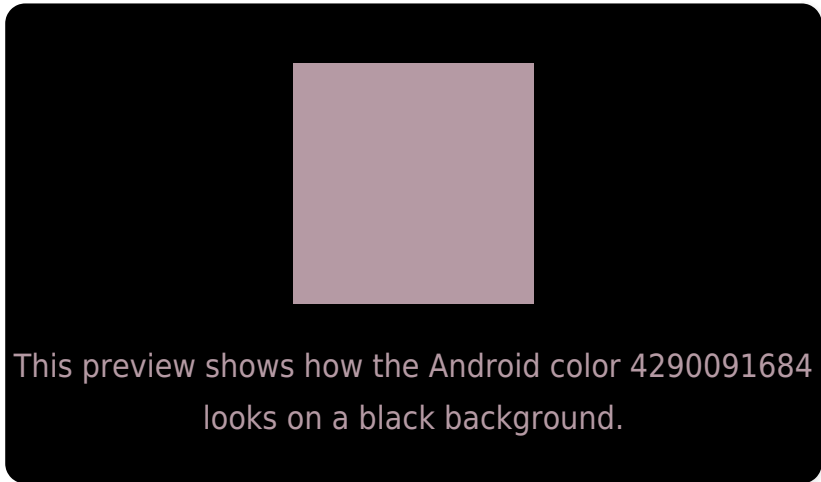
Large Text (above 18pt) WCAG AA × Fail

Any Text WCAG AA × Fail

Large Text (above 18pt) WCAG AAA × Fail

Any Text WCAG AAA × Fail

# Black Background



## Color Contrast Check

Large Text (above 18pt) WCAG AA ✓ Pass

Any Text WCAG AA ✓ Pass

Large Text (above 18pt) WCAG AAA ✓ Pass

Any Text WCAG AAA ✓ Pass

If you want to check with other color combinations, try the [Color Contrast Checker](#).



# Android 4290091684 Background



This preview shows how black text looks on a background with the Android color 4290091684.



This preview shows how white text looks on a background with the Android color 4290091684.

# Color Blindness Simulation

Color vision deficiency is a very complex topic, and I could not describe the different causes any better than Wikipedia does, so if you want to learn more, you should check out their [article about color blindness](#).

## Dichromacy



**Original Color**

4290091684

**Protanopia**

4288848040

**Deuteranopia**

4289698980



**Tritanopia**  
4290091686

# Trichromacy



**Original Color**  
4290091684

**Protanomaly**  
4289306279

**Deuteranomaly**  
4289829796

**Tritanomaly**  
4290091685

# Monochromacy



**Original Color**  
4290091684

**Achromatopsia**  
4288914339

**Achromatomaly**  
4289372323

# CSS Examples

## Text

The CSS property to change the color of the text to Android 4290091684 is called "color". The color property can be set on classes, ids or directly on the HTML element.

This example shows how text in the color `rgb(181, 154, 164)` looks like.

```
.text, #text, p{  
    color:rgb(181, 154, 164)  
}
```

If you want to add a text shadow in that color use the text-shadow property, you can generate a text shadow directly with our [CSS Text Shadow Generator](#).

Here you see how black text with a 4 pixel rgb(181, 154, 164) colored shadow looks like.

```
.shadow{ text-shadow: 4px 4px 2px rgb(181, 154, 164) }
```

## Border

The CSS property to change the border of an element to Android 4290091684 is called "border". The border property can be set on classes, ids or directly on the HTML element.

This example shows the color as border, it can be applied via the CSS property "border" or "border-color".

```
.border, #border, table{ border:4px solid rgb(181, 154, 164) }
```

If only the border color should be changed use the property `border-color`.

```
.border{ border-color:rgb(181, 154, 164) }
```

If you want to add a box shadow in that color use:

Here you see how a box with a 4 pixel `rgb(181, 154, 164)` colored shadow looks like.

```
.boxshadow{ -moz-box-shadow:4px 4px 4px  
4px rgb(181, 154, 164); -webkit-box-  
shadow:4px 4px 4px 4px rgb(181, 154, 164);  
box-shadow:4px 4px 4px 4px rgb(181, 154,  
164) }
```

# Background

The CSS property to change the background color of an element to Android 4290091684 is called "background". The background property can be set on classes, ids or directly on the HTML element.

```
.background, #background, body{  
background: rgb(181, 154, 164) }
```

If only the background color should be changed can be used:

```
.background{ background-color: rgb(181,  
154, 164) }
```

This example shows the color as background, it is applied via the CSS property "background".

To optimize and compress your CSS code, you can use our [online CSS compressor and optimizer](#) based on csstidy. If you want to create a linear or radial gradient as background or border, check our [CSS Gradient Generator](#).



Hey! You found this booklet interesting? Support Converting Colors with the new Membership Option!

The pro membership hides all ads, plus gives you double the colors in the color bucket, and more awesome pro features!

**[Learn more, Memberships starting at \\$2.50/m!](#)**

**Follow me  
on Twitter!**

@ConvertingColor