

Converting Colors

Android(4290092442)

Have a look what the booklet for
Android(4290092442) contains.

Android(4290092442)	3
<i>Conversions</i>	4
<i>Details</i>	6
<i>Harmonies</i>	11
<i>Previews</i>	23
<i>Color Blindness Simulation</i>	26
<i>CSS Examples</i>	29

Color

Android(4290092442)

Conversions

Conversions Part 1

Format	Color
Hex	B59D9A
RGB	181, 157, 154
RGB Percent	71%, 62%, 60%
CMY	0.2902, 0.3843, 0.3961
CMYK	0.00, 0.13, 0.15, 0.29
HSL	7°, 15%, 66%
HSV	7°, 15%, 71%
XYZ	36.9458, 36.2708, 35.6256
YIQ	163.8340, 15.2670, 4.1550

Conversions

Conversions Part 2

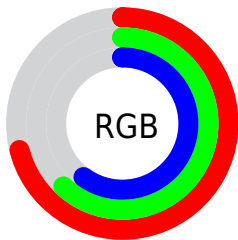
Format	Color
RYB	181, 157, 154
Decimal	11902362
CIELab	66.73, 8.33, 4.82
CIElCh	67, 9.618, 30.051
Yxy	36.2708, 0.3394, 0.3332
Android (android.graphics.Color)	4290092442 (0xFFB59D9A)
YUV	163.8340, -4.8482, 15.0546
Hunter-Lab	60.2252, 4.1084, 7.0853

Details

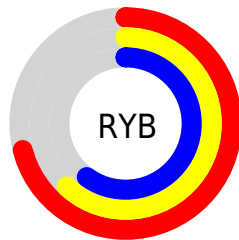
The Android color `4290092442` is a light color, and the websafe version is hex `999999`. A complement of this color would be `4288328373`, and the grayscale version is `4288980132`.

A 20% lighter version of the original color is `4293776592`, and `4286605927` is the 20% darker color. If you saturate the color by 10%, you get `4290088328`, and if you desaturate by 10%, it is `4290096556`.

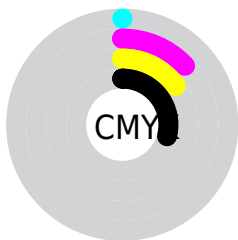
Distribution



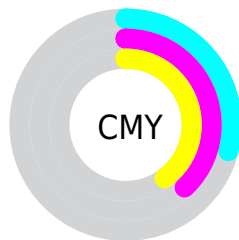
- Red (71%)
- Green (62%)
- Blue (60%)



- Red (71%)
- Yellow (62%)
- Blue (60%)



- Cyan (0%)
- Magenta (13%)
- Yellow (15%)
- Black (29%)



- Cyan (29%)
- Magenta (38%)
- Yellow (40%)

Brightness & Saturation Gradients

These gradients show how the Android color 4290092442 changes by changing the brightness by 10 percent. The first figure shows a shift by +10% for each color and the second figure -10%.

Similar to the brightness gradients but the following saturation gradients show a change of the Android color 4290092442 by changing the saturation by 10% instead.



4290092442



4290092442

4294967295



4288316288



4293776592



4286605927



4294963437



4284961359



4283317048



4281804067



4280422413



4278190080



4290092442



4290092442



4290088328



4290096556

 4290084214

 4290100670

 4290080100

 4290104784

 4290075986

 4290108898

 4290071871

 4290113012

 4290067501

 4290117375

 4290063387

 4290117631

 4290059273

 4290057216

Harmonies

Analogous

The Analogous color harmony consists of three colors that are next to each other on the color wheel.



4290026915



4290092442



4289830804

Triad

The Triadic color harmony groups three colors that are evenly spaced from another and form a triangle on the color wheel.



4290092442



4288063385



4288258995

Complementary

The Complementary color scheme is a pair of colors which are on the opposite of each other on the color wheel.



4290092442



4288328373

Split Complementary

Split-complementary colors differ from the complementary color scheme. The scheme consists of three colors, the original color and two neighbors of the complement color.



4287735473



4290092442



4287604898

Square

The Square scheme is like the rectangle color scheme, but the four colors are evenly spaced on the color wheel.



4290092442



4288717971



4287473579



4288979121

Rectangle

The Rectangle color scheme consists of four colors that form a rectangle on the color wheel.



4290092442



4289503633



4287473579



4288062643

Sweetspot

The Sweet Spot groups the original color and five complimentary colors.



4290092442



4293649121



4290091698



4285886575



4294309365



4285887861

Same Dimension

The Same Dimension uses a secret algorithm to generate beautiful new colors.



4290092442



4293641664



4290095770



4284043600



4288221440



4279894784

Inverse Universe

The Inverse Universe completely reimagines the original color for something new.



4288328373



4290832107



4288325045



4283455577



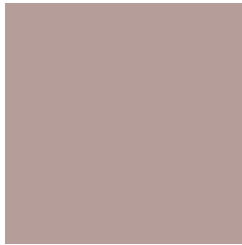
4278225049



4278195994

Previews

White Background



This preview shows how the Android color 4290092442 looks on a white background.

Color Contrast Check

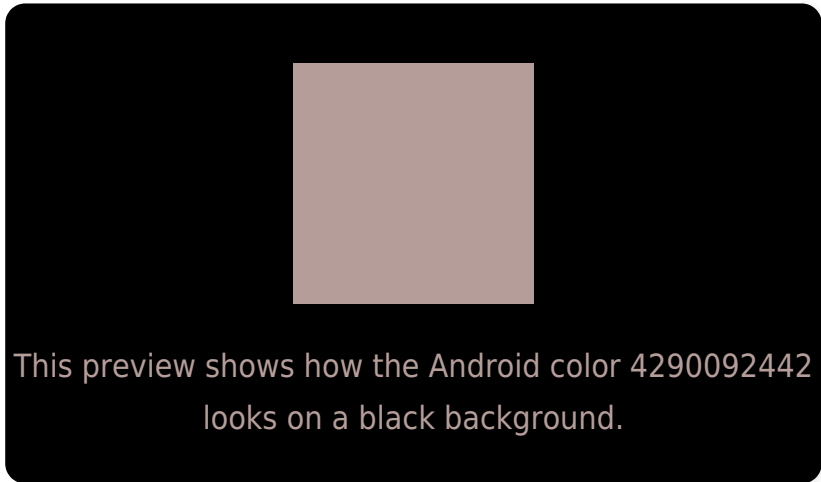
Large Text (above 18pt) WCAG AA × Fail

Any Text WCAG AA × Fail

Large Text (above 18pt) WCAG AAA × Fail

Any Text WCAG AAA × Fail

Black Background



Color Contrast Check

Large Text (above 18pt) WCAG AA ✓ Pass

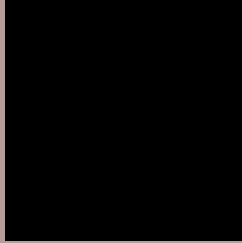
Any Text WCAG AA ✓ Pass

Large Text (above 18pt) WCAG AAA ✓ Pass

Any Text WCAG AAA ✓ Pass

If you want to check with other color combinations, try the [Color Contrast Checker](#).

Android 4290092442 Background



This preview shows how black text looks on a background with the Android color 4290092442.



This preview shows how white text looks on a background with the Android color 4290092442.

Color Blindness Simulation

Color vision deficiency is a very complex topic, and I could not describe the different causes any better than Wikipedia does, so if you want to learn more, you should check out their [article about color blindness](#).

Dichromacy



Original Color

4290092442

Protanopia

4289176221

Deuteranopia

4290092442

Trichromacy



Original Color
4290092442

Protanomaly
4289503388

Deuteranomaly
4290092442

Tritanomaly
4290157730

Monochromacy



Original Color
4290092442

Achromatopsia
4288980132

Achromatomaly
4289372576

CSS Examples

Text

The CSS property to change the color of the text to Android 4290092442 is called "color". The color property can be set on classes, ids or directly on the HTML element.

This example shows how text in the color `rgb(181, 157, 154)` looks like.

```
.text, #text, p{  
    color:rgb(181, 157, 154)  
}
```

If you want to add a text shadow in that color use the text-shadow property, you can generate a text shadow directly with our [CSS Text Shadow Generator](#).

Here you see how black text with a 4 pixel rgb(181, 157, 154) colored shadow looks like.

```
.shadow{ text-shadow: 4px 4px 2px rgb(181, 157, 154) }
```

Border

The CSS property to change the border of an element to Android 4290092442 is called "border". The border property can be set on classes, ids or directly on the HTML element.

This example shows the color as border, it can be applied via the CSS property "border" or "border-color".

```
.border, #border, table{ border:4px solid rgb(181, 157, 154) }
```

If only the border color should be changed use the property border-color.

```
.border{ border-color:rgb(181, 157, 154) }
```

If you want to add a box shadow in that color use:

Here you see how a box with a 4 pixel rgb(181, 157, 154) colored shadow looks like.

```
.boxshadow{ -moz-box-shadow:4px 4px 4px  
4px rgb(181, 157, 154); -webkit-box-  
shadow:4px 4px 4px 4px rgb(181, 157, 154);  
box-shadow:4px 4px 4px 4px rgb(181, 157,  
154) }
```

Background

The CSS property to change the background color of an element to Android 4290092442 is called "background". The background property can be set on classes, ids or directly on the HTML element.

```
.background, #background, body{  
background: rgb(181, 157, 154) }
```

If only the background color should be changed can be used:

```
.background{ background-color: rgb(181,  
157, 154) }
```

This example shows the color as background, it is applied via the CSS property "background".

To optimize and compress your CSS code, you can use our [online CSS compressor and optimizer](#) based on csstidy. If you want to create a linear or radial gradient as background or border, check our [CSS Gradient Generator](#).

Hey! You found this booklet interesting? Support Converting Colors with the new Membership Option!

The pro membership hides all ads, plus gives you double the colors in the color bucket, and more awesome pro features!

[Learn more, Memberships starting at \\$2.50/m!](#)

**Follow me
on Twitter!**

@ConvertingColor