

# Converting Colors

Android(4290092679)

Have a look what the booklet for  
Android(4290092679) contains.

<b>Android(4290092679)</b> .....	3
<b><i>Conversions</i></b> .....	4
<b><i>Details</i></b> .....	6
<b><i>Harmonies</i></b> .....	11
<b><i>Previews</i></b> .....	23
<b><i>Color Blindness Simulation</i></b> .....	26
<b><i>CSS Examples</i></b> .....	29

# **Color**

**Android(4290092679)**

# Conversions

## Conversions Part 1

<b>Format</b>	<b>Color</b>
Hex	B59E87
RGB	181, 158, 135
RGB Percent	71%, 62%, 53%
CMY	0.2902, 0.3804, 0.4706
CMYK	0.00, 0.13, 0.25, 0.29
HSL	30°, 24%, 62%
HSV	30°, 25%, 71%
XYZ	35.6561, 36.0267, 27.9962
YIQ	162.2550, 21.0910, -2.2770

# Conversions

## Conversions Part 2

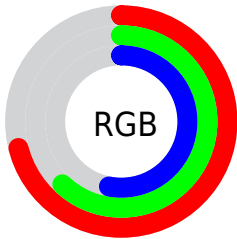
Format	Color
<a href="#">RYB</a>	<a href="#">181, 181, 135</a>
Decimal	<a href="#">11902599</a>
CIELab	<a href="#">66.54, 4.83, 15.13</a>
CIElCh	<a href="#">67, 15.886, 72.298</a>
Yxy	<a href="#">36.0267, 0.3577, 0.3614</a>
Android (android.graphics.Color)	<a href="#">4290092679 (0xFFB59E87)</a>
YUV	<a href="#">162.2550, -13.4367, 16.4394</a>
Hunter-Lab	<a href="#">60.0223, 0.9985, 14.3609</a>

# Details

The Android color `4290092679` is a light color, and the websafe version is hex `999999`. A complement of this color would be `4287078069`, and the grayscale version is `4288848546`.

A 20% lighter version of the original color is `4293776828`, and `4286606165` is the 20% darker color. If you saturate the color by 10%, you get `4290090357`, and if you desaturate by 10%, it is `4290095001`.

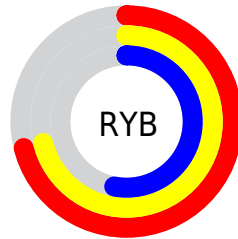
# Distribution



Red (71%)

Green (62%)

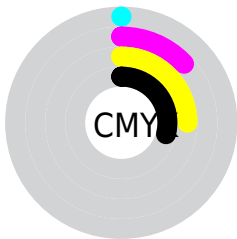
Blue (53%)



Red (71%)

Yellow (71%)

Blue (53%)

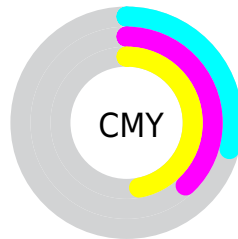


Cyan (0%)

Magenta (13%)

Yellow (25%)

Black (29%)



Cyan (29%)

Magenta (38%)

Yellow (47%)

# Brightness & Saturation Gradients

These gradients show how the Android color 4290092679 changes by changing the brightness by 10 percent. The first figure shows a shift by +10% for each color and the second figure -10%.

Similar to the brightness gradients but the following saturation gradients show a change of the Android color 4290092679 by changing the saturation by 10% instead.





4290092679



4290092679

4294967295



4288316526



4293776828



4286606165



4294963672



4284896062



4294967285



4283251752



4281738771



4280357120



4278190080



4290092679



4290092679



4290090357



4290095001

 4290088035

 4290097323

 4290085713

 4290099645

 4290083391

 4290101967

 4290081069

 4290104290

 4290078746

 4290106612

 4290076424

 4290108927

 4290075392

 4290111231

 4290113535

# Harmonies

## Analogous

The Analogous color harmony consists of three colors that are next to each other on the color wheel.



4290681487



4290092679



4289176454

# Triad

The Triadic color harmony groups three colors that are evenly spaced from another and form a triangle on the color wheel.



4290092679



4286491303



4289502391

# Complementary

The Complementary color scheme is a pair of colors which are on the opposite of each other on the color wheel.



4290092679



4287078069

# Split Complementary

Split-complementary colors differ from the complementary color scheme. The scheme consists of three colors, the original color and two neighbors of the complement color.



4288324029



4290092679



4286425524

# Square

The Square scheme is like the rectangle color scheme, but the four colors are evenly spaced on the color wheel.



4290092679



4287080857



4287145661



4290353579

# Rectangle

The Rectangle color scheme consists of four colors that form a rectangle on the color wheel.



4290092679



4288456330



4287145661



4289109690



# Sweetspot

The Sweet Spot groups the original color and five complimentary colors.



4290092679



4293648856



4290086814



4285886314



4294309365



4285887861



# Same Dimension

The Same Dimension uses a secret algorithm to generate beautiful new colors.



4290092679



4293642148



4290098567



4284044624



4288236800



4279897344



# Inverse Universe

The Inverse Universe completely reimagines the original color for something new.



4287078069



4288989163



4287072181



4283454809



4278209945

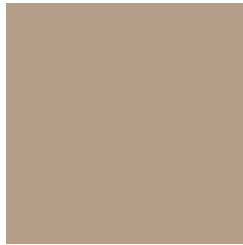


4278193434



# Previews

## White Background



This preview shows how the Android color 4290092679 looks on a white background.

## Color Contrast Check

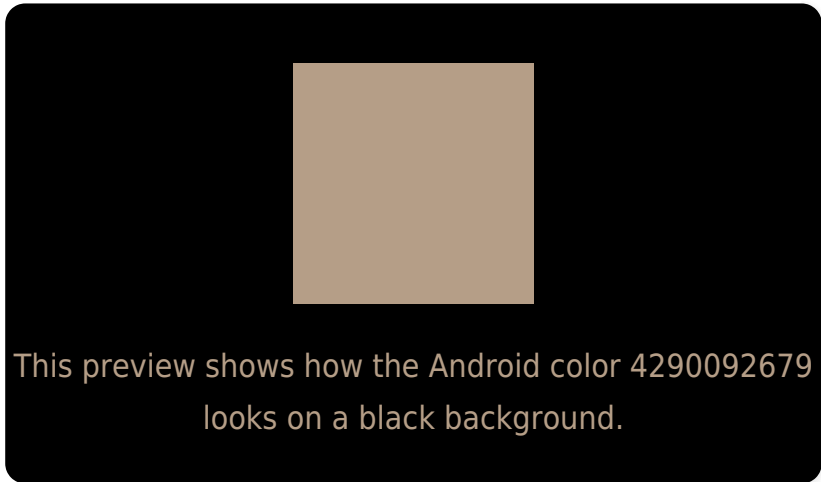
Large Text (above 18pt) WCAG AA × Fail

Any Text WCAG AA × Fail

Large Text (above 18pt) WCAG AAA × Fail

Any Text WCAG AAA × Fail

# Black Background



## Color Contrast Check

Large Text (above 18pt) WCAG AA ✓ Pass

Any Text WCAG AA ✓ Pass

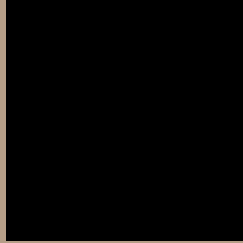
Large Text (above 18pt) WCAG AAA ✓ Pass

Any Text WCAG AAA ✓ Pass

If you want to check with other color combinations, try the [Color Contrast Checker](#).



# Android 4290092679 Background



This preview shows how black text looks on a background with the Android color 4290092679.



This preview shows how white text looks on a background with the Android color 4290092679.

# Color Blindness Simulation

Color vision deficiency is a very complex topic, and I could not describe the different causes any better than Wikipedia does, so if you want to learn more, you should check out their [article about color blindness](#).


## Dichromacy



**Original Color**  
4290092679

**Protanopia**  
4289438345

**Deuteranopia**  
4290485383



**Tritanopia**  
4290353830

# Trichromacy



**Original Color**  
4290092679

**Protanomaly**  
4289700232

**Deuteranomaly**  
4290354567

**Tritanomaly**  
4290288539

# Monochromacy



**Original Color**  
4290092679

**Achromatopsia**  
4288848546

**Achromatomaly**  
4289307032

# CSS Examples

## Text

The CSS property to change the color of the text to Android 4290092679 is called "color". The color property can be set on classes, ids or directly on the HTML element.

This example shows how text in the color `rgb(181, 158, 135)` looks like.

```
.text, #text, p{  
    color:rgb(181, 158, 135)  
}
```

If you want to add a text shadow in that color use the text-shadow property, you can generate a text shadow directly with our [CSS Text Shadow Generator](#).

Here you see how black text with a 4 pixel rgb(181, 158, 135) colored shadow looks like.

```
.shadow{ text-shadow: 4px 4px 2px rgb(181, 158, 135) }
```

## Border

The CSS property to change the border of an element to Android 4290092679 is called "border". The border property can be set on classes, ids or directly on the HTML element.

This example shows the color as border, it can be applied via the CSS property "border" or "border-color".

```
.border, #border, table{ border:4px solid rgb(181, 158, 135) }
```

If only the border color should be changed use the property `border-color`.

```
.border{ border-color:rgb(181, 158, 135) }
```

If you want to add a box shadow in that color use:

Here you see how a box with a 4 pixel `rgb(181, 158, 135)` colored shadow looks like.

```
.boxshadow{ -moz-box-shadow:4px 4px 4px  
4px rgb(181, 158, 135); -webkit-box-  
shadow:4px 4px 4px 4px rgb(181, 158, 135);  
box-shadow:4px 4px 4px 4px rgb(181, 158,  
135) }
```

# Background

The CSS property to change the background color of an element to Android 4290092679 is called "background". The background property can be set on classes, ids or directly on the HTML element.

```
.background, #background, body{  
background: rgb(181, 158, 135) }
```

If only the background color should be changed can be used:

```
.background{ background-color: rgb(181,  
158, 135) }
```

This example shows the color as background, it is applied via the CSS property "background".

To optimize and compress your CSS code, you can use our [online CSS compressor and optimizer](#) based on csstidy. If you want to create a linear or radial gradient as background or border, check our [CSS Gradient Generator](#).



Hey! You found this booklet interesting? Support Converting Colors with the new Membership Option!

The pro membership hides all ads, plus gives you double the colors in the color bucket, and more awesome pro features!

**[Learn more, Memberships starting at \\$2.50/m!](#)**

**Follow me  
on Twitter!**

@ConvertingColor