

Converting Colors

Android(4290096300)

Have a look what the booklet for
Android(4290096300) contains.

Android(4290096300)	3
<i>Conversions</i>	4
<i>Details</i>	6
<i>Harmonies</i>	11
<i>Previews</i>	23
<i>Color Blindness Simulation</i>	26
<i>CSS Examples</i>	29

Color

Android(4290096300)

Conversions

Conversions Part 1

Format	Color
Hex	B5ACAC
RGB	181, 172, 172
RGB Percent	71%, 67%, 67%
CMY	0.2902, 0.3255, 0.3255
CMYK	0.00, 0.05, 0.05, 0.29
HSL	0°, 6%, 69%
HSV	0°, 5%, 71%
XYZ	41.2550, 42.3074, 45.0215
YIQ	174.6910, 5.3640, 1.9080

Conversions

Conversions Part 2

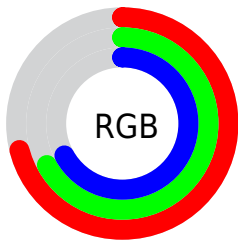
Format	Color
RYB	181, 172, 172
Decimal	11906220
CIELab	71.08, 3.22, 1.14
CIELCh	71, 3.415, 19.554
Yxy	42.3074, 0.3208, 0.3290
Android (android.graphics.Color)	4290096300 (0xFFB5ACAC)
YUV	174.6910, -1.3267, 5.5330
Hunter-Lab	65.0441, -0.6115, 4.4922

Details

The Android color `4290096300` is a light color, and the websafe version is hex `999999`. A complement of this color would be `4289508789`, and the grayscale version is `4289703855`.

A 20% lighter version of the original color is `4293780451`, and `4286609528` is the 20% darker color. If you saturate the color by 10%, you get `4290091674`, and if you desaturate by 10%, it is `4290100926`.

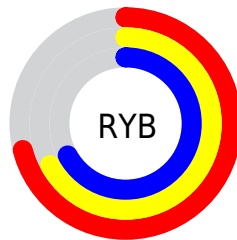
Distribution



Red (71%)

Green (67%)

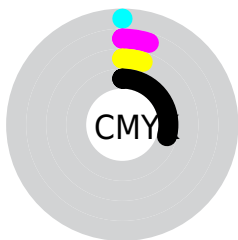
Blue (67%)



Red (71%)

Yellow (67%)

Blue (67%)

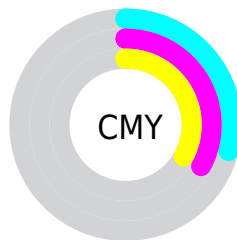


Cyan (0%)

Magenta (5%)

Yellow (5%)

Black (29%)



Cyan (29%)

Magenta (33%)

Yellow (33%)

Brightness & Saturation Gradients

These gradients show how the Android color 4290096300 changes by changing the brightness by 10 percent. The first figure shows a shift by +10% for each color and the second figure -10%.

Similar to the brightness gradients but the following saturation gradients show a change of the Android color 4290096300 by changing the saturation by 10% instead.

■ 4290096300

■ 4290096300

4294967295

■ 4288319889

■ 4293780451

■ 4286609528

■ 4284964703

■ 4283385671

■ 4281872689

■ 4280491036

■ 4279042305

■ 4278190080

■ 4290096300

■ 4290096300

 4290091674

 4290100926

 4290087048

 4290105552

 4290082422

 4290110178

 4290077796

 4290114804

 4290073170

 4290117631

 4290068287

 4290063661

 4290059035

 4290054409

Harmonies

Analogous

The Analogous color harmony consists of three colors that are next to each other on the color wheel.



4290030767



4290096300



4290030761

Triad

The Triadic color harmony groups three colors that are evenly spaced from another and form a triangle on the color wheel.



4290096300



4289441706



4289376180

Complementary

The Complementary color scheme is a pair of colors which are on the opposite of each other on the color wheel.



4290096300



4289508789

Split Complementary

Split-complementary colors differ from the complementary color scheme. The scheme consists of three colors, the original color and two neighbors of the complement color.



4289179571



4290096300



4289245357

Square

The Square scheme is like the rectangle color scheme, but the four colors are evenly spaced on the color wheel.



4290096300



4289638056



4289179824



4289572532

Rectangle

The Rectangle color scheme consists of four colors that form a rectangle on the color wheel.



4290096300



4289965480



4289179824



4289310644

Sweetspot

The Sweet Spot groups the original color and five complimentary colors.



4290096300



4293650664



4290096309



4285887604



4294309365



4285887861

Same Dimension

The Same Dimension uses a secret algorithm to generate beautiful new colors.



4290096300



4293647837



4290097580



4284044115



4288217088



4279894016

Inverse Universe

The Inverse Universe completely reimagines the original color for something new.



4289508789



4292733931



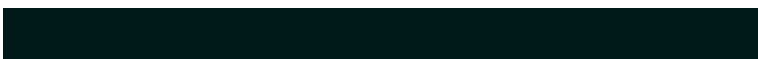
4289507765



4283652441



4278229401



4278196762

Previews

White Background



This preview shows how the Android color 4290096300 looks on a white background.

Color Contrast Check

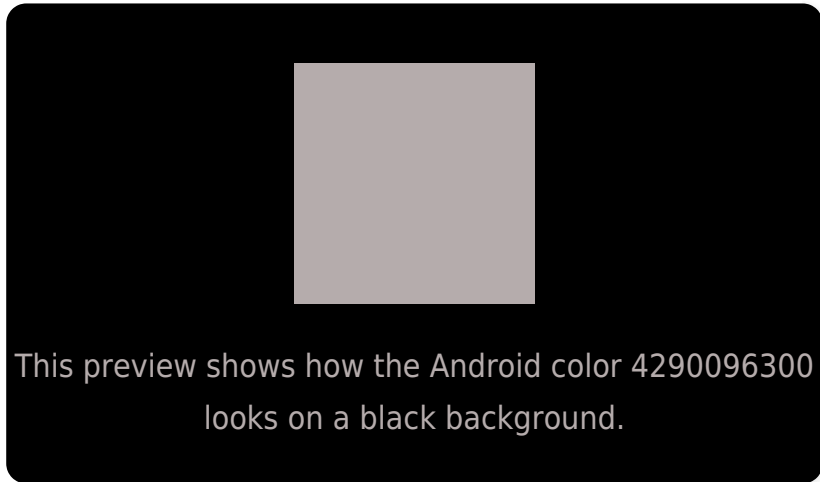
Large Text (above 18pt) WCAG AA × Fail

Any Text WCAG AA × Fail

Large Text (above 18pt) WCAG AAA × Fail

Any Text WCAG AAA × Fail

Black Background



Color Contrast Check

Large Text (above 18pt) WCAG AA ✓ Pass

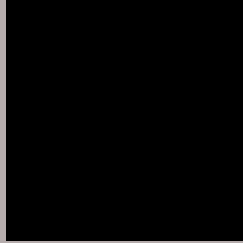
Any Text WCAG AA ✓ Pass

Large Text (above 18pt) WCAG AAA ✓ Pass

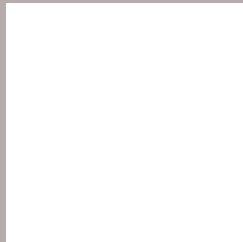
Any Text WCAG AAA ✓ Pass

If you want to check with other color combinations, try the [Color Contrast Checker](#).

Android 4290096300 Background



This preview shows how black text looks on a background with the Android color 4290096300.

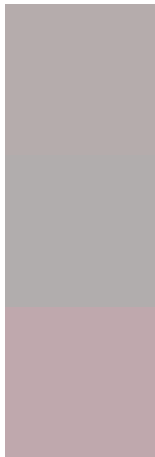


This preview shows how white text looks on a background with the Android color 4290096300.

Color Blindness Simulation

Color vision deficiency is a very complex topic, and I could not describe the different causes any better than Wikipedia does, so if you want to learn more, you should check out their [article about color blindness](#).

Dichromacy



Original Color
4290096300

Protanopia
4289834413

Deuteranopia
4290750637

Trichromacy



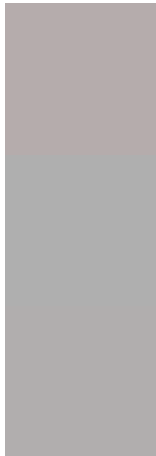
Original Color
4290096300

Protanomaly
4289899949

Deuteranomaly
4290488749

Tritanomaly
4290161588

Monochromacy



Original Color
4290096300

Achromatopsia
4289703855

Achromatomaly
4289834670

CSS Examples

Text

The CSS property to change the color of the text to Android 4290096300 is called "color". The color property can be set on classes, ids or directly on the HTML element.

This example shows how text in the color `rgb(181, 172, 172)` looks like.

```
.text, #text, p{  
    color:rgb(181, 172, 172)  
}
```

If you want to add a text shadow in that color use the text-shadow property, you can generate a text shadow directly with our [CSS Text Shadow Generator](#).

Here you see how black text with a 4 pixel rgb(181, 172, 172) colored shadow looks like.

```
.shadow{ text-shadow: 4px 4px 2px rgb(181, 172, 172) }
```

Border

The CSS property to change the border of an element to Android 4290096300 is called "border". The border property can be set on classes, ids or directly on the HTML element.

This example shows the color as border, it can be applied via the CSS property "border" or "border-color".

```
.border, #border, table{ border:4px solid rgb(181, 172, 172) }
```

If only the border color should be changed use the property `border-color`.

```
.border{ border-color:rgb(181, 172, 172) }
```

If you want to add a box shadow in that color use:

Here you see how a box with a 4 pixel `rgb(181, 172, 172)` colored shadow looks like.

```
.boxshadow{ -moz-box-shadow:4px 4px 4px  
4px rgb(181, 172, 172); -webkit-box-  
shadow:4px 4px 4px 4px rgb(181, 172, 172);  
box-shadow:4px 4px 4px 4px rgb(181, 172,  
172) }
```

Background

The CSS property to change the background color of an element to Android 4290096300 is called "background". The background property can be set on classes, ids or directly on the HTML element.

```
.background, #background, body{  
background: rgb(181, 172, 172) }
```

If only the background color should be changed can be used:

```
.background{ background-color: rgb(181,  
172, 172) }
```

This example shows the color as background, it is applied via the CSS property "background".

To optimize and compress your CSS code, you can use our [online CSS compressor and optimizer](#) based on csstidy. If you want to create a linear or radial gradient as background or border, check our [CSS Gradient Generator](#).

Hey! You found this booklet interesting? Support Converting Colors with the new Membership Option!

The pro membership hides all ads, plus gives you double the colors in the color bucket, and more awesome pro features!

[Learn more, Memberships starting at \\$2.50/m!](#)

**Follow me
on Twitter!**

@ConvertingColor