

Converting Colors

Android(4290147661)

Have a look what the booklet for
Android(4290147661) contains.

Android(4290147661)	3
<i>Conversions</i>	4
<i>Details</i>	6
<i>Harmonies</i>	11
<i>Previews</i>	23
<i>Color Blindness Simulation</i>	26
<i>CSS Examples</i>	29

Color

Android(4290147661)

Conversions

Conversions Part 1

Format	Color
Hex	B6754D
RGB	182, 117, 77
RGB Percent	71%, 46%, 30%
CMY	0.2863, 0.5412, 0.6980
CMYK	0.00, 0.36, 0.58, 0.29
HSL	23°, 42%, 51%
HSV	23°, 58%, 71%
XYZ	26.9922, 23.2035, 10.0773
YIQ	131.8750, 51.5800, 1.3400

Conversions

Conversions Part 2

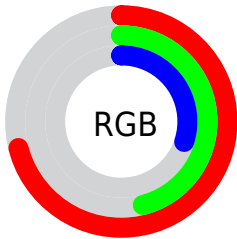
Format	Color
R _Y B	182, 142, 77
Decimal	11957581
CIE Lab	55.28, 21.41, 32.43
CIE LCh	55, 38.859, 56.575
Yxy	23.2035, 0.4478, 0.3850
Android (android.graphics.Color)	4290147661 (0xFFB6754D)
YUV	131.8750, -27.0534, 43.9596
Hunter-Lab	48.1700, 15.7257, 21.3154

Details

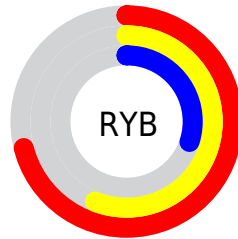
The Android color **4290147661** is a dark color, and the websafe version is hex **996633**. A complement of this color would be **4283272886**, and the grayscale version is **4286874756**.

A 20% lighter version of the original color is **4294027647**, and **4286399519** is the 20% darker color. If you saturate the color by 10%, you get **4290144827**, and if you desaturate by 10%, it is **4290150495**.

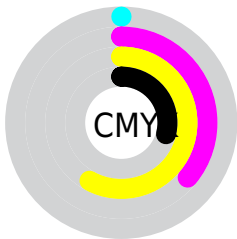
Distribution



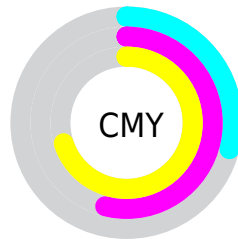
- Red (71%)
- Green (46%)
- Blue (30%)



- Red (71%)
- Yellow (56%)
- Blue (30%)



- Cyan (0%)
- Magenta (36%)
- Yellow (58%)
- Black (29%)



- Cyan (29%)
- Magenta (54%)
- Yellow (70%)

Brightness & Saturation Gradients

These gradients show how the Android color 4290147661 changes by changing the brightness by 10 percent. The first figure shows a shift by +10% for each color and the second figure -10%.

Similar to the brightness gradients but the following saturation gradients show a change of the Android color 4290147661 by changing the saturation by 10% instead.



4290147661



4290147661

4294967295



4288240694



4294027647



4286399519



4294952345



4284624136



4294959540



4282849024



4294966992



4281139456



4294967276



4278386688



4278190080



4290147661



4290147661



4290144827



4290150495

■ 4290141737

■ 4290153585

■ 4290138902

■ 4290156420

■ 4290136068

■ 4290159254

■ 4290135296

■ 4290162088

■ 4290165178

■ 4290168012

■ 4290170847

■ 4290173681

Harmonies

Analogous

The Analogous color harmony consists of three colors that are next to each other on the color wheel.



4291062632



4290147661



4288446784

Triad

The Triadic color harmony groups three colors that are evenly spaced from another and form a triangle on the color wheel.



4290147661



4278490495



4286676417

Complementary

The Complementary color scheme is a pair of colors which are on the opposite of each other on the color wheel.



4290147661



4283272886

Split Complementary

Split-complementary colors differ from the complementary color scheme. The scheme consists of three colors, the original color and two neighbors of the complement color.



4282550727



4290147661



4278228385

Square

The Square scheme is like the rectangle color scheme, but the four colors are evenly spaced on the color wheel.



4290147661



4283601502



4278227388



4289425578

Rectangle

The Rectangle color scheme consists of four colors that form a rectangle on the color wheel.



4290147661



4287072322



4278227388



4285497797

Sweetspot

The Sweet Spot groups the original color and five complimentary colors.



4290147661



4293776581



4290137487



4286081376



4294440951



4286085240

Same Dimension

The Same Dimension uses a secret algorithm to generate beautiful new colors.



4290147661



4293757002



4290160717



4284241491



4288428800



4280027904

Inverse Universe

The Inverse Universe completely reimagines the original color for something new.



4283272886



4283084781



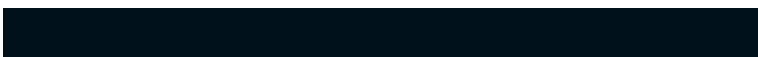
4283259830



4283652188



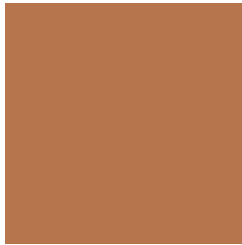
4278214812



4278194460

Previews

White Background



This preview shows how the Android color 4290147661 looks on a white background.

Color Contrast Check

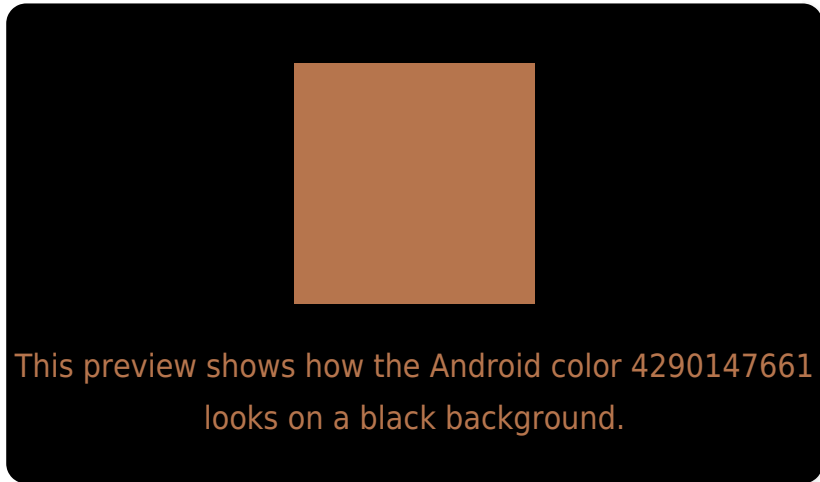
Large Text (above 18pt) WCAG AA ✓ Pass

Any Text WCAG AA ✗ Fail

Large Text (above 18pt) WCAG AAA ✗ Fail

Any Text WCAG AAA ✗ Fail

Black Background



Color Contrast Check

Large Text (above 18pt) WCAG AA ✓ Pass

Any Text WCAG AA ✓ Pass

Large Text (above 18pt) WCAG AAA ✓ Pass

Any Text WCAG AAA × Fail

If you want to check with other color combinations, try the [Color Contrast Checker](#).

Android 4290147661 Background



This preview shows how black text looks on a background with the Android color 4290147661.



This preview shows how white text looks on a background with the Android color 4290147661.

Color Blindness Simulation

Color vision deficiency is a very complex topic, and I could not describe the different causes any better than Wikipedia does, so if you want to learn more, you should check out their [article about color blindness](#).


Dichromacy



Original Color
4290147661

Protanopia
4287726931

Deuteranopia
4288839499



Tritanopia
4290343032

Trichromacy



Original Color
4290147661

Protanomaly
4288577361

Deuteranomaly
4289297228

Tritanomaly
4290277992

Monochromacy



Original Color
4290147661

Achromatopsia
4286874756

Achromatomaly
4288053104

CSS Examples

Text

The CSS property to change the color of the text to Android 4290147661 is called "color". The color property can be set on classes, ids or directly on the HTML element.

This example shows how text in the color `rgb(182, 117, 77)` looks like.

```
.text, #text, p{  
    color:rgb(182, 117, 77)  
}
```

If you want to add a text shadow in that color use the text-shadow property, you can generate a text shadow directly with our [CSS Text Shadow Generator](#).

Here you see how black text with a 4 pixel rgb(182, 117, 77) colored shadow looks like.

```
.shadow{ text-shadow: 4px 4px 2px rgb(182, 117, 77) }
```

Border

The CSS property to change the border of an element to Android 4290147661 is called "border". The border property can be set on classes, ids or directly on the HTML element.

This example shows the color as border, it can be applied via the CSS property "border" or "border-color".

```
.border, #border, table{ border:4px solid rgb(182, 117, 77) }
```

If only the border color should be changed use the property `border-color`.

```
.border{ border-color:rgb(182, 117, 77) }
```

If you want to add a box shadow in that color use:

Here you see how a box with a 4 pixel `rgb(182, 117, 77)` colored shadow looks like.

```
.boxshadow{ -moz-box-shadow:4px 4px 4px  
4px rgb(182, 117, 77); -webkit-box-  
shadow:4px 4px 4px 4px rgb(182, 117, 77);  
box-shadow:4px 4px 4px 4px rgb(182, 117,  
77) }
```

Background

The CSS property to change the background color of an element to Android 4290147661 is called "background". The background property can be set on classes, ids or directly on the HTML element.

```
.background, #background, body{  
background: rgb(182, 117, 77) }
```

If only the background color should be changed can be used:

```
.background{ background-color: rgb(182,  
117, 77) }
```

This example shows the color as background, it is applied via the CSS property "background".

To optimize and compress your CSS code, you can use our [online CSS compressor and optimizer](#) based on csstidy. If you want to create a linear or radial gradient as background or border, check our [CSS Gradient Generator](#).

Hey! You found this booklet interesting? Support Converting Colors with the new Membership Option!

The pro membership hides all ads, plus gives you double the colors in the color bucket, and more awesome pro features!

[Learn more, Memberships starting at \\$2.50/m!](#)

**Follow me
on Twitter!**

@ConvertingColor