

Converting Colors

Android(4290151764)

Have a look what the booklet for
Android(4290151764) contains.

Android(4290151764)	3
<i>Conversions</i>	4
<i>Details</i>	6
<i>Harmonies</i>	11
<i>Previews</i>	23
<i>Color Blindness Simulation</i>	26
<i>CSS Examples</i>	29

Color

Android(4290151764)

Conversions

Conversions Part 1

Format	Color
Hex	B68554
RGB	182, 133, 84
RGB Percent	71%, 52%, 33%
CMY	0.2863, 0.4784, 0.6706
CMYK	0.00, 0.27, 0.54, 0.29
HSL	30°, 40%, 52%
HSV	30°, 54%, 71%
XYZ	29.2792, 27.3602, 12.1254
YIQ	142.0650, 44.9330, -4.8510

Conversions

Conversions Part 2

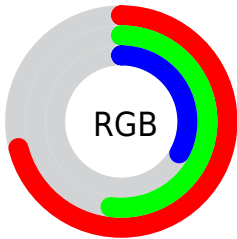
Format	Color
R_{YB}	182, 182, 84
Decimal	11961684
CIE _{Lab}	59.31, 13.09, 33.62
CIE _{LCh}	59, 36.074, 68.728
Yxy	27.3602, 0.4258, 0.3979
Android (android.graphics.Color)	4290151764 (0xFFB68554)
YUV	142.0650, -28.6260, 35.0230
Hunter-Lab	52.3070, 8.3792, 22.8708

Details

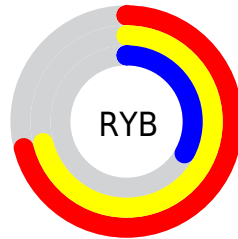
The Android color `4290151764` is a dark color, and the websafe version is hex `CC9966`. A complement of this color would be `4283729334`, and the grayscale version is `4287532686`.

A 20% lighter version of the original color is `4293966471`, and `4286468901` is the 20% darker color. If you saturate the color by 10%, you get `4290149442`, and if you desaturate by 10%, it is `4290154086`.

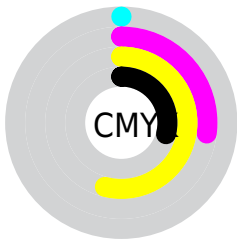
Distribution



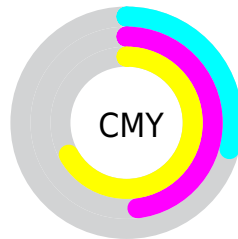
- Red (71%)
- Green (52%)
- Blue (33%)



- Red (71%)
- Yellow (71%)
- Blue (33%)



- Cyan (0%)
- Magenta (27%)
- Yellow (54%)
- Black (29%)



- Cyan (29%)
- Magenta (48%)
- Yellow (67%)

Brightness & Saturation Gradients

These gradients show how the Android color 4290151764 changes by changing the brightness by 10 percent. The first figure shows a shift by +10% for each color and the second figure -10%.

Similar to the brightness gradients but the following saturation gradients show a change of the Android color 4290151764 by changing the saturation by 10% instead.

 4290151764

 4290151764

4294967295

 4288310332

 4293966471

 4286468901


 4294956705

 4284693518

 4294963900

 4283049472

 4294967256

 4281274880

 4294967285

 4279631872

 4278190080

 4290151764

 4290151764

 4290149442

 4290154086

 4290147120

 4290156408

 4290144797

 4290158731

 4290142475

 4290161053

 4290140928

 4290163631

 4290165953

 4290168275

 4290170598

 4290172920

Harmonies

Analogous

The Analogous color harmony consists of three colors that are next to each other on the color wheel.



4291328873



4290151764



4288319567

Triad

The Triadic color harmony groups three colors that are evenly spaced from another and form a triangle on the color wheel.



4290151764



4279345303



4288578496

Complementary

The Complementary color scheme is a pair of colors which are on the opposite of each other on the color wheel.



4290151764



4283729334

Split Complementary

Split-complementary colors differ from the complementary color scheme. The scheme consists of three colors, the original color and two neighbors of the complement color.



4285501389



4290151764



4278230709

Square

The Square scheme is like the rectangle color scheme, but the four colors are evenly spaced on the color wheel.



4290151764



4283407991



4281309385



4290673062

Rectangle

The Rectangle color scheme consists of four colors that form a rectangle on the color wheel.



4290151764



4286879318



4281309385



4287662022

Sweetspot

The Sweet Spot groups the original color and five complimentary colors.



4290151764



4293778119



4290139269



4286082145



4294440951



4286085240

Same Dimension

The Same Dimension uses a secret algorithm to generate beautiful new colors.



4290151764



4293763155



4290164308



4284241747



4288433664



4280028672

Inverse Universe

The Inverse Universe completely reimagines the original color for something new.



4283729334



4283670765



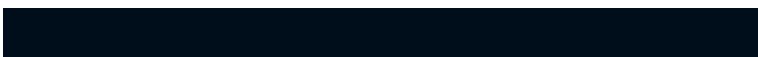
4283716790



4283651932



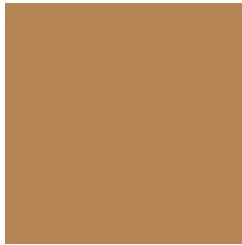
4278210204



4278193692

Previews

White Background



This preview shows how the Android color 4290151764 looks on a white background.

Color Contrast Check

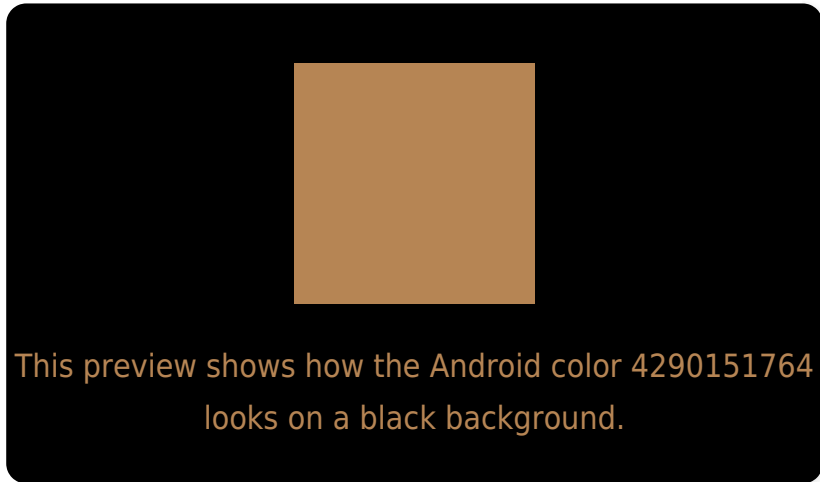
Large Text (above 18pt) WCAG AA ✓ Pass

Any Text WCAG AA ✗ Fail

Large Text (above 18pt) WCAG AAA ✗ Fail

Any Text WCAG AAA ✗ Fail

Black Background



Color Contrast Check

Large Text (above 18pt) WCAG AA ✓ Pass

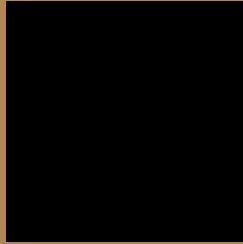
Any Text WCAG AA ✓ Pass

Large Text (above 18pt) WCAG AAA ✓ Pass

Any Text WCAG AAA × Fail

If you want to check with other color combinations, try the [Color Contrast Checker](#).

Android 4290151764 Background



This preview shows how black text looks on a background with the Android color 4290151764.



This preview shows how white text looks on a background with the Android color 4290151764.

Color Blindness Simulation

Color vision deficiency is a very complex topic, and I could not describe the different causes any better than Wikipedia does, so if you want to learn more, you should check out their [article about color blindness](#).

Dichromacy

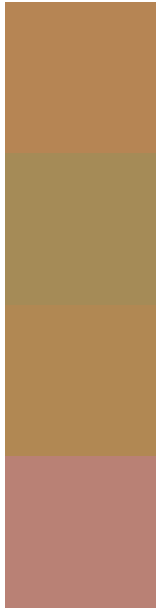


Original Color
4290151764

Protanopia
4288450392

Deuteranopia
4289628499

Trichromacy



Original Color
4290151764

Protanomaly
4289039191

Deuteranomaly
4289824851

Tritanomaly
4290347381

Monochromacy



Original Color
4290151764

Achromatopsia
4287532686

Achromatomaly
4288514937

CSS Examples

Text

The CSS property to change the color of the text to Android 4290151764 is called "color". The color property can be set on classes, ids or directly on the HTML element.

This example shows how text in the color `rgb(182, 133, 84)` looks like.

```
.text, #text, p{  
    color:rgb(182, 133, 84)  
}
```

If you want to add a text shadow in that color use the text-shadow property, you can generate a text shadow directly with our [CSS Text Shadow Generator](#).

Here you see how black text with a 4 pixel rgb(182, 133, 84) colored shadow looks like.

```
.shadow{ text-shadow: 4px 4px 2px rgb(182, 133, 84) }
```

Border

The CSS property to change the border of an element to Android 4290151764 is called "border". The border property can be set on classes, ids or directly on the HTML element.

This example shows the color as border, it can be applied via the CSS property "border" or "border-color".

```
.border, #border, table{ border:4px solid rgb(182, 133, 84) }
```

If only the border color should be changed use the property `border-color`.

```
.border{ border-color:rgb(182, 133, 84) }
```

If you want to add a box shadow in that color use:

Here you see how a box with a 4 pixel `rgb(182, 133, 84)` colored shadow looks like.

```
.boxshadow{ -moz-box-shadow:4px 4px 4px  
4px rgb(182, 133, 84); -webkit-box-  
shadow:4px 4px 4px 4px rgb(182, 133, 84);  
box-shadow:4px 4px 4px 4px rgb(182, 133,  
84) }
```

Background

The CSS property to change the background color of an element to Android 4290151764 is called "background". The background property can be set on classes, ids or directly on the HTML element.

```
.background, #background, body{  
background: rgb(182, 133, 84) }
```

If only the background color should be changed can be used:

```
.background{ background-color: rgb(182,  
133, 84) }
```

This example shows the color as background, it is applied via the CSS property "background".

To optimize and compress your CSS code, you can use our [online CSS compressor and optimizer](#) based on csstidy. If you want to create a linear or radial gradient as background or border, check our [CSS Gradient Generator](#).

Hey! You found this booklet interesting? Support Converting Colors with the new Membership Option!

The pro membership hides all ads, plus gives you double the colors in the color bucket, and more awesome pro features!

[Learn more, Memberships starting at \\$2.50/m!](#)

**Follow me
on Twitter!**

@ConvertingColor