

# Converting Colors

Android(4290151813)

Have a look what the booklet for  
Android(4290151813) contains.

|  |    |
|--|----|
| <b>Android(4290151813)</b> .....               | 3  |
| <b><i>Conversions</i></b> .....                | 4  |
| <b><i>Details</i></b> .....                    | 6  |
| <b><i>Harmonies</i></b> .....                  | 11 |
| <b><i>Previews</i></b> .....                   | 23 |
| <b><i>Color Blindness Simulation</i></b> ..... | 26 |
| <b><i>CSS Examples</i></b> .....               | 29 |

# **Color**

**Android(4290151813)**

# Conversions

## Conversions Part 1

| <b>Format</b> | <b>Color</b>               |
|---------------|----------------------------|
| Hex           | B68585                     |
| RGB           | 182, 133, 133              |
| RGB Percent   | 71%, 52%, 52%              |
| CMY           | 0.2863, 0.4784, 0.4784     |
| CMYK          | 0.00, 0.27, 0.27, 0.29     |
| HSL           | 0°, 25%, 62%               |
| HSV           | 0°, 27%, 71%               |
| XYZ           | 31.9126, 28.4136, 25.9927  |
| YIQ           | 147.6510, 29.2040, 10.3880 |

# Conversions

## Conversions Part 2

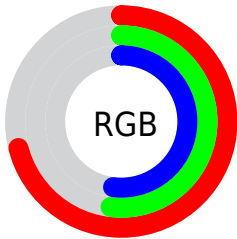
| Format                              | Color                                       |
|-------------------------------------|---|
| <a href="#">RYB</a>                 | <a href="#">182, 133, 133</a>               |
| Decimal                             | <a href="#">11961733</a>                    |
| CIELab                              | <a href="#">60.26, 18.81, 7.42</a>          |
| CIELCh                              | <a href="#">60, 20.218, 21.517</a>          |
| Yxy                                 | <a href="#">28.4136, 0.3697, 0.3292</a>     |
| Android<br>(android.graphics.Color) | <a href="#">4290151813<br/>(0xFFB68585)</a> |
| YUV                                 | <a href="#">147.6510, -7.2229, 30.1241</a>  |
| Hunter-Lab                          | <a href="#">53.3044, 13.5826, 8.4016</a>    |

# Details

The Android color **4290151813** is a light color, and the websafe version is hex **CC9999**. A complement of this color would be **4286953142**, and the grayscale version is **4287927444**.

A 20% lighter version of the original color is **4293900986**, and **4286600020** is the 20% darker color. If you saturate the color by 10%, you get **4290147187**, and if you desaturate by 10%, it is **4290156439**.

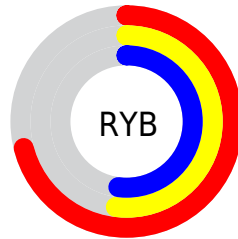
# Distribution



Red (71%)

Green (52%)

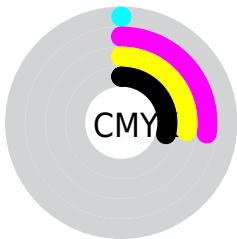
Blue (52%)



Red (71%)

Yellow (52%)

Blue (52%)

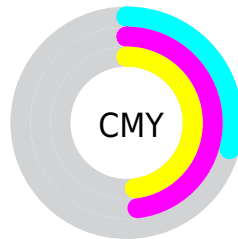


Cyan (0%)

Magenta (27%)

Yellow (27%)

Black (29%)



Cyan (29%)

Magenta (48%)

Yellow (48%)

# Brightness & Saturation Gradients

These gradients show how the Android color 4290151813 changes by changing the brightness by 10 percent. The first figure shows a shift by +10% for each color and the second figure -10%.

Similar to the brightness gradients but the following saturation gradients show a change of the Android color 4290151813 by changing the saturation by 10% instead.





4290151813



4290151813

4294967295



4288375916



4293900986



4286600020



4294956758



4284890173



4294964210



4283245863



4281667602



4280352769



4278190080



4290151813



4290151813



4290147187



4290156439

 4290142561

 4290161065

 4290137678

 4290165948

 4290133052

 4290170574

 4290128426

 4290175200

 4290123800

 4290179826

 4290119174

 4290183167

 4290117632

# Harmonies

## Analogous

The Analogous color harmony consists of three colors that are next to each other on the color wheel.



4289889687



4290151813



4289825142

# Triad

The Triadic color harmony groups three colors that are evenly spaced from another and form a triangle on the color wheel.



4290151813



4286421371



4285895860

# Complementary

The Complementary color scheme is a pair of colors which are on the opposite of each other on the color wheel.



4290151813



4286953142

# Split Complementary

Split-complementary colors differ from the complementary color scheme. The scheme consists of three colors, the original color and two neighbors of the complement color.



4284717485



4290151813



4285176715

# Square

The Square scheme is like the rectangle color scheme, but the four colors are evenly spaced on the color wheel.



4290151813



4287730800



4284455838



4287532722

# Rectangle

The Rectangle color scheme consists of four colors that form a rectangle on the color wheel.



4290151813



4289301616



4284455838



4285437619



# Sweetspot

The Sweet Spot groups the original color and five complimentary colors.



4290151813



4293778138



4290151862



4286082156



4294440951



4286085240



# Same Dimension

The Same Dimension uses a secret algorithm to generate beautiful new colors.



4290151813



4293763489



4290158213



4284240723



4288413696



4280025088



# Inverse Universe

The Inverse Universe completely reimagines the original color for something new.



4286953142



4288802285



4286946998



4283653212



4278230172

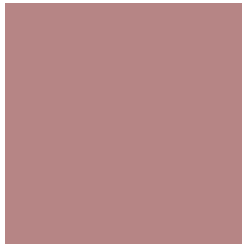


4278197276



# Previews

## White Background



This preview shows how the Android color 4290151813 looks on a white background.

## Color Contrast Check

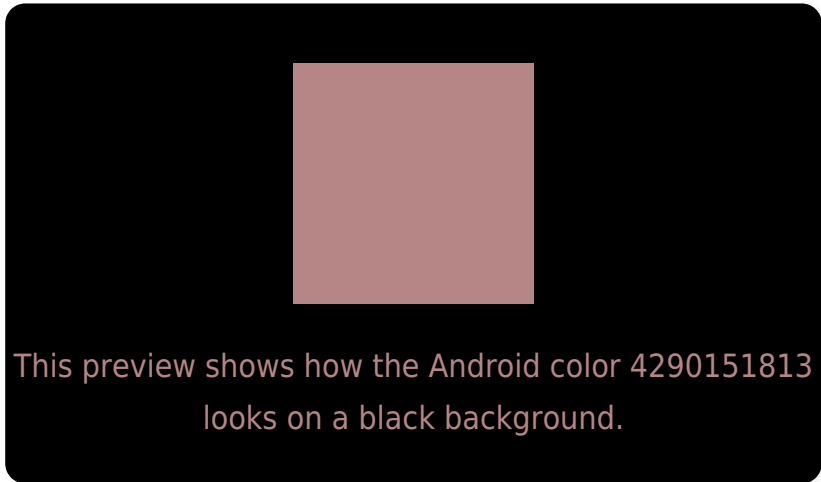
Large Text (above 18pt) WCAG AA ✓ Pass

Any Text WCAG AA ✗ Fail

Large Text (above 18pt) WCAG AAA ✗ Fail

Any Text WCAG AAA ✗ Fail

# Black Background



## Color Contrast Check

Large Text (above 18pt) WCAG AA ✓ Pass

Any Text WCAG AA ✓ Pass

Large Text (above 18pt) WCAG AAA ✓ Pass

Any Text WCAG AAA × Fail

If you want to check with other color combinations, try the [Color Contrast Checker](#).



# Android 4290151813 Background



This preview shows how black text looks on a background with the Android color 4290151813.



This preview shows how white text looks on a background with the Android color 4290151813.

# Color Blindness Simulation

Color vision deficiency is a very complex topic, and I could not describe the different causes any better than Wikipedia does, so if you want to learn more, you should check out their [article about color blindness](#).

## Dichromacy



**Original Color**  
4290151813

**Protanopia**  
4288057739

**Deuteranopia**  
4289039492



**Tritanopia**  
4290217102

# Trichromacy



**Original Color**  
4290151813

**Protanomaly**  
4288843145

**Deuteranomaly**  
4289431940

**Tritanomaly**  
4290217099

# Monochromacy



**Original Color**  
4290151813

**Achromatopsia**  
4287927444

**Achromatomaly**  
4288712591

# CSS Examples

## Text

The CSS property to change the color of the text to Android 4290151813 is called "color". The color property can be set on classes, ids or directly on the HTML element.

This example shows how text in the color `rgb(182, 133, 133)` looks like.

```
.text, #text, p{  
    color:rgb(182, 133, 133)  
}
```

If you want to add a text shadow in that color use the text-shadow property, you can generate a text shadow directly with our [CSS Text Shadow Generator](#).

Here you see how black text with a 4 pixel rgb(182, 133, 133) colored shadow looks like.

```
.shadow{ text-shadow: 4px 4px 2px rgb(182, 133, 133) }
```

## Border

The CSS property to change the border of an element to Android 4290151813 is called "border". The border property can be set on classes, ids or directly on the HTML element.

This example shows the color as border, it can be applied via the CSS property "border" or "border-color".

```
.border, #border, table{ border:4px solid rgb(182, 133, 133) }
```

If only the border color should be changed use the property `border-color`.

```
.border{ border-color:rgb(182, 133, 133) }
```

If you want to add a box shadow in that color use:

Here you see how a box with a 4 pixel `rgb(182, 133, 133)` colored shadow looks like.

```
.boxshadow{ -moz-box-shadow:4px 4px 4px  
4px rgb(182, 133, 133); -webkit-box-  
shadow:4px 4px 4px 4px rgb(182, 133, 133);  
box-shadow:4px 4px 4px 4px rgb(182, 133,  
133) }
```

# Background

The CSS property to change the background color of an element to Android 4290151813 is called "background". The background property can be set on classes, ids or directly on the HTML element.

```
.background, #background, body{  
background: rgb(182, 133, 133) }
```

If only the background color should be changed can be used:

```
.background{ background-color: rgb(182,  
133, 133) }
```

This example shows the color as background, it is applied via the CSS property "background".

To optimize and compress your CSS code, you can use our [online CSS compressor and optimizer](#) based on csstidy. If you want to create a linear or radial gradient as background or border, check our [CSS Gradient Generator](#).



Hey! You found this booklet interesting? Support Converting Colors with the new Membership Option!

The pro membership hides all ads, plus gives you double the colors in the color bucket, and more awesome pro features!

**[Learn more, Memberships starting at \\$2.50/m!](#)**

**Follow me  
on Twitter!**

@ConvertingColor