

Converting Colors

Android(4290153323)

Have a look what the booklet for
Android(4290153323) contains.

Android(4290153323)	3
<i>Conversions</i>	4
<i>Details</i>	6
<i>Harmonies</i>	11
<i>Previews</i>	23
<i>Color Blindness Simulation</i>	26
<i>CSS Examples</i>	29

Color

Android(4290153323)

Conversions

Conversions Part 1

Format	Color
Hex	B68B6B
RGB	182, 139, 107
RGB Percent	71%, 55%, 42%
CMY	0.2863, 0.4549, 0.5804
CMYK	0.00, 0.24, 0.41, 0.29
HSL	26°, 34%, 57%
HSV	26°, 41%, 71%
XYZ	31.1779, 29.4719, 17.9553
YIQ	148.2090, 35.9000, -0.8360

Conversions

Conversions Part 2

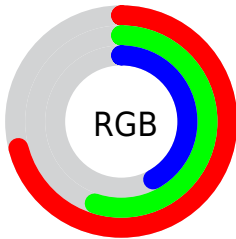
Format	Color
R_{YB}	182, 163, 107
Decimal	11963243
CIE Lab	61.20, 12.09, 23.42
CIE LCh	61, 26.358, 62.697
Yxy	29.4719, 0.3966, 0.3749
Android (android.graphics.Color)	4290153323 (0xFFB68B6B)
YUV	148.2090, -20.3160, 29.6347
Hunter-Lab	54.2880, 7.5095, 18.3919

Details

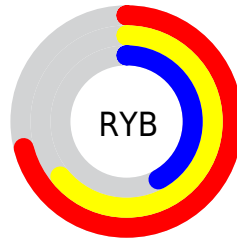
The Android color `4290153323` is a dark color, and the websafe version is hex `CC9966`. A complement of this color would be `4285241014`, and the grayscale version is `4287927444`.

A 20% lighter version of the original color is `4293902751`, and `4286535995` is the 20% darker color. If you saturate the color by 10%, you get `4290150745`, and if you desaturate by 10%, it is `4290155901`.

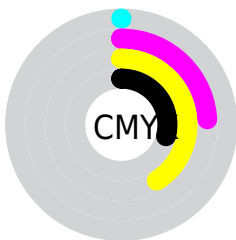
Distribution



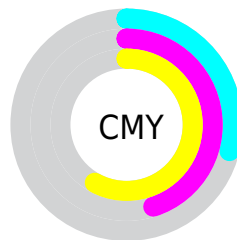
- Red (71%)
- Green (55%)
- Blue (42%)



- Red (71%)
- Yellow (64%)
- Blue (42%)



- Cyan (0%)
- Magenta (24%)
- Yellow (41%)
- Black (29%)



- Cyan (29%)
- Magenta (45%)
- Yellow (58%)

Brightness & Saturation Gradients

These gradients show how the Android color 4290153323 changes by changing the brightness by 10 percent. The first figure shows a shift by +10% for each color and the second figure -10%.

Similar to the brightness gradients but the following saturation gradients show a change of the Android color 4290153323 by changing the saturation by 10% instead.



4290153323



4290153323

4294967295



4288311891



4293902751



4286535995



4294958266



4284826149



4294965717



4283116304



4294967282



4281538048



4280025088



4278190080



4290153323



4290153323



4290150745



4290155901

 4290147911

 4290158735

 4290145332

 4290161314

 4290142498

 4290164148

 4290139920

 4290166726

 4290137600

 4290169560

 4290172138

 4290174717

 4290177535

Harmonies

Analogous

The Analogous color harmony consists of three colors that are next to each other on the color wheel.



4290872700



4290153323



4288844645

Triad

The Triadic color harmony groups three colors that are evenly spaced from another and form a triangle on the color wheel.



4290153323



4283802005



4288318907

Complementary

The Complementary color scheme is a pair of colors which are on the opposite of each other on the color wheel.



4290153323



4285241014

Split Complementary

Split-complementary colors differ from the complementary color scheme. The scheme consists of three colors, the original color and two neighbors of the complement color.



4286158274



4290153323



4283080876

Square

The Square scheme is like the rectangle color scheme, but the four colors are evenly spaced on the color wheel.



4290153323



4285439870



4284062908



4289955497

Rectangle

The Rectangle color scheme consists of four colors that form a rectangle on the color wheel.



4290153323



4287797352



4284062908



4287598783

Sweetspot

The Sweet Spot groups the original color and five complimentary colors.



4290153323



4293778897



4290145175



4286082663



4294440951



4286085240

Same Dimension

The Same Dimension uses a secret algorithm to generate beautiful new colors.



4290153323



4293766009



4290162795



4284241747



4288430592



4280028160

Inverse Universe

The Inverse Universe completely reimagines the original color for something new.



4285241014



4286168301



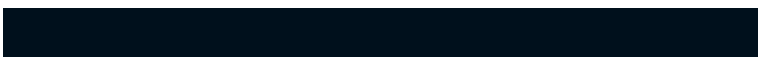
4285231542



4283652188



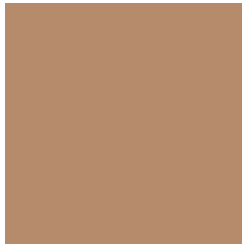
4278213020



4278194204

Previews

White Background



This preview shows how the Android color 4290153323 looks on a white background.

Color Contrast Check

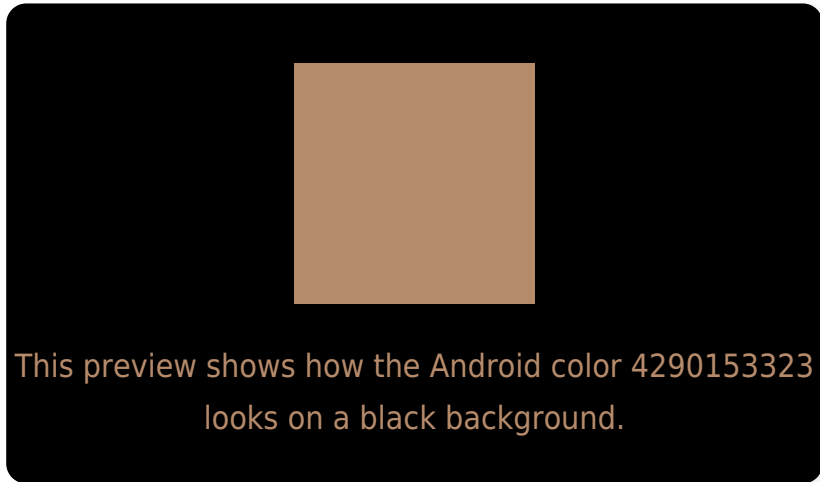
Large Text (above 18pt) WCAG AA ✓ Pass

Any Text WCAG AA ✗ Fail

Large Text (above 18pt) WCAG AAA ✗ Fail

Any Text WCAG AAA ✗ Fail

Black Background



Color Contrast Check

Large Text (above 18pt) WCAG AA ✓ Pass

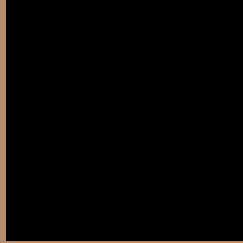
Any Text WCAG AA ✓ Pass

Large Text (above 18pt) WCAG AAA ✓ Pass

Any Text WCAG AAA × Fail

If you want to check with other color combinations, try the [Color Contrast Checker](#).

Android 4290153323 Background



This preview shows how black text looks on a background with the Android color 4290153323.



This preview shows how white text looks on a background with the Android color 4290153323.

Color Blindness Simulation

Color vision deficiency is a very complex topic, and I could not describe the different causes any better than Wikipedia does, so if you want to learn more, you should check out their [article about color blindness](#).

Dichromacy



Original Color

4290153323

Protanopia

4288648303

Deuteranopia

4289760874



Tritanopia
4290414224

Trichromacy



Original Color
4290153323

Protanomaly
4289171822

Deuteranomaly
4289891690

Tritanomaly
4290349187

Monochromacy



Original Color
4290153323

Achromatopsia
4287927444

Achromatomaly
4288713093

CSS Examples

Text

The CSS property to change the color of the text to Android 4290153323 is called "color". The color property can be set on classes, ids or directly on the HTML element.

This example shows how text in the color `rgb(182, 139, 107)` looks like.

```
.text, #text, p{  
    color:rgb(182, 139, 107)  
}
```

If you want to add a text shadow in that color use the text-shadow property, you can generate a text shadow directly with our [CSS Text Shadow Generator](#).

Here you see how black text with a 4 pixel rgb(182, 139, 107) colored shadow looks like.

```
.shadow{ text-shadow: 4px 4px 2px rgb(182, 139, 107) }
```

Border

The CSS property to change the border of an element to Android 4290153323 is called "border". The border property can be set on classes, ids or directly on the HTML element.

This example shows the color as border, it can be applied via the CSS property "border" or "border-color".

```
.border, #border, table{ border:4px solid rgb(182, 139, 107) }
```

If only the border color should be changed use the property `border-color`.

```
.border{ border-color:rgb(182, 139, 107) }
```

If you want to add a box shadow in that color use:

Here you see how a box with a 4 pixel `rgb(182, 139, 107)` colored shadow looks like.

```
.boxshadow{ -moz-box-shadow:4px 4px 4px  
4px rgb(182, 139, 107); -webkit-box-  
shadow:4px 4px 4px 4px rgb(182, 139, 107);  
box-shadow:4px 4px 4px 4px rgb(182, 139,  
107) }
```

Background

The CSS property to change the background color of an element to Android 4290153323 is called "background". The background property can be set on classes, ids or directly on the HTML element.

```
.background, #background, body{  
background: rgb(182, 139, 107) }
```

If only the background color should be changed can be used:

```
.background{ background-color: rgb(182,  
139, 107) }
```

This example shows the color as background, it is applied via the CSS property "background".

To optimize and compress your CSS code, you can use our [online CSS compressor and optimizer](#) based on csstidy. If you want to create a linear or radial gradient as background or border, check our [CSS Gradient Generator](#).

Hey! You found this booklet interesting? Support Converting Colors with the new Membership Option!

The pro membership hides all ads, plus gives you double the colors in the color bucket, and more awesome pro features!

[Learn more, Memberships starting at \\$2.50/m!](#)

**Follow me
on Twitter!**

@ConvertingColor