

# Converting Colors

Android(4290155679)

Have a look what the booklet for  
Android(4290155679) contains.

<b>Android(4290155679)</b> .....	3
<b><i>Conversions</i></b> .....	4
<b><i>Details</i></b> .....	6
<b><i>Harmonies</i></b> .....	11
<b><i>Previews</i></b> .....	23
<b><i>Color Blindness Simulation</i></b> .....	26
<b><i>CSS Examples</i></b> .....	29

# **Color**

**Android(4290155679)**

# Conversions

## Conversions Part 1

Format	Color
Hex	B6949F
RGB	182, 148, 159
RGB Percent	71%, 58%, 62%
CMY	0.2863, 0.4196, 0.3765
CMYK	0.00, 0.19, 0.13, 0.29
HSL	341°, 19%, 65%
HSV	341°, 19%, 71%
XYZ	36.1393, 33.6281, 37.3870
YIQ	159.4200, 16.7330, 10.6290

# Conversions

## Conversions Part 2

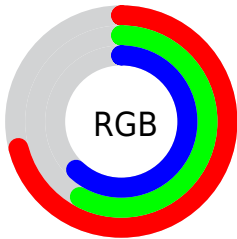
<b>Format</b>	<b>Color</b>
<b>RYB</b>	182, 148, 159
Decimal	11965599
CIELab	64.67, 14.53, -0.97
CIELCh	65, 14.562, 356.179
Yxy	33.6281, 0.3373, 0.3138
Android (android.graphics.Color)	4290155679 (0xFFB6949F)
YUV	159.4200, -0.2071, 19.8027
Hunter-Lab	57.9897, 9.7595, 2.3675

# Details

The Android color `4290155679` is a light color, and the websafe version is hex `CC9999`. A complement of this color would be `4287936171`, and the grayscale version is `4288651167`.

A 20% lighter version of the original color is `4293839574`, and `4286669164` is the 20% darker color. If you saturate the color by 10%, you get `4290151059`, and if you desaturate by 10%, it is `4290160299`.

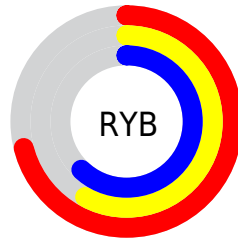
# Distribution



Red (71%)

Green (58%)

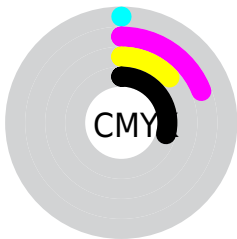
Blue (62%)



Red (71%)

Yellow (58%)

Blue (62%)

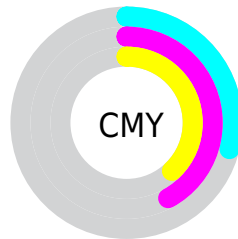


Cyan (0%)

Magenta (19%)

Yellow (13%)

Black (29%)



Cyan (29%)

Magenta (42%)

Yellow (38%)

# Brightness & Saturation Gradients

These gradients show how the Android color 4290155679 changes by changing the brightness by 10 percent. The first figure shows a shift by +10% for each color and the second figure -10%.

Similar to the brightness gradients but the following saturation gradients show a change of the Android color 4290155679 by changing the saturation by 10% instead.



 4290155679

 4290155679

4294967295

 4288379525

 4293839574

 4286669164

 4294960882

 4284959059

 4283380284

 4281802023

 4280419858

 4278190080

 4290155679

 4290155679

 4290151059

 4290160299

4290146438

4290164920

4290141562

4290169796

4290136942

4290174416

4290132321

4290179037

4290127701

4290183145

4290123081

4290183157

4290118205

4290183167

4290117691

# Harmonies

## Analogous

The Analogous color harmony consists of three colors that are next to each other on the color wheel.



4289500843



4290155679



4290286738

# Triad

The Triadic color harmony groups three colors that are evenly spaced from another and form a triangle on the color wheel.



4290155679



4288389253



4286554802

# Complementary

The Complementary color scheme is a pair of colors which are on the opposite of each other on the color wheel.



4290155679



4287936171

# Split Complementary

Split-complementary colors differ from the complementary color scheme. The scheme consists of three colors, the original color and two neighbors of the complement color.



4286293160



4290155679



4287406990

# Square

The Square scheme is like the rectangle color scheme, but the four colors are evenly spaced on the color wheel.



4290155679



4289305475



4286620827



4287405750

# Rectangle

The Rectangle color scheme consists of four colors that form a rectangle on the color wheel.



4290155679



4290156171



4286620827



4286423983



# Sweetspot

The Sweet Spot groups the original color and five complimentary colors.



4290155679



4293779428



4289434806



4286082930



4294440951



4286085240



# Same Dimension

The Same Dimension uses a secret algorithm to generate beautiful new colors.



4290155679



4293769674



4290157204



4284240726



4288413746



4280025097



# Inverse Universe

The Inverse Universe completely reimagines the original color for something new.



4290155679



4293769674



4287934646



4284240726



4288413746

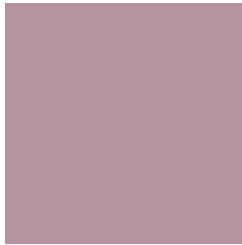


4280025097



# Previews

## White Background



This preview shows how the Android color 4290155679 looks on a white background.

## Color Contrast Check

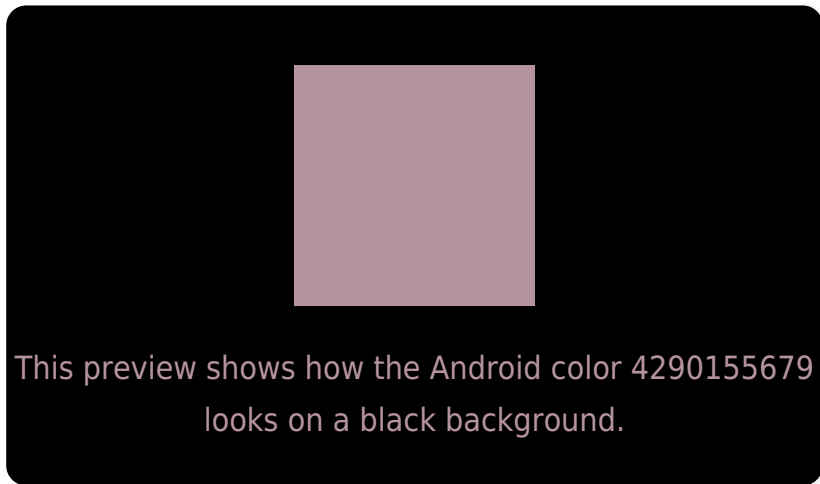
Large Text (above 18pt) WCAG AA × Fail

Any Text WCAG AA × Fail

Large Text (above 18pt) WCAG AAA × Fail

Any Text WCAG AAA × Fail

# Black Background



## Color Contrast Check

Large Text (above 18pt) WCAG AA ✓ Pass

Any Text WCAG AA ✓ Pass

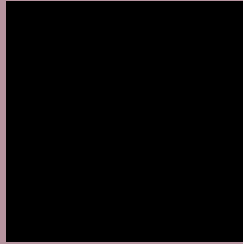
Large Text (above 18pt) WCAG AAA ✓ Pass

Any Text WCAG AAA ✓ Pass

If you want to check with other color combinations, try the [Color Contrast Checker](#).



# Android 4290155679 Background



This preview shows how black text looks on a background with the Android color 4290155679.



This preview shows how white text looks on a background with the Android color 4290155679.

# Color Blindness Simulation

Color vision deficiency is a very complex topic, and I could not describe the different causes any better than Wikipedia does, so if you want to learn more, you should check out their [article about color blindness](#).

## Dichromacy



**Original Color**  
4290155679

**Protanopia**  
4288584868

**Deuteranopia**  
4289501342



**Tritanopia**  
4290155679

# Trichromacy



**Original Color**  
4290155679

**Protanomaly**  
4289173922

**Deuteranomaly**  
4289763230

**Tritanomaly**  
4290155679

# Monochromacy



**Original Color**  
4290155679

**Achromatopsia**  
4288651167

**Achromatomaly**  
4289174431

# CSS Examples

## Text

The CSS property to change the color of the text to Android 4290155679 is called "color". The color property can be set on classes, ids or directly on the HTML element.

This example shows how text in the color `rgb(182, 148, 159)` looks like.

```
.text, #text, p{  
    color:rgb(182, 148, 159)  
}
```

If you want to add a text shadow in that color use the text-shadow property, you can generate a text shadow directly with our [CSS Text Shadow Generator](#).

Here you see how black text with a 4 pixel rgb(182, 148, 159) colored shadow looks like.

```
.shadow{ text-shadow: 4px 4px 2px rgb(182, 148, 159) }
```

## Border

The CSS property to change the border of an element to Android 4290155679 is called "border". The border property can be set on classes, ids or directly on the HTML element.

This example shows the color as border, it can be applied via the CSS property "border" or "border-color".

```
.border, #border, table{ border:4px solid rgb(182, 148, 159) }
```

If only the border color should be changed use the property `border-color`.

```
.border{ border-color:rgb(182, 148, 159) }
```

If you want to add a box shadow in that color use:

Here you see how a box with a 4 pixel `rgb(182, 148, 159)` colored shadow looks like.

```
.boxshadow{ -moz-box-shadow:4px 4px 4px  
4px rgb(182, 148, 159); -webkit-box-  
shadow:4px 4px 4px 4px rgb(182, 148, 159);  
box-shadow:4px 4px 4px 4px rgb(182, 148,  
159) }
```

# Background

The CSS property to change the background color of an element to Android 4290155679 is called "background". The background property can be set on classes, ids or directly on the HTML element.

```
.background, #background, body{  
background: rgb(182, 148, 159) }
```

If only the background color should be changed can be used:

```
.background{ background-color: rgb(182,  
148, 159) }
```

This example shows the color as background, it is applied via the CSS property "background".

To optimize and compress your CSS code, you can use our [online CSS compressor and optimizer](#) based on csstidy. If you want to create a linear or radial gradient as background or border, check our [CSS Gradient Generator](#).



Hey! You found this booklet interesting? Support Converting Colors with the new Membership Option!

The pro membership hides all ads, plus gives you double the colors in the color bucket, and more awesome pro features!

**[Learn more, Memberships starting at \\$2.50/m!](#)**

**Follow me  
on Twitter!**

@ConvertingColor