

Converting Colors

Android(4290157179)

Have a look what the booklet for
Android(4290157179) contains.

| | |
|--|----|
| Android(4290157179) | 3 |
| <i>Conversions</i> | 4 |
| <i>Details</i> | 6 |
| <i>Harmonies</i> | 11 |
| <i>Previews</i> | 23 |
| <i>Color Blindness Simulation</i> | 26 |
| <i>CSS Examples</i> | 29 |

Color

Android(4290157179)

Conversions

Conversions Part 1

| Format | Color |
|-------------|----------------------------|
| Hex | B69A7B |
| RGB | 182, 154, 123 |
| RGB Percent | 71%, 60%, 48% |
| CMY | 0.2863, 0.3961, 0.5176 |
| CMYK | 0.00, 0.15, 0.32, 0.29 |
| HSL | 32°, 29%, 60% |
| HSV | 32°, 32%, 71% |
| XYZ | 34.4222, 34.4863, 23.5812 |
| YIQ | 158.8380, 26.6390, -3.7050 |

Conversions

Conversions Part 2

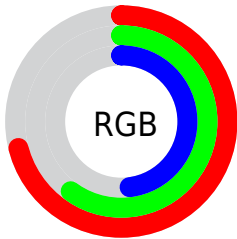
| Format | Color |
|-------------------------------------|--|
| RYB | 176, 182, 123 |
| Decimal | 11967099 |
| CIELab | 65.35, 5.77, 20.15 |
| CIELCh | 65, 20.956, 74.028 |
| Yxy | 34.4863, 0.3722, 0.3729 |
| Android (android.graphics.Color) | 4290157179 (0xFFB69A7B) |
| YUV | 158.8380, -17.6681, 20.3131 |
| Hunter-Lab | 58.7251, 1.8603, 17.2995 |

Details

The Android color **4290157179** is a light color, and the websafe version is hex **CC9966**. A complement of this color would be **4286289846**, and the grayscale version is **4288651167**.

A 20% lighter version of the original color is **4293906608**, and **4286605130** is the 20% darker color. If you saturate the color by 10%, you get **4290154857**, and if you desaturate by 10%, it is **4290159501**.

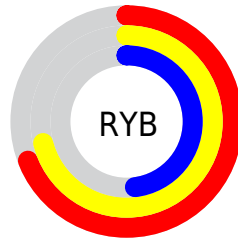
Distribution



Red (71%)

Green (60%)

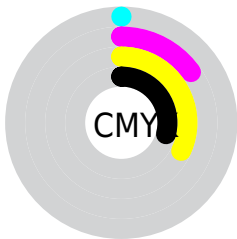
Blue (48%)



Red (69%)

Yellow (71%)

Blue (48%)

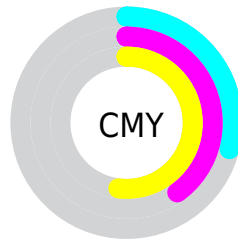


Cyan (0%)

Magenta (15%)

Yellow (32%)

Black (29%)



Cyan (29%)

Magenta (40%)

Yellow (52%)

Brightness & Saturation Gradients

These gradients show how the Android color 4290157179 changes by changing the brightness by 10 percent. The first figure shows a shift by +10% for each color and the second figure -10%.

Similar to the brightness gradients but the following saturation gradients show a change of the Android color 4290157179 by changing the saturation by 10% instead.



4290157179



4290157179

4294967295



4288381026



4293906608



4286605130



4294962635



4284895027



4294967271



4283250718



4281737990



4280225280



4278190080



4290157179



4290157179



4290154857



4290159501

■ 4290152791

■ 4290161567

■ 4290150468

■ 4290163890

■ 4290148146

■ 4290166212

■ 4290146080

■ 4290168278

■ 4290143758

■ 4290170600

■ 4290142208

■ 4290172666

■ 4290174975

■ 4290177279

Harmonies

Analogous

The Analogous color harmony consists of three colors that are next to each other on the color wheel.



4290942085



4290157179



4288979066

Triad

The Triadic color harmony groups three colors that are evenly spaced from another and form a triangle on the color wheel.



4290157179



4285311399



4289566650

Complementary

The Complementary color scheme is a pair of colors which are on the opposite of each other on the color wheel.



4290157179



4286289846

Split Complementary

Split-complementary colors differ from the complementary color scheme. The scheme consists of three colors, the original color and two neighbors of the complement color.



4287929795



4290157179



4285311160

Square

The Square scheme is like the rectangle color scheme, but the four colors are evenly spaced on the color wheel.



4290157179



4286228884



4286358466



4290679465

Rectangle

The Rectangle color scheme consists of four colors that form a rectangle on the color wheel.



4290157179



4288062591



4286358466



4289042878

Sweetspot

The Sweet Spot groups the original color and five complimentary colors.



4290157179



4293780181



4290149272



4286083433



4294440951



4286085240

Same Dimension

The Same Dimension uses a secret algorithm to generate beautiful new colors.



4290157179



4293771665



4290098811



4284241747



4288434688



4280028928

Inverse Universe

The Inverse Universe completely reimagines the original color for something new.



4286289846



4287741421



4286348214



4283651932



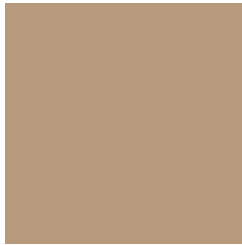
4278209180



4278193436

Previews

White Background



This preview shows how the Android color 4290157179 looks on a white background.

Color Contrast Check

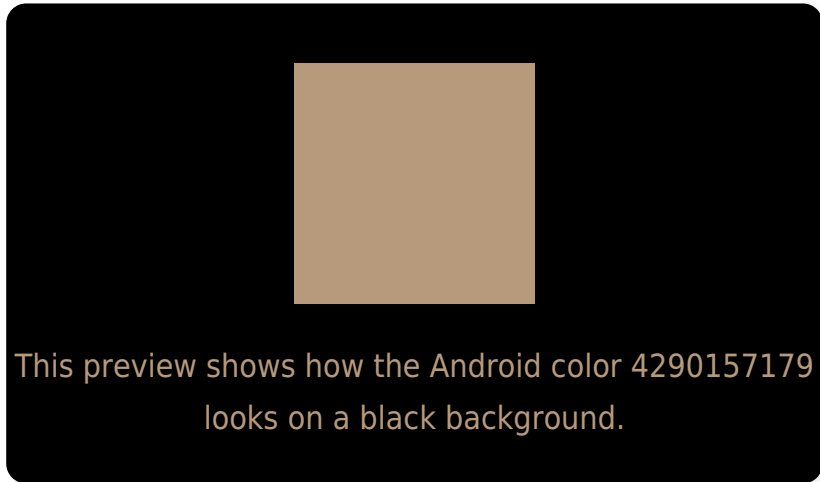
Large Text (above 18pt) WCAG AA × Fail

Any Text WCAG AA × Fail

Large Text (above 18pt) WCAG AAA × Fail

Any Text WCAG AAA × Fail

Black Background



Color Contrast Check

Large Text (above 18pt) WCAG AA ✓ Pass

Any Text WCAG AA ✓ Pass

Large Text (above 18pt) WCAG AAA ✓ Pass

Any Text WCAG AAA ✓ Pass

If you want to check with other color combinations, try the [Color Contrast Checker](#).

Android 4290157179 Background



This preview shows how black text looks on a background with the Android color 4290157179.



This preview shows how white text looks on a background with the Android color 4290157179.

Color Blindness Simulation

Color vision deficiency is a very complex topic, and I could not describe the different causes any better than Wikipedia does, so if you want to learn more, you should check out their [article about color blindness](#).


Dichromacy



Original Color
4290157179

Protanopia
4289306493

Deuteranopia
4290418811



Tritanopia
4290418080

Trichromacy



Original Color
4290157179

Protanomaly
4289633660

Deuteranomaly
4290353531

Tritanomaly
4290353043

Monochromacy



Original Color
4290157179

Achromatopsia
4288651167

Achromatomaly
4289174930

CSS Examples

Text

The CSS property to change the color of the text to Android 4290157179 is called "color". The color property can be set on classes, ids or directly on the HTML element.

This example shows how text in the color `rgb(182, 154, 123)` looks like.

```
.text, #text, p{  
    color:rgb(182, 154, 123)  
}
```

If you want to add a text shadow in that color use the text-shadow property, you can generate a text shadow directly with our [CSS Text Shadow Generator](#).

Here you see how black text with a 4 pixel rgb(182, 154, 123) colored shadow looks like.

```
.shadow{ text-shadow: 4px 4px 2px rgb(182, 154, 123) }
```

Border

The CSS property to change the border of an element to Android 4290157179 is called "border". The border property can be set on classes, ids or directly on the HTML element.

This example shows the color as border, it can be applied via the CSS property "border" or "border-color".

```
.border, #border, table{ border:4px solid rgb(182, 154, 123) }
```

If only the border color should be changed use the property `border-color`.

```
.border{ border-color:rgb(182, 154, 123) }
```

If you want to add a box shadow in that color use:

Here you see how a box with a 4 pixel `rgb(182, 154, 123)` colored shadow looks like.

```
.boxshadow{ -moz-box-shadow:4px 4px 4px  
4px rgb(182, 154, 123); -webkit-box-  
shadow:4px 4px 4px 4px rgb(182, 154, 123);  
box-shadow:4px 4px 4px 4px rgb(182, 154,  
123) }
```

Background

The CSS property to change the background color of an element to Android 4290157179 is called "background". The background property can be set on classes, ids or directly on the HTML element.

```
.background, #background, body{  
background: rgb(182, 154, 123) }
```

If only the background color should be changed can be used:

```
.background{ background-color: rgb(182,  
154, 123) }
```

This example shows the color as background, it is applied via the CSS property "background".

To optimize and compress your CSS code, you can use our [online CSS compressor and optimizer](#) based on csstidy. If you want to create a linear or radial gradient as background or border, check our [CSS Gradient Generator](#).

Hey! You found this booklet interesting? Support Converting Colors with the new Membership Option!

The pro membership hides all ads, plus gives you double the colors in the color bucket, and more awesome pro features!

[Learn more, Memberships starting at \\$2.50/m!](#)

**Follow me
on Twitter!**

@ConvertingColor