

Converting Colors

Android(4290213746)

Have a look what the booklet for
Android(4290213746) contains.

Android(4290213746)	3
<i>Conversions</i>	4
<i>Details</i>	6
<i>Harmonies</i>	11
<i>Previews</i>	23
<i>Color Blindness Simulation</i>	26
<i>CSS Examples</i>	29

Color

Android(4290213746)

Conversions

Conversions Part 1

Format	Color
Hex	B77772
RGB	183, 119, 114
RGB Percent	72%, 47%, 45%
CMY	0.2824, 0.5333, 0.5529
CMYK	0.00, 0.35, 0.38, 0.28
HSL	4°, 32%, 58%
HSV	4°, 38%, 72%
XYZ	29.1625, 24.4758, 19.1069
YIQ	137.5660, 39.7490, 12.0130

Conversions

Conversions Part 2

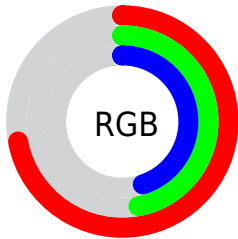
Format	Color
R _Y B	183, 119, 114
Decimal	12023666
CIE Lab	56.56, 24.47, 13.13
CIE LCh	57, 27.773, 28.223
Yxy	24.4758, 0.4009, 0.3365
Android (android.graphics.Color)	4290213746 (0xFFB77772)
YUV	137.5660, -11.6180, 39.8456
Hunter-Lab	49.4731, 18.6413, 11.7329

Details

The Android color `4290213746` is a dark color, and the websafe version is hex `996666`. A complement of this color would be `4285706935`, and the grayscale version is `4287269514`.

A 20% lighter version of the original color is `4294028454`, and `4286596674` is the 20% darker color. If you saturate the color by 10%, you get `4290209376`, and if you desaturate by 10%, it is `4290218116`.

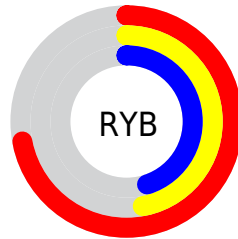
Distribution



Red (72%)

Green (47%)

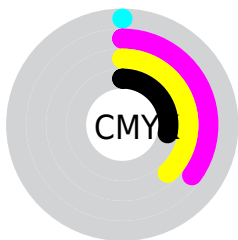
Blue (45%)



Red (72%)

Yellow (47%)

Blue (45%)

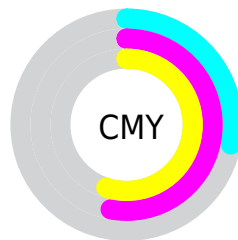


Cyan (0%)

Magenta (35%)

Yellow (38%)

Black (28%)



Cyan (28%)

Magenta (53%)

Yellow (55%)

Brightness & Saturation Gradients

These gradients show how the Android color 4290213746 changes by changing the brightness by 10 percent. The first figure shows a shift by +10% for each color and the second figure -10%.

Similar to the brightness gradients but the following saturation gradients show a change of the Android color 4290213746 by changing the saturation by 10% instead.

 4290213746

 4290213746

4294967295

 4288372314

 4294028454

 4286596674


 4294952897

 4284821036

 4294960349

 4283111447

 4294967289

 4281532672

 4279566336

 4278190080

 4290213746

 4290213746

 4290209376

 4290218116

 4290205005

 4290222487

 4290200635

 4290226857

 4290196265

 4290231227

 4290191895

 4290235598

 4290187524

 4290239968

 4290186496

 4290244338

 4290248703

Harmonies

Analogous

The Analogous color harmony consists of three colors that are next to each other on the color wheel.



4290082186



4290213746



4289559903

Triad

The Triadic color harmony groups three colors that are evenly spaced from another and form a triangle on the color wheel.



4290213746



4284781165



4284844728

Complementary

The Complementary color scheme is a pair of colors which are on the opposite of each other on the color wheel.



4290213746



4285706935

Split Complementary

Split-complementary colors differ from the complementary color scheme. The scheme consists of three colors, the original color and two neighbors of the complement color.



4282487216



4290213746



4282946949

Square

The Square scheme is like the rectangle color scheme, but the four colors are evenly spaced on the color wheel.



4290213746



4286614876



4281635998



4287201970

Rectangle

The Rectangle color scheme consists of four colors that form a rectangle on the color wheel.



4290213746



4288775001



4281635998



4283993526

Sweetspot

The Sweet Spot groups the original color and five complimentary colors.



4290213746



4293776851



4290212530



4286081384



4294440951



4286085240

Same Dimension

The Same Dimension uses a secret algorithm to generate beautiful new colors.



4290213746



4293757570



4290222450



4284240723



4288416512



4280025600

Inverse Universe

The Inverse Universe completely reimagines the original color for something new.



4285706935



4286768621



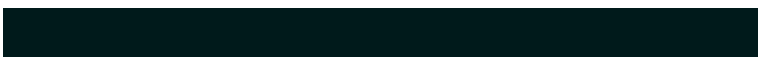
4285698231



4283652956



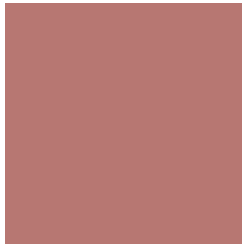
4278227100



4278196764

Previews

White Background



This preview shows how the Android color 4290213746 looks on a white background.

Color Contrast Check

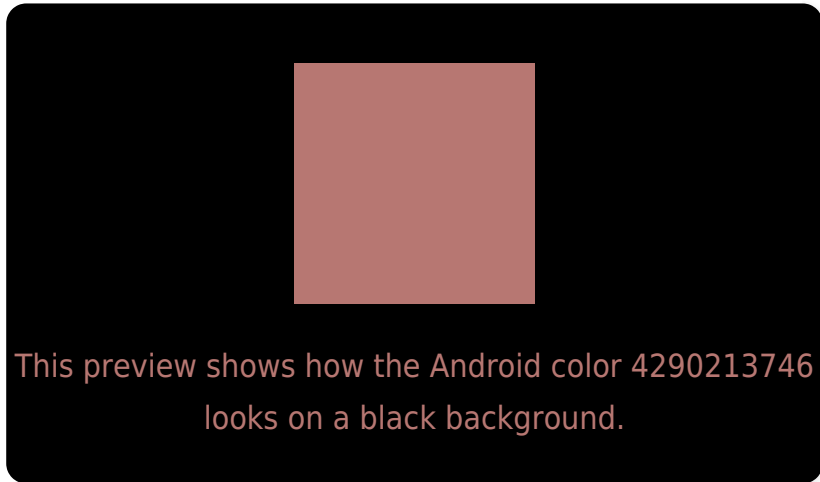
Large Text (above 18pt) WCAG AA ✓ Pass

Any Text WCAG AA ✗ Fail

Large Text (above 18pt) WCAG AAA ✗ Fail

Any Text WCAG AAA ✗ Fail

Black Background



Color Contrast Check

Large Text (above 18pt) WCAG AA ✓ Pass

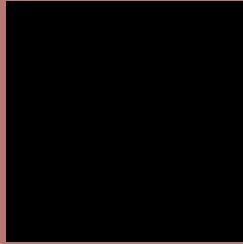
Any Text WCAG AA ✓ Pass

Large Text (above 18pt) WCAG AAA ✓ Pass

Any Text WCAG AAA × Fail

If you want to check with other color combinations, try the [Color Contrast Checker](#).

Android 4290213746 Background



This preview shows how black text looks on a background with the Android color 4290213746.



This preview shows how white text looks on a background with the Android color 4290213746.

Color Blindness Simulation

Color vision deficiency is a very complex topic, and I could not describe the different causes any better than Wikipedia does, so if you want to learn more, you should check out their [article about color blindness](#).

Dichromacy





Tritanopia
4290278782

Trichromacy



Original Color
4290213746

Protanomaly
4288512631

Deuteranomaly
4289167217

Tritanomaly
4290279034

Monochromacy



Original Color
4290213746

Achromatopsia
4287269514

Achromatomaly
4288316289

CSS Examples

Text

The CSS property to change the color of the text to Android 4290213746 is called "color". The color property can be set on classes, ids or directly on the HTML element.

This example shows how text in the color `rgb(183, 119, 114)` looks like.

```
.text, #text, p{  
    color:rgb(183, 119, 114)  
}
```

If you want to add a text shadow in that color use the text-shadow property, you can generate a text shadow directly with our [CSS Text Shadow Generator](#).

Here you see how black text with a 4 pixel rgb(183, 119, 114) colored shadow looks like.

```
.shadow{ text-shadow: 4px 4px 2px rgb(183, 119, 114) }
```

Border

The CSS property to change the border of an element to Android 4290213746 is called "border". The border property can be set on classes, ids or directly on the HTML element.

This example shows the color as border, it can be applied via the CSS property "border" or "border-color".

```
.border, #border, table{ border:4px solid rgb(183, 119, 114) }
```

If only the border color should be changed use the property `border-color`.

```
.border{ border-color:rgb(183, 119, 114) }
```

If you want to add a box shadow in that color use:

Here you see how a box with a 4 pixel `rgb(183, 119, 114)` colored shadow looks like.

```
.boxshadow{ -moz-box-shadow:4px 4px 4px  
4px rgb(183, 119, 114); -webkit-box-  
shadow:4px 4px 4px 4px rgb(183, 119, 114);  
box-shadow:4px 4px 4px 4px rgb(183, 119,  
114) }
```

Background

The CSS property to change the background color of an element to Android 4290213746 is called "background". The background property can be set on classes, ids or directly on the HTML element.

```
.background, #background, body{  
background: rgb(183, 119, 114) }
```

If only the background color should be changed can be used:

```
.background{ background-color: rgb(183,  
119, 114) }
```

This example shows the color as background, it is applied via the CSS property "background".

To optimize and compress your CSS code, you can use our [online CSS compressor and optimizer](#) based on csstidy. If you want to create a linear or radial gradient as background or border, check our [CSS Gradient Generator](#).

Hey! You found this booklet interesting? Support Converting Colors with the new Membership Option!

The pro membership hides all ads, plus gives you double the colors in the color bucket, and more awesome pro features!

[Learn more, Memberships starting at \\$2.50/m!](#)

**Follow me
on Twitter!**

@ConvertingColor