

# Converting Colors

Android(4290215034)

Have a look what the booklet for  
Android(4290215034) contains.

<b>Android(4290215034)</b> .....	3
<i><b>Conversions</b></i> .....	4
<i><b>Details</b></i> .....	6
<i><b>Harmonies</b></i> .....	11
<i><b>Previews</b></i> .....	23
<i><b>Color Blindness Simulation</b></i> .....	26
<i><b>CSS Examples</b></i> .....	29

**Color**

**Android(4290215034)**

# Conversions

## Conversions Part 1

Format	Color
Hex	<a href="#">B77C7A</a>
RGB	<a href="#">183, 124, 122</a>
RGB Percent	<a href="#">72%, 49%, 48%</a>
CMY	<a href="#">0.2824, 0.5137, 0.5216</a>
CMYK	<a href="#">0.00, 0.32, 0.33, 0.28</a>
HSL	<a href="#">2°, 30%, 60%</a>
HSV	<a href="#">2°, 33%, 72%</a>
XYZ	<a href="#">30.2489, 25.8877, 21.8149</a>
YIQ	<a href="#">141.4130, 35.8060, 11.8860</a>

# Conversions

## Conversions Part 2

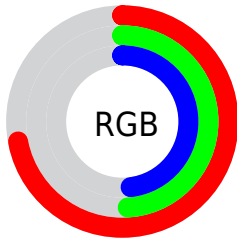
<b>Format</b>	<b>Color</b>
<b>R<sub>YB</sub></b>	183, 124, 122
Decimal	12024954
CIE <sub>Lab</sub>	57.93, 22.71, 10.44
CIE <sub>LCh</sub>	58, 24.990, 24.686
Yxy	25.8877, 0.3880, 0.3321
Android (android.graphics.Color)	4290215034 (0xFFB77C7A)
YUV	141.4130, -9.5706, 36.4718
Hunter-Lab	50.8800, 17.0811, 10.1953

# Details

The Android color `4290215034` is a dark color, and the websafe version is hex `996666`. A complement of this color would be `4286231991`, and the grayscale version is `4287466893`.

A 20% lighter version of the original color is `4293964206`, and `4286597705` is the 20% darker color. If you saturate the color by 10%, you get `4290210408`, and if you desaturate by 10%, it is `4290219660`.

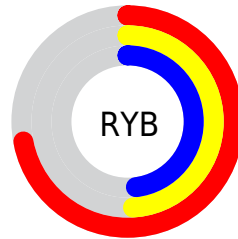
# Distribution



Red (72%)

Green (49%)

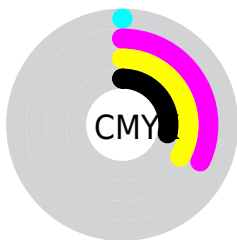
Blue (48%)



Red (72%)

Yellow (49%)

Blue (48%)

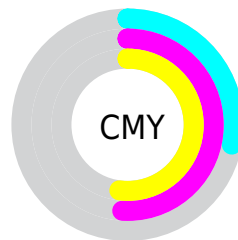


Cyan (0%)

Magenta (32%)

Yellow (33%)

Black (28%)



Cyan (28%)

Magenta (51%)

Yellow (52%)

# Brightness & Saturation Gradients

These gradients show how the Android color 4290215034 changes by changing the brightness by 10 percent. The first figure shows a shift by +10% for each color and the second figure -10%.

Similar to the brightness gradients but the following saturation gradients show a change of the Android color 4290215034 by changing the saturation by 10% instead.



 4290215034

 4290215034


4294967295

 4288373601

 4293964206

 4286597705

 4294954442

 4284887859

 4294961638

 4283178270

 4281599493

 4279959553

 4278190080

 4290215034

 4290215034

 4290210408

 4290219660

 4290206037

 4290224031

 4290201411

 4290228657

 4290196785

 4290233283

 4290192415

 4290237910

 4290187788

 4290242280

 4290184704

 4290246906

 4290248703

# Harmonies

## Analogous

The Analogous color harmony consists of three colors that are next to each other on the color wheel.



4289952656



4290215034



4289692008

# Triad

The Triadic color harmony groups three colors that are evenly spaced from another and form a triangle on the color wheel.



4290215034



4285502577



4285107894

# Complementary

The Complementary color scheme is a pair of colors which are on the opposite of each other on the color wheel.



4290215034



4286231991

# Split Complementary

Split-complementary colors differ from the complementary color scheme. The scheme consists of three colors, the original color and two neighbors of the complement color.



4283339950



4290215034



4283864966

# Square

The Square scheme is like the rectangle color scheme, but the four colors are evenly spaced on the color wheel.



4290215034



4287139683



4282881949



4287203251

# Rectangle

The Rectangle color scheme consists of four colors that form a rectangle on the color wheel.



4290215034



4289037921



4282881949



4284453301



# Sweetspot

The Sweet Spot groups the original color and five complimentary colors.



4290215034



4293777109



4290214582



4286081641



4294440951



4286085240



# Same Dimension

The Same Dimension uses a secret algorithm to generate beautiful new colors.



4290215034



4293759374



4290222714



4284240723



4288414976



4280025344



# Inverse Universe

The Inverse Universe completely reimagines the original color for something new.



4286231991



4287556333



4286224311



4283652956



4278228636

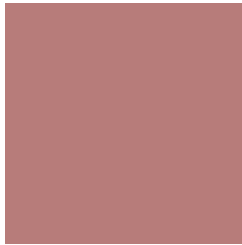


4278197020



# Previews

## White Background



This preview shows how the Android color 4290215034 looks on a white background.

## Color Contrast Check

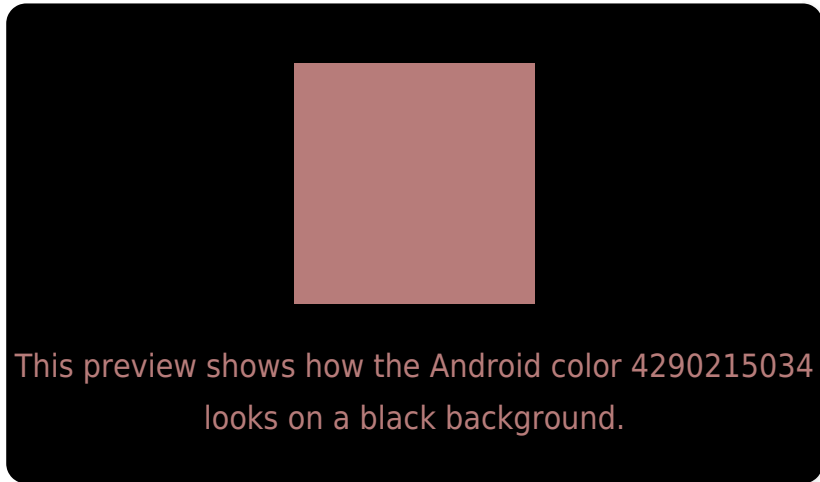
Large Text (above 18pt) WCAG AA ✓ Pass

Any Text WCAG AA ✗ Fail

Large Text (above 18pt) WCAG AAA ✗ Fail

Any Text WCAG AAA ✗ Fail

# Black Background



## Color Contrast Check

Large Text (above 18pt) WCAG AA ✓ Pass

Any Text WCAG AA ✓ Pass

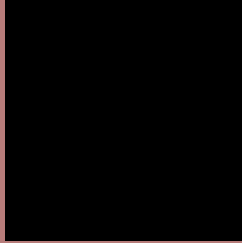
Large Text (above 18pt) WCAG AAA ✓ Pass

Any Text WCAG AAA × Fail

If you want to check with other color combinations, try the [Color Contrast Checker](#).



# Android 4290215034 Background



This preview shows how black text looks on a background with the Android color 4290215034.



This preview shows how white text looks on a background with the Android color 4290215034.

# Color Blindness Simulation

Color vision deficiency is a very complex topic, and I could not describe the different causes any better than Wikipedia does, so if you want to learn more, you should check out their [article about color blindness](#).

## Dichromacy



**Original Color**  
4290215034

**Protanopia**  
4287662978

**Deuteranopia**  
4288710264



# Trichromacy



**Original Color**  
4290215034

**Protanomaly**  
4288579199

**Deuteranomaly**  
4289233529

**Tritanomaly**  
4290280320

# Monochromacy



**Original Color**  
4290215034

**Achromatopsia**  
4287466893

**Achromatomaly**  
4288448390

# CSS Examples

## Text

The CSS property to change the color of the text to Android 4290215034 is called "color". The color property can be set on classes, ids or directly on the HTML element.

This example shows how text in the color `rgb(183, 124, 122)` looks like.

```
.text, #text, p{  
    color:rgb(183, 124, 122)  
}
```

If you want to add a text shadow in that color use the text-shadow property, you can generate a text shadow directly with our [CSS Text Shadow Generator](#).

Here you see how black text with a 4 pixel rgb(183, 124, 122) colored shadow looks like.

```
.shadow{ text-shadow: 4px 4px 2px rgb(183, 124, 122) }
```

## Border

The CSS property to change the border of an element to Android 4290215034 is called "border". The border property can be set on classes, ids or directly on the HTML element.

This example shows the color as border, it can be applied via the CSS property "border" or "border-color".

```
.border, #border, table{ border:4px solid rgb(183, 124, 122) }
```

If only the border color should be changed use the property `border-color`.

```
.border{ border-color:rgb(183, 124, 122) }
```

If you want to add a box shadow in that color use:

Here you see how a box with a 4 pixel `rgb(183, 124, 122)` colored shadow looks like.

```
.boxshadow{ -moz-box-shadow:4px 4px 4px  
4px rgb(183, 124, 122); -webkit-box-  
shadow:4px 4px 4px 4px rgb(183, 124, 122);  
box-shadow:4px 4px 4px 4px rgb(183, 124,  
122) }
```

# Background

The CSS property to change the background color of an element to Android 4290215034 is called "background". The background property can be set on classes, ids or directly on the HTML element.

```
.background, #background, body{  
background: rgb(183, 124, 122) }
```

If only the background color should be changed can be used:

```
.background{ background-color: rgb(183,  
124, 122) }
```

This example shows the color as background, it is applied via the CSS property "background".

To optimize and compress your CSS code, you can use our [online CSS compressor and optimizer](#) based on csstidy. If you want to create a linear or radial gradient as background or border, check our [CSS Gradient Generator](#).



Hey! You found this booklet interesting? Support Converting Colors with the new Membership Option!

The pro membership hides all ads, plus gives you double the colors in the color bucket, and more awesome pro features!

**[Learn more, Memberships starting at \\$2.50/m!](#)**

**Follow me  
on Twitter!**

@ConvertingColor