

# Converting Colors

Android(4290215811)

Have a look what the booklet for  
Android(4290215811) contains.

<b>Android(4290215811)</b> .....	3
<b><i>Conversions</i></b> .....	4
<b><i>Details</i></b> .....	6
<b><i>Harmonies</i></b> .....	11
<b><i>Previews</i></b> .....	23
<b><i>Color Blindness Simulation</i></b> .....	26
<b><i>CSS Examples</i></b> .....	29

# Color

**Android(4290215811)**

# Conversions

## Conversions Part 1

<b>Format</b>	<b>Color</b>
Hex	<b>B77F83</b>
RGB	<b>183, 127, 131</b>
RGB Percent	<b>72%, 50%, 51%</b>
CMY	<b>0.2824, 0.5020, 0.4863</b>
CMYK	<b>0.00, 0.31, 0.28, 0.28</b>
HSL	<b>356°, 28%, 61%</b>
HSV	<b>356°, 31%, 72%</b>
XYZ	<b>31.2145, 26.8847, 25.0168</b>
YIQ	<b>144.2000, 32.0920, 13.1160</b>

# Conversions

## Conversions Part 2

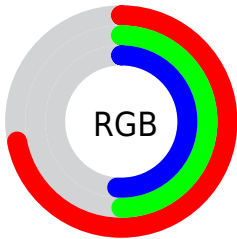
<b>Format</b>	<b>Color</b>
<b>R<sub>YB</sub></b>	183, 127, 131
Decimal	12025731
CIE <sub>Lab</sub>	58.87, 22.26, 6.59
CIE <sub>LCh</sub>	59, 23.215, 16.481
Yxy	26.8847, 0.3756, 0.3235
Android (android.graphics.Color)	4290215811 (0xFFB77F83)
YUV	144.2000, -6.5076, 34.0276
Hunter-Lab	51.8505, 16.7206, 7.6891

# Details

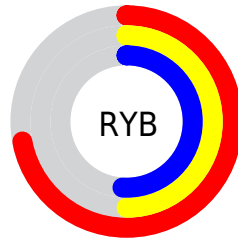
The Android color `4290215811` is a dark color, and the websafe version is hex `CC9999`. A complement of this color would be `4286560179`, and the grayscale version is `4287664272`.

A 20% lighter version of the original color is `4293964984`, and `4286664018` is the 20% darker color. If you saturate the color by 10%, you get `4290211186`, and if you desaturate by 10%, it is `4290220436`.

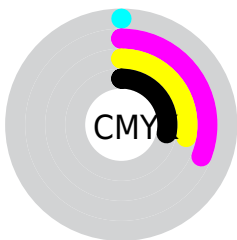
# Distribution



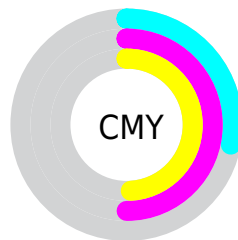
- Red (72%)
- Green (50%)
- Blue (51%)



- Red (72%)
- Yellow (50%)
- Blue (51%)



- Cyan (0%)
- Magenta (31%)
- Yellow (28%)
- Black (28%)



- Cyan (28%)
- Magenta (50%)
- Yellow (49%)

# Brightness & Saturation Gradients

These gradients show how the Android color 4290215811 changes by changing the brightness by 10 percent. The first figure shows a shift by +10% for each color and the second figure -10%.

Similar to the brightness gradients but the following saturation gradients show a change of the Android color 4290215811 by changing the saturation by 10% instead.





4290215811



4290215811

4294967295



4288374378



4293964984



4286664018



4294955220



4284888635



4294962416



4283244325



4281665808



4280221697



4278190080



4290215811



4290215811



4290211186



4290220436

 4290206305

 4290225317

 4290201680

 4290229942

 4290197055

 4290234567

 4290192430

 4290239448

 4290187549

 4290244073

 4290183181

 4290248698

 4290248703

# Harmonies

## Analogous

The Analogous color harmony consists of three colors that are next to each other on the color wheel.



4289757336



4290215811



4289954673

# Triad

The Triadic color harmony groups three colors that are evenly spaced from another and form a triangle on the color wheel.



4290215811



4286223729



4285043381

# Complementary

The Complementary color scheme is a pair of colors which are on the opposite of each other on the color wheel.



4290215811



4286560179

# Split Complementary

Split-complementary colors differ from the complementary color scheme. The scheme consists of three colors, the original color and two neighbors of the complement color.



4283668394



4290215811



4284717187

# Square

The Square scheme is like the rectangle color scheme, but the four colors are evenly spaced on the color wheel.



4290215811



4287729766



4283668888



4286876852

# Rectangle

The Rectangle color scheme consists of four colors that form a rectangle on the color wheel.



4290215811



4289365865



4283668888



4284454066



# Sweetspot

The Sweet Spot groups the original color and five complimentary colors.



4290215811



4293777625



4289888183



4286081900



4294440951



4286085240



# Same Dimension

The Same Dimension uses a secret algorithm to generate beautiful new colors.



4290215811



4293760412



4290221695



4284240723



4288413707



4280025090



# Inverse Universe

The Inverse Universe completely reimagines the original color for something new.



4290215811



4293760412



4286554295



4284240723



4288413707

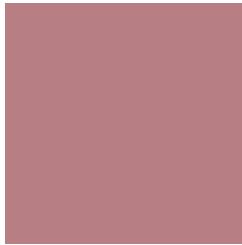


4280025090



# Previews

## White Background



This preview shows how the Android color 4290215811 looks on a white background.

## Color Contrast Check

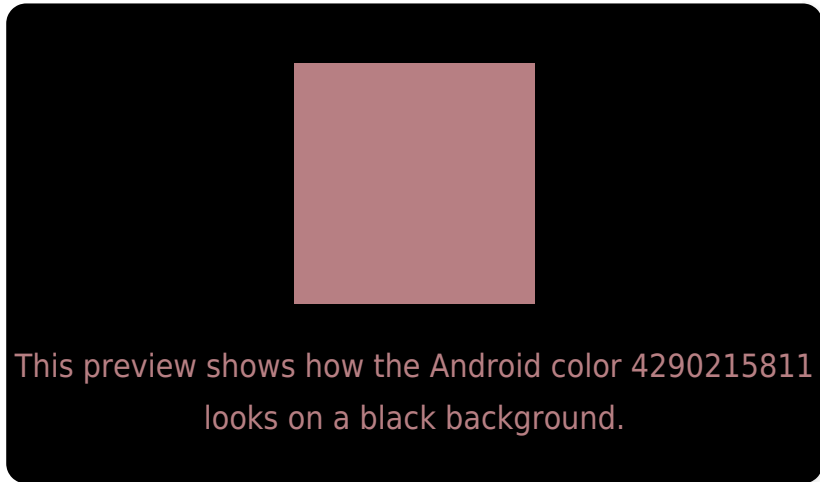
Large Text (above 18pt) WCAG AA ✓ Pass

Any Text WCAG AA ✗ Fail

Large Text (above 18pt) WCAG AAA ✗ Fail

Any Text WCAG AAA ✗ Fail

# Black Background



## Color Contrast Check

Large Text (above 18pt) WCAG AA ✓ Pass

Any Text WCAG AA ✓ Pass

Large Text (above 18pt) WCAG AAA ✓ Pass

Any Text WCAG AAA × Fail

If you want to check with other color combinations, try the [Color Contrast Checker](#).



# Android 4290215811 Background



This preview shows how black text looks on a background with the Android color 4290215811.




This preview shows how white text looks on a background with the Android color 4290215811.

# Color Blindness Simulation

Color vision deficiency is a very complex topic, and I could not describe the different causes any better than Wikipedia does, so if you want to learn more, you should check out their [article about color blindness](#).

## Dichromacy





**Tritanopia**  
4290281096

# Trichromacy



**Original Color**  
4290215811

**Protanomaly**  
4288645256

**Deuteranomaly**  
4289234306

**Tritanomaly**  
4290281094

# Monochromacy



**Original Color**  
4290215811

**Achromatopsia**  
4287664272

**Achromatomaly**  
4288580235

# CSS Examples

## Text

The CSS property to change the color of the text to Android 4290215811 is called "color". The color property can be set on classes, ids or directly on the HTML element.

This example shows how text in the color `rgb(183, 127, 131)` looks like.

```
.text, #text, p{  
    color:rgb(183, 127, 131)  
}
```

If you want to add a text shadow in that color use the text-shadow property, you can generate a text shadow directly with our [CSS Text Shadow Generator](#).

Here you see how black text with a 4 pixel rgb(183, 127, 131) colored shadow looks like.

```
.shadow{ text-shadow: 4px 4px 2px rgb(183, 127, 131) }
```

## Border

The CSS property to change the border of an element to Android 4290215811 is called "border". The border property can be set on classes, ids or directly on the HTML element.

This example shows the color as border, it can be applied via the CSS property "border" or "border-color".

```
.border, #border, table{ border:4px solid rgb(183, 127, 131) }
```

If only the border color should be changed use the property `border-color`.

```
.border{ border-color:rgb(183, 127, 131) }
```

If you want to add a box shadow in that color use:

Here you see how a box with a 4 pixel `rgb(183, 127, 131)` colored shadow looks like.

```
.boxshadow{ -moz-box-shadow:4px 4px 4px  
4px rgb(183, 127, 131); -webkit-box-  
shadow:4px 4px 4px 4px rgb(183, 127, 131);  
box-shadow:4px 4px 4px 4px rgb(183, 127,  
131) }
```

# Background

The CSS property to change the background color of an element to Android 4290215811 is called "background". The background property can be set on classes, ids or directly on the HTML element.

```
.background, #background, body{  
background: rgb(183, 127, 131) }
```

If only the background color should be changed can be used:

```
.background{ background-color: rgb(183,  
127, 131) }
```

This example shows the color as background, it is applied via the CSS property "background".

To optimize and compress your CSS code, you can use our [online CSS compressor and optimizer](#) based on csstidy. If you want to create a linear or radial gradient as background or border, check our [CSS Gradient Generator](#).



Hey! You found this booklet interesting? Support Converting Colors with the new Membership Option!

The pro membership hides all ads, plus gives you double the colors in the color bucket, and more awesome pro features!

**[Learn more, Memberships starting at \\$2.50/m!](#)**

**Follow me  
on Twitter!**

@ConvertingColor