

Converting Colors

Android(4290216271)

Have a look what the booklet for
Android(4290216271) contains.

| | |
|--|----|
| Android(4290216271) | 3 |
| <i>Conversions</i> | 4 |
| <i>Details</i> | 6 |
| <i>Harmonies</i> | 11 |
| <i>Previews</i> | 23 |
| <i>Color Blindness Simulation</i> | 26 |
| <i>CSS Examples</i> | 29 |

Color

Android(4290216271)

Conversions

Conversions Part 1

| Format | Color |
|---------------|-----------------------------------|
| Hex | B7814F |
| RGB | 183, 129, 79 |
| RGB Percent | 72%, 51%, 31% |
| CMY | 0.2824, 0.4941, 0.6902 |
| CMYK | 0.00, 0.30, 0.57, 0.28 |
| HSL | 29°, 42%, 51% |
| HSV | 29°, 57%, 72% |
| XYZ | 28.7900, 26.3323, 10.9624 |
| YIQ | 139.4460, 48.2340, -4.1020 |

Conversions

Conversions Part 2

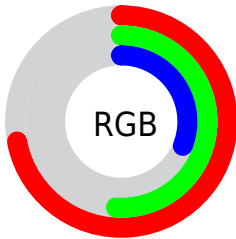
| Format | Color |
|-------------------------------------|--------------------------------|
| RYB | 183, 175, 79 |
| Decimal | 12026191 |
| CIELab | 58.35, 15.31, 35.15 |
| CIELCh | 58, 38.341, 66.459 |
| Yxy | 26.3323, 0.4357, 0.3985 |
| Android (android.graphics.Color) | 4290216271 (0xFFB7814F) |
| YUV | 139.4460, -29.7999, 38.1969 |
| Hunter-Lab | 51.3150, 10.3451, 23.2544 |

Details

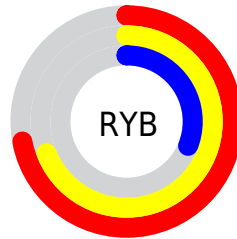
The Android color `4290216271` is a dark color, and the websafe version is hex `CC9966`. A complement of this color would be `4283401655`, and the grayscale version is `4287401100`.

A 20% lighter version of the original color is `4294096513`, and `4286533664` is the 20% darker color. If you saturate the color by 10%, you get `4290213693`, and if you desaturate by 10%, it is `4290218849`.

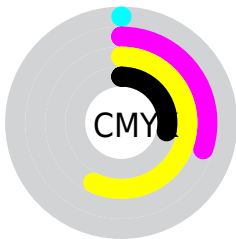
Distribution



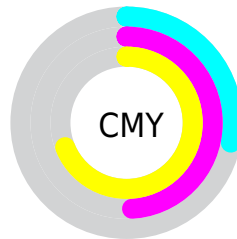
- Red (72%)
- Green (51%)
- Blue (31%)



- Red (72%)
- Yellow (69%)
- Blue (31%)



- Cyan (0%)
- Magenta (30%)
- Yellow (57%)
- Black (28%)



- Cyan (28%)
- Magenta (49%)
- Yellow (69%)

Brightness & Saturation Gradients

These gradients show how the Android color 4290216271 changes by changing the brightness by 10 percent. The first figure shows a shift by +10% for each color and the second figure -10%.

Similar to the brightness gradients but the following saturation gradients show a change of the Android color 4290216271 by changing the saturation by 10% instead.



4290216271



4290216271

4294967295



4288374839



4294096513



4286533664



4294955676



4284758280



4294962871



4282983168



4294967251



4281273856



4294967279



4279435264



4278190080



4290216271



4290216271



4290213693



4290218849

4290211370

4290221172

4290208792

4290223750

4290206470

4290226072

4290205696

4290228651

4290230973

4290233551

4290235873

4290238452

Harmonies

Analogous

The Analogous color harmony consists of three colors that are next to each other on the color wheel.



4291393126



4290216271



4288318792

Triad

The Triadic color harmony groups three colors that are evenly spaced from another and form a triangle on the color wheel.



4290216271



4278230675



4288250306

Complementary

The Complementary color scheme is a pair of colors which are on the opposite of each other on the color wheel.



4290216271



4283401655

Split Complementary

Split-complementary colors differ from the complementary color scheme. The scheme consists of three colors, the original color and two neighbors of the complement color.



4284779983



4290216271



4278230195

Square

The Square scheme is like the rectangle color scheme, but the four colors are evenly spaced on the color wheel.



4290216271



4283145328



4278228937



4290540968

Rectangle

The Rectangle color scheme consists of four colors that form a rectangle on the color wheel.



4290216271



4286813006



4278228937



4287202760

Sweetspot

The Sweet Spot groups the original color and five complimentary colors.



4290216271



4293777605



4290203526



4286081888



4294440951



4286085240

Same Dimension

The Same Dimension uses a secret algorithm to generate beautiful new colors.



4290216271



4293761356



4290229327



4284241747



4288432896



4280028416

Inverse Universe

The Inverse Universe completely reimagines the original color for something new.



4283401655



4283212013



4283388599



4283651932



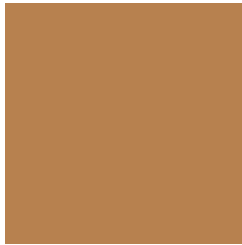
4278210972



4278193948

Previews

White Background



This preview shows how the Android color 4290216271 looks on a white background.

Color Contrast Check

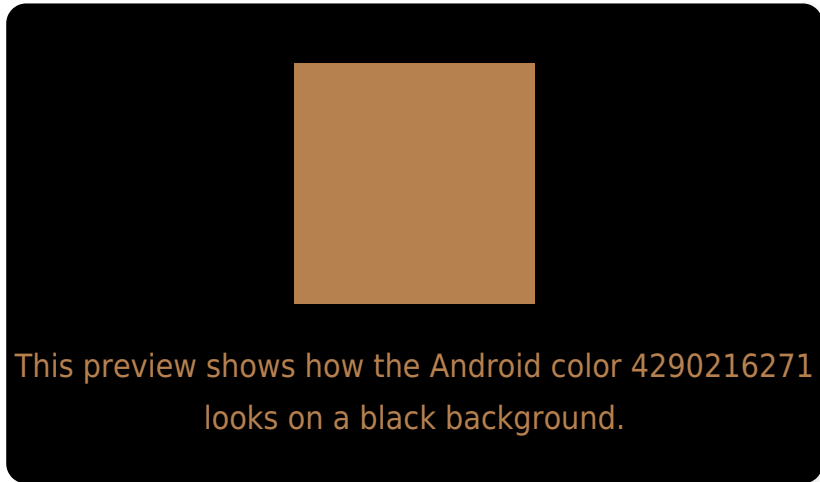
Large Text (above 18pt) WCAG AA ✓ Pass

Any Text WCAG AA ✗ Fail

Large Text (above 18pt) WCAG AAA ✗ Fail

Any Text WCAG AAA ✗ Fail

Black Background



Color Contrast Check

Large Text (above 18pt) WCAG AA ✓ Pass

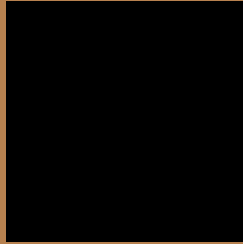
Any Text WCAG AA ✓ Pass

Large Text (above 18pt) WCAG AAA ✓ Pass

Any Text WCAG AAA × Fail

If you want to check with other color combinations, try the [Color Contrast Checker](#).

Android 4290216271 Background



This preview shows how black text looks on a background with the Android color 4290216271.



This preview shows how white text looks on a background with the Android color 4290216271.

Color Blindness Simulation

Color vision deficiency is a very complex topic, and I could not describe the different causes any better than Wikipedia does, so if you want to learn more, you should check out their [article about color blindness](#).

Dichromacy



Original Color
4290216271

Protanopia
4288318803

Deuteranopia
4289496654



Tritanopia
4290476932

Trichromacy



Original Color
4290216271

Protanomaly
4289038674

Deuteranomaly
4289758286

Tritanomaly
4290411889

Monochromacy



Original Color
4290216271

Achromatopsia
4287335307

Achromatomaly
4288382837

CSS Examples

Text

The CSS property to change the color of the text to Android 4290216271 is called "color". The color property can be set on classes, ids or directly on the HTML element.

This example shows how text in the color `rgb(183, 129, 79)` looks like.

```
.text, #text, p{  
    color:rgb(183, 129, 79)  
}
```

If you want to add a text shadow in that color use the text-shadow property, you can generate a text shadow directly with our [CSS Text Shadow Generator](#).

Here you see how black text with a 4 pixel rgb(183, 129, 79) colored shadow looks like.

```
.shadow{ text-shadow: 4px 4px 2px rgb(183, 129, 79) }
```

Border

The CSS property to change the border of an element to Android 4290216271 is called "border". The border property can be set on classes, ids or directly on the HTML element.

This example shows the color as border, it can be applied via the CSS property "border" or "border-color".

```
.border, #border, table{ border:4px solid rgb(183, 129, 79) }
```

If only the border color should be changed use the property `border-color`.

```
.border{ border-color:rgb(183, 129, 79) }
```

If you want to add a box shadow in that color use:

Here you see how a box with a 4 pixel `rgb(183, 129, 79)` colored shadow looks like.

```
.boxshadow{ -moz-box-shadow:4px 4px 4px  
4px rgb(183, 129, 79); -webkit-box-  
shadow:4px 4px 4px 4px rgb(183, 129, 79);  
box-shadow:4px 4px 4px 4px rgb(183, 129,  
79) }
```

Background

The CSS property to change the background color of an element to Android 4290216271 is called "background". The background property can be set on classes, ids or directly on the HTML element.

```
.background, #background, body{  
background: rgb(183, 129, 79) }
```

If only the background color should be changed can be used:

```
.background{ background-color: rgb(183,  
129, 79) }
```

This example shows the color as background, it is applied via the CSS property "background".

To optimize and compress your CSS code, you can use our [online CSS compressor and optimizer](#) based on csstidy. If you want to create a linear or radial gradient as background or border, check our [CSS Gradient Generator](#).

Hey! You found this booklet interesting? Support Converting Colors with the new Membership Option!

The pro membership hides all ads, plus gives you double the colors in the color bucket, and more awesome pro features!

[Learn more, Memberships starting at \\$2.50/m!](#)

**Follow me
on Twitter!**

@ConvertingColor