

Converting Colors

Android(4290218579)

Have a look what the booklet for
Android(4290218579) contains.

Android(4290218579)	3
<i>Conversions</i>	4
<i>Details</i>	6
<i>Harmonies</i>	11
<i>Previews</i>	23
<i>Color Blindness Simulation</i>	26
<i>CSS Examples</i>	29

Color

Android(4290218579)

Conversions

Conversions Part 1

Format	Color
Hex	B78A53
RGB	183, 138, 83
RGB Percent	72%, 54%, 33%
CMY	0.2824, 0.4588, 0.6745
CMYK	0.00, 0.25, 0.55, 0.28
HSL	33°, 41%, 52%
HSV	33°, 55%, 72%
XYZ	30.1783, 28.8688, 12.1653
YIQ	145.1850, 44.4750, -7.5650

Conversions

Conversions Part 2

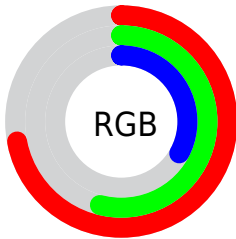
Format	Color
R _Y B	165, 183, 83
Decimal	12028499
CIE Lab	60.67, 10.65, 35.85
CIE LCh	61, 37.403, 73.457
Yxy	28.8688, 0.4238, 0.4054
Android (android.graphics.Color)	4290218579 (0xFFB78A53)
YUV	145.1850, -30.6572, 33.1638
Hunter-Lab	53.7297, 6.2309, 24.1865

Details

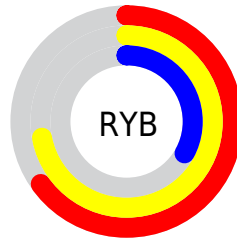
The Android color **4290218579** is a dark color, and the websafe version is hex **CC9966**. A complement of this color would be **4283662519**, and the grayscale version is **4287730065**.

A 20% lighter version of the original color is **4294033286**, and **4286535716** is the 20% darker color. If you saturate the color by 10%, you get **4290216513**, and if you desaturate by 10%, it is **4290220645**.

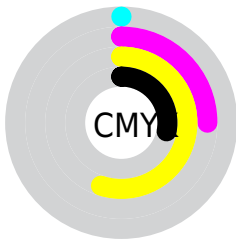
Distribution



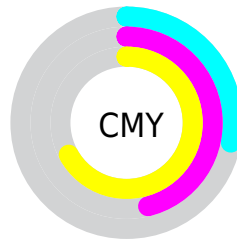
- Red (72%)
- Green (54%)
- Blue (33%)



- Red (65%)
- Yellow (72%)
- Blue (33%)



- Cyan (0%)
- Magenta (25%)
- Yellow (55%)
- Black (28%)



- Cyan (28%)
- Magenta (46%)
- Yellow (67%)

Brightness & Saturation Gradients

These gradients show how the Android color 4290218579 changes by changing the brightness by 10 percent. The first figure shows a shift by +10% for each color and the second figure -10%.

Similar to the brightness gradients but the following saturation gradients show a change of the Android color 4290218579 by changing the saturation by 10% instead.



4290218579



4290218579

4294967295



4288377147



4294033286



4286535716



4294957984



4284760331



4294965435



4283116288



4294967255



4281406976



4294967284



4279828480



4278190080



4290218579



4290218579



4290216513



4290220645

 4290214446

 4290222712

 4290212124

 4290225034

 4290210058

 4290227100

 4290209024

 4290229167

 4290231233

 4290233555

 4290235621

 4290237688

Harmonies

Analogous

The Analogous color harmony consists of three colors that are next to each other on the color wheel.



4291592038



4290218579



4288255313

Triad

The Triadic color harmony groups three colors that are evenly spaced from another and form a triangle on the color wheel.



4290218579



4278232225



4289299650

Complementary

The Complementary color scheme is a pair of colors which are on the opposite of each other on the color wheel.



4290218579



4283662519

Split Complementary

Split-complementary colors differ from the complementary color scheme. The scheme consists of three colors, the original color and two neighbors of the complement color.



4286157266



4290218579



4278231487

Square

The Square scheme is like the rectangle color scheme, but the four colors are evenly spaced on the color wheel.



4290218579



4282950270



4281899985



4291263142

Rectangle

The Rectangle color scheme consists of four colors that form a rectangle on the color wheel.



4290218579



4286683994



4281899985



4288383177

Sweetspot

The Sweet Spot groups the original color and five complimentary colors.



4290218579



4293778631



4290204544



4286082657



4294440951



4286085240

Same Dimension

The Same Dimension uses a secret algorithm to generate beautiful new colors.



4290218579



4293764945



4290033491



4284242003



4288435712



4280028928

Inverse Universe

The Inverse Universe completely reimagines the original color for something new.



4283662519



4283537389



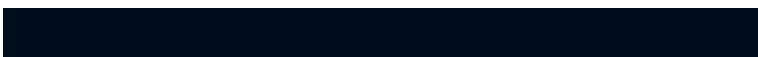
4283978679



4283651932



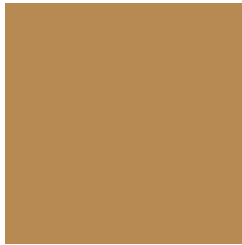
4278208156



4278193436

Previews

White Background



This preview shows how the Android color 4290218579 looks on a white background.

Color Contrast Check

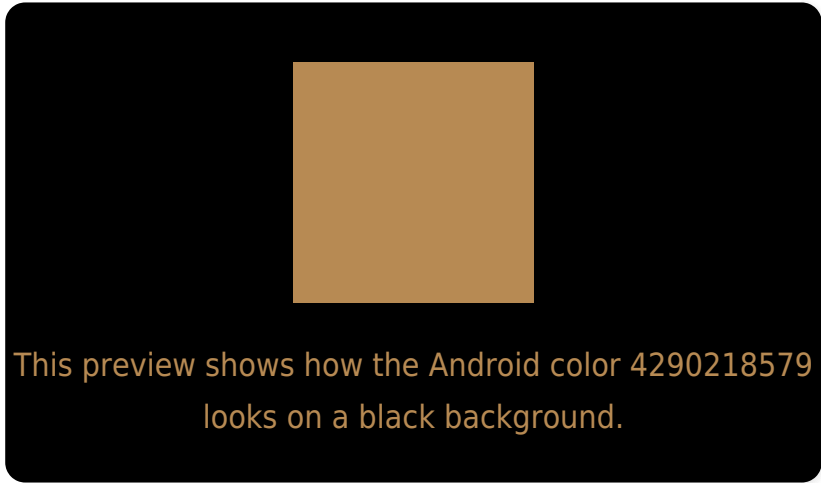
Large Text (above 18pt) WCAG AA ✓ Pass

Any Text WCAG AA ✗ Fail

Large Text (above 18pt) WCAG AAA ✗ Fail

Any Text WCAG AAA ✗ Fail

Black Background



Color Contrast Check

Large Text (above 18pt) WCAG AA ✓ Pass

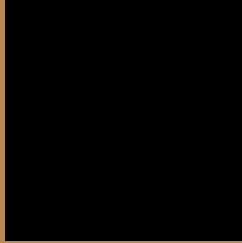
Any Text WCAG AA ✓ Pass

Large Text (above 18pt) WCAG AAA ✓ Pass

Any Text WCAG AAA × Fail

If you want to check with other color combinations, try the [Color Contrast Checker](#).

Android 4290218579 Background



This preview shows how black text looks on a background with the Android color 4290218579.



This preview shows how white text looks on a background with the Android color 4290218579.

Color Blindness Simulation

Color vision deficiency is a very complex topic, and I could not describe the different causes any better than Wikipedia does, so if you want to learn more, you should check out their [article about color blindness](#).

Dichromacy



Original Color
4290218579

Protanopia
4288779094

Deuteranopia
4289956947

Trichromacy



Original Color
4290218579

Protanomaly
4289302613

Deuteranomaly
4290022227

Tritanomaly
4290414200

Monochromacy



Original Color
4290218579

Achromatopsia
4287730065

Achromatomaly
4288646778

CSS Examples

Text

The CSS property to change the color of the text to Android 4290218579 is called "color". The color property can be set on classes, ids or directly on the HTML element.

This example shows how text in the color `rgb(183, 138, 83)` looks like.

```
.text, #text, p{  
    color:rgb(183, 138, 83)  
}
```

If you want to add a text shadow in that color use the text-shadow property, you can generate a text shadow directly with our [CSS Text Shadow Generator](#).

Here you see how black text with a 4 pixel rgb(183, 138, 83) colored shadow looks like.

```
.shadow{ text-shadow: 4px 4px 2px rgb(183, 138, 83) }
```

Border

The CSS property to change the border of an element to Android 4290218579 is called "border". The border property can be set on classes, ids or directly on the HTML element.

This example shows the color as border, it can be applied via the CSS property "border" or "border-color".

```
.border, #border, table{ border:4px solid rgb(183, 138, 83) }
```

If only the border color should be changed use the property `border-color`.

```
.border{ border-color:rgb(183, 138, 83) }
```

If you want to add a box shadow in that color use:

Here you see how a box with a 4 pixel `rgb(183, 138, 83)` colored shadow looks like.

```
.boxshadow{ -moz-box-shadow:4px 4px 4px  
4px rgb(183, 138, 83); -webkit-box-  
shadow:4px 4px 4px 4px rgb(183, 138, 83);  
box-shadow:4px 4px 4px 4px rgb(183, 138,  
83) }
```

Background

The CSS property to change the background color of an element to Android 4290218579 is called "background". The background property can be set on classes, ids or directly on the HTML element.

```
.background, #background, body{  
background: rgb(183, 138, 83) }
```

If only the background color should be changed can be used:

```
.background{ background-color: rgb(183,  
138, 83) }
```

This example shows the color as background, it is applied via the CSS property "background".

To optimize and compress your CSS code, you can use our [online CSS compressor and optimizer](#) based on csstidy. If you want to create a linear or radial gradient as background or border, check our [CSS Gradient Generator](#).

Hey! You found this booklet interesting? Support Converting Colors with the new Membership Option!

The pro membership hides all ads, plus gives you double the colors in the color bucket, and more awesome pro features!

[Learn more, Memberships starting at \\$2.50/m!](#)

**Follow me
on Twitter!**

@ConvertingColor