

Converting Colors

Android(4290219151)

Have a look what the booklet for
Android(4290219151) contains.

Android(4290219151)	3
<i>Conversions</i>	4
<i>Details</i>	6
<i>Harmonies</i>	11
<i>Previews</i>	23
<i>Color Blindness Simulation</i>	26
<i>CSS Examples</i>	29

Color

Android(4290219151)

Conversions

Conversions Part 1

Format	Color
Hex	B78C8F
RGB	183, 140, 143
RGB Percent	72%, 55%, 56%
CMY	0.2824, 0.4510, 0.4392
CMYK	0.00, 0.23, 0.22, 0.28
HSL	356°, 23%, 63%
HSV	356°, 23%, 72%
XYZ	33.8644, 30.8066, 30.1480
YIQ	153.1990, 24.6650, 10.0490

Conversions

Conversions Part 2

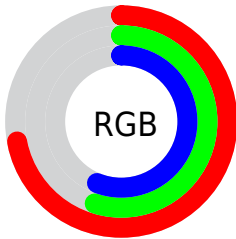
Format	Color
RYB	183, 140, 143
Decimal	12029071
CIELab	62.34, 16.77, 4.72
CIElCh	62, 17.425, 15.717
Yxy	30.8066, 0.3571, 0.3249
Android (android.graphics.Color)	4290219151 (0xFFB78C8F)
YUV	153.1990, -5.0281, 26.1355
Hunter-Lab	55.5037, 11.7766, 6.6480

Details

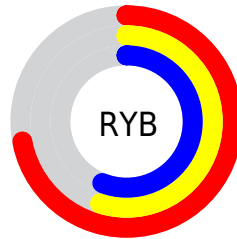
The Android color `4290219151` is a light color, and the websafe version is hex `CC9999`. A complement of this color would be `4287412148`, and the grayscale version is `4288256409`.

A 20% lighter version of the original color is `4293968581`, and `4286667357` is the 20% darker color. If you saturate the color by 10%, you get `4290214526`, and if you desaturate by 10%, it is `4290223776`.

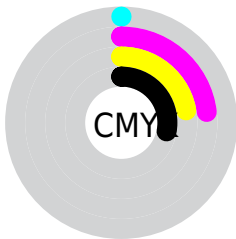
Distribution



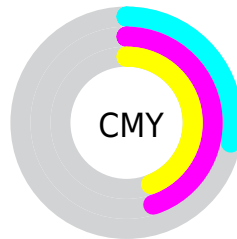
- Red (72%)
- Green (55%)
- Blue (56%)



- Red (72%)
- Yellow (55%)
- Blue (56%)



- Cyan (0%)
- Magenta (23%)
- Yellow (22%)
- Black (28%)



- Cyan (28%)
- Magenta (45%)
- Yellow (44%)

Brightness & Saturation Gradients

These gradients show how the Android color 4290219151 changes by changing the brightness by 10 percent. The first figure shows a shift by +10% for each color and the second figure -10%.

Similar to the brightness gradients but the following saturation gradients show a change of the Android color 4290219151 by changing the saturation by 10% instead.



4290219151



4290219151

4294967295



4288442997



4293968581



4286667357



4294958817



4284957253



4294966013



4283378479



4281800218



4280549376



4278190080



4290219151



4290219151



4290214526



4290223776

 4290209645

 4290228657

 4290205020

 4290233282

 4290200395

 4290237907

 4290195770

 4290242788

 4290190889

 4290247413

 4290186264

 4290248703

 4290183181

Harmonies

Analogous

The Analogous color harmony consists of three colors that are next to each other on the color wheel.



4289826207



4290219151



4290023297

Triad

The Triadic color harmony groups three colors that are evenly spaced from another and form a triangle on the color wheel.



4290219151



4287143297



4286356148

Complementary

The Complementary color scheme is a pair of colors which are on the opposite of each other on the color wheel.



4290219151



4287412148

Split Complementary

Split-complementary colors differ from the complementary color scheme. The scheme consists of three colors, the original color and two neighbors of the complement color.



4285505196



4290219151



4286095247

Square

The Square scheme is like the rectangle color scheme, but the four colors are evenly spaced on the color wheel.



4290219151



4288321657



4285440158



4287665588

Rectangle

The Rectangle color scheme consists of four colors that form a rectangle on the color wheel.



4290219151



4289630587



4285440158



4285963442

Sweetspot

The Sweet Spot groups the original color and five complimentary colors.



4290219151



4293778910



4289957047



4286082671



4294440951



4286085240

Same Dimension

The Same Dimension uses a secret algorithm to generate beautiful new colors.



4290219151



4293766063



4290223756



4284240723



4288413707



4280025090

Inverse Universe

The Inverse Universe completely reimagines the original color for something new.



4290219151



4293766063



4287407543



4284240723



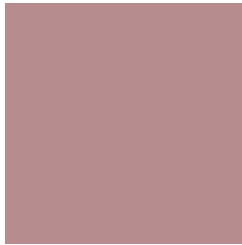
4288413707



4280025090

Previews

White Background



This preview shows how the Android color 4290219151 looks on a white background.

Color Contrast Check

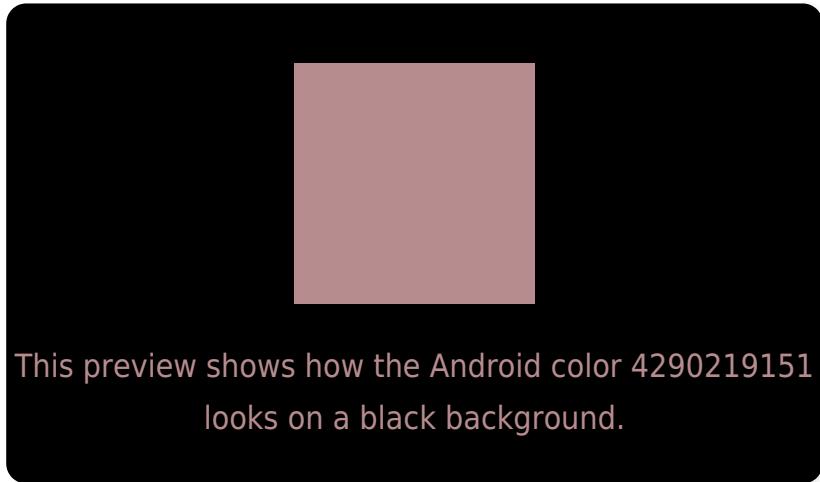
Large Text (above 18pt) WCAG AA × Fail

Any Text WCAG AA × Fail

Large Text (above 18pt) WCAG AAA × Fail

Any Text WCAG AAA × Fail

Black Background



Color Contrast Check

Large Text (above 18pt) WCAG AA ✓ Pass

Any Text WCAG AA ✓ Pass

Large Text (above 18pt) WCAG AAA ✓ Pass

Any Text WCAG AAA ✓ Pass

If you want to check with other color combinations, try the [Color Contrast Checker](#).

Android 4290219151 Background



This preview shows how black text looks on a background with the Android color 4290219151.



This preview shows how white text looks on a background with the Android color 4290219151.

Color Blindness Simulation

Color vision deficiency is a very complex topic, and I could not describe the different causes any better than Wikipedia does, so if you want to learn more, you should check out their [article about color blindness](#).

Dichromacy



Original Color
4290219151

Protanopia
4288321173

Deuteranopia
4289303182



Tritanopia
4290284438

Trichromacy



Original Color
4290219151

Protanomaly
4289041043

Deuteranomaly
4289630350

Tritanomaly
4290284435

Monochromacy



Original Color
4290219151

Achromatopsia
4288256409

Achromatomaly
4288976021

CSS Examples

Text

The CSS property to change the color of the text to Android 4290219151 is called "color". The color property can be set on classes, ids or directly on the HTML element.

This example shows how text in the color `rgb(183, 140, 143)` looks like.

```
.text, #text, p{  
    color:rgb(183, 140, 143)  
}
```

If you want to add a text shadow in that color use the text-shadow property, you can generate a text shadow directly with our [CSS Text Shadow Generator](#).

Here you see how black text with a 4 pixel rgb(183, 140, 143) colored shadow looks like.

```
.shadow{ text-shadow: 4px 4px 2px rgb(183, 140, 143) }
```

Border

The CSS property to change the border of an element to Android 4290219151 is called "border". The border property can be set on classes, ids or directly on the HTML element.

This example shows the color as border, it can be applied via the CSS property "border" or "border-color".

```
.border, #border, table{ border:4px solid rgb(183, 140, 143) }
```

If only the border color should be changed use the property `border-color`.

```
.border{ border-color:rgb(183, 140, 143) }
```

If you want to add a box shadow in that color use:

Here you see how a box with a 4 pixel `rgb(183, 140, 143)` colored shadow looks like.

```
.boxshadow{ -moz-box-shadow:4px 4px 4px  
4px rgb(183, 140, 143); -webkit-box-  
shadow:4px 4px 4px 4px rgb(183, 140, 143);  
box-shadow:4px 4px 4px 4px rgb(183, 140,  
143) }
```

Background

The CSS property to change the background color of an element to Android 4290219151 is called "background". The background property can be set on classes, ids or directly on the HTML element.

```
.background, #background, body{  
background: rgb(183, 140, 143) }
```

If only the background color should be changed can be used:

```
.background{ background-color: rgb(183,  
140, 143) }
```

This example shows the color as background, it is applied via the CSS property "background".

To optimize and compress your CSS code, you can use our [online CSS compressor and optimizer](#) based on csstidy. If you want to create a linear or radial gradient as background or border, check our [CSS Gradient Generator](#).

Hey! You found this booklet interesting? Support Converting Colors with the new Membership Option!

The pro membership hides all ads, plus gives you double the colors in the color bucket, and more awesome pro features!

[Learn more, Memberships starting at \\$2.50/m!](#)

**Follow me
on Twitter!**

@ConvertingColor