

Converting Colors

Android(4290223775)

Have a look what the booklet for
Android(4290223775) contains.

Android(4290223775)	3
<i>Conversions</i>	4
<i>Details</i>	6
<i>Harmonies</i>	11
<i>Previews</i>	23
<i>Color Blindness Simulation</i>	26
<i>CSS Examples</i>	29

Color

Android(4290223775)

Conversions

Conversions Part 1

Format	Color
Hex	B79E9F
RGB	183, 158, 159
RGB Percent	72%, 62%, 62%
CMY	0.2824, 0.3804, 0.3765
CMYK	0.00, 0.14, 0.13, 0.28
HSL	358°, 15%, 67%
HSV	358°, 14%, 72%
XYZ	38.0133, 37.0242, 37.9438
YIQ	165.5890, 14.5790, 5.6110

Conversions

Conversions Part 2

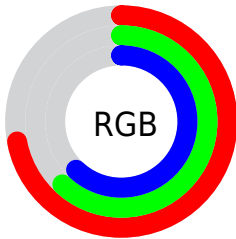
Format	Color
R _Y B	183, 158, 159
Decimal	12033695
CIE Lab	67.30, 9.35, 2.87
CIE LCh	67, 9.785, 17.059
Yxy	37.0242, 0.3365, 0.3277
Android (android.graphics.Color)	4290223775 (0xFFB79E9F)
YUV	165.5890, -3.2484, 15.2694
Hunter-Lab	60.8475, 5.0313, 5.6208

Details

The Android color `4290223775` is a light color, and the websafe version is hex `999999`. A complement of this color would be `4288591798`, and the grayscale version is `4289111718`.

A 20% lighter version of the original color is `4293907926`, and `4286737260` is the 20% darker color. If you saturate the color by 10%, you get `4290219149`, and if you desaturate by 10%, it is `4290228401`.

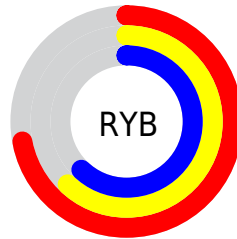
Distribution



Red (72%)

Green (62%)

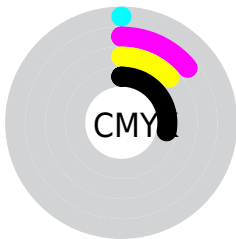
Blue (62%)



Red (72%)

Yellow (62%)

Blue (62%)

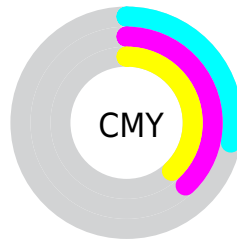


Cyan (0%)

Magenta (14%)

Yellow (13%)

Black (28%)



Cyan (28%)

Magenta (38%)

Yellow (38%)

Brightness & Saturation Gradients

These gradients show how the Android color 4290223775 changes by changing the brightness by 10 percent. The first figure shows a shift by +10% for each color and the second figure -10%.

Similar to the brightness gradients but the following saturation gradients show a change of the Android color 4290223775 by changing the saturation by 10% instead.



4290223775



4290223775

4294967295



4288447621



4293907926



4286737260



4294963698



4285026899



4283448124



4281935399



4280488210



4278190080



4290223775



4290223775



4290219149



4290228401

 4290214268

 4290233282

 4290209642

 4290237908

 4290205017

 4290242533

 4290200391

 4290247415

 4290195510

 4290248703

 4290190884

 4290186258

 4290183175

Harmonies

Analogous

The Analogous color harmony consists of three colors that are next to each other on the color wheel.



4290027176



4290223775



4290092951

Triad

The Triadic color harmony groups three colors that are evenly spaced from another and form a triangle on the color wheel.



4290223775



4288391064



4288063157

Complementary

The Complementary color scheme is a pair of colors which are on the opposite of each other on the color wheel.



4290223775



4288591798

Split Complementary

Split-complementary colors differ from the complementary color scheme. The scheme consists of three colors, the original color and two neighbors of the complement color.



4287604912



4290223775



4287867296

Square

The Square scheme is like the rectangle color scheme, but the four colors are evenly spaced on the color wheel.



4290223775



4289111443



4287539625



4288783285

Rectangle

The Rectangle color scheme consists of four colors that form a rectangle on the color wheel.



4290223775



4289896852



4287539625



4287932340

Sweetspot

The Sweet Spot groups the original color and five complimentary colors.



4290223775



4293780708



4290158263



4286083698



4294440951



4286085240

Same Dimension

The Same Dimension uses a secret algorithm to generate beautiful new colors.



4290223775



4293773257



4290226590



4284240723



4288413702



4280025089

Inverse Universe

The Inverse Universe completely reimagines the original color for something new.



4290223775



4293773257



4288588983



4284240723



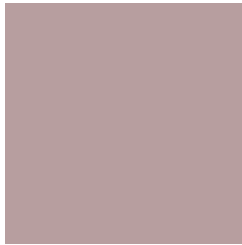
4288413702



4280025089

Previews

White Background



This preview shows how the Android color 4290223775 looks on a white background.

Color Contrast Check

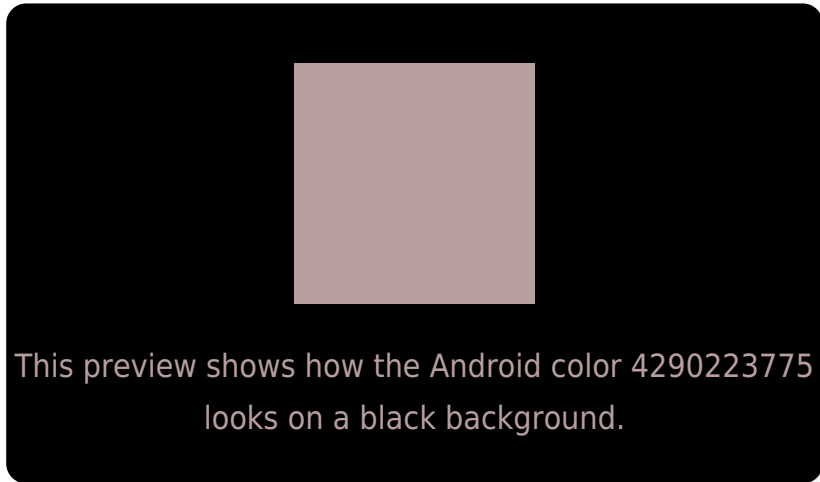
Large Text (above 18pt) WCAG AA × Fail

Any Text WCAG AA × Fail

Large Text (above 18pt) WCAG AAA × Fail

Any Text WCAG AAA × Fail

Black Background



Color Contrast Check

Large Text (above 18pt) WCAG AA ✓ Pass

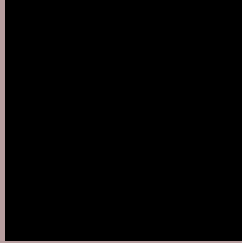
Any Text WCAG AA ✓ Pass

Large Text (above 18pt) WCAG AAA ✓ Pass

Any Text WCAG AAA ✓ Pass

If you want to check with other color combinations, try the [Color Contrast Checker](#).

Android 4290223775 Background



This preview shows how black text looks on a background with the Android color 4290223775.



This preview shows how white text looks on a background with the Android color 4290223775.

Color Blindness Simulation

Color vision deficiency is a very complex topic, and I could not describe the different causes any better than Wikipedia does, so if you want to learn more, you should check out their [article about color blindness](#).


Dichromacy



Original Color
4290223775

Protanopia
4289176482

Deuteranopia
4290158495



Tritanopia
4290288809

Trichromacy



Original Color
4290223775

Protanomaly
4289569185

Deuteranomaly
4290158495

Tritanomaly
4290289061

Monochromacy



Original Color
4290223775

Achromatopsia
4289111718

Achromatomaly
4289504163

CSS Examples

Text

The CSS property to change the color of the text to Android 4290223775 is called "color". The color property can be set on classes, ids or directly on the HTML element.

This example shows how text in the color `rgb(183, 158, 159)` looks like.

```
.text, #text, p{  
    color:rgb(183, 158, 159)  
}
```

If you want to add a text shadow in that color use the text-shadow property, you can generate a text shadow directly with our [CSS Text Shadow Generator](#).

Here you see how black text with a 4 pixel rgb(183, 158, 159) colored shadow looks like.

```
.shadow{ text-shadow: 4px 4px 2px rgb(183, 158, 159) }
```

Border

The CSS property to change the border of an element to Android 4290223775 is called "border". The border property can be set on classes, ids or directly on the HTML element.

This example shows the color as border, it can be applied via the CSS property "border" or "border-color".

```
.border, #border, table{ border:4px solid rgb(183, 158, 159) }
```

If only the border color should be changed use the property `border-color`.

```
.border{ border-color:rgb(183, 158, 159) }
```

If you want to add a box shadow in that color use:

Here you see how a box with a 4 pixel `rgb(183, 158, 159)` colored shadow looks like.

```
.boxshadow{ -moz-box-shadow:4px 4px 4px  
4px rgb(183, 158, 159); -webkit-box-  
shadow:4px 4px 4px 4px rgb(183, 158, 159);  
box-shadow:4px 4px 4px 4px rgb(183, 158,  
159) }
```

Background

The CSS property to change the background color of an element to Android 4290223775 is called "background". The background property can be set on classes, ids or directly on the HTML element.

```
.background, #background, body{  
background: rgb(183, 158, 159) }
```

If only the background color should be changed can be used:

```
.background{ background-color: rgb(183,  
158, 159) }
```

This example shows the color as background, it is applied via the CSS property "background".

To optimize and compress your CSS code, you can use our [online CSS compressor and optimizer](#) based on csstidy. If you want to create a linear or radial gradient as background or border, check our [CSS Gradient Generator](#).

Hey! You found this booklet interesting? Support Converting Colors with the new Membership Option!

The pro membership hides all ads, plus gives you double the colors in the color bucket, and more awesome pro features!

[Learn more, Memberships starting at \\$2.50/m!](#)

**Follow me
on Twitter!**

@ConvertingColor