

Converting Colors

Android(4290224288)

Have a look what the booklet for
Android(4290224288) contains.

Android(4290224288)	3
<i>Conversions</i>	4
<i>Details</i>	6
<i>Harmonies</i>	11
<i>Previews</i>	23
<i>Color Blindness Simulation</i>	26
<i>CSS Examples</i>	29

Color

Android(4290224288)

Conversions

Conversions Part 1

Format	Color
Hex	B7A0A0
RGB	183, 160, 160
RGB Percent	72%, 63%, 63%
CMY	0.2824, 0.3725, 0.3725
CMYK	0.00, 0.13, 0.13, 0.28
HSL	0°, 14%, 67%
HSV	0°, 13%, 72%
XYZ	38.4444, 37.7470, 38.5174
YIQ	166.8770, 13.7080, 4.8760

Conversions

Conversions Part 2

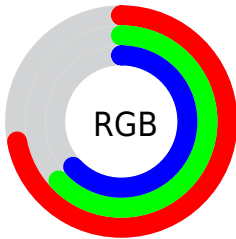
Format	Color
RYB	183, 160, 160
Decimal	12034208
CIELab	67.83, 8.42, 3.09
CIELCh	68, 8.971, 20.171
Yxy	37.7470, 0.3351, 0.3291
Android (android.graphics.Color)	4290224288 (0xFFB7A0A0)
YUV	166.8770, -3.3904, 14.1399
Hunter-Lab	61.4386, 4.1767, 5.8366

Details

The Android color `4290224288` is a light color, and the websafe version is hex `999999`. A complement of this color would be `4288722871`, and the grayscale version is `4289177511`.

A 20% lighter version of the original color is `4293908439`, and `4286737773` is the 20% darker color. If you saturate the color by 10%, you get `4290219662`, and if you desaturate by 10%, it is `4290228914`.

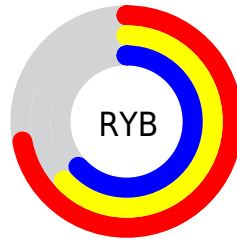
Distribution



Red (72%)

Green (63%)

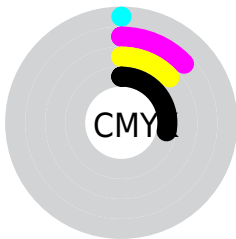
Blue (63%)



Red (72%)

Yellow (63%)

Blue (63%)

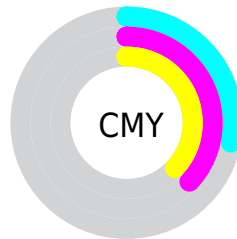


Cyan (0%)

Magenta (13%)

Yellow (13%)

Black (28%)



Cyan (28%)

Magenta (37%)

Yellow (37%)

Brightness & Saturation Gradients

These gradients show how the Android color 4290224288 changes by changing the brightness by 10 percent. The first figure shows a shift by +10% for each color and the second figure -10%.

Similar to the brightness gradients but the following saturation gradients show a change of the Android color 4290224288 by changing the saturation by 10% instead.

 4290224288

 4290224288

4294967295

 4288448134


 4293908439

 4286737773

 4294964211

 4285092948

 4283448637

 4281935655

 4280488723

 4278190080

 4290224288

 4290224288

 4290219662

 4290228914

 4290214779

 4290233797

 4290210153

 4290238423

 4290205527

 4290243049

 4290200901

 4290247932

 4290196018

 4290248703

 4290191392

 4290186766

 4290183168

Harmonies

Analogous

The Analogous color harmony consists of three colors that are next to each other on the color wheel.



4290027688



4290224288



4290093465

Triad

The Triadic color harmony groups three colors that are evenly spaced from another and form a triangle on the color wheel.



4290224288



4288522651



4288325557

Complementary

The Complementary color scheme is a pair of colors which are on the opposite of each other on the color wheel.



4290224288



4288722871

Split Complementary

Split-complementary colors differ from the complementary color scheme. The scheme consists of three colors, the original color and two neighbors of the complement color.



4287867313



4290224288



4287998626

Square

The Square scheme is like the rectangle color scheme, but the four colors are evenly spaced on the color wheel.



4290224288



4289111702



4287736490



4288980148

Rectangle

The Rectangle color scheme consists of four colors that form a rectangle on the color wheel.



4290224288



4289831830



4287736490



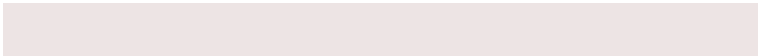
4288129204

Sweetspot

The Sweet Spot groups the original color and five complimentary colors.



4290224288



4293780708



4290224311



4286083698



4294440951



4286085240

Same Dimension

The Same Dimension uses a secret algorithm to generate beautiful new colors.



4290224288



4293774026



4290227360



4284240723



4288413696



4280025088

Inverse Universe

The Inverse Universe completely reimagines the original color for something new.



4288722871



4291489261



4288720055



4283653212



4278230172



4278197276

Previews

White Background



This preview shows how the Android color 4290224288 looks on a white background.

Color Contrast Check

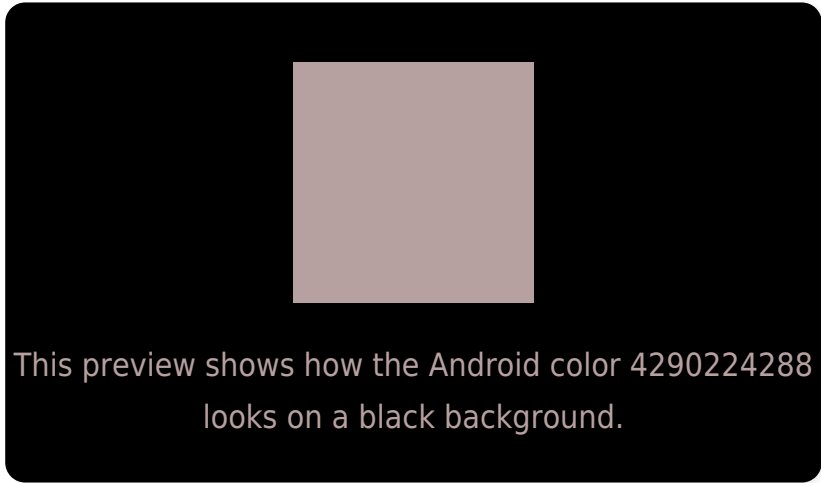
Large Text (above 18pt) WCAG AA × Fail

Any Text WCAG AA × Fail

Large Text (above 18pt) WCAG AAA × Fail

Any Text WCAG AAA × Fail

Black Background



Color Contrast Check

Large Text (above 18pt) WCAG AA ✓ Pass

Any Text WCAG AA ✓ Pass

Large Text (above 18pt) WCAG AAA ✓ Pass

Any Text WCAG AAA ✓ Pass

If you want to check with other color combinations, try the [Color Contrast Checker](#).

Android 4290224288 Background



This preview shows how black text looks on a background with the Android color 4290224288.



This preview shows how white text looks on a background with the Android color 4290224288.

Color Blindness Simulation

Color vision deficiency is a very complex topic, and I could not describe the different causes any better than Wikipedia does, so if you want to learn more, you should check out their [article about color blindness](#).

Dichromacy



Original Color
4290224288

Protanopia
4289308067

Deuteranopia
4290224288



Tritanopia
4290289323

Trichromacy



Original Color
4290224288

Protanomaly
4289635234

Deuteranomaly
4290224288

Tritanomaly
4290289575

Monochromacy



Original Color
4290224288

Achromatopsia
4289177511

Achromatomaly
4289569956

CSS Examples

Text

The CSS property to change the color of the text to Android 4290224288 is called "color". The color property can be set on classes, ids or directly on the HTML element.

This example shows how text in the color `rgb(183, 160, 160)` looks like.

```
.text, #text, p{  
    color:rgb(183, 160, 160)  
}
```

If you want to add a text shadow in that color use the text-shadow property, you can generate a text shadow directly with our [CSS Text Shadow Generator](#).

Here you see how black text with a 4 pixel rgb(183, 160, 160) colored shadow looks like.

```
.shadow{ text-shadow: 4px 4px 2px rgb(183, 160, 160) }
```

Border

The CSS property to change the border of an element to Android 4290224288 is called "border". The border property can be set on classes, ids or directly on the HTML element.

This example shows the color as border, it can be applied via the CSS property "border" or "border-color".

```
.border, #border, table{ border:4px solid rgb(183, 160, 160) }
```

If only the border color should be changed use the property `border-color`.

```
.border{ border-color:rgb(183, 160, 160) }
```

If you want to add a box shadow in that color use:

Here you see how a box with a 4 pixel `rgb(183, 160, 160)` colored shadow looks like.

```
.boxshadow{ -moz-box-shadow:4px 4px 4px  
4px rgb(183, 160, 160); -webkit-box-  
shadow:4px 4px 4px 4px rgb(183, 160, 160);  
box-shadow:4px 4px 4px 4px rgb(183, 160,  
160) }
```

Background

The CSS property to change the background color of an element to Android 4290224288 is called "background". The background property can be set on classes, ids or directly on the HTML element.

```
.background, #background, body{  
background: rgb(183, 160, 160) }
```

If only the background color should be changed can be used:

```
.background{ background-color: rgb(183,  
160, 160) }
```

This example shows the color as background, it is applied via the CSS property "background".

To optimize and compress your CSS code, you can use our [online CSS compressor and optimizer](#) based on csstidy. If you want to create a linear or radial gradient as background or border, check our [CSS Gradient Generator](#).

Hey! You found this booklet interesting? Support Converting Colors with the new Membership Option!

The pro membership hides all ads, plus gives you double the colors in the color bucket, and more awesome pro features!

[Learn more, Memberships starting at \\$2.50/m!](#)

**Follow me
on Twitter!**

@ConvertingColor