

Converting Colors

Android(4290275946)

Have a look what the booklet for
Android(4290275946) contains.

Android(4290275946)	3
<i>Conversions</i>	4
<i>Details</i>	6
<i>Harmonies</i>	11
<i>Previews</i>	23
<i>Color Blindness Simulation</i>	26
<i>CSS Examples</i>	29

Color

Android(4290275946)

Conversions

Conversions Part 1

Format	Color
Hex	B86A6A
RGB	184, 106, 106
RGB Percent	72%, 42%, 42%
CMY	0.2784, 0.5843, 0.5843
CMYK	0.00, 0.42, 0.42, 0.28
HSL	0°, 35%, 57%
HSV	0°, 42%, 72%
XYZ	27.5227, 21.5390, 16.3425
YIQ	129.3220, 46.4880, 16.5360

Conversions

Conversions Part 2

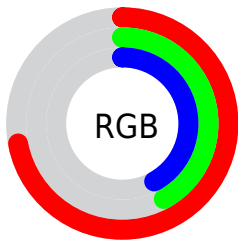
Format	Color
RYB	184, 106, 106
Decimal	12085866
CIELab	53.53, 31.07, 13.60
CIElCh	54, 33.920, 23.636
Yxy	21.5390, 0.4208, 0.3293
Android (android.graphics.Color)	4290275946 (0xFFB86A6A)
YUV	129.3220, -11.4977, 47.9526
Hunter-Lab	46.4102, 24.6385, 11.6092

Details

The Android color **4290275946** is a dark color, and the websafe version is hex **CC6666**. A complement of this color would be **4285184184**, and the grayscale version is **4286677377**.

A 20% lighter version of the original color is **4294090397**, and **4286593339** is the 20% darker color. If you saturate the color by 10%, you get **4290271320**, and if you desaturate by 10%, it is **4290280572**.

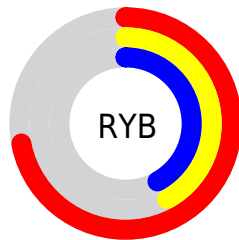
Distribution



Red (72%)

Green (42%)

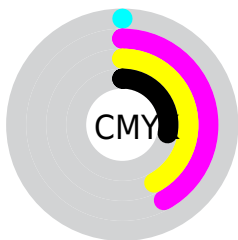
Blue (42%)



Red (72%)

Yellow (42%)

Blue (42%)

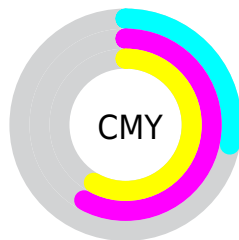


Cyan (0%)

Magenta (42%)

Yellow (42%)

Black (28%)



Cyan (28%)

Magenta (58%)

Yellow (58%)

Brightness & Saturation Gradients

These gradients show how the Android color 4290275946 changes by changing the brightness by 10 percent. The first figure shows a shift by +10% for each color and the second figure -10%.

Similar to the brightness gradients but the following saturation gradients show a change of the Android color 4290275946 by changing the saturation by 10% instead.

 4290275946

 4290275946

4294967295

 4288434514

 4294090397

 4286593339

 4294949560

 4284817701

 4294956756

 4283041553

 4294963952

 4281466880

 4278714368

 4278190080

 4290275946

 4290275946

 4290271320

 4290280572

 4290266437

 4290285455

 4290261811

 4290290081

 4290256928

 4290294964

 4290252302

 4290299590

 4290248704

 4290304216

 4290309099

 4290313725

 4290314239

Harmonies

Analogous

The Analogous color harmony consists of three colors that are next to each other on the color wheel.



4290013575



4290275946



4289622610

Triad

The Triadic color harmony groups three colors that are evenly spaced from another and form a triangle on the color wheel.



4290275946



4284058716



4282811834

Complementary

The Complementary color scheme is a pair of colors which are on the opposite of each other on the color wheel.



4290275946



4285184184

Split Complementary

Split-complementary colors differ from the complementary color scheme. The scheme consists of three colors, the original color and two neighbors of the complement color.



4278226094



4290275946



4281175928

Square

The Square scheme is like the rectangle color scheme, but the four colors are evenly spaced on the color wheel.



4290275946



4286285129



4278226838



4286217141

Rectangle

The Rectangle color scheme consists of four colors that form a rectangle on the color wheel.



4290275946



4288706888



4278226838



4281436087

Sweetspot

The Sweet Spot groups the original color and five complimentary colors.



4290275946



4293972433



4290276024



4286080357



4294440951



4286085240

Same Dimension

The Same Dimension uses a secret algorithm to generate beautiful new colors.



4290275946



4293948789



4290285930



4284240723



4288413696



4280025088

Inverse Universe

The Inverse Universe completely reimagines the original color for something new.



4285184184



4285919472



4285174200



4283653212



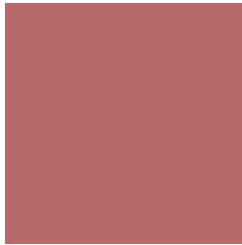
4278230172



4278197276

Previews

White Background



This preview shows how the Android color 4290275946 looks on a white background.

Color Contrast Check

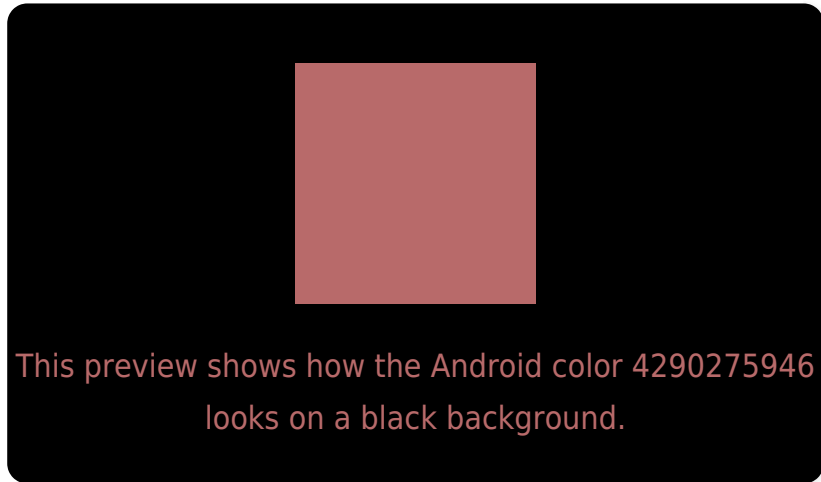
Large Text (above 18pt) WCAG AA ✓ Pass

Any Text WCAG AA ✗ Fail

Large Text (above 18pt) WCAG AAA ✗ Fail

Any Text WCAG AAA ✗ Fail

Black Background



Color Contrast Check

Large Text (above 18pt) WCAG AA ✓ Pass

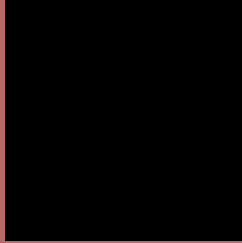
Any Text WCAG AA ✓ Pass

Large Text (above 18pt) WCAG AAA ✓ Pass

Any Text WCAG AAA × Fail

If you want to check with other color combinations, try the [Color Contrast Checker](#).

Android 4290275946 Background



This preview shows how black text looks on a background with the Android color 4290275946.




This preview shows how white text looks on a background with the Android color 4290275946.

Color Blindness Simulation

Color vision deficiency is a very complex topic, and I could not describe the different causes any better than Wikipedia does, so if you want to learn more, you should check out their [article about color blindness](#).

Dichromacy





Tritanopia
4290341233

Trichromacy



Original Color
4290275946

Protanomaly
4288182385

Deuteranomaly
4288836968

Tritanomaly
4290341230

Monochromacy



Original Color
4290275946

Achromatopsia
4286677377

Achromatomaly
4287986041

CSS Examples

Text

The CSS property to change the color of the text to Android 4290275946 is called "color". The color property can be set on classes, ids or directly on the HTML element.

This example shows how text in the color `rgb(184, 106, 106)` looks like.

```
.text, #text, p{  
    color:rgb(184, 106, 106)  
}
```

If you want to add a text shadow in that color use the text-shadow property, you can generate a text shadow directly with our [CSS Text Shadow Generator](#).

Here you see how black text with a 4 pixel rgb(184, 106, 106) colored shadow looks like.

```
.shadow{ text-shadow: 4px 4px 2px rgb(184, 106, 106) }
```

Border

The CSS property to change the border of an element to Android 4290275946 is called "border". The border property can be set on classes, ids or directly on the HTML element.

This example shows the color as border, it can be applied via the CSS property "border" or "border-color".

```
.border, #border, table{ border:4px solid rgb(184, 106, 106) }
```

If only the border color should be changed use the property `border-color`.

```
.border{ border-color:rgb(184, 106, 106) }
```

If you want to add a box shadow in that color use:

Here you see how a box with a 4 pixel `rgb(184, 106, 106)` colored shadow looks like.

```
.boxshadow{ -moz-box-shadow:4px 4px 4px  
4px rgb(184, 106, 106); -webkit-box-  
shadow:4px 4px 4px 4px rgb(184, 106, 106);  
box-shadow:4px 4px 4px 4px rgb(184, 106,  
106) }
```

Background

The CSS property to change the background color of an element to Android 4290275946 is called "background". The background property can be set on classes, ids or directly on the HTML element.

```
.background, #background, body{  
background: rgb(184, 106, 106) }
```

If only the background color should be changed can be used:

```
.background{ background-color: rgb(184,  
106, 106) }
```

This example shows the color as background, it is applied via the CSS property "background".

To optimize and compress your CSS code, you can use our [online CSS compressor and optimizer](#) based on csstidy. If you want to create a linear or radial gradient as background or border, check our [CSS Gradient Generator](#).

Hey! You found this booklet interesting? Support Converting Colors with the new Membership Option!

The pro membership hides all ads, plus gives you double the colors in the color bucket, and more awesome pro features!

[Learn more, Memberships starting at \\$2.50/m!](#)

**Follow me
on Twitter!**

@ConvertingColor