

# Converting Colors

Android(4290278769)

Have a look what the booklet for  
Android(4290278769) contains.

<b>Android(4290278769)</b> .....	3
<b><i>Conversions</i></b> .....	4
<b><i>Details</i></b> .....	6
<b><i>Harmonies</i></b> .....	11
<b><i>Previews</i></b> .....	23
<b><i>Color Blindness Simulation</i></b> .....	26
<b><i>CSS Examples</i></b> .....	29

# Color

**Android(4290278769)**

# Conversions

## Conversions Part 1

<b>Format</b>	<b>Color</b>
Hex	<a href="#">B87571</a>
RGB	<a href="#">184, 117, 113</a>
RGB Percent	<a href="#">72%, 46%, 44%</a>
CMY	<a href="#">0.2784, 0.5412, 0.5569</a>
CMYK	<a href="#">0.00, 0.36, 0.39, 0.28</a>
HSL	<a href="#">3°, 33%, 58%</a>
HSV	<a href="#">3°, 39%, 72%</a>
XYZ	<a href="#">29.1091, 24.1052, 18.7413</a>
YIQ	<a href="#">136.5770, 41.2160, 12.9600</a>

# Conversions

## Conversions Part 2

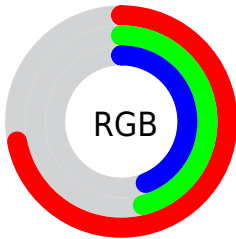
<b>Format</b>	<b>Color</b>
<b>RYB</b>	184, 117, 113
Decimal	12088689
CIELab	56.19, 25.85, 13.22
CIELCh	56, 29.035, 27.080
Yxy	24.1052, 0.4045, 0.3350
Android (android.graphics.Color)	4290278769 (0xFFB87571)
YUV	136.5770, -11.6235, 41.5900
Hunter-Lab	49.0970, 19.9109, 11.7357

# Details

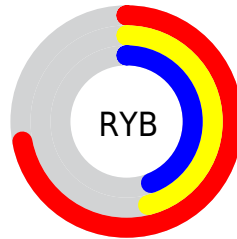
The Android color `4290278769` is a dark color, and the websafe version is hex `996666`. A complement of this color would be `4285641912`, and the grayscale version is `4287203721`.

A 20% lighter version of the original color is `4294093477`, and `4286661697` is the 20% darker color. If you saturate the color by 10%, you get `4290274399`, and if you desaturate by 10%, it is `4290283139`.

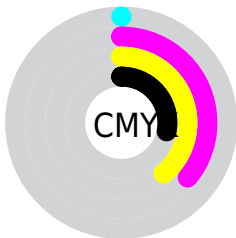
# Distribution



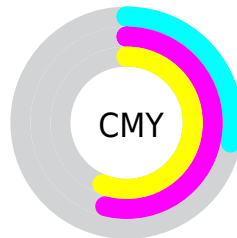
- Red (72%)
- Green (46%)
- Blue (44%)



- Red (72%)
- Yellow (46%)
- Blue (44%)



- Cyan (0%)
- Magenta (36%)
- Yellow (39%)
- Black (28%)



- Cyan (28%)
- Magenta (54%)
- Yellow (56%)

# Brightness & Saturation Gradients

These gradients show how the Android color 4290278769 changes by changing the brightness by 10 percent. The first figure shows a shift by +10% for each color and the second figure -10%.

Similar to the brightness gradients but the following saturation gradients show a change of the Android color 4290278769 by changing the saturation by 10% instead.





4290278769



4290278769

4294967295



4288437337



4294093477



4286661697



4294952384



4284886059



4294959580



4283176215



4294967032



4281532416



4279566336



4278190080



4290278769



4290278769



4290274399



4290283139

 4290269772

 4290287766

 4290265402

 4290292136

 4290261031

 4290296507

 4290256405

 4290301133

 4290252035

 4290305503

 4290251264

 4290310130

 4290314239

# Harmonies

## Analogous

The Analogous color harmony consists of three colors that are next to each other on the color wheel.



4290081930



4290278769



4289625181

# Triad

The Triadic color harmony groups three colors that are evenly spaced from another and form a triangle on the color wheel.



4290278769



4284715626



4284517049

# Complementary

The Complementary color scheme is a pair of colors which are on the opposite of each other on the color wheel.



4290278769



4285641912

# Split Complementary

Split-complementary colors differ from the complementary color scheme. The scheme consists of three colors, the original color and two neighbors of the complement color.



4281962672



4290278769



4282619011

# Square

The Square scheme is like the rectangle color scheme, but the four colors are evenly spaced on the color wheel.



4290278769



4286614617



4281111709



4287005108

# Rectangle

The Rectangle color scheme consists of four colors that form a rectangle on the color wheel.



4290278769



4288840022



4281111709



4283600055



# Sweetspot

The Sweet Spot groups the original color and five complimentary colors.



4290278769



4293973459



4290277812



4286081127



4294440951



4286085240



# Same Dimension

The Same Dimension uses a secret algorithm to generate beautiful new colors.



4290278769



4293953665



4290287729



4284240723



4288416000



4280025600



# Inverse Universe

The Inverse Universe completely reimagines the original color for something new.



4285641912



4286704112



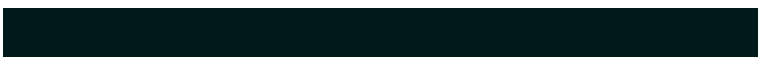
4285632952



4283652956



4278227868

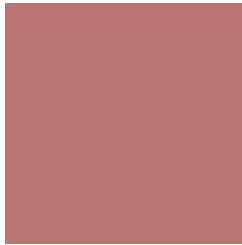


4278196764



# Previews

## White Background



This preview shows how the Android color 4290278769 looks on a white background.

## Color Contrast Check

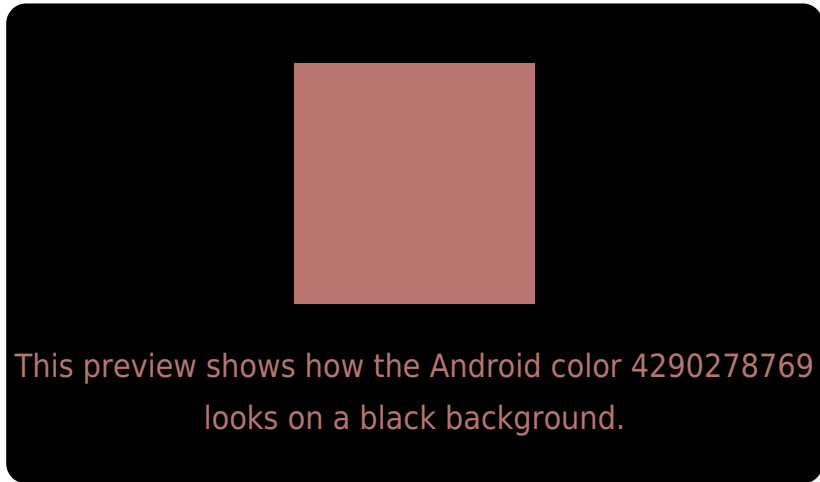
Large Text (above 18pt) WCAG AA ✓ Pass

Any Text WCAG AA ✗ Fail

Large Text (above 18pt) WCAG AAA ✗ Fail

Any Text WCAG AAA ✗ Fail

# Black Background



## Color Contrast Check

Large Text (above 18pt) WCAG AA ✓ Pass

Any Text WCAG AA ✓ Pass

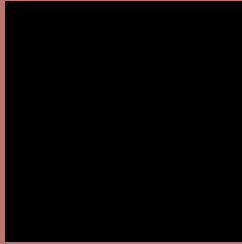
Large Text (above 18pt) WCAG AAA ✓ Pass

Any Text WCAG AAA × Fail

If you want to check with other color combinations, try the [Color Contrast Checker](#).



# Android 4290278769 Background



This preview shows how black text looks on a background with the Android color 4290278769.



This preview shows how white text looks on a background with the Android color 4290278769.

# Color Blindness Simulation

Color vision deficiency is a very complex topic, and I could not describe the different causes any better than Wikipedia does, so if you want to learn more, you should check out their [article about color blindness](#).

## Dichromacy



**Original Color**  
4290278769

**Protanopia**  
4287465338

**Deuteranopia**  
4288512623



# Trichromacy



**Original Color**  
4290278769

**Protanomaly**  
4288512119

**Deuteranomaly**  
4289166704

**Tritanomaly**  
4290344056

# Monochromacy



**Original Color**  
4290278769

**Achromatopsia**  
4287203721

**Achromatomaly**  
4288316032

# CSS Examples

## Text

The CSS property to change the color of the text to Android 4290278769 is called "color". The color property can be set on classes, ids or directly on the HTML element.

This example shows how text in the color `rgb(184, 117, 113)` looks like.

```
.text, #text, p{  
    color:rgb(184, 117, 113)  
}
```

If you want to add a text shadow in that color use the text-shadow property, you can generate a text shadow directly with our [CSS Text Shadow Generator](#).

Here you see how black text with a 4 pixel rgb(184, 117, 113) colored shadow looks like.

```
.shadow{ text-shadow: 4px 4px 2px rgb(184, 117, 113) }
```

## Border

The CSS property to change the border of an element to Android 4290278769 is called "border". The border property can be set on classes, ids or directly on the HTML element.

This example shows the color as border, it can be applied via the CSS property "border" or "border-color".

```
.border, #border, table{ border:4px solid rgb(184, 117, 113) }
```

If only the border color should be changed use the property `border-color`.

```
.border{ border-color:rgb(184, 117, 113) }
```

If you want to add a box shadow in that color use:

Here you see how a box with a 4 pixel `rgb(184, 117, 113)` colored shadow looks like.

```
.boxshadow{ -moz-box-shadow:4px 4px 4px  
4px rgb(184, 117, 113); -webkit-box-  
shadow:4px 4px 4px 4px rgb(184, 117, 113);  
box-shadow:4px 4px 4px 4px rgb(184, 117,  
113) }
```

# Background

The CSS property to change the background color of an element to Android 4290278769 is called "background". The background property can be set on classes, ids or directly on the HTML element.

```
.background, #background, body{  
background: rgb(184, 117, 113) }
```

If only the background color should be changed can be used:

```
.background{ background-color: rgb(184,  
117, 113) }
```

This example shows the color as background, it is applied via the CSS property "background".

To optimize and compress your CSS code, you can use our [online CSS compressor and optimizer](#) based on csstidy. If you want to create a linear or radial gradient as background or border, check our [CSS Gradient Generator](#).



Hey! You found this booklet interesting? Support Converting Colors with the new Membership Option!

The pro membership hides all ads, plus gives you double the colors in the color bucket, and more awesome pro features!

**[Learn more, Memberships starting at \\$2.50/m!](#)**

**Follow me  
on Twitter!**

@ConvertingColor