

Converting Colors

Android(4290281600)

Have a look what the booklet for
Android(4290281600) contains.

Android(4290281600)	3
<i>Conversions</i>	4
<i>Details</i>	6
<i>Harmonies</i>	11
<i>Previews</i>	23
<i>Color Blindness Simulation</i>	26
<i>CSS Examples</i>	29

Color

Android(4290281600)

Conversions

Conversions Part 1

Format	Color
Hex	B88080
RGB	184, 128, 128
RGB Percent	72%, 50%, 50%
CMY	0.2784, 0.4980, 0.4980
CMYK	0.00, 0.30, 0.30, 0.28
HSL	0°, 28%, 61%
HSV	0°, 30%, 72%
XYZ	31.3826, 27.1872, 24.0157
YIQ	144.7440, 33.3760, 11.8720

Conversions

Conversions Part 2

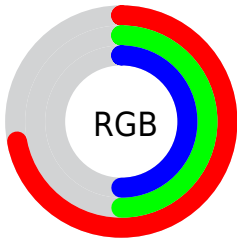
Format	Color
RYB	184, 128, 128
Decimal	12091520
CIELab	59.15, 21.67, 8.72
CIELCh	59, 23.364, 21.928
Yxy	27.1872, 0.3800, 0.3292
Android (android.graphics.Color)	4290281600 (0xFFB88080)
YUV	144.7440, -8.2548, 34.4275
Hunter-Lab	52.1413, 16.1875, 9.1907

Details

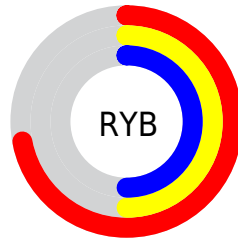
The Android color `4290281600` is a light color, and the websafe version is hex `CC9999`. A complement of this color would be `4286625976`, and the grayscale version is `4287730065`.

A 20% lighter version of the original color is `4294030773`, and `4286664271` is the 20% darker color. If you saturate the color by 10%, you get `4290276974`, and if you desaturate by 10%, it is `4290286226`.

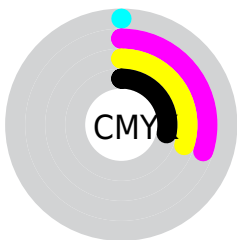
Distribution



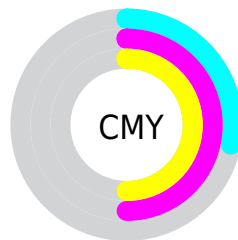
- Red (72%)
- Green (50%)
- Blue (50%)



- Red (72%)
- Yellow (50%)
- Blue (50%)



- Cyan (0%)
- Magenta (30%)
- Yellow (30%)
- Black (28%)



- Cyan (28%)
- Magenta (50%)
- Yellow (50%)

Brightness & Saturation Gradients

These gradients show how the Android color 4290281600 changes by changing the brightness by 10 percent. The first figure shows a shift by +10% for each color and the second figure -10%.

Similar to the brightness gradients but the following saturation gradients show a change of the Android color 4290281600 by changing the saturation by 10% instead.



4290281600



4290281600

4294967295



4288440167



4294030773



4286664271



4294955472



4284954424



4294962669



4283310115



4281666061



4280287233



4278190080



4290281600



4290281600



4290276974



4290286226

 4290272091

 4290291109

 4290267465

 4290295735

 4290262582

 4290300618

 4290257956

 4290305244

 4290253330

 4290309870

 4290248704

 4290314239

Harmonies

Analogous

The Analogous color harmony consists of three colors that are next to each other on the color wheel.



4289953941



4290281600



4289889391

Triad

The Triadic color harmony groups three colors that are evenly spaced from another and form a triangle on the color wheel.



4290281600



4285962101



4285371063

Complementary

The Complementary color scheme is a pair of colors which are on the opposite of each other on the color wheel.



4290281600



4286625976

Split Complementary

Split-complementary colors differ from the complementary color scheme. The scheme consists of three colors, the original color and two neighbors of the complement color.



4283865006



4290281600



4284521096

Square

The Square scheme is like the rectangle color scheme, but the four colors are evenly spaced on the color wheel.



4290281600



4287468136



4283538077



4287269812

Rectangle

The Rectangle color scheme consists of four colors that form a rectangle on the color wheel.



4290281600



4289235304



4283538077



4284781749

Sweetspot

The Sweet Spot groups the original color and five complimentary colors.



4290281600



4293974746



4290281656



4286081899



4294440951



4286085240

Same Dimension

The Same Dimension uses a secret algorithm to generate beautiful new colors.



4290281600



4293957527



4290288768



4284240723



4288413696



4280025088

Inverse Universe

The Inverse Universe completely reimagines the original color for something new.



4286625976



4288147696



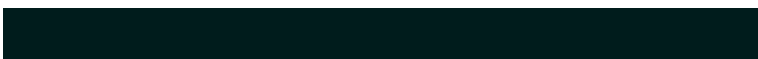
4286618808



4283653212



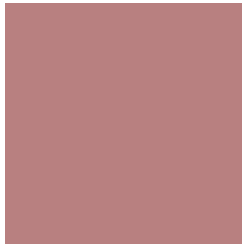
4278230172



4278197276

Previews

White Background



This preview shows how the Android color 4290281600 looks on a white background.

Color Contrast Check

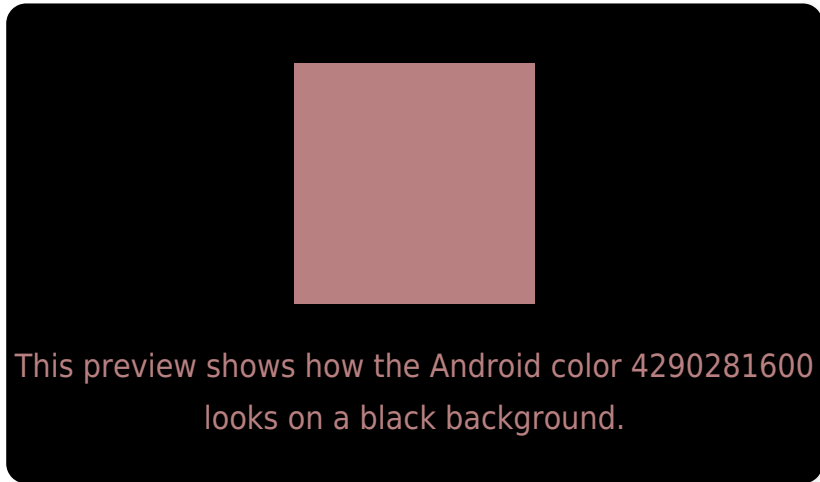
Large Text (above 18pt) WCAG AA ✓ Pass

Any Text WCAG AA ✗ Fail

Large Text (above 18pt) WCAG AAA ✗ Fail

Any Text WCAG AAA ✗ Fail

Black Background



Color Contrast Check

Large Text (above 18pt) WCAG AA ✓ Pass

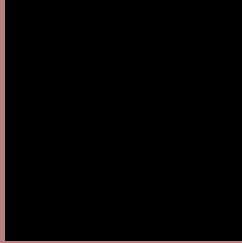
Any Text WCAG AA ✓ Pass

Large Text (above 18pt) WCAG AAA ✓ Pass

Any Text WCAG AAA × Fail

If you want to check with other color combinations, try the [Color Contrast Checker](#).

Android 4290281600 Background



This preview shows how black text looks on a background with the Android color 4290281600.



This preview shows how white text looks on a background with the Android color 4290281600.

Color Blindness Simulation

Color vision deficiency is a very complex topic, and I could not describe the different causes any better than Wikipedia does, so if you want to learn more, you should check out their [article about color blindness](#).

Dichromacy



Trichromacy



Original Color
4290281600

Protanomaly
4288711045

Deuteranomaly
4289365631

Tritanomaly
4290346885

Monochromacy



Original Color
4290281600

Achromatopsia
4287730065

Achromatomaly
4288646027

CSS Examples

Text

The CSS property to change the color of the text to Android 4290281600 is called "color". The color property can be set on classes, ids or directly on the HTML element.

This example shows how text in the color `rgb(184, 128, 128)` looks like.

```
.text, #text, p{  
    color:rgb(184, 128, 128)  
}
```

If you want to add a text shadow in that color use the text-shadow property, you can generate a text shadow directly with our [CSS Text Shadow Generator](#).

Here you see how black text with a 4 pixel rgb(184, 128, 128) colored shadow looks like.

```
.shadow{ text-shadow: 4px 4px 2px rgb(184, 128, 128) }
```

Border

The CSS property to change the border of an element to Android 4290281600 is called "border". The border property can be set on classes, ids or directly on the HTML element.

This example shows the color as border, it can be applied via the CSS property "border" or "border-color".

```
.border, #border, table{ border:4px solid rgb(184, 128, 128) }
```

If only the border color should be changed use the property `border-color`.

```
.border{ border-color:rgb(184, 128, 128) }
```

If you want to add a box shadow in that color use:

Here you see how a box with a 4 pixel `rgb(184, 128, 128)` colored shadow looks like.

```
.boxshadow{ -moz-box-shadow:4px 4px 4px  
4px rgb(184, 128, 128); -webkit-box-  
shadow:4px 4px 4px 4px rgb(184, 128, 128);  
box-shadow:4px 4px 4px 4px rgb(184, 128,  
128) }
```

Background

The CSS property to change the background color of an element to Android 4290281600 is called "background". The background property can be set on classes, ids or directly on the HTML element.

```
.background, #background, body{  
background: rgb(184, 128, 128) }
```

If only the background color should be changed can be used:

```
.background{ background-color: rgb(184,  
128, 128) }
```

This example shows the color as background, it is applied via the CSS property "background".

To optimize and compress your CSS code, you can use our [online CSS compressor and optimizer](#) based on csstidy. If you want to create a linear or radial gradient as background or border, check our [CSS Gradient Generator](#).

Hey! You found this booklet interesting? Support Converting Colors with the new Membership Option!

The pro membership hides all ads, plus gives you double the colors in the color bucket, and more awesome pro features!

[Learn more, Memberships starting at \\$2.50/m!](#)

**Follow me
on Twitter!**

@ConvertingColor