

Converting Colors

Android(4290282330)

Have a look what the booklet for
Android(4290282330) contains.

Android(4290282330)	3
<i>Conversions</i>	4
<i>Details</i>	6
<i>Harmonies</i>	11
<i>Previews</i>	23
<i>Color Blindness Simulation</i>	26
<i>CSS Examples</i>	29

Color

Android(4290282330)

Conversions

Conversions Part 1

Format	Color
Hex	B8835A
RGB	184, 131, 90
RGB Percent	72%, 51%, 35%
CMY	0.2784, 0.4863, 0.6471
CMYK	0.00, 0.29, 0.51, 0.28
HSL	26°, 40%, 54%
HSV	26°, 51%, 72%
XYZ	29.7289, 27.1611, 13.3486
YIQ	142.1730, 44.7490, -1.5150

Conversions

Conversions Part 2

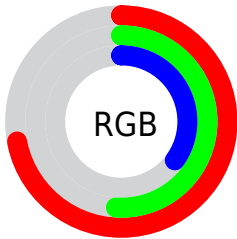
Format	Color
RYB	184, 163, 90
Decimal	12092250
CIELab	59.12, 15.60, 30.17
CIELCh	59, 33.961, 62.661
Yxy	27.1611, 0.4233, 0.3867
Android (android.graphics.Color)	4290282330 (0xFFB8835A)
YUV	142.1730, -25.7213, 36.6823
Hunter-Lab	52.1163, 10.6188, 21.2954

Details

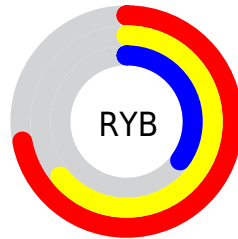
The Android color **4290282330** is a dark color, and the websafe version is hex **CC9966**. A complement of this color would be **4284125112**, and the grayscale version is **4287532686**.

A 20% lighter version of the original color is **4294097037**, and **4286599467** is the 20% darker color. If you saturate the color by 10%, you get **4290279752**, and if you desaturate by 10%, it is **4290284908**.

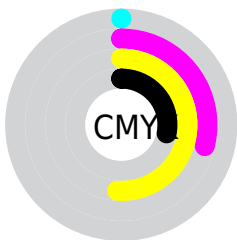
Distribution



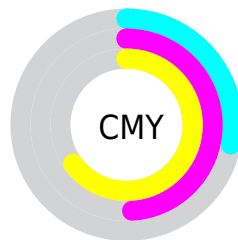
- Red (72%)
- Green (51%)
- Blue (35%)



- Red (72%)
- Yellow (64%)
- Blue (35%)



- Cyan (0%)
- Magenta (29%)
- Yellow (51%)
- Black (28%)



- Cyan (28%)
- Magenta (49%)
- Yellow (65%)

Brightness & Saturation Gradients

These gradients show how the Android color 4290282330 changes by changing the brightness by 10 percent. The first figure shows a shift by +10% for each color and the second figure -10%.

Similar to the brightness gradients but the following saturation gradients show a change of the Android color 4290282330 by changing the saturation by 10% instead.



4290282330



4290282330

4294967295



4288440898



4294097037



4286599467



4294956199



4284824085



4294963395



4283114496



4294967263



4281405440



4294967291



4279762945



4278190080



4290282330



4290282330



4290279752



4290284908

4290276917

4290287743

4290274339

4290290321

4290271760

4290292900

4290269184

4290295734

4290298312

4290301147

4290303725

4290306303

Harmonies

Analogous

The Analogous color harmony consists of three colors that are next to each other on the color wheel.



4291197552



4290282330



4288646482

Triad

The Triadic color harmony groups three colors that are evenly spaced from another and form a triangle on the color wheel.



4290282330



4281376400



4287989441

Complementary

The Complementary color scheme is a pair of colors which are on the opposite of each other on the color wheel.



4290282330



4284125112

Split Complementary

Split-complementary colors differ from the complementary color scheme. The scheme consists of three colors, the original color and two neighbors of the complement color.



4284977354



4290282330



4278230445

Square

The Square scheme is like the rectangle color scheme, but the four colors are evenly spaced on the color wheel.



4290282330



4284259442



4281244099



4290149546

Rectangle

The Rectangle color scheme consists of four colors that form a rectangle on the color wheel.



4290282330



4287337302



4281244099



4287072709

Sweetspot

The Sweet Spot groups the original color and five complimentary colors.



4290282330



4293974988



4290271887



4286082146



4294440951



4286085240

Same Dimension

The Same Dimension uses a secret algorithm to generate beautiful new colors.



4290282330



4293959005



4290294362



4284241747



4288431104



4280028160

Inverse Universe

The Inverse Universe completely reimagines the original color for something new.



4284125112



4284330224



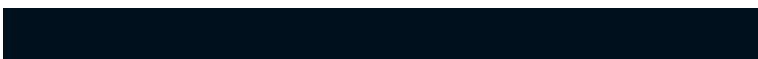
4284113080



4283652188



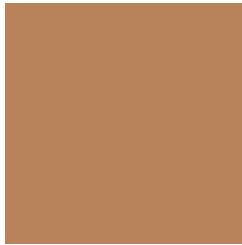
4278212764



4278194204

Previews

White Background



This preview shows how the Android color 4290282330 looks on a white background.

Color Contrast Check

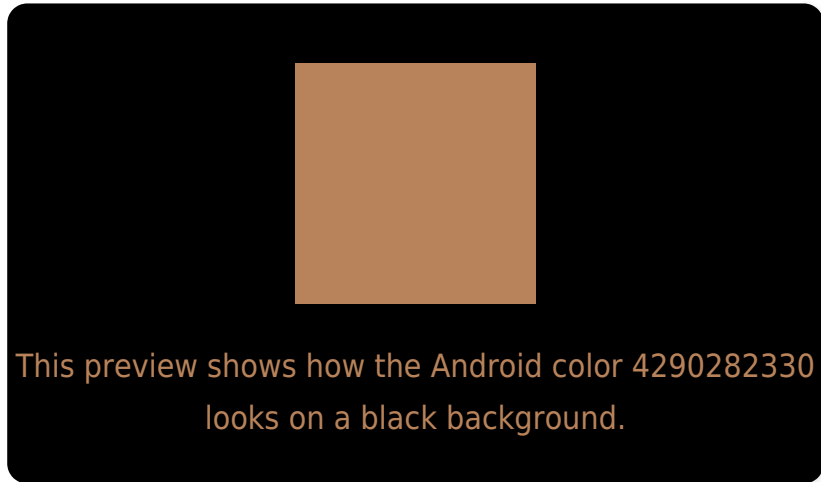
Large Text (above 18pt) WCAG AA ✓ Pass

Any Text WCAG AA ✗ Fail

Large Text (above 18pt) WCAG AAA ✗ Fail

Any Text WCAG AAA ✗ Fail

Black Background



Color Contrast Check

Large Text (above 18pt) WCAG AA ✓ Pass

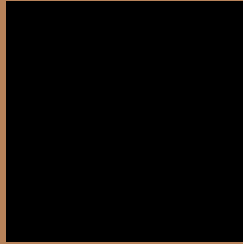
Any Text WCAG AA ✓ Pass

Large Text (above 18pt) WCAG AAA ✓ Pass

Any Text WCAG AAA × Fail

If you want to check with other color combinations, try the [Color Contrast Checker](#).

Android 4290282330 Background



This preview shows how black text looks on a background with the Android color 4290282330.



This preview shows how white text looks on a background with the Android color 4290282330.

Color Blindness Simulation

Color vision deficiency is a very complex topic, and I could not describe the different causes any better than Wikipedia does, so if you want to learn more, you should check out their [article about color blindness](#).

Dichromacy



Original Color
4290282330

Protanopia
4288384863

Deuteranopia
4289497177

Trichromacy



Original Color
4290282330

Protanomaly
4289104733

Deuteranomaly
4289758809

Tritanomaly
4290477943

Monochromacy



Original Color
4290282330

Achromatopsia
4287532686

Achromatomaly
4288514683

CSS Examples

Text

The CSS property to change the color of the text to Android 4290282330 is called "color". The color property can be set on classes, ids or directly on the HTML element.

This example shows how text in the color `rgb(184, 131, 90)` looks like.

```
.text, #text, p{  
    color:rgb(184, 131, 90)  
}
```

If you want to add a text shadow in that color use the text-shadow property, you can generate a text shadow directly with our [CSS Text Shadow Generator](#).

Here you see how black text with a 4 pixel rgb(184, 131, 90) colored shadow looks like.

```
.shadow{ text-shadow: 4px 4px 2px rgb(184, 131, 90) }
```

Border

The CSS property to change the border of an element to Android 4290282330 is called "border". The border property can be set on classes, ids or directly on the HTML element.

This example shows the color as border, it can be applied via the CSS property "border" or "border-color".

```
.border, #border, table{ border:4px solid rgb(184, 131, 90) }
```

If only the border color should be changed use the property `border-color`.

```
.border{ border-color:rgb(184, 131, 90) }
```

If you want to add a box shadow in that color use:

Here you see how a box with a 4 pixel `rgb(184, 131, 90)` colored shadow looks like.

```
.boxshadow{ -moz-box-shadow:4px 4px 4px  
4px rgb(184, 131, 90); -webkit-box-  
shadow:4px 4px 4px 4px rgb(184, 131, 90);  
box-shadow:4px 4px 4px 4px rgb(184, 131,  
90) }
```

Background

The CSS property to change the background color of an element to Android 4290282330 is called "background". The background property can be set on classes, ids or directly on the HTML element.

```
.background, #background, body{  
background: rgb(184, 131, 90) }
```

If only the background color should be changed can be used:

```
.background{ background-color: rgb(184,  
131, 90) }
```

This example shows the color as background, it is applied via the CSS property "background".

To optimize and compress your CSS code, you can use our [online CSS compressor and optimizer](#) based on csstidy. If you want to create a linear or radial gradient as background or border, check our [CSS Gradient Generator](#).

Hey! You found this booklet interesting? Support Converting Colors with the new Membership Option!

The pro membership hides all ads, plus gives you double the colors in the color bucket, and more awesome pro features!

[Learn more, Memberships starting at \\$2.50/m!](#)

**Follow me
on Twitter!**

@ConvertingColor