

# Converting Colors

Android(4290283408)

Have a look what the booklet for  
Android(4290283408) contains.

<b>Android(4290283408)</b> .....	3
<b><i>Conversions</i></b> .....	4
<b><i>Details</i></b> .....	6
<b><i>Harmonies</i></b> .....	11
<b><i>Previews</i></b> .....	23
<b><i>Color Blindness Simulation</i></b> .....	26
<b><i>CSS Examples</i></b> .....	29

# **Color**

**Android(4290283408)**

# Conversions

## Conversions Part 1

Format	Color
Hex	B88790
RGB	184, 135, 144
RGB Percent	72%, 53%, 56%
CMY	0.2784, 0.4706, 0.4353
CMYK	0.00, 0.27, 0.22, 0.28
HSL	349°, 26%, 63%
HSV	349°, 27%, 72%
XYZ	33.4652, 29.5319, 30.3220
YIQ	150.6770, 26.3150, 13.1870

# Conversions

## Conversions Part 2

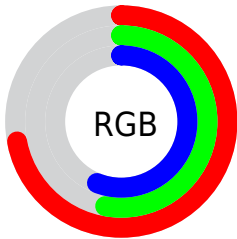
<b>Format</b>	<b>Color</b>
<b>RYB</b>	184, 135, 144
Decimal	12093328
CIELab	61.25, 20.10, 2.58
CIELCh	61, 20.264, 7.317
Yxy	29.5319, 0.3586, 0.3165
Android (android.graphics.Color)	4290283408 (0xFFB88790)
YUV	150.6770, -3.2918, 29.2243
Hunter-Lab	54.3433, 14.8215, 4.9582

# Details

The Android color `4290283408` is a light color, and the websafe version is hex `CC9999`. A complement of this color would be `4287084719`, and the grayscale version is `4288124823`.

A 20% lighter version of the original color is `4294032838`, and `4286731614` is the 20% darker color. If you saturate the color by 10%, you get `4290278785`, and if you desaturate by 10%, it is `4290288031`.

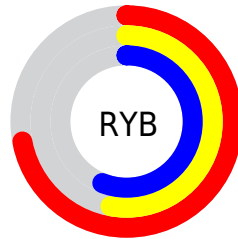
# Distribution



Red (72%)

Green (53%)

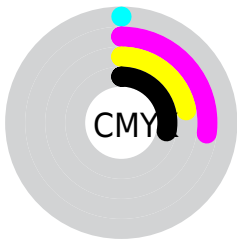
Blue (56%)



Red (72%)

Yellow (53%)

Blue (56%)

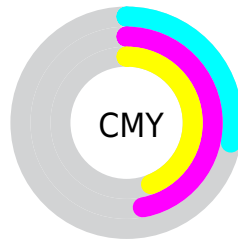


Cyan (0%)

Magenta (27%)

Yellow (22%)

Black (28%)



Cyan (28%)

Magenta (47%)

Yellow (44%)

# Brightness & Saturation Gradients

These gradients show how the Android color 4290283408 changes by changing the brightness by 10 percent. The first figure shows a shift by +10% for each color and the second figure -10%.

Similar to the brightness gradients but the following saturation gradients show a change of the Android color 4290283408 by changing the saturation by 10% instead.



 4290283408

 4290283408

4294967295

 4288507254

 4294032838

 4286731614

 4294957282

 4285021510

 4294964734

 4283377456

 4281798939

 4280549376

 4278190080

 4290283408

 4290283408

 4290278785

 4290288031

 4290273906

 4290292910

 4290269283

 4290297533

 4290264404

 4290302412

 4290259781

 4290307035

 4290255158

 4290311658

 4290250279

 4290314233

 4290248738

 4290314239

# Harmonies

## Analogous

The Analogous color harmony consists of three colors that are next to each other on the color wheel.



4289694114



4290283408



4290218367

# Triad

The Triadic color harmony groups three colors that are evenly spaced from another and form a triangle on the color wheel.



4290283408



4287207799



4285438388

# Complementary

The Complementary color scheme is a pair of colors which are on the opposite of each other on the color wheel.



4290283408



4287084719

# Split Complementary

Split-complementary colors differ from the complementary color scheme. The scheme consists of three colors, the original color and two neighbors of the complement color.



4284652969



4290283408



4285898117

# Square

The Square scheme is like the rectangle color scheme, but the four colors are evenly spaced on the color wheel.



4290283408



4288517232



4284849816



4286878903

# Rectangle

The Rectangle color scheme consists of four colors that form a rectangle on the color wheel.



4290283408



4289825910



4284849816



4285045681



# Sweetspot

The Sweet Spot groups the original color and five complimentary colors.



4290283408



4293975520



4289628088



4286082158



4294440951



4286085240



# Same Dimension

The Same Dimension uses a secret algorithm to generate beautiful new colors.



4290283408



4293960625



4290287239



4284240724



4288413725



4280025093



# Inverse Universe

The Inverse Universe completely reimagines the original color for something new.



4290283408



4293960625



4287080888



4284240724



4288413725

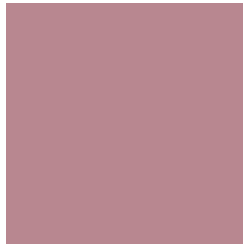


4280025093



# Previews

## White Background



This preview shows how the Android color 4290283408 looks on a white background.

## Color Contrast Check

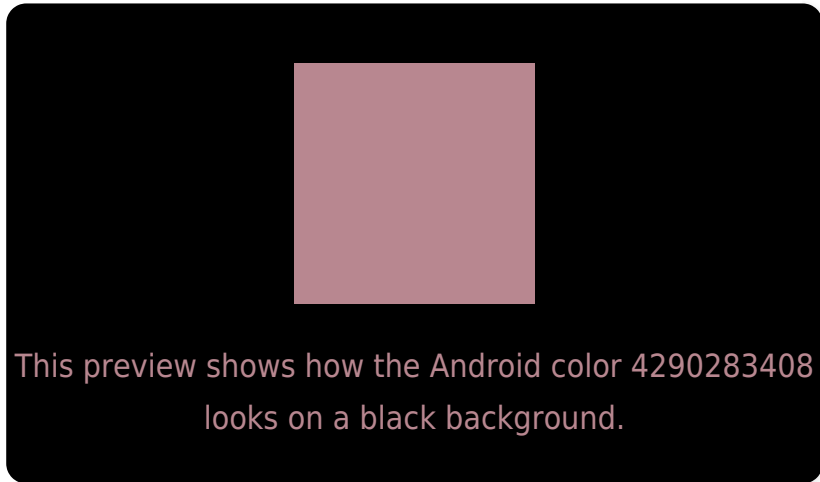
Large Text (above 18pt) WCAG AA ✓ Pass

Any Text WCAG AA ✗ Fail

Large Text (above 18pt) WCAG AAA ✗ Fail

Any Text WCAG AAA ✗ Fail

# Black Background



## Color Contrast Check

Large Text (above 18pt) WCAG AA ✓ Pass

Any Text WCAG AA ✓ Pass

Large Text (above 18pt) WCAG AAA ✓ Pass

Any Text WCAG AAA × Fail

If you want to check with other color combinations, try the [Color Contrast Checker](#).



# Android 4290283408 Background



This preview shows how black text looks on a background with the Android color 4290283408.



This preview shows how white text looks on a background with the Android color 4290283408.

# Color Blindness Simulation

Color vision deficiency is a very complex topic, and I could not describe the different causes any better than Wikipedia does, so if you want to learn more, you should check out their [article about color blindness](#).

## Dichromacy





# Trichromacy



**Original Color**  
4290283408

**Protanomaly**  
4288843668

**Deuteranomaly**  
4289498255

**Tritanomaly**  
4290283409

# Monochromacy



**Original Color**  
4290283408

**Achromatopsia**  
4288124823

**Achromatomaly**  
4288909716

# CSS Examples

## Text

The CSS property to change the color of the text to Android 4290283408 is called "color". The color property can be set on classes, ids or directly on the HTML element.

This example shows how text in the color `rgb(184, 135, 144)` looks like.

```
.text, #text, p{  
    color:rgb(184, 135, 144)  
}
```

If you want to add a text shadow in that color use the text-shadow property, you can generate a text shadow directly with our [CSS Text Shadow Generator](#).

Here you see how black text with a 4 pixel rgb(184, 135, 144) colored shadow looks like.

```
.shadow{ text-shadow: 4px 4px 2px rgb(184, 135, 144) }
```

## Border

The CSS property to change the border of an element to Android 4290283408 is called "border". The border property can be set on classes, ids or directly on the HTML element.

This example shows the color as border, it can be applied via the CSS property "border" or "border-color".

```
.border, #border, table{ border:4px solid rgb(184, 135, 144) }
```

If only the border color should be changed use the property `border-color`.

```
.border{ border-color:rgb(184, 135, 144) }
```

If you want to add a box shadow in that color use:

Here you see how a box with a 4 pixel `rgb(184, 135, 144)` colored shadow looks like.

```
.boxshadow{ -moz-box-shadow:4px 4px 4px  
4px rgb(184, 135, 144); -webkit-box-  
shadow:4px 4px 4px 4px rgb(184, 135, 144);  
box-shadow:4px 4px 4px 4px rgb(184, 135,  
144) }
```

# Background

The CSS property to change the background color of an element to Android 4290283408 is called "background". The background property can be set on classes, ids or directly on the HTML element.

```
.background, #background, body{  
background: rgb(184, 135, 144) }
```

If only the background color should be changed can be used:

```
.background{ background-color: rgb(184,  
135, 144) }
```

This example shows the color as background, it is applied via the CSS property "background".

To optimize and compress your CSS code, you can use our [online CSS compressor and optimizer](#) based on csstidy. If you want to create a linear or radial gradient as background or border, check our [CSS Gradient Generator](#).



Hey! You found this booklet interesting? Support Converting Colors with the new Membership Option!

The pro membership hides all ads, plus gives you double the colors in the color bucket, and more awesome pro features!

**[Learn more, Memberships starting at \\$2.50/m!](#)**

**Follow me  
on Twitter!**

@ConvertingColor