

# Converting Colors

Android(4290285155)

Have a look what the booklet for  
Android(4290285155) contains.

<b>Android(4290285155)</b> .....	3
<b><i>Conversions</i></b> .....	4
<b><i>Details</i></b> .....	6
<b><i>Harmonies</i></b> .....	11
<b><i>Previews</i></b> .....	23
<b><i>Color Blindness Simulation</i></b> .....	26
<b><i>CSS Examples</i></b> .....	29

# **Color**

**Android(4290285155)**

# Conversions

## Conversions Part 1

Format	Color
Hex	<a href="#">B88E63</a>
RGB	<a href="#">184, 142, 99</a>
RGB Percent	<a href="#">72%, 56%, 39%</a>
CMY	<a href="#">0.2784, 0.4431, 0.6118</a>
CMYK	<a href="#">0.00, 0.23, 0.46, 0.28</a>
HSL	<a href="#">30°, 37%, 55%</a>
HSV	<a href="#">30°, 46%, 72%</a>
XYZ	<a href="#">31.6923, 30.4372, 16.0090</a>
YIQ	<a href="#">149.6560, 38.8350, -4.4690</a>

# Conversions

## Conversions Part 2

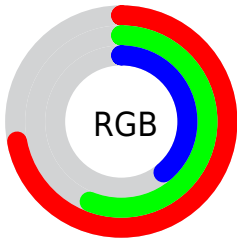
Format	Color
<a href="#">RYB</a>	<a href="#">182, 184, 99</a>
Decimal	<a href="#">12095075</a>
CIELab	<a href="#">62.03, 10.38, 28.97</a>
CIELCh	<a href="#">62, 30.778, 70.286</a>
Yxy	<a href="#">30.4372, 0.4056, 0.3895</a>
Android (android.graphics.Color)	<a href="#">4290285155</a> ( <a href="#">0xFFB88E63</a> )
YUV	<a href="#">149.6560, -24.9734, 30.1197</a>
Hunter-Lab	<a href="#">55.1699, 5.9918, 21.4144</a>

# Details

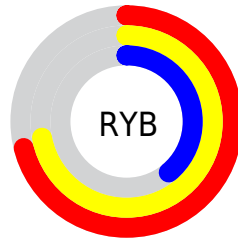
The Android color **4290285155** is a dark color, and the websafe version is hex **CC9966**. A complement of this color would be **4284714424**, and the grayscale version is **4288059030**.

A 20% lighter version of the original color is **4294100118**, and **4286667827** is the 20% darker color. If you saturate the color by 10%, you get **4290282833**, and if you desaturate by 10%, it is **4290287477**.

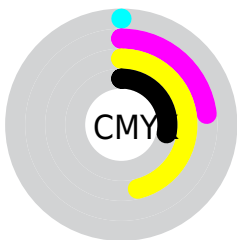
# Distribution



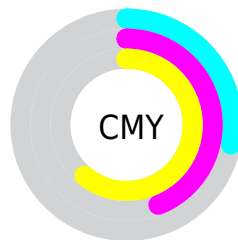
- Red (72%)
- Green (56%)
- Blue (39%)



- Red (71%)
- Yellow (72%)
- Blue (39%)



- Cyan (0%)
- Magenta (23%)
- Yellow (46%)
- Black (28%)



- Cyan (28%)
- Magenta (44%)
- Yellow (61%)

# Brightness & Saturation Gradients

These gradients show how the Android color 4290285155 changes by changing the brightness by 10 percent. The first figure shows a shift by +10% for each color and the second figure -10%.

Similar to the brightness gradients but the following saturation gradients show a change of the Android color 4290285155 by changing the saturation by 10% instead.





4290285155



4290285155

4294967295



4288443467



4294100118



4286667827



4294959281



4284892189



4294966477



4283182598



4294967273



4281604352



4280025088



4278190080



4290285155



4290285155



4290282833



4290287477

 4290280510

 4290289800

 4290278188

 4290292122

 4290275865

 4290294445

 4290273543

 4290296767

 4290272512

 4290299345

 4290301668

 4290303990

 4290306303

# Harmonies

## Analogous

The Analogous color harmony consists of three colors that are next to each other on the color wheel.



4291331444



4290285155



4288649056

# Triad

The Triadic color harmony groups three colors that are evenly spaced from another and form a triangle on the color wheel.



4290285155



4282492319



4289039296

# Complementary

The Complementary color scheme is a pair of colors which are on the opposite of each other on the color wheel.



4290285155



4284714424

# Split Complementary

Split-complementary colors differ from the complementary color scheme. The scheme consists of three colors, the original color and two neighbors of the complement color.



4286551499



4290285155



4281770936

# Square

The Square scheme is like the rectangle color scheme, but the four colors are evenly spaced on the color wheel.



4290285155



4284523395



4283735753



4290806953

# Rectangle

The Rectangle color scheme consists of four colors that form a rectangle on the color wheel.



4290285155



4287405158



4283735753



4288319429



# Sweetspot

The Sweet Spot groups the original color and five complimentary colors.



4290285155



4293976014



4290274190



4286082659



4294440951



4286085240



# Same Dimension

The Same Dimension uses a secret algorithm to generate beautiful new colors.



4290285155



4293963628



4290295907



4284241747



4288433920



4280028672



# Inverse Universe

The Inverse Universe completely reimagines the original color for something new.



4284714424



4285312496



4284703672



4283651932



4278209948

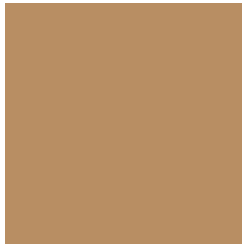


4278193692



# Previews

## White Background



This preview shows how the Android color 4290285155 looks on a white background.

## Color Contrast Check

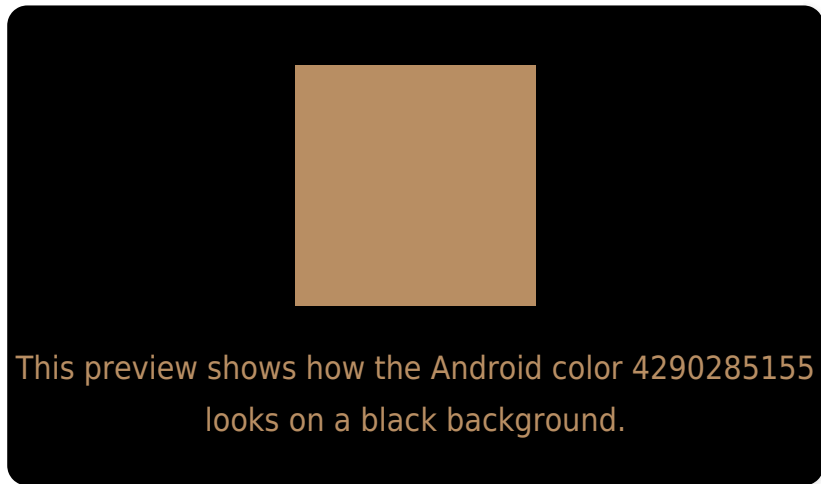
Large Text (above 18pt) WCAG AA × Fail

Any Text WCAG AA × Fail

Large Text (above 18pt) WCAG AAA × Fail

Any Text WCAG AAA × Fail

# Black Background



## Color Contrast Check

Large Text (above 18pt) WCAG AA ✓ Pass

Any Text WCAG AA ✓ Pass

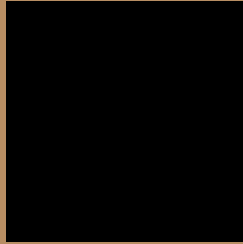
Large Text (above 18pt) WCAG AAA ✓ Pass

Any Text WCAG AAA ✓ Pass

If you want to check with other color combinations, try the [Color Contrast Checker](#).



# Android 4290285155 Background



This preview shows how black text looks on a background with the Android color 4290285155.



This preview shows how white text looks on a background with the Android color 4290285155.

# Color Blindness Simulation

Color vision deficiency is a very complex topic, and I could not describe the different causes any better than Wikipedia does, so if you want to learn more, you should check out their [article about color blindness](#).

## Dichromacy



**Original Color**  
4290285155

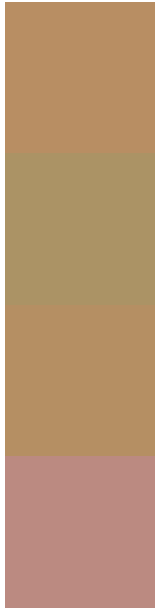
**Protanopia**  
4288910950

**Deuteranopia**  
4290023523



**Tritanopia**  
4290545810

# Trichromacy



**Original Color**  
4290285155

**Protanomaly**  
4289434469

**Deuteranomaly**  
4290088803

**Tritanomaly**  
4290480769

# Monochromacy



**Original Color**  
4290285155

**Achromatopsia**  
4288059030

**Achromatomaly**  
4288844675

# CSS Examples

## Text

The CSS property to change the color of the text to Android 4290285155 is called "color". The color property can be set on classes, ids or directly on the HTML element.

This example shows how text in the color `rgb(184, 142, 99)` looks like.

```
.text, #text, p{  
    color:rgb(184, 142, 99)  
}
```

If you want to add a text shadow in that color use the text-shadow property, you can generate a text shadow directly with our [CSS Text Shadow Generator](#).

Here you see how black text with a 4 pixel rgb(184, 142, 99) colored shadow looks like.

```
.shadow{ text-shadow: 4px 4px 2px rgb(184, 142, 99) }
```

## Border

The CSS property to change the border of an element to Android 4290285155 is called "border". The border property can be set on classes, ids or directly on the HTML element.

This example shows the color as border, it can be applied via the CSS property "border" or "border-color".

```
.border, #border, table{ border:4px solid rgb(184, 142, 99) }
```

If only the border color should be changed use the property border-color.

```
.border{ border-color:rgb(184, 142, 99) }
```

If you want to add a box shadow in that color use:

Here you see how a box with a 4 pixel rgb(184, 142, 99) colored shadow looks like.

```
.boxshadow{ -moz-box-shadow:4px 4px 4px  
4px rgb(184, 142, 99); -webkit-box-  
shadow:4px 4px 4px 4px rgb(184, 142, 99);  
box-shadow:4px 4px 4px 4px rgb(184, 142,  
99) }
```

# Background

The CSS property to change the background color of an element to Android 4290285155 is called "background". The background property can be set on classes, ids or directly on the HTML element.

```
.background, #background, body{  
background: rgb(184, 142, 99) }
```

If only the background color should be changed can be used:

```
.background{ background-color: rgb(184,  
142, 99) }
```

This example shows the color as background, it is applied via the CSS property "background".

To optimize and compress your CSS code, you can use our [online CSS compressor and optimizer](#) based on csstidy. If you want to create a linear or radial gradient as background or border, check our [CSS Gradient Generator](#).



Hey! You found this booklet interesting? Support Converting Colors with the new Membership Option!

The pro membership hides all ads, plus gives you double the colors in the color bucket, and more awesome pro features!

**[Learn more, Memberships starting at \\$2.50/m!](#)**

**Follow me  
on Twitter!**

@ConvertingColor