

Converting Colors

Android(4290285455)

Have a look what the booklet for
Android(4290285455) contains.

Android(4290285455)	3
<i>Conversions</i>	4
<i>Details</i>	6
<i>Harmonies</i>	11
<i>Previews</i>	23
<i>Color Blindness Simulation</i>	26
<i>CSS Examples</i>	29

Color

Android(4290285455)

Conversions

Conversions Part 1

Format	Color
Hex	B88F8F
RGB	184, 143, 143
RGB Percent	72%, 56%, 56%
CMY	0.2784, 0.4392, 0.4392
CMYK	0.00, 0.22, 0.22, 0.28
HSL	0°, 22%, 64%
HSV	0°, 22%, 72%
XYZ	34.5476, 31.8184, 30.3073
YIQ	155.2590, 24.4360, 8.6920

Conversions

Conversions Part 2

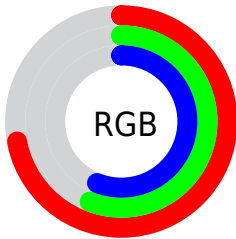
Format	Color
R_{YB}	184, 143, 143
Decimal	12095375
CIE Lab	63.19, 15.48, 5.95
CIE LCh	63, 16.589, 21.033
Yxy	31.8184, 0.3574, 0.3291
Android (android.graphics.Color)	4290285455 (0xFFB88F8F)
YUV	155.2590, -6.0437, 25.2059
Hunter-Lab	56.4078, 10.6104, 7.6296

Details

The Android color `4290285455` is a light color, and the websafe version is hex `CC9999`. A complement of this color would be `4287609016`, and the grayscale version is `4288387995`.

A 20% lighter version of the original color is `4294034885`, and `4286733405` is the 20% darker color. If you saturate the color by 10%, you get `4290280829`, and if you desaturate by 10%, it is `4290290081`.

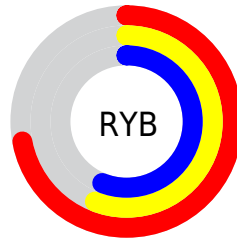
Distribution



Red (72%)

Green (56%)

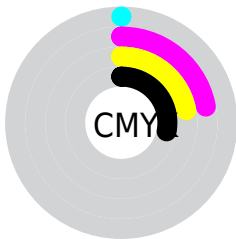
Blue (56%)



Red (72%)

Yellow (56%)

Blue (56%)

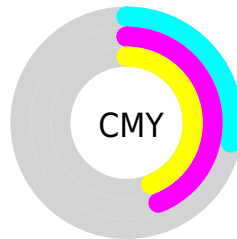


Cyan (0%)

Magenta (22%)

Yellow (22%)

Black (28%)



Cyan (28%)

Magenta (44%)

Yellow (44%)

Brightness & Saturation Gradients

These gradients show how the Android color 4290285455 changes by changing the brightness by 10 percent. The first figure shows a shift by +10% for each color and the second figure -10%.

Similar to the brightness gradients but the following saturation gradients show a change of the Android color 4290285455 by changing the saturation by 10% instead.



4290285455



4290285455

4294967295



4288509301



4294034885



4286733405



4294959585



4285023557

4294967037



4283444783



4281866522



4280549376



4278190080



4290285455



4290285455



4290280829



4290290081

 4290275946

 4290294964

 4290271320

 4290299590

 4290266437

 4290304473

 4290261811

 4290309099

 4290257185

 4290313725

 4290252302

 4290314239

 4290248704

Harmonies

Analogous

The Analogous color harmony consists of three colors that are next to each other on the color wheel.



4290023326



4290285455



4290024067

Triad

The Triadic color harmony groups three colors that are evenly spaced from another and form a triangle on the color wheel.



4290285455



4287143814



4286815414

Complementary

The Complementary color scheme is a pair of colors which are on the opposite of each other on the color wheel.



4290285455



4287609016

Split Complementary

Split-complementary colors differ from the complementary color scheme. The scheme consists of three colors, the original color and two neighbors of the complement color.



4285898671



4290285455



4286226836

Square

The Square scheme is like the rectangle color scheme, but the four colors are evenly spaced on the color wheel.



4290285455



4288256893



4285702563



4288059316

Rectangle

The Rectangle color scheme consists of four colors that form a rectangle on the color wheel.



4290285455



4289566077



4285702563



4286422452

Sweetspot

The Sweet Spot groups the original color and five complimentary colors.



4290285455



4293976031



4290285496



4286082670



4294440951



4286085240

Same Dimension

The Same Dimension uses a secret algorithm to generate beautiful new colors.



4290285455



4293963695



4290290575



4284240723



4288413696



4280025088

Inverse Universe

The Inverse Universe completely reimagines the original color for something new.



4287609016



4289720560



4287603640



4283653212



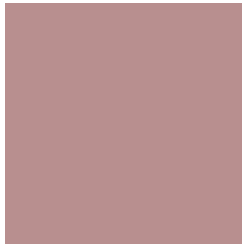
4278230172



4278197276

Previews

White Background



This preview shows how the Android color 4290285455 looks on a white background.

Color Contrast Check

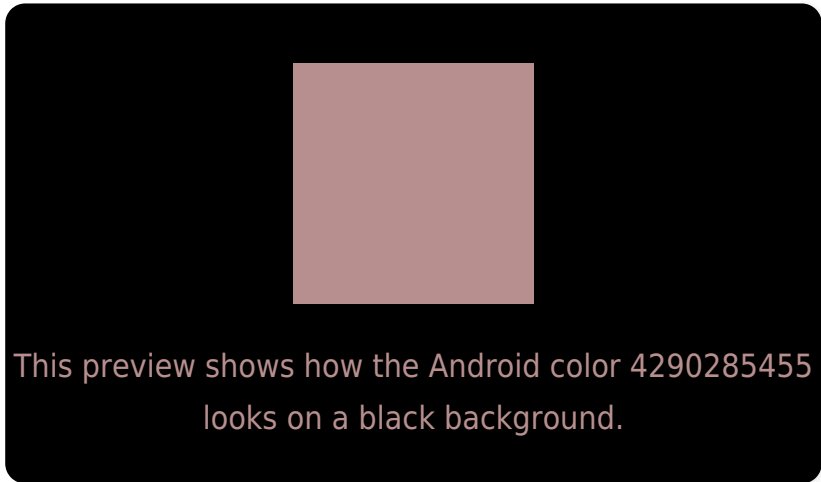
Large Text (above 18pt) WCAG AA × Fail

Any Text WCAG AA × Fail

Large Text (above 18pt) WCAG AAA × Fail

Any Text WCAG AAA × Fail

Black Background



Color Contrast Check

Large Text (above 18pt) WCAG AA ✓ Pass

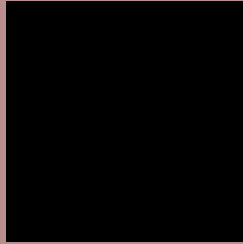
Any Text WCAG AA ✓ Pass

Large Text (above 18pt) WCAG AAA ✓ Pass

Any Text WCAG AAA ✓ Pass

If you want to check with other color combinations, try the [Color Contrast Checker](#).

Android 4290285455 Background



This preview shows how black text looks on a background with the Android color 4290285455.



This preview shows how white text looks on a background with the Android color 4290285455.

Color Blindness Simulation

Color vision deficiency is a very complex topic, and I could not describe the different causes any better than Wikipedia does, so if you want to learn more, you should check out their [article about color blindness](#).

Dichromacy



Original Color
4290285455

Protanopia
4288518548

Deuteranopia
4289500302



Tritanopia
4290350744

Trichromacy



Original Color
4290285455

Protanomaly
4289172882

Deuteranomaly
4289761934

Tritanomaly
4290350741

Monochromacy



Original Color
4290285455

Achromatopsia
4288387995

Achromatomaly
4289107863

CSS Examples

Text

The CSS property to change the color of the text to Android 4290285455 is called "color". The color property can be set on classes, ids or directly on the HTML element.

This example shows how text in the color `rgb(184, 143, 143)` looks like.

```
.text, #text, p{  
    color:rgb(184, 143, 143)  
}
```

If you want to add a text shadow in that color use the text-shadow property, you can generate a text shadow directly with our [CSS Text Shadow Generator](#).

Here you see how black text with a 4 pixel rgb(184, 143, 143) colored shadow looks like.

```
.shadow{ text-shadow: 4px 4px 2px rgb(184, 143, 143) }
```

Border

The CSS property to change the border of an element to Android 4290285455 is called "border". The border property can be set on classes, ids or directly on the HTML element.

This example shows the color as border, it can be applied via the CSS property "border" or "border-color".

```
.border, #border, table{ border:4px solid rgb(184, 143, 143) }
```

If only the border color should be changed use the property `border-color`.

```
.border{ border-color:rgb(184, 143, 143) }
```

If you want to add a box shadow in that color use:

Here you see how a box with a 4 pixel `rgb(184, 143, 143)` colored shadow looks like.

```
.boxshadow{ -moz-box-shadow:4px 4px 4px  
4px rgb(184, 143, 143); -webkit-box-  
shadow:4px 4px 4px 4px rgb(184, 143, 143);  
box-shadow:4px 4px 4px 4px rgb(184, 143,  
143) }
```

Background

The CSS property to change the background color of an element to Android 4290285455 is called "background". The background property can be set on classes, ids or directly on the HTML element.

```
.background, #background, body{  
background: rgb(184, 143, 143) }
```

If only the background color should be changed can be used:

```
.background{ background-color: rgb(184,  
143, 143) }
```

This example shows the color as background, it is applied via the CSS property "background".

To optimize and compress your CSS code, you can use our [online CSS compressor and optimizer](#) based on csstidy. If you want to create a linear or radial gradient as background or border, check our [CSS Gradient Generator](#).

Hey! You found this booklet interesting? Support Converting Colors with the new Membership Option!

The pro membership hides all ads, plus gives you double the colors in the color bucket, and more awesome pro features!

[Learn more, Memberships starting at \\$2.50/m!](#)

**Follow me
on Twitter!**

@ConvertingColor