

Converting Colors

Android(4290285713)

Have a look what the booklet for
Android(4290285713) contains.

Android(4290285713)	3
<i>Conversions</i>	4
<i>Details</i>	6
<i>Harmonies</i>	11
<i>Previews</i>	23
<i>Color Blindness Simulation</i>	26
<i>CSS Examples</i>	29

Color

Android(4290285713)

Conversions

Conversions Part 1

Format	Color
Hex	B89091
RGB	184, 144, 145
RGB Percent	72%, 56%, 57%
CMY	0.2784, 0.4353, 0.4314
CMYK	0.00, 0.22, 0.21, 0.28
HSL	358°, 22%, 64%
HSV	358°, 22%, 72%
XYZ	34.8513, 32.1812, 31.1628
YIQ	156.0740, 23.5190, 8.7910

Conversions

Conversions Part 2

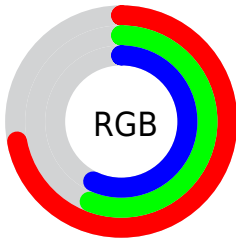
Format	Color
RYB	184, 144, 145
Decimal	12095633
CIELab	63.49, 15.23, 5.25
CIElCh	63, 16.115, 19.027
Yxy	32.1812, 0.3549, 0.3277
Android (android.graphics.Color)	4290285713 (0xFFB89091)
YUV	156.0740, -5.4595, 24.4911
Hunter-Lab	56.7285, 10.3870, 7.1400

Details

The Android color `4290285713` is a light color, and the websafe version is hex `CC9999`. A complement of this color would be `4287674551`, and the grayscale version is `4288453788`.

A 20% lighter version of the original color is `4294035143`, and `4286733663` is the 20% darker color. If you saturate the color by 10%, you get `4290281087`, and if you desaturate by 10%, it is `4290290339`.

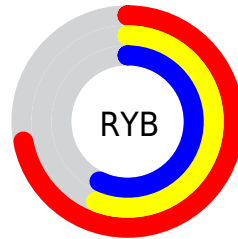
Distribution



Red (72%)

Green (56%)

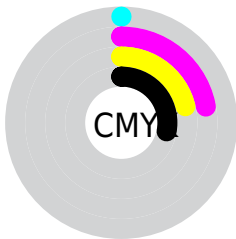
Blue (57%)



Red (72%)

Yellow (56%)

Blue (57%)

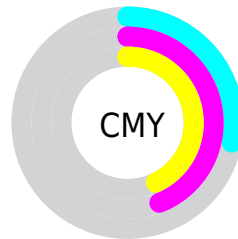


Cyan (0%)

Magenta (22%)

Yellow (21%)

Black (28%)



Cyan (28%)

Magenta (44%)

Yellow (43%)

Brightness & Saturation Gradients

These gradients show how the Android color 4290285713 changes by changing the brightness by 10 percent. The first figure shows a shift by +10% for each color and the second figure -10%.

Similar to the brightness gradients but the following saturation gradients show a change of the Android color 4290285713 by changing the saturation by 10% instead.

 4290285713

 4290285713

4294967295

 4288509559

 4294035143

 4286733663

 4294959843

 4285089351

 4283445041

 4281866780

 4280549377

 4278190080

 4290285713

 4290285713

 4290281087

 4290290339

 4290276205

 4290295221

 4290271579

 4290299847

 4290266697

 4290304729

 4290262071

 4290309355

 4290257445

 4290313981

 4290252563

 4290314239

 4290248709

Harmonies

Analogous

The Analogous color harmony consists of three colors that are next to each other on the color wheel.



4289958048



4290285713



4290024325

Triad

The Triadic color harmony groups three colors that are evenly spaced from another and form a triangle on the color wheel.



4290285713



4287340679



4286815670

Complementary

The Complementary color scheme is a pair of colors which are on the opposite of each other on the color wheel.



4290285713



4287674551

Split Complementary

Split-complementary colors differ from the complementary color scheme. The scheme consists of three colors, the original color and two neighbors of the complement color.



4285964463



4290285713



4286358164

Square

The Square scheme is like the rectangle color scheme, but the four colors are evenly spaced on the color wheel.



4290285713



4288388223



4285833891



4288059573

Rectangle

The Rectangle color scheme consists of four colors that form a rectangle on the color wheel.



4290285713



4289631615



4285833891



4286488244

Sweetspot

The Sweet Spot groups the original color and five complimentary colors.



4290285713



4293976031



4290220216



4286082671



4294440951



4286085240

Same Dimension

The Same Dimension uses a secret algorithm to generate beautiful new colors.



4290285713



4293964211



4290290576



4284240723



4288413700



4280025089

Inverse Universe

The Inverse Universe completely reimagines the original color for something new.



4290285713



4293964211



4287669688



4284240723



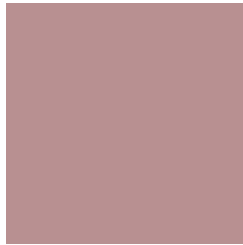
4288413700



4280025089

Previews

White Background



This preview shows how the Android color 4290285713 looks on a white background.

Color Contrast Check

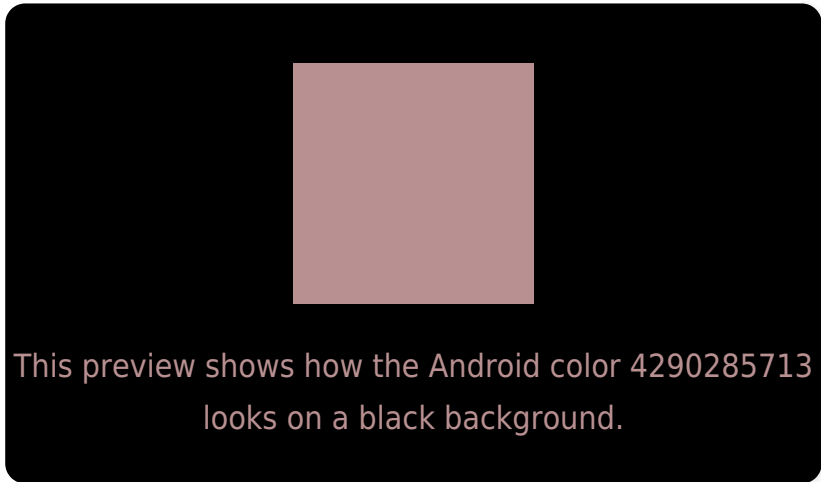
Large Text (above 18pt) WCAG AA × Fail

Any Text WCAG AA × Fail

Large Text (above 18pt) WCAG AAA × Fail

Any Text WCAG AAA × Fail

Black Background



Color Contrast Check

Large Text (above 18pt) WCAG AA ✓ Pass

Any Text WCAG AA ✓ Pass

Large Text (above 18pt) WCAG AAA ✓ Pass

Any Text WCAG AAA ✓ Pass

If you want to check with other color combinations, try the [Color Contrast Checker](#).

Android 4290285713 Background



This preview shows how black text looks on a background with the Android color 4290285713.



This preview shows how white text looks on a background with the Android color 4290285713.

Color Blindness Simulation

Color vision deficiency is a very complex topic, and I could not describe the different causes any better than Wikipedia does, so if you want to learn more, you should check out their [article about color blindness](#).

Dichromacy



Original Color

4290285713

Protanopia

4288584086

Deuteranopia

4289566096



Tritanopia
4290351002

Trichromacy



Original Color
4290285713

Protanomaly
4289173140

Deuteranomaly
4289827728

Tritanomaly
4290350999

Monochromacy



Original Color
4290285713

Achromatopsia
4288453788

Achromatomaly
4289108120

CSS Examples

Text

The CSS property to change the color of the text to Android 4290285713 is called "color". The color property can be set on classes, ids or directly on the HTML element.

This example shows how text in the color `rgb(184, 144, 145)` looks like.

```
.text, #text, p{  
    color:rgb(184, 144, 145)  
}
```

If you want to add a text shadow in that color use the text-shadow property, you can generate a text shadow directly with our [CSS Text Shadow Generator](#).

Here you see how black text with a 4 pixel rgb(184, 144, 145) colored shadow looks like.

```
.shadow{ text-shadow: 4px 4px 2px rgb(184, 144, 145) }
```

Border

The CSS property to change the border of an element to Android 4290285713 is called "border". The border property can be set on classes, ids or directly on the HTML element.

This example shows the color as border, it can be applied via the CSS property "border" or "border-color".

```
.border, #border, table{ border:4px solid rgb(184, 144, 145) }
```

If only the border color should be changed use the property `border-color`.

```
.border{ border-color:rgb(184, 144, 145) }
```

If you want to add a box shadow in that color use:

Here you see how a box with a 4 pixel `rgb(184, 144, 145)` colored shadow looks like.

```
.boxshadow{ -moz-box-shadow:4px 4px 4px  
4px rgb(184, 144, 145); -webkit-box-  
shadow:4px 4px 4px 4px rgb(184, 144, 145);  
box-shadow:4px 4px 4px 4px rgb(184, 144,  
145) }
```

Background

The CSS property to change the background color of an element to Android 4290285713 is called "background". The background property can be set on classes, ids or directly on the HTML element.

```
.background, #background, body{  
background: rgb(184, 144, 145) }
```

If only the background color should be changed can be used:

```
.background{ background-color: rgb(184,  
144, 145) }
```

This example shows the color as background, it is applied via the CSS property "background".

To optimize and compress your CSS code, you can use our [online CSS compressor and optimizer](#) based on csstidy. If you want to create a linear or radial gradient as background or border, check our [CSS Gradient Generator](#).

Hey! You found this booklet interesting? Support Converting Colors with the new Membership Option!

The pro membership hides all ads, plus gives you double the colors in the color bucket, and more awesome pro features!

[Learn more, Memberships starting at \\$2.50/m!](#)

**Follow me
on Twitter!**

@ConvertingColor