

# Converting Colors

Android(4290286485)

Have a look what the booklet for  
Android(4290286485) contains.

<b>Android(4290286485)</b> .....	3
<i><b>Conversions</b></i> .....	4
<i><b>Details</b></i> .....	6
<i><b>Harmonies</b></i> .....	11
<i><b>Previews</b></i> .....	23
<i><b>Color Blindness Simulation</b></i> .....	26
<i><b>CSS Examples</b></i> .....	29

# **Color**

**Android(4290286485)**

# Conversions

## Conversions Part 1

Format	Color
Hex	B89395
RGB	184, 147, 149
RGB Percent	72%, 58%, 58%
CMY	0.2784, 0.4235, 0.4157
CMYK	0.00, 0.20, 0.19, 0.28
HSL	357°, 21%, 65%
HSV	357°, 20%, 72%
XYZ	35.6257, 33.2277, 32.9697
YIQ	158.2910, 21.4100, 8.4660

# Conversions

## Conversions Part 2

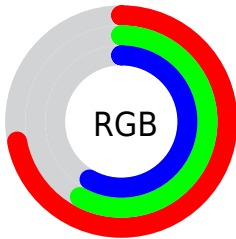
Format	Color
<a href="#">RYB</a>	<a href="#">184, 147, 149</a>
Decimal	<a href="#">12096405</a>
CIELab	<a href="#">64.34, 14.19, 4.22</a>
CIElCh	<a href="#">64, 14.807, 16.575</a>
Yxy	<a href="#">33.2277, 0.3499, 0.3263</a>
Android (android.graphics.Color)	<a href="#">4290286485 (0xFFB89395)</a>
YUV	<a href="#">158.2910, -4.5805, 22.5468</a>
Hunter-Lab	<a href="#">57.6435, 9.4432, 6.4390</a>

# Details

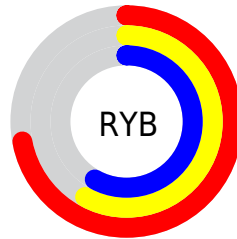
The Android color `4290286485` is a light color, and the websafe version is hex `CC9999`. A complement of this color would be `4287871158`, and the grayscale version is `4288585374`.

A 20% lighter version of the original color is `4293970379`, and `4286734434` is the 20% darker color. If you saturate the color by 10%, you get `4290281860`, and if you desaturate by 10%, it is `4290291110`.

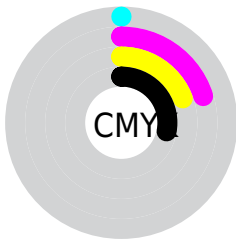
# Distribution



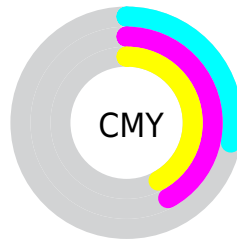
- Red (72%)
- Green (58%)
- Blue (58%)



- Red (72%)
- Yellow (58%)
- Blue (58%)



- Cyan (0%)
- Magenta (20%)
- Yellow (19%)
- Black (28%)



- Cyan (28%)
- Magenta (42%)
- Yellow (42%)

# Brightness & Saturation Gradients

These gradients show how the Android color 4290286485 changes by changing the brightness by 10 percent. The first figure shows a shift by +10% for each color and the second figure -10%.

Similar to the brightness gradients but the following saturation gradients show a change of the Android color 4290286485 by changing the saturation by 10% instead.





4290286485



4290286485

4294967295



4288510331



4293970379



4286734434



4294960615



4285089867



4283445812



4281867295



4280550406



4278190080



4290286485



4290286485



4290281860



4290291110

 4290276978

 4290295992

 4290272353

 4290300617

 4290267471

 4290305499

 4290262846

 4290310124

 4290258221

 4290314237

 4290253339

 4290314239

 4290248714

# Harmonies

## Analogous

The Analogous color harmony consists of three colors that are next to each other on the color wheel.



4289958818



4290286485



4290090377

# Triad

The Triadic color harmony groups three colors that are evenly spaced from another and form a triangle on the color wheel.



4290286485



4287603082



4287012789

# Complementary

The Complementary color scheme is a pair of colors which are on the opposite of each other on the color wheel.



4290286485



4287871158

# Split Complementary

Split-complementary colors differ from the complementary color scheme. The scheme consists of three colors, the original color and two neighbors of the complement color.



4286292655



4290286485



4286751637

# Square

The Square scheme is like the rectangle color scheme, but the four colors are evenly spaced on the color wheel.



4290286485



4288650627



4286227619



4288125877

# Rectangle

The Rectangle color scheme consists of four colors that form a rectangle on the color wheel.



4290286485



4289763460



4286227619



4286750900



# Sweetspot

The Sweet Spot groups the original color and five complimentary colors.



4290286485



4293976546



4290155448



4286082928



4294440951



4286085240



# Same Dimension

The Same Dimension uses a secret algorithm to generate beautiful new colors.



4290286485



4293965497



4290290579



4284240723



4288413704



4280025090



# Inverse Universe

The Inverse Universe completely reimagines the original color for something new.



4290286485



4293965497



4287867064



4284240723



4288413704

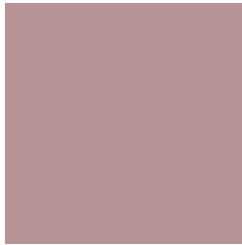


4280025090



# Previews

## White Background



This preview shows how the Android color 4290286485 looks on a white background.

## Color Contrast Check

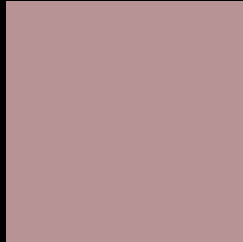
Large Text (above 18pt) WCAG AA × Fail

Any Text WCAG AA × Fail

Large Text (above 18pt) WCAG AAA × Fail

Any Text WCAG AAA × Fail

# Black Background



This preview shows how the Android color 4290286485 looks on a black background.

## Color Contrast Check

Large Text (above 18pt) WCAG AA ✓ Pass

Any Text WCAG AA ✓ Pass

Large Text (above 18pt) WCAG AAA ✓ Pass

Any Text WCAG AAA ✓ Pass

If you want to check with other color combinations, try the [Color Contrast Checker](#).



# Android 4290286485 Background



This preview shows how black text looks on a background with the Android color 4290286485.



This preview shows how white text looks on a background with the Android color 4290286485.

# Color Blindness Simulation

Color vision deficiency is a very complex topic, and I could not describe the different causes any better than Wikipedia does, so if you want to learn more, you should check out their [article about color blindness](#).


## Dichromacy



**Original Color**  
4290286485

**Protanopia**  
4288650138

**Deuteranopia**  
4289632148



**Tritanopia**  
4290351773

# Trichromacy



**Original Color**  
4290286485

**Protanomaly**  
4289239192

**Deuteranomaly**  
4289894036

**Tritanomaly**  
4290351770

# Monochromacy



**Original Color**  
4290286485

**Achromatopsia**  
4288585374

**Achromatomaly**  
4289174171

# CSS Examples

## Text

The CSS property to change the color of the text to Android 4290286485 is called "color". The color property can be set on classes, ids or directly on the HTML element.

This example shows how text in the color `rgb(184, 147, 149)` looks like.

```
.text, #text, p{  
    color:rgb(184, 147, 149)  
}
```

If you want to add a text shadow in that color use the text-shadow property, you can generate a text shadow directly with our [CSS Text Shadow Generator](#).

Here you see how black text with a 4 pixel rgb(184, 147, 149) colored shadow looks like.

```
.shadow{ text-shadow: 4px 4px 2px rgb(184, 147, 149) }
```

## Border

The CSS property to change the border of an element to Android 4290286485 is called "border". The border property can be set on classes, ids or directly on the HTML element.

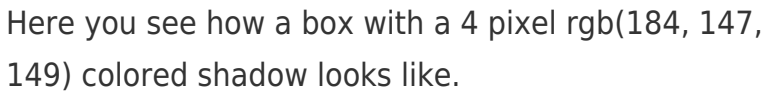
This example shows the color as border, it can be applied via the CSS property "border" or "border-color".

```
.border, #border, table{ border:4px solid rgb(184, 147, 149) }
```

If only the border color should be changed use the property `border-color`.

```
.border{ border-color:rgb(184, 147, 149) }
```

If you want to add a box shadow in that color use:



Here you see how a box with a 4 pixel `rgb(184, 147, 149)` colored shadow looks like.

```
.boxshadow{ -moz-box-shadow:4px 4px 4px 4px rgb(184, 147, 149); -webkit-box-shadow:4px 4px 4px 4px rgb(184, 147, 149); box-shadow:4px 4px 4px 4px rgb(184, 147, 149) }
```

# Background

The CSS property to change the background color of an element to Android 4290286485 is called "background". The background property can be set on classes, ids or directly on the HTML element.

```
.background, #background, body{  
background: rgb(184, 147, 149) }
```

If only the background color should be changed can be used:

```
.background{ background-color: rgb(184,  
147, 149) }
```

This example shows the color as background, it is applied via the CSS property "background".

To optimize and compress your CSS code, you can use our [online CSS compressor and optimizer](#) based on csstidy. If you want to create a linear or radial gradient as background or border, check our [CSS Gradient Generator](#).



Hey! You found this booklet interesting? Support Converting Colors with the new Membership Option!

The pro membership hides all ads, plus gives you double the colors in the color bucket, and more awesome pro features!

**[Learn more, Memberships starting at \\$2.50/m!](#)**

**Follow me  
on Twitter!**

@ConvertingColor