

# Converting Colors

Android(4290286698)

Have a look what the booklet for  
Android(4290286698) contains.

<b>Android(4290286698)</b> .....	3
<b><i>Conversions</i></b> .....	4
<b><i>Details</i></b> .....	6
<b><i>Harmonies</i></b> .....	11
<b><i>Previews</i></b> .....	23
<b><i>Color Blindness Simulation</i></b> .....	26
<b><i>CSS Examples</i></b> .....	29

# **Color**

**Android(4290286698)**

# Conversions

## Conversions Part 1

Format	Color
Hex	B8946A
RGB	184, 148, 106
RGB Percent	72%, 58%, 42%
CMY	0.2784, 0.4196, 0.5843
CMYK	0.00, 0.20, 0.42, 0.28
HSL	32°, 35%, 57%
HSV	32°, 42%, 72%
XYZ	32.9586, 32.4108, 18.1545
YIQ	153.9760, 34.9380, -5.4300

# Conversions

## Conversions Part 2

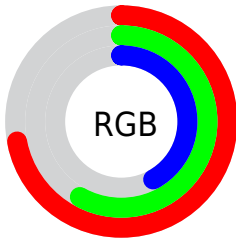
Format	Color
<a href="#">RYB</a>	<a href="#">173, 184, 106</a>
Decimal	<a href="#">12096618</a>
CIELab	<a href="#">63.68, 7.82, 27.30</a>
CIElCh	<a href="#">64, 28.400, 74.012</a>
Yxy	<a href="#">32.4108, 0.3946, 0.3880</a>
Android (android.graphics.Color)	<a href="#">4290286698 (0xFFB8946A)</a>
YUV	<a href="#">153.9760, -23.6522, 26.3310</a>
Hunter-Lab	<a href="#">56.9305, 3.7102, 20.9444</a>

# Details

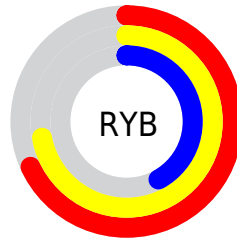
The Android color `4290286698` is a dark color, and the websafe version is hex `CC9966`. A complement of this color would be `4285173432`, and the grayscale version is `4288322202`.

A 20% lighter version of the original color is `4294036126`, and `4286669114` is the 20% darker color. If you saturate the color by 10%, you get `4290284632`, and if you desaturate by 10%, it is `4290288764`.

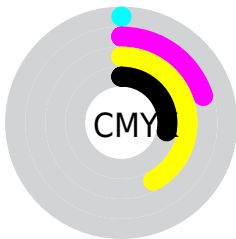
# Distribution



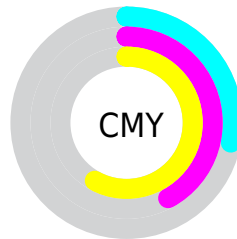
- Red (72%)
- Green (58%)
- Blue (42%)



- Red (68%)
- Yellow (72%)
- Blue (42%)



- Cyan (0%)
- Magenta (20%)
- Yellow (42%)
- Black (28%)



- Cyan (28%)
- Magenta (42%)
- Yellow (58%)

# Brightness & Saturation Gradients

These gradients show how the Android color 4290286698 changes by changing the brightness by 10 percent. The first figure shows a shift by +10% for each color and the second figure -10%.

Similar to the brightness gradients but the following saturation gradients show a change of the Android color 4290286698 by changing the saturation by 10% instead.





4290286698



4290286698

4294967295



4288445009



4294036126



4286669114



4294960825



4284959267



4294967253



4283249422



4294967281



4281671168



4280092416



4278190080



4290286698



4290286698



4290284632



4290288764

 4290282309

 4290291087

 4290280243

 4290293153

 4290277920

 4290295476

 4290275854

 4290297542

 4290274048

 4290299864

 4290301931

 4290304253

 4290306303

# Harmonies

## Analogous

The Analogous color harmony consists of three colors that are next to each other on the color wheel.



4291333240



4290286698



4288715881

# Triad

The Triadic color harmony groups three colors that are evenly spaced from another and form a triangle on the color wheel.



4290286698



4283279526



4289564863

# Complementary

The Complementary color scheme is a pair of colors which are on the opposite of each other on the color wheel.



4290286698



4285173432

# Split Complementary

Split-complementary colors differ from the complementary color scheme. The scheme consists of three colors, the original color and two neighbors of the complement color.



4287338955



4290286698



4283082429

# Square

The Square scheme is like the rectangle color scheme, but the four colors are evenly spaced on the color wheel.



4290286698



4284917643



4284850634



4291070377

# Rectangle

The Rectangle color scheme consists of four colors that form a rectangle on the color wheel.



4290286698



4287471984



4284850634



4288844740



# Sweetspot

The Sweet Spot groups the original color and five complimentary colors.



4290286698



4293976529



4290275982



4286082917



4294440951



4286085240



# Same Dimension

The Same Dimension uses a secret algorithm to generate beautiful new colors.



4290286698



4293965685



4290099306



4284242003



4288435200



4280028928



# Inverse Universe

The Inverse Universe completely reimagines the original color for something new.



4285173432



4285902576



4285360824



4283651932



4278208668

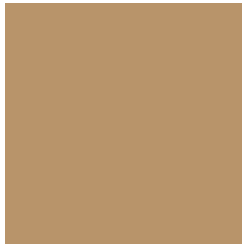


4278193436



# Previews

## White Background



This preview shows how the Android color 4290286698 looks on a white background.

## Color Contrast Check

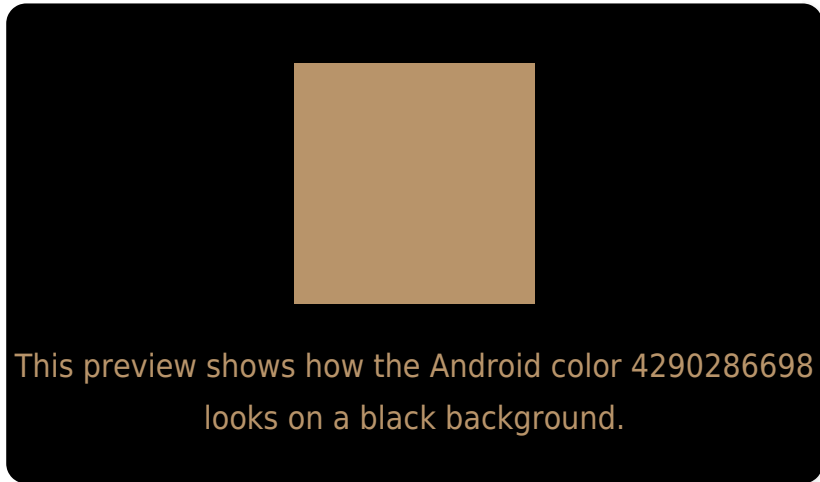
Large Text (above 18pt) WCAG AA × Fail

Any Text WCAG AA × Fail

Large Text (above 18pt) WCAG AAA × Fail

Any Text WCAG AAA × Fail

# Black Background



## Color Contrast Check

Large Text (above 18pt) WCAG AA ✓ Pass

Any Text WCAG AA ✓ Pass

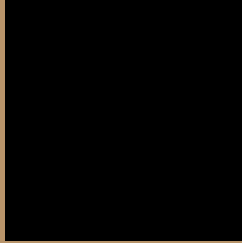
Large Text (above 18pt) WCAG AAA ✓ Pass

Any Text WCAG AAA ✓ Pass

If you want to check with other color combinations, try the [Color Contrast Checker](#).



# Android 4290286698 Background



This preview shows how black text looks on a background with the Android color 4290286698.



This preview shows how white text looks on a background with the Android color 4290286698.

# Color Blindness Simulation

Color vision deficiency is a very complex topic, and I could not describe the different causes any better than Wikipedia does, so if you want to learn more, you should check out their [article about color blindness](#).

## Dichromacy



**Original Color**  
4290286698

**Protanopia**  
4289174125

**Deuteranopia**  
4290286698



**Tritanopia**  
4290612889

# Trichromacy



**Original Color**  
4290286698

**Protanomaly**  
4289566828

**Deuteranomaly**  
4290286698

**Tritanomaly**  
4290482312

# Monochromacy



**Original Color**  
4290286698

**Achromatopsia**  
4288322202

**Achromatomaly**  
4289042569

# CSS Examples

## Text

The CSS property to change the color of the text to Android 4290286698 is called "color". The color property can be set on classes, ids or directly on the HTML element.

This example shows how text in the color `rgb(184, 148, 106)` looks like.

```
.text, #text, p{  
    color:rgb(184, 148, 106)  
}
```

If you want to add a text shadow in that color use the text-shadow property, you can generate a text shadow directly with our [CSS Text Shadow Generator](#).

Here you see how black text with a 4 pixel rgb(184, 148, 106) colored shadow looks like.

```
.shadow{ text-shadow: 4px 4px 2px rgb(184, 148, 106) }
```

## Border

The CSS property to change the border of an element to Android 4290286698 is called "border". The border property can be set on classes, ids or directly on the HTML element.

This example shows the color as border, it can be applied via the CSS property "border" or "border-color".

```
.border, #border, table{ border:4px solid rgb(184, 148, 106) }
```

If only the border color should be changed use the property `border-color`.

```
.border{ border-color:rgb(184, 148, 106) }
```

If you want to add a box shadow in that color use:

Here you see how a box with a 4 pixel `rgb(184, 148, 106)` colored shadow looks like.

```
.boxshadow{ -moz-box-shadow:4px 4px 4px  
4px rgb(184, 148, 106); -webkit-box-  
shadow:4px 4px 4px 4px rgb(184, 148, 106);  
box-shadow:4px 4px 4px 4px rgb(184, 148,  
106) }
```

# Background

The CSS property to change the background color of an element to Android 4290286698 is called "background". The background property can be set on classes, ids or directly on the HTML element.

```
.background, #background, body{  
background: rgb(184, 148, 106) }
```

If only the background color should be changed can be used:

```
.background{ background-color: rgb(184,  
148, 106) }
```

This example shows the color as background, it is applied via the CSS property "background".

To optimize and compress your CSS code, you can use our [online CSS compressor and optimizer](#) based on csstidy. If you want to create a linear or radial gradient as background or border, check our [CSS Gradient Generator](#).



Hey! You found this booklet interesting? Support Converting Colors with the new Membership Option!

The pro membership hides all ads, plus gives you double the colors in the color bucket, and more awesome pro features!

**[Learn more, Memberships starting at \\$2.50/m!](#)**

**Follow me  
on Twitter!**

@ConvertingColor