

Converting Colors

Android(4290291365)

Have a look what the booklet for
Android(4290291365) contains.

Android(4290291365)	3
<i>Conversions</i>	4
<i>Details</i>	6
<i>Harmonies</i>	11
<i>Previews</i>	23
<i>Color Blindness Simulation</i>	26
<i>CSS Examples</i>	29

Color

Android(4290291365)

Conversions

Conversions Part 1

Format	Color
Hex	B8A6A5
RGB	184, 166, 165
RGB Percent	72%, 65%, 65%
CMY	0.2784, 0.3490, 0.3529
CMYK	0.00, 0.10, 0.10, 0.28
HSL	3°, 12%, 68%
HSV	3°, 10%, 72%
XYZ	40.1949, 40.1794, 41.2342
YIQ	171.2680, 11.0490, 3.5050

Conversions

Conversions Part 2

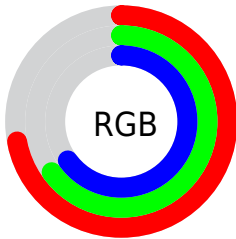
Format	Color
RYB	184, 166, 165
Decimal	12101285
CIELab	69.60, 6.35, 2.88
CIElCh	70, 6.973, 24.424
Yxy	40.1794, 0.3305, 0.3304
Android (android.graphics.Color)	4290291365 (0xFFB8A6A5)
YUV	171.2680, -3.0901, 11.1660
Hunter-Lab	63.3872, 2.2623, 5.8021

Details

The Android color `4290291365` is a light color, and the websafe version is hex `999999`. A complement of this color would be `4289050552`, and the grayscale version is `4289440683`.

A 20% lighter version of the original color is `4293975516`, and `4286804593` is the 20% darker color. If you saturate the color by 10%, you get `4290286995`, and if you desaturate by 10%, it is `4290295735`.

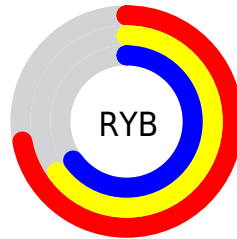
Distribution



Red (72%)

Green (65%)

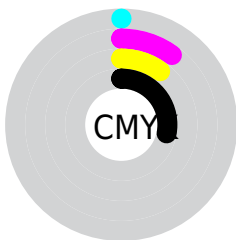
Blue (65%)



Red (72%)

Yellow (65%)

Blue (65%)

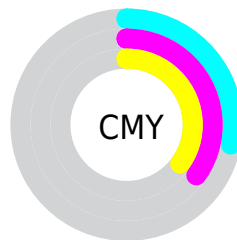


Cyan (0%)

Magenta (10%)

Yellow (10%)

Black (28%)



Cyan (28%)

Magenta (35%)

Yellow (35%)

Brightness & Saturation Gradients

These gradients show how the Android color 4290291365 changes by changing the brightness by 10 percent. The first figure shows a shift by +10% for each color and the second figure -10%.

Similar to the brightness gradients but the following saturation gradients show a change of the Android color 4290291365 by changing the saturation by 10% instead.



4290291365



4290291365

4294967295



4288515211



4293975516



4286804593



4294966008



4285160025



4283515457



4282002475



4280555287



4278976512



4278190080



4290291365



4290291365

 4290286995

 4290295735

 4290282368

 4290300362

 4290277998

 4290304732

 4290273371

 4290309359

 4290269001

 4290313727

 4290264375

 4290314239

 4290260004

 4290255634

 4290251264

Harmonies

Analogous

The Analogous color harmony consists of three colors that are next to each other on the color wheel.



4290160299



4290291365



4290160544

Triad

The Triadic color harmony groups three colors that are evenly spaced from another and form a triangle on the color wheel.



4290291365



4288851362



4288850870

Complementary

The Complementary color scheme is a pair of colors which are on the opposite of each other on the color wheel.



4290291365



4289050552

Split Complementary

Split-complementary colors differ from the complementary color scheme. The scheme consists of three colors, the original color and two neighbors of the complement color.



4288523700



4290291365



4288523945

Square

The Square scheme is like the rectangle color scheme, but the four colors are evenly spaced on the color wheel.



4290291365



4289375134



4288392879



4289374645

Rectangle

The Rectangle color scheme consists of four colors that form a rectangle on the color wheel.



4290291365



4289964190



4288392879



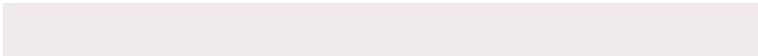
4288720054

Sweetspot

The Sweet Spot groups the original color and five complimentary colors.



4290291365



4293978601



4290291127



4286083955



4294440951



4286085240

Same Dimension

The Same Dimension uses a secret algorithm to generate beautiful new colors.



4290291365



4293973203



4290293669



4284240723



4288415744



4280025344

Inverse Universe

The Inverse Universe completely reimagines the original color for something new.



4289050552



4292079344



4289048248



4283652956



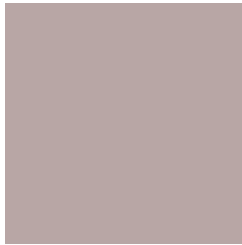
4278227868



4278197020

Previews

White Background



This preview shows how the Android color 4290291365 looks on a white background.

Color Contrast Check

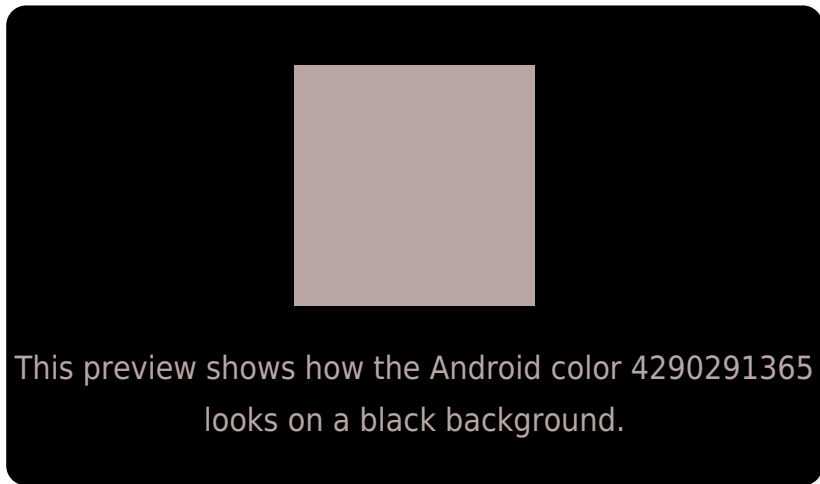
Large Text (above 18pt) WCAG AA × Fail

Any Text WCAG AA × Fail

Large Text (above 18pt) WCAG AAA × Fail

Any Text WCAG AAA × Fail

Black Background



Color Contrast Check

Large Text (above 18pt) WCAG AA ✓ Pass

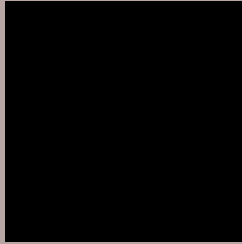
Any Text WCAG AA ✓ Pass

Large Text (above 18pt) WCAG AAA ✓ Pass

Any Text WCAG AAA ✓ Pass

If you want to check with other color combinations, try the [Color Contrast Checker](#).

Android 4290291365 Background



This preview shows how black text looks on a background with the Android color 4290291365.



This preview shows how white text looks on a background with the Android color 4290291365.

Color Blindness Simulation

Color vision deficiency is a very complex topic, and I could not describe the different causes any better than Wikipedia does, so if you want to learn more, you should check out their [article about color blindness](#).

Dichromacy



Original Color
4290291365

Protanopia
4289636775

Deuteranopia
4290552997

Trichromacy



Original Color
4290291365

Protanomaly
4289898662

Deuteranomaly
4290487717

Tritanomaly
4290356653

Monochromacy



Original Color
4290291365

Achromatopsia
4289440683

Achromatomaly
4289767849

CSS Examples

Text

The CSS property to change the color of the text to Android 4290291365 is called "color". The color property can be set on classes, ids or directly on the HTML element.

This example shows how text in the color `rgb(184, 166, 165)` looks like.

```
.text, #text, p{  
    color:rgb(184, 166, 165)  
}
```

If you want to add a text shadow in that color use the text-shadow property, you can generate a text shadow directly with our [CSS Text Shadow Generator](#).

Here you see how black text with a 4 pixel rgb(184, 166, 165) colored shadow looks like.

```
.shadow{ text-shadow: 4px 4px 2px rgb(184, 166, 165) }
```

Border

The CSS property to change the border of an element to Android 4290291365 is called "border". The border property can be set on classes, ids or directly on the HTML element.

This example shows the color as border, it can be applied via the CSS property "border" or "border-color".

```
.border, #border, table{ border:4px solid rgb(184, 166, 165) }
```

If only the border color should be changed use the property `border-color`.

```
.border{ border-color:rgb(184, 166, 165) }
```

If you want to add a box shadow in that color use:

Here you see how a box with a 4 pixel `rgb(184, 166, 165)` colored shadow looks like.

```
.boxshadow{ -moz-box-shadow:4px 4px 4px 4px rgb(184, 166, 165); -webkit-box-shadow:4px 4px 4px 4px rgb(184, 166, 165); box-shadow:4px 4px 4px 4px rgb(184, 166, 165) }
```

Background

The CSS property to change the background color of an element to Android 4290291365 is called "background". The background property can be set on classes, ids or directly on the HTML element.

```
.background, #background, body{  
background: rgb(184, 166, 165) }
```

If only the background color should be changed can be used:

```
.background{ background-color: rgb(184,  
166, 165) }
```

This example shows the color as background, it is applied via the CSS property "background".

To optimize and compress your CSS code, you can use our [online CSS compressor and optimizer](#) based on csstidy. If you want to create a linear or radial gradient as background or border, check our [CSS Gradient Generator](#).

Hey! You found this booklet interesting? Support Converting Colors with the new Membership Option!

The pro membership hides all ads, plus gives you double the colors in the color bucket, and more awesome pro features!

[Learn more, Memberships starting at \\$2.50/m!](#)

**Follow me
on Twitter!**

@ConvertingColor