

Converting Colors

Android(4290346889)

Have a look what the booklet for
Android(4290346889) contains.

Android(4290346889)	3
<i>Conversions</i>	4
<i>Details</i>	6
<i>Harmonies</i>	11
<i>Previews</i>	23
<i>Color Blindness Simulation</i>	26
<i>CSS Examples</i>	29

Color

Android(4290346889)

Conversions

Conversions Part 1

Format	Color
Hex	B97F89
RGB	185, 127, 137
RGB Percent	73%, 50%, 54%
CMY	0.2745, 0.5020, 0.4627
CMYK	0.00, 0.31, 0.26, 0.27
HSL	350°, 29%, 61%
HSV	350°, 31%, 73%
XYZ	32.1123, 27.2992, 27.2437
YIQ	145.4820, 31.3580, 15.4060

Conversions

Conversions Part 2

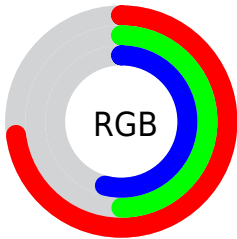
Format	Color
R_{YB}	185, 127, 137
Decimal	12156809
CIE _{Lab}	59.25, 23.89, 3.71
CIE _{LCh}	59, 24.175, 8.838
Yxy	27.2992, 0.3706, 0.3150
Android (android.graphics.Color)	4290346889 (0xFFB97F89)
YUV	145.4820, -4.1816, 34.6573
Hunter-Lab	52.2486, 18.2721, 5.6588

Details

The Android color `4290346889` is a dark color, and the websafe version is hex `CC9999`. A complement of this color would be `4286560687`, and the grayscale version is `4287795858`.

A 20% lighter version of the original color is `4294096062`, and `4286795095` is the 20% darker color. If you saturate the color by 10%, you get `4290342266`, and if you desaturate by 10%, it is `4290351768`.

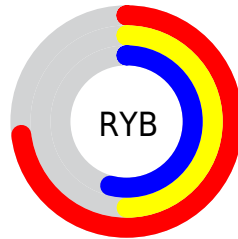
Distribution



Red (73%)

Green (50%)

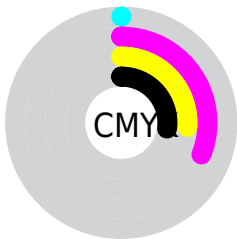
Blue (54%)



Red (73%)

Yellow (50%)

Blue (54%)

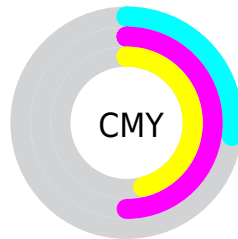


Cyan (0%)

Magenta (31%)

Yellow (26%)

Black (27%)



Cyan (27%)

Magenta (50%)

Yellow (46%)

Brightness & Saturation Gradients

These gradients show how the Android color 4290346889 changes by changing the brightness by 10 percent. The first figure shows a shift by +10% for each color and the second figure -10%.

Similar to the brightness gradients but the following saturation gradients show a change of the Android color 4290346889 by changing the saturation by 10% instead.

 4290346889

 4290346889

4294967295

 4288505456

 4294096062

 4286795095

 4294955226

 4285019712

 4294962423

 4283375402

 4281731094

 4280418305

 4278190080

 4290346889

 4290346889

 4290342266

 4290351768

 4290337386

 4290356392

 4290332763

 4290361271

 4290327884

 4290365894

 4290323260

 4290370774

 4290318381

 4290375397

 4290314272

 4290379764

 4290379775

Harmonies

Analogous

The Analogous color harmony consists of three colors that are next to each other on the color wheel.



4289692062



4290346889



4290216565

Triad

The Triadic color harmony groups three colors that are evenly spaced from another and form a triangle on the color wheel.



4290346889



4286616941



4284454326

Complementary

The Complementary color scheme is a pair of colors which are on the opposite of each other on the color wheel.



4290346889



4286560687

Split Complementary

Split-complementary colors differ from the complementary color scheme. The scheme consists of three colors, the original color and two neighbors of the complement color.



4283341224



4290346889



4285045119

Square

The Square scheme is like the rectangle color scheme, but the four colors are evenly spaced on the color wheel.



4290346889



4288188261



4283669396



4286418616

Rectangle

The Rectangle color scheme consists of four colors that form a rectangle on the color wheel.



4290346889



4289758827



4283669396



4283996082

Sweetspot

The Sweet Spot groups the original color and five complimentary colors.



4290346889



4293974750



4289626041



4286081901



4294440951



4286085240

Same Dimension

The Same Dimension uses a secret algorithm to generate beautiful new colors.



4290346889



4293957028



4290351487



4284240724



4288413723



4280025093

Inverse Universe

The Inverse Universe completely reimagines the original color for something new.



4290346889



4293957028



4286556089



4284240724



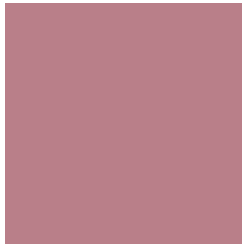
4288413723



4280025093

Previews

White Background



This preview shows how the Android color 4290346889 looks on a white background.

Color Contrast Check

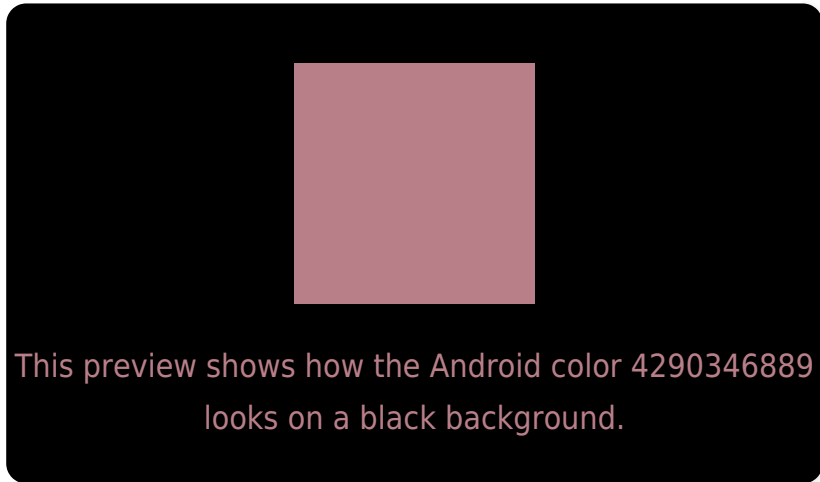
Large Text (above 18pt) WCAG AA ✓ Pass

Any Text WCAG AA ✗ Fail

Large Text (above 18pt) WCAG AAA ✗ Fail

Any Text WCAG AAA ✗ Fail

Black Background



Color Contrast Check

Large Text (above 18pt) WCAG AA ✓ Pass

Any Text WCAG AA ✓ Pass

Large Text (above 18pt) WCAG AAA ✓ Pass

Any Text WCAG AAA × Fail

If you want to check with other color combinations, try the [Color Contrast Checker](#).

Android 4290346889 Background



This preview shows how black text looks on a background with the Android color 4290346889.




This preview shows how white text looks on a background with the Android color 4290346889.

Color Blindness Simulation

Color vision deficiency is a very complex topic, and I could not describe the different causes any better than Wikipedia does, so if you want to learn more, you should check out their [article about color blindness](#).

Dichromacy





Tritanopia
4290346889

Trichromacy



Original Color
4290346889

Protanomaly
4288711055

Deuteranomaly
4289300104

Tritanomaly
4290346889

Monochromacy



Original Color
4290346889

Achromatopsia
4287730065

Achromatomaly
4288711310

CSS Examples

Text

The CSS property to change the color of the text to Android 4290346889 is called "color". The color property can be set on classes, ids or directly on the HTML element.

This example shows how text in the color `rgb(185, 127, 137)` looks like.

```
.text, #text, p{  
    color:rgb(185, 127, 137)  
}
```

If you want to add a text shadow in that color use the text-shadow property, you can generate a text shadow directly with our [CSS Text Shadow Generator](#).

Here you see how black text with a 4 pixel rgb(185, 127, 137) colored shadow looks like.

```
.shadow{ text-shadow: 4px 4px 2px rgb(185, 127, 137) }
```

Border

The CSS property to change the border of an element to Android 4290346889 is called "border". The border property can be set on classes, ids or directly on the HTML element.

This example shows the color as border, it can be applied via the CSS property "border" or "border-color".

```
.border, #border, table{ border:4px solid rgb(185, 127, 137) }
```

If only the border color should be changed use the property `border-color`.

```
.border{ border-color:rgb(185, 127, 137) }
```

If you want to add a box shadow in that color use:

Here you see how a box with a 4 pixel `rgb(185, 127, 137)` colored shadow looks like.

```
.boxshadow{ -moz-box-shadow:4px 4px 4px  
4px rgb(185, 127, 137); -webkit-box-  
shadow:4px 4px 4px 4px rgb(185, 127, 137);  
box-shadow:4px 4px 4px 4px rgb(185, 127,  
137) }
```

Background

The CSS property to change the background color of an element to Android 4290346889 is called "background". The background property can be set on classes, ids or directly on the HTML element.

```
.background, #background, body{  
background: rgb(185, 127, 137) }
```

If only the background color should be changed can be used:

```
.background{ background-color: rgb(185,  
127, 137) }
```

This example shows the color as background, it is applied via the CSS property "background".

To optimize and compress your CSS code, you can use our [online CSS compressor and optimizer](#) based on csstidy. If you want to create a linear or radial gradient as background or border, check our [CSS Gradient Generator](#).

Hey! You found this booklet interesting? Support Converting Colors with the new Membership Option!

The pro membership hides all ads, plus gives you double the colors in the color bucket, and more awesome pro features!

[Learn more, Memberships starting at \\$2.50/m!](#)

**Follow me
on Twitter!**

@ConvertingColor