

Converting Colors

Android(4290347089)

Have a look what the booklet for
Android(4290347089) contains.

Android(4290347089)	3
<i>Conversions</i>	4
<i>Details</i>	6
<i>Harmonies</i>	11
<i>Previews</i>	23
<i>Color Blindness Simulation</i>	26
<i>CSS Examples</i>	29

Color

Android(4290347089)

Conversions

Conversions Part 1

Format	Color
Hex	B98051
RGB	185, 128, 81
RGB Percent	73%, 50%, 32%
CMY	0.2745, 0.4980, 0.6824
CMYK	0.00, 0.31, 0.56, 0.27
HSL	27°, 43%, 52%
HSV	27°, 56%, 73%
XYZ	29.2120, 26.3467, 11.3304
YIQ	139.6850, 49.0590, -2.5330

Conversions

Conversions Part 2

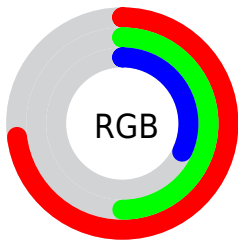
Format	Color
R _Y B	185, 167, 81
Decimal	12157009
CIE Lab	58.36, 16.89, 34.14
CIE LCh	58, 38.092, 63.683
Yxy	26.3467, 0.4367, 0.3939
Android (android.graphics.Color)	4290347089 (0xFFB98051)
YUV	139.6850, -28.9317, 39.7413
Hunter-Lab	51.3290, 11.7606, 22.8427

Details

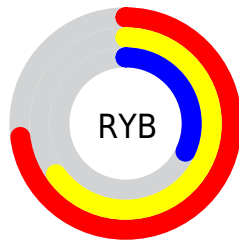
The Android color `4290347089` is a dark color, and the websafe version is hex `CC9966`. A complement of this color would be `4283534009`, and the grayscale version is `4287401100`.

A 20% lighter version of the original color is `4294227331`, and `4286664482` is the 20% darker color. If you saturate the color by 10%, you get `4290344510`, and if you desaturate by 10%, it is `4290349668`.

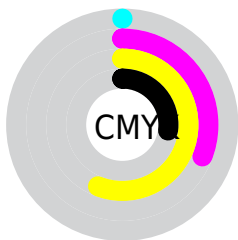
Distribution



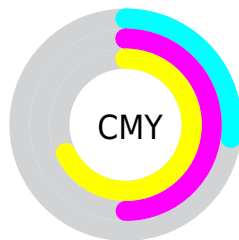
- Red (73%)
- Green (50%)
- Blue (32%)



- Red (73%)
- Yellow (65%)
- Blue (32%)



- Cyan (0%)
- Magenta (31%)
- Yellow (56%)
- Black (27%)



- Cyan (27%)
- Magenta (50%)
- Yellow (68%)

Brightness & Saturation Gradients

These gradients show how the Android color 4290347089 changes by changing the brightness by 10 percent. The first figure shows a shift by +10% for each color and the second figure -10%.

Similar to the brightness gradients but the following saturation gradients show a change of the Android color 4290347089 by changing the saturation by 10% instead.



4290347089



4290347089

4294967295



4288505657



4294227331



4286664482



4294955422



4284823563



4294962617



4283113984



4294967253



4281404672



4294967281



4279631872



4278190080



4290347089



4290347089



4290344510



4290349668

 4290341932

 4290352246

 4290339353

 4290354825

 4290336519

 4290357659

 4290335744

 4290360237

 4290362816

 4290365395

 4290367973

 4290370551

Harmonies

Analogous

The Analogous color harmony consists of three colors that are next to each other on the color wheel.



4291458409



4290347089



4288515144

Triad

The Triadic color harmony groups three colors that are evenly spaced from another and form a triangle on the color wheel.



4290347089



4278230671



4287988420

Complementary

The Complementary color scheme is a pair of colors which are on the opposite of each other on the color wheel.



4290347089



4283534009

Split Complementary

Split-complementary colors differ from the complementary color scheme. The scheme consists of three colors, the original color and two neighbors of the complement color.



4284452559



4290347089



4278230448

Square

The Square scheme is like the rectangle color scheme, but the four colors are evenly spaced on the color wheel.



4290347089



4283472750



4278229191



4290344619

Rectangle

The Rectangle color scheme consists of four colors that form a rectangle on the color wheel.



4290347089



4287074894



4278229191



4286940873

Sweetspot

The Sweet Spot groups the original color and five complimentary colors.



4290347089



4293974471



4290335114



4286081888



4294440951



4286085240

Same Dimension

The Same Dimension uses a secret algorithm to generate beautiful new colors.



4290347089



4293957711



4290360401



4284241747



4288431616



4280028416

Inverse Universe

The Inverse Universe completely reimagines the original color for something new.



4283534009



4283410416



4283520697



4283652188



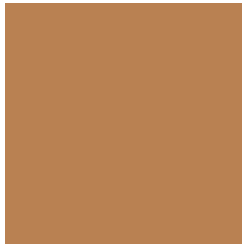
4278211996



4278193948

Previews

White Background



This preview shows how the Android color 4290347089 looks on a white background.

Color Contrast Check

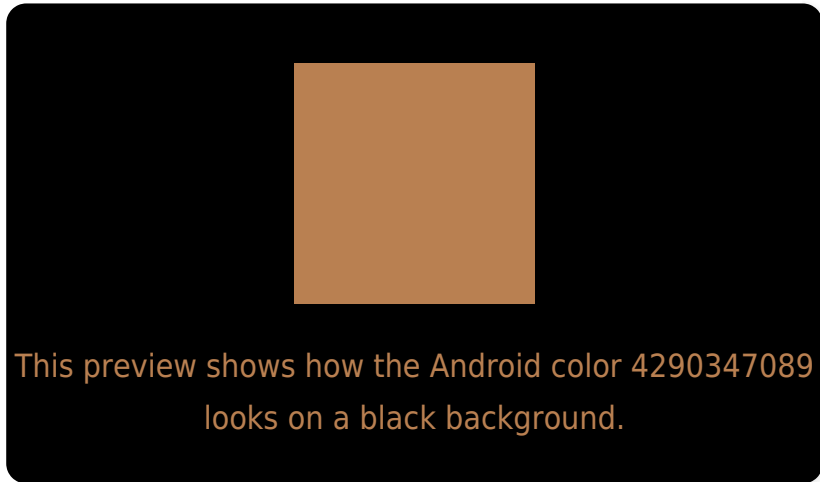
Large Text (above 18pt) WCAG AA ✓ Pass

Any Text WCAG AA ✗ Fail

Large Text (above 18pt) WCAG AAA ✗ Fail

Any Text WCAG AAA ✗ Fail

Black Background



Color Contrast Check

Large Text (above 18pt) WCAG AA ✓ Pass

Any Text WCAG AA ✓ Pass

Large Text (above 18pt) WCAG AAA ✓ Pass

Any Text WCAG AAA × Fail

If you want to check with other color combinations, try the [Color Contrast Checker](#).

Android 4290347089 Background



This preview shows how black text looks on a background with the Android color 4290347089.



This preview shows how white text looks on a background with the Android color 4290347089.

Color Blindness Simulation

Color vision deficiency is a very complex topic, and I could not describe the different causes any better than Wikipedia does, so if you want to learn more, you should check out their [article about color blindness](#).

Dichromacy



Original Color
4290347089

Protanopia
4288318806

Deuteranopia
4289496656

Trichromacy



Original Color
4290347089

Protanomaly
4289038420

Deuteranomaly
4289823824

Tritanomaly
4290542705

Monochromacy



Original Color
4290347089

Achromatopsia
4287401100

Achromatomaly
4288448631

CSS Examples

Text

The CSS property to change the color of the text to Android 4290347089 is called "color". The color property can be set on classes, ids or directly on the HTML element.

This example shows how text in the color `rgb(185, 128, 81)` looks like.

```
.text, #text, p{  
    color:rgb(185, 128, 81)  
}
```

If you want to add a text shadow in that color use the text-shadow property, you can generate a text shadow directly with our [CSS Text Shadow Generator](#).

Here you see how black text with a 4 pixel rgb(185, 128, 81) colored shadow looks like.

```
.shadow{ text-shadow: 4px 4px 2px rgb(185, 128, 81) }
```

Border

The CSS property to change the border of an element to Android 4290347089 is called "border". The border property can be set on classes, ids or directly on the HTML element.

This example shows the color as border, it can be applied via the CSS property "border" or "border-color".

```
.border, #border, table{ border:4px solid rgb(185, 128, 81) }
```

If only the border color should be changed use the property `border-color`.

```
.border{ border-color:rgb(185, 128, 81) }
```

If you want to add a box shadow in that color use:

Here you see how a box with a 4 pixel `rgb(185, 128, 81)` colored shadow looks like.

```
.boxshadow{ -moz-box-shadow:4px 4px 4px  
4px rgb(185, 128, 81); -webkit-box-  
shadow:4px 4px 4px 4px rgb(185, 128, 81);  
box-shadow:4px 4px 4px 4px rgb(185, 128,  
81) }
```

Background

The CSS property to change the background color of an element to Android 4290347089 is called "background". The background property can be set on classes, ids or directly on the HTML element.

```
.background, #background, body{  
background: rgb(185, 128, 81) }
```

If only the background color should be changed can be used:

```
.background{ background-color: rgb(185,  
128, 81) }
```

This example shows the color as background, it is applied via the CSS property "background".

To optimize and compress your CSS code, you can use our [online CSS compressor and optimizer](#) based on csstidy. If you want to create a linear or radial gradient as background or border, check our [CSS Gradient Generator](#).

Hey! You found this booklet interesting? Support Converting Colors with the new Membership Option!

The pro membership hides all ads, plus gives you double the colors in the color bucket, and more awesome pro features!

[Learn more, Memberships starting at \\$2.50/m!](#)

**Follow me
on Twitter!**

@ConvertingColor