

# Converting Colors

Android(4290347387)

Have a look what the booklet for  
Android(4290347387) contains.

<b>Android(4290347387)</b> .....	3
<b><i>Conversions</i></b> .....	4
<b><i>Details</i></b> .....	6
<b><i>Harmonies</i></b> .....	11
<b><i>Previews</i></b> .....	23
<b><i>Color Blindness Simulation</i></b> .....	26
<b><i>CSS Examples</i></b> .....	29

**Color**

**Android(4290347387)**

# Conversions

## Conversions Part 1

<b>Format</b>	<b>Color</b>
Hex	<a href="#">B9817B</a>
RGB	<a href="#">185, 129, 123</a>
RGB Percent	<a href="#">73%, 51%, 48%</a>
CMY	<a href="#">0.2745, 0.4941, 0.5176</a>
CMYK	<a href="#">0.00, 0.30, 0.34, 0.27</a>
HSL	<a href="#">6°, 31%, 60%</a>
HSV	<a href="#">6°, 34%, 73%</a>
XYZ	<a href="#">31.4330, 27.4449, 22.3796</a>
YIQ	<a href="#">145.0600, 35.3020, 10.0060</a>

# Conversions

## Conversions Part 2

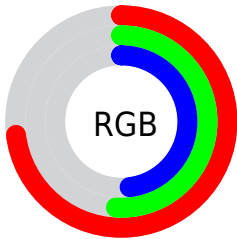
<b>Format</b>	<b>Color</b>
<b>RYB</b>	185, 130, 123
Decimal	12157307
CIELab	59.38, 20.84, 11.94
CIElCh	59, 24.018, 29.816
Yxy	27.4449, 0.3868, 0.3378
Android (android.graphics.Color)	4290347387 (0xFFB9817B)
YUV	145.0600, -10.8756, 35.0274
Hunter-Lab	52.3878, 15.4222, 11.3434

# Details

The Android color **4290347387** is a dark color, and the websafe version is hex **CC9999**. A complement of this color would be **4286297017**, and the grayscale version is **4287730065**.

A 20% lighter version of the original color is **4294096559**, and **4286730058** is the 20% darker color. If you saturate the color by 10%, you get **4290343017**, and if you desaturate by 10%, it is **4290351758**.

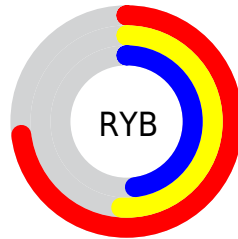
# Distribution



Red (73%)

Green (51%)

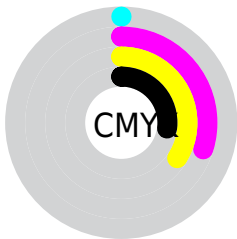
Blue (48%)



Red (73%)

Yellow (51%)

Blue (48%)

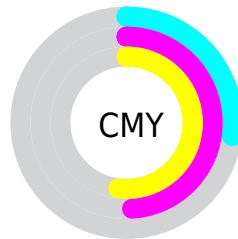


Cyan (0%)

Magenta (30%)

Yellow (34%)

Black (27%)



Cyan (27%)

Magenta (49%)

Yellow (52%)

# Brightness & Saturation Gradients

These gradients show how the Android color 4290347387 changes by changing the brightness by 10 percent. The first figure shows a shift by +10% for each color and the second figure -10%.

Similar to the brightness gradients but the following saturation gradients show a change of the Android color 4290347387 by changing the saturation by 10% instead.



 4290347387

 4290347387

4294967295

 4288505954

 4294096559

 4286730058

 4294955723

 4285020212

 4294962919

 4283310367

 4281731846

 4280287233

 4278190080

 4290347387

 4290347387

 4290343017

 4290351758

 4290338902

 4290355872

 4290334532

 4290360243

 4290330161

 4290364613

 4290325790

 4290368984

 4290321676

 4290373098

 4290318848

 4290377469

 4290379775

# Harmonies

## Analogous

The Analogous color harmony consists of three colors that are next to each other on the color wheel.



4290216080



4290347387



4289758827

# Triad

The Triadic color harmony groups three colors that are evenly spaced from another and form a triangle on the color wheel.



4290347387



4285503865



4285829561

# Complementary

The Complementary color scheme is a pair of colors which are on the opposite of each other on the color wheel.



4290347387



4286297017

# Split Complementary

Split-complementary colors differ from the complementary color scheme. The scheme consists of three colors, the original color and two neighbors of the complement color.



4284061619



4290347387



4284062606

# Square

The Square scheme is like the rectangle color scheme, but the four colors are evenly spaced on the color wheel.



4290347387



4287140970



4283341475



4287793844

# Rectangle

The Rectangle color scheme consists of four colors that form a rectangle on the color wheel.



4290347387



4289039206



4283341475



4285174712



# Sweetspot

The Sweet Spot groups the original color and five complimentary colors.



4290347387



4293974744



4290345908



4286081897



4294440951



4286085240



# Same Dimension

The Same Dimension uses a secret algorithm to generate beautiful new colors.



4290347387



4293958032



4290355067



4284240979



4288417536



4280025856



# Inverse Universe

The Inverse Universe completely reimagines the original color for something new.



4286297017



4287686384



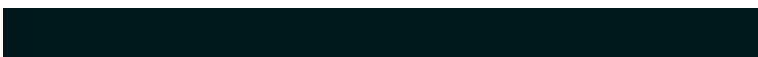
4286289337



4283652956



4278226076

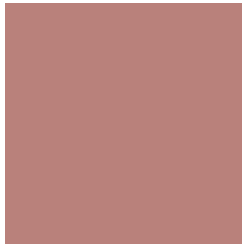


4278196508



# Previews

## White Background



This preview shows how the Android color 4290347387 looks on a white background.

## Color Contrast Check

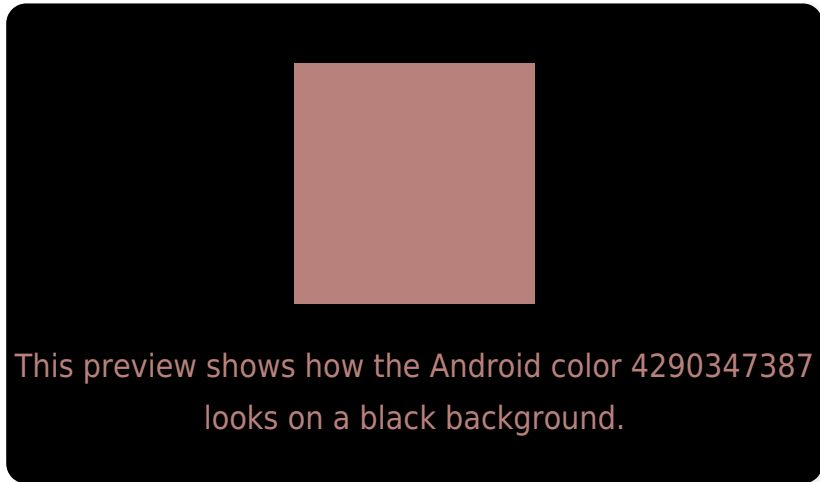
Large Text (above 18pt) WCAG AA ✓ Pass

Any Text WCAG AA ✗ Fail

Large Text (above 18pt) WCAG AAA ✗ Fail

Any Text WCAG AAA ✗ Fail

# Black Background



## Color Contrast Check

Large Text (above 18pt) WCAG AA ✓ Pass

Any Text WCAG AA ✓ Pass

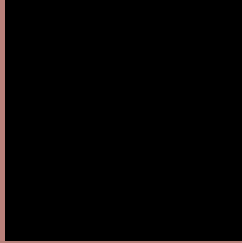
Large Text (above 18pt) WCAG AAA ✓ Pass

Any Text WCAG AAA × Fail

If you want to check with other color combinations, try the [Color Contrast Checker](#).



# Android 4290347387 Background



This preview shows how black text looks on a background with the Android color 4290347387.



This preview shows how white text looks on a background with the Android color 4290347387.

# Color Blindness Simulation

Color vision deficiency is a very complex topic, and I could not describe the different causes any better than Wikipedia does, so if you want to learn more, you should check out their [article about color blindness](#).

## Dichromacy



**Original Color**  
4290347387

**Protanopia**  
4287991682

**Deuteranopia**  
4289038969



# Trichromacy



**Original Color**  
4290347387

**Protanomaly**  
4288842367

**Deuteranomaly**  
4289496954

**Tritanomaly**  
4290412676

# Monochromacy



**Original Color**  
4290347387

**Achromatopsia**  
4287730065

**Achromatomaly**  
4288711561

# CSS Examples

## Text

The CSS property to change the color of the text to Android 4290347387 is called "color". The color property can be set on classes, ids or directly on the HTML element.

This example shows how text in the color `rgb(185, 129, 123)` looks like.

```
.text, #text, p{  
    color:rgb(185, 129, 123)  
}
```

If you want to add a text shadow in that color use the text-shadow property, you can generate a text shadow directly with our [CSS Text Shadow Generator](#).

Here you see how black text with a 4 pixel rgb(185, 129, 123) colored shadow looks like.

```
.shadow{ text-shadow: 4px 4px 2px rgb(185, 129, 123) }
```

## Border

The CSS property to change the border of an element to Android 4290347387 is called "border". The border property can be set on classes, ids or directly on the HTML element.

This example shows the color as border, it can be applied via the CSS property "border" or "border-color".

```
.border, #border, table{ border:4px solid rgb(185, 129, 123) }
```

If only the border color should be changed use the property `border-color`.

```
.border{ border-color:rgb(185, 129, 123) }
```

If you want to add a box shadow in that color use:

Here you see how a box with a 4 pixel `rgb(185, 129, 123)` colored shadow looks like.

```
.boxshadow{ -moz-box-shadow:4px 4px 4px 4px rgb(185, 129, 123); -webkit-box-shadow:4px 4px 4px 4px rgb(185, 129, 123); box-shadow:4px 4px 4px 4px rgb(185, 129, 123) }
```

# Background

The CSS property to change the background color of an element to Android 4290347387 is called "background". The background property can be set on classes, ids or directly on the HTML element.

```
.background, #background, body{  
background: rgb(185, 129, 123) }
```

If only the background color should be changed can be used:

```
.background{ background-color: rgb(185,  
129, 123) }
```

This example shows the color as background, it is applied via the CSS property "background".

To optimize and compress your CSS code, you can use our [online CSS compressor and optimizer](#) based on csstidy. If you want to create a linear or radial gradient as background or border, check our [CSS Gradient Generator](#).



Hey! You found this booklet interesting? Support Converting Colors with the new Membership Option!

The pro membership hides all ads, plus gives you double the colors in the color bucket, and more awesome pro features!

**[Learn more, Memberships starting at \\$2.50/m!](#)**

**Follow me  
on Twitter!**

@ConvertingColor