

Converting Colors

Android(4290347591)

Have a look what the booklet for
Android(4290347591) contains.

Android(4290347591)	3
<i>Conversions</i>	4
<i>Details</i>	6
<i>Harmonies</i>	11
<i>Previews</i>	23
<i>Color Blindness Simulation</i>	26
<i>CSS Examples</i>	29

Color

Android(4290347591)

Conversions

Conversions Part 1

Format	Color
Hex	B98247
RGB	185, 130, 71
RGB Percent	73%, 51%, 28%
CMY	0.2745, 0.4902, 0.7216
CMYK	0.00, 0.30, 0.62, 0.27
HSL	31°, 45%, 50%
HSV	31°, 62%, 73%
XYZ	29.1275, 26.7345, 9.5863
YIQ	139.7190, 51.7190, -6.6890

Conversions

Conversions Part 2

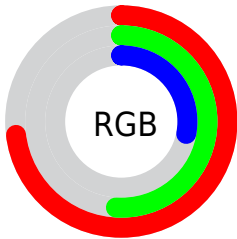
Format	Color
RYB	177, 185, 71
Decimal	12157511
CIELab	58.73, 15.00, 39.87
CIELCh	59, 42.595, 69.385
Yxy	26.7345, 0.4450, 0.4085
Android (android.graphics.Color)	4290347591 (0xFFB98247)
YUV	139.7190, -33.8785, 39.7114
Hunter-Lab	51.7054, 10.0711, 25.2013

Details

The Android color `4290347591` is a dark color, and the websafe version is hex `CC9966`. A complement of this color would be `4282875577`, and the grayscale version is `4287401100`.

A 20% lighter version of the original color is `4294227833`, and `4286599447` is the 20% darker color. If you saturate the color by 10%, you get `4290345269`, and if you desaturate by 10%, it is `4290349914`.

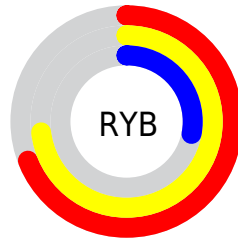
Distribution



Red (73%)

Green (51%)

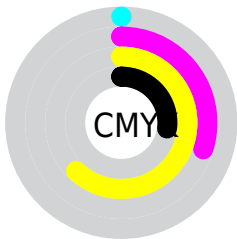
Blue (28%)



Red (69%)

Yellow (73%)

Blue (28%)

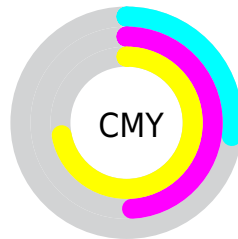


Cyan (0%)

Magenta (30%)

Yellow (62%)

Black (27%)



Cyan (27%)

Magenta (49%)

Yellow (72%)

Brightness & Saturation Gradients

These gradients show how the Android color 4290347591 changes by changing the brightness by 10 percent. The first figure shows a shift by +10% for each color and the second figure -10%.

Similar to the brightness gradients but the following saturation gradients show a change of the Android color 4290347591 by changing the saturation by 10% instead.



4290347591



4290347591

4294967295



4288440623



4294227833



4286599447



4294955923



4284824064



4294963118



4283048960



4294967242



4281339648



4294967270



4279566336



4278190080



4290347591



4290347591



4290345269



4290349914

■ 4290342946

■ 4290352236

■ 4290340624

■ 4290354559

■ 4290338816

■ 4290356881

■ 4290359204

■ 4290361526

■ 4290363593

■ 4290365915

■ 4290368237

Harmonies

Analogous

The Analogous color harmony consists of three colors that are next to each other on the color wheel.



4291720544



4290347591



4288188225

Triad

The Triadic color harmony groups three colors that are evenly spaced from another and form a triangle on the color wheel.



4290347591



4278231192



4288708551

Complementary

The Complementary color scheme is a pair of colors which are on the opposite of each other on the color wheel.



4290347591



4282875577

Split Complementary

Split-complementary colors differ from the complementary color scheme. The scheme consists of three colors, the original color and two neighbors of the complement color.



4284779991



4290347591



4278230972

Square

The Square scheme is like the rectangle color scheme, but the four colors are evenly spaced on the color wheel.



4290347591



4282031730



4278229203



4291130024

Rectangle

The Rectangle color scheme consists of four colors that form a rectangle on the color wheel.



4290347591



4286486090



4278229203



4287595726

Sweetspot

The Sweet Spot groups the original color and five complimentary colors.



4290347591



4293974981



4290332542



4286081885



4294440951



4286085240

Same Dimension

The Same Dimension uses a secret algorithm to generate beautiful new colors.



4290347591



4293958206



4290230599



4284241747



4288434432



4280028928

Inverse Universe

The Inverse Universe completely reimagines the original color for something new.



4282875577



4282291440



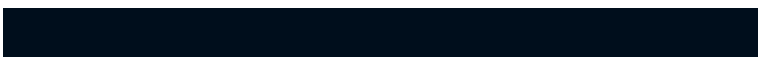
4282992569



4283651932



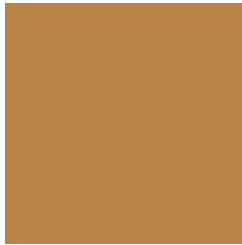
4278209436



4278193692

Previews

White Background



This preview shows how the Android color 4290347591 looks on a white background.

Color Contrast Check

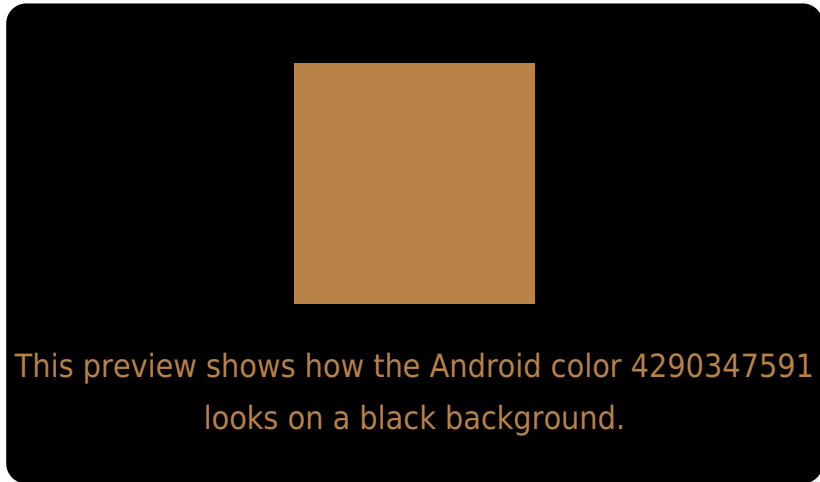
Large Text (above 18pt) WCAG AA ✓ Pass

Any Text WCAG AA ✗ Fail

Large Text (above 18pt) WCAG AAA ✗ Fail

Any Text WCAG AAA ✗ Fail

Black Background



Color Contrast Check

Large Text (above 18pt) WCAG AA ✓ Pass

Any Text WCAG AA ✓ Pass

Large Text (above 18pt) WCAG AAA ✓ Pass

Any Text WCAG AAA × Fail

If you want to check with other color combinations, try the [Color Contrast Checker](#).

Android 4290347591 Background



This preview shows how black text looks on a background with the Android color 4290347591.



This preview shows how white text looks on a background with the Android color 4290347591.

Color Blindness Simulation

Color vision deficiency is a very complex topic, and I could not describe the different causes any better than Wikipedia does, so if you want to learn more, you should check out their [article about color blindness](#).

Dichromacy



Original Color
4290347591

Protanopia
4288450123

Deuteranopia
4289627974

Trichromacy



Original Color
4290347591

Protanomaly
4289169994

Deuteranomaly
4289889606

Tritanomaly
4290543214

Monochromacy



Original Color
4290347591

Achromatopsia
4287401100

Achromatomaly
4288448627

CSS Examples

Text

The CSS property to change the color of the text to Android 4290347591 is called "color". The color property can be set on classes, ids or directly on the HTML element.

This example shows how text in the color `rgb(185, 130, 71)` looks like.

```
.text, #text, p{  
    color:rgb(185, 130, 71)  
}
```

If you want to add a text shadow in that color use the text-shadow property, you can generate a text shadow directly with our [CSS Text Shadow Generator](#).

Here you see how black text with a 4 pixel rgb(185, 130, 71) colored shadow looks like.

```
.shadow{ text-shadow: 4px 4px 2px rgb(185, 130, 71) }
```

Border

The CSS property to change the border of an element to Android 4290347591 is called "border". The border property can be set on classes, ids or directly on the HTML element.

This example shows the color as border, it can be applied via the CSS property "border" or "border-color".

```
.border, #border, table{ border:4px solid rgb(185, 130, 71) }
```

If only the border color should be changed use the property `border-color`.

```
.border{ border-color:rgb(185, 130, 71) }
```

If you want to add a box shadow in that color use:

Here you see how a box with a 4 pixel `rgb(185, 130, 71)` colored shadow looks like.

```
.boxshadow{ -moz-box-shadow:4px 4px 4px  
4px rgb(185, 130, 71); -webkit-box-  
shadow:4px 4px 4px 4px rgb(185, 130, 71);  
box-shadow:4px 4px 4px 4px rgb(185, 130,  
71) }
```

Background

The CSS property to change the background color of an element to Android 4290347591 is called "background". The background property can be set on classes, ids or directly on the HTML element.

```
.background, #background, body{  
background: rgb(185, 130, 71) }
```

If only the background color should be changed can be used:

```
.background{ background-color: rgb(185,  
130, 71) }
```

This example shows the color as background, it is applied via the CSS property "background".

To optimize and compress your CSS code, you can use our [online CSS compressor and optimizer](#) based on csstidy. If you want to create a linear or radial gradient as background or border, check our [CSS Gradient Generator](#).

Hey! You found this booklet interesting? Support Converting Colors with the new Membership Option!

The pro membership hides all ads, plus gives you double the colors in the color bucket, and more awesome pro features!

[Learn more, Memberships starting at \\$2.50/m!](#)

**Follow me
on Twitter!**

@ConvertingColor