

# Converting Colors

Android(4290347650)

Have a look what the booklet for  
Android(4290347650) contains.

<b>Android(4290347650)</b> .....	3
<i><b>Conversions</b></i> .....	4
<i><b>Details</b></i> .....	6
<i><b>Harmonies</b></i> .....	11
<i><b>Previews</b></i> .....	23
<i><b>Color Blindness Simulation</b></i> .....	26
<i><b>CSS Examples</b></i> .....	29

# **Color**

**Android(4290347650)**

# Conversions

## Conversions Part 1

Format	Color
Hex	B98282
RGB	185, 130, 130
RGB Percent	73%, 51%, 51%
CMY	0.2745, 0.4902, 0.4902
CMYK	0.00, 0.30, 0.30, 0.27
HSL	0°, 28%, 62%
HSV	0°, 30%, 73%
XYZ	32.0195, 27.8913, 24.8150
YIQ	146.4450, 32.7800, 11.6600

# Conversions

## Conversions Part 2

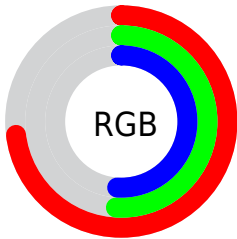
Format	Color
<a href="#">RYB</a>	<a href="#">185, 130, 130</a>
Decimal	<a href="#">12157570</a>
CIELab	<a href="#">59.79, 21.22, 8.51</a>
CIELCh	<a href="#">60, 22.865, 21.844</a>
Yxy	<a href="#">27.8913, 0.3779, 0.3292</a>
Android (android.graphics.Color)	<a href="#">4290347650 (0xFFB98282)</a>
YUV	<a href="#">146.4450, -8.1074, 33.8127</a>
Hunter-Lab	<a href="#">52.8122, 15.8014, 9.1097</a>

# Details

The Android color `4290347650` is a light color, and the websafe version is hex `CC9999`. A complement of this color would be `4286757305`, and the grayscale version is `4287861651`.

A 20% lighter version of the original color is `4294096823`, and `4286730321` is the 20% darker color. If you saturate the color by 10%, you get `4290343024`, and if you desaturate by 10%, it is `4290352533`.

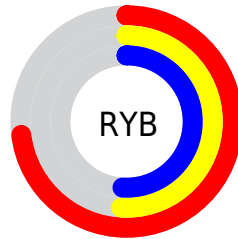
# Distribution



Red (73%)

Green (51%)

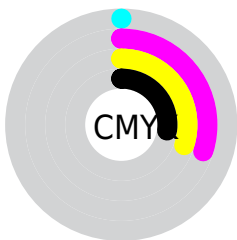
Blue (51%)



Red (73%)

Yellow (51%)

Blue (51%)

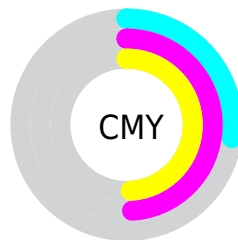


Cyan (0%)

Magenta (30%)

Yellow (30%)

Black (27%)



Cyan (27%)

Magenta (49%)

Yellow (49%)

# Brightness & Saturation Gradients

These gradients show how the Android color 4290347650 changes by changing the brightness by 10 percent. The first figure shows a shift by +10% for each color and the second figure -10%.

Similar to the brightness gradients but the following saturation gradients show a change of the Android color 4290347650 by changing the saturation by 10% instead.



 4290347650

 4290347650

4294967295

 4288506217

 4294096823

 4286730321

 4294955986

 4285020474

 4294963439

 4283376164

 4281732111

 4280418305

 4278190080

 4290347650

 4290347650

 4290343024

 4290352533

 4290338141

 4290357159

 4290333258

 4290362042

 4290328632

 4290366668

 4290324006

 4290371294

 4290319123

 4290376177

 4290314497

 4290379775

 4290314240

# Harmonies

## Analogous

The Analogous color harmony consists of three colors that are next to each other on the color wheel.



4290019990



4290347650



4289955441

# Triad

The Triadic color harmony groups three colors that are evenly spaced from another and form a triangle on the color wheel.



4290347650



4286093431



4285502647

# Complementary

The Complementary color scheme is a pair of colors which are on the opposite of each other on the color wheel.



4290347650



4286757305

# Split Complementary

Split-complementary colors differ from the complementary color scheme. The scheme consists of three colors, the original color and two neighbors of the complement color.



4284062127



4290347650



4284652426

# Square

The Square scheme is like the rectangle color scheme, but the four colors are evenly spaced on the color wheel.



4290347650



4287599466



4283800478



4287401397

# Rectangle

The Rectangle color scheme consists of four colors that form a rectangle on the color wheel.



4290347650



4289366890



4283800478



4284978870

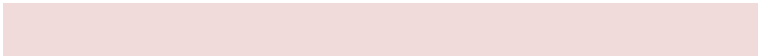


# Sweetspot

The Sweet Spot groups the original color and five complimentary colors.



4290347650



4293974746



4290347705



4286081899



4294440951



4286085240



# Same Dimension

The Same Dimension uses a secret algorithm to generate beautiful new colors.



4290347650



4293958041



4290354562



4284240723



4288413696



4280025088



# Inverse Universe

The Inverse Universe completely reimagines the original color for something new.



4286757305



4288278768



4286750137



4283653212



4278230172



4278197276



# Previews

## White Background



This preview shows how the Android color 4290347650 looks on a white background.

## Color Contrast Check

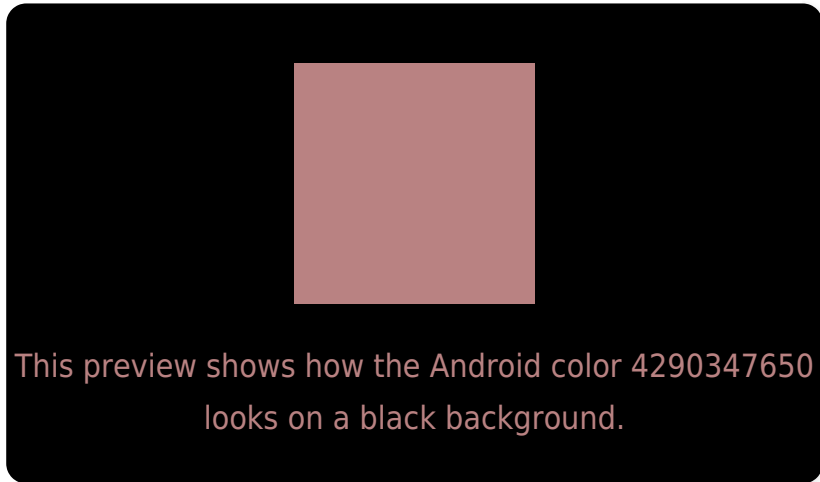
Large Text (above 18pt) WCAG AA ✓ Pass

Any Text WCAG AA ✗ Fail

Large Text (above 18pt) WCAG AAA ✗ Fail

Any Text WCAG AAA ✗ Fail

# Black Background



## Color Contrast Check

Large Text (above 18pt) WCAG AA ✓ Pass

Any Text WCAG AA ✓ Pass

Large Text (above 18pt) WCAG AAA ✓ Pass

Any Text WCAG AAA × Fail

If you want to check with other color combinations, try the [Color Contrast Checker](#).



# Android 4290347650 Background



This preview shows how black text looks on a background with the Android color 4290347650.



This preview shows how white text looks on a background with the Android color 4290347650.

# Color Blindness Simulation

Color vision deficiency is a very complex topic, and I could not describe the different causes any better than Wikipedia does, so if you want to learn more, you should check out their [article about color blindness](#).


## Dichromacy



**Original Color**  
4290347650

**Protanopia**  
4287991945

**Deuteranopia**  
4288973696



**Tritanopia**  
4290412938

# Trichromacy



**Original Color**  
4290347650

**Protanomaly**  
4288842630

**Deuteranomaly**  
4289497217

**Tritanomaly**  
4290412935

# Monochromacy



**Original Color**  
4290347650

**Achromatopsia**  
4287795858

**Achromatomaly**  
4288711820

# CSS Examples

## Text

The CSS property to change the color of the text to Android 4290347650 is called "color". The color property can be set on classes, ids or directly on the HTML element.

This example shows how text in the color `rgb(185, 130, 130)` looks like.

```
.text, #text, p{  
    color:rgb(185, 130, 130)  
}
```

If you want to add a text shadow in that color use the text-shadow property, you can generate a text shadow directly with our [CSS Text Shadow Generator](#).

Here you see how black text with a 4 pixel rgb(185, 130, 130) colored shadow looks like.

```
.shadow{ text-shadow: 4px 4px 2px rgb(185, 130, 130) }
```

## Border

The CSS property to change the border of an element to Android 4290347650 is called "border". The border property can be set on classes, ids or directly on the HTML element.

This example shows the color as border, it can be applied via the CSS property "border" or "border-color".

```
.border, #border, table{ border:4px solid rgb(185, 130, 130) }
```

If only the border color should be changed use the property `border-color`.

```
.border{ border-color:rgb(185, 130, 130) }
```

If you want to add a box shadow in that color use:

Here you see how a box with a 4 pixel `rgb(185, 130, 130)` colored shadow looks like.

```
.boxshadow{ -moz-box-shadow:4px 4px 4px  
4px rgb(185, 130, 130); -webkit-box-  
shadow:4px 4px 4px 4px rgb(185, 130, 130);  
box-shadow:4px 4px 4px 4px rgb(185, 130,  
130) }
```

# Background

The CSS property to change the background color of an element to Android 4290347650 is called "background". The background property can be set on classes, ids or directly on the HTML element.

```
.background, #background, body{  
background: rgb(185, 130, 130) }
```

If only the background color should be changed can be used:

```
.background{ background-color: rgb(185,  
130, 130) }
```

This example shows the color as background, it is applied via the CSS property "background".

To optimize and compress your CSS code, you can use our [online CSS compressor and optimizer](#) based on csstidy. If you want to create a linear or radial gradient as background or border, check our [CSS Gradient Generator](#).



Hey! You found this booklet interesting? Support Converting Colors with the new Membership Option!

The pro membership hides all ads, plus gives you double the colors in the color bucket, and more awesome pro features!

**[Learn more, Memberships starting at \\$2.50/m!](#)**

**Follow me  
on Twitter!**

@ConvertingColor