

Converting Colors

Android(4290350995)

Have a look what the booklet for
Android(4290350995) contains.

Android(4290350995)	3
<i>Conversions</i>	4
<i>Details</i>	6
<i>Harmonies</i>	11
<i>Previews</i>	23
<i>Color Blindness Simulation</i>	26
<i>CSS Examples</i>	29

Color

Android(4290350995)

Conversions

Conversions Part 1

Format	Color
Hex	B98F93
RGB	185, 143, 147
RGB Percent	73%, 56%, 58%
CMY	0.2745, 0.4392, 0.4235
CMYK	0.00, 0.23, 0.21, 0.27
HSL	354°, 23%, 64%
HSV	354°, 23%, 73%
XYZ	35.0965, 32.0658, 31.9433
YIQ	156.0140, 23.7480, 10.1480

Conversions

Conversions Part 2

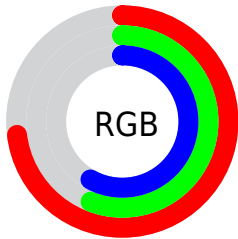
Format	Color
RYB	185, 143, 147
Decimal	12160915
CIELab	63.40, 16.48, 4.00
CIELCh	63, 16.960, 13.636
Yxy	32.0658, 0.3541, 0.3236
Android (android.graphics.Color)	4290350995 (0xFFB98F93)
YUV	156.0140, -4.4439, 25.4207
Hunter-Lab	56.6267, 11.5354, 6.1930

Details

The Android color `4290350995` is a light color, and the websafe version is hex `CC9999`. A complement of this color would be `4287609269`, and the grayscale version is `4288453788`.

A 20% lighter version of the original color is `4294100425`, and `4286798945` is the 20% darker color. If you saturate the color by 10%, you get `4290346370`, and if you desaturate by 10%, it is `4290355876`.

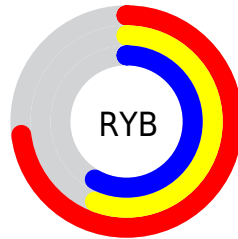
Distribution



Red (73%)

Green (56%)

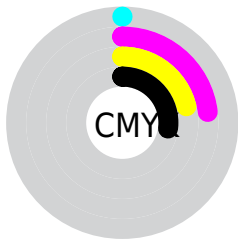
Blue (58%)



Red (73%)

Yellow (56%)

Blue (58%)

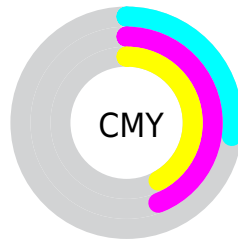


Cyan (0%)

Magenta (23%)

Yellow (21%)

Black (27%)



Cyan (27%)

Magenta (44%)

Yellow (42%)

Brightness & Saturation Gradients

These gradients show how the Android color 4290350995 changes by changing the brightness by 10 percent. The first figure shows a shift by +10% for each color and the second figure -10%.

Similar to the brightness gradients but the following saturation gradients show a change of the Android color 4290350995 by changing the saturation by 10% instead.



4290350995



4290350995

4294967295



4288574841



4294100425



4286798945



4294959589



4285089097

4294967039



4283510322



4281932061



4280614915



4278190080



4290350995



4290350995



4290346370



4290355876

 4290341490

 4290360500

 4290336865

 4290365381

 4290331984

 4290370006

 4290327359

 4290374887

 4290322479

 4290379511

 4290317854

 4290379775

 4290314258

Harmonies

Analogous

The Analogous color harmony consists of three colors that are next to each other on the color wheel.



4289958050



4290350995



4290220421

Triad

The Triadic color harmony groups three colors that are evenly spaced from another and form a triangle on the color wheel.



4290350995



4287471491



4286487990

Complementary

The Complementary color scheme is a pair of colors which are on the opposite of each other on the color wheel.



4290350995



4287609269

Split Complementary

Split-complementary colors differ from the complementary color scheme. The scheme consists of three colors, the original color and two neighbors of the complement color.



4285702574



4290350995



4286423696

Square

The Square scheme is like the rectangle color scheme, but the four colors are evenly spaced on the color wheel.



4290350995



4288584572



4285702816



4287731895

Rectangle

The Rectangle color scheme consists of four colors that form a rectangle on the color wheel.



4290350995



4289827967



4285702816



4286160820

Sweetspot

The Sweet Spot groups the original color and five complimentary colors.



4290350995



4293976033



4290088889



4286082671



4294440951



4286085240

Same Dimension

The Same Dimension uses a secret algorithm to generate beautiful new colors.



4290350995



4293963701



4290355343



4284240723



4288413711



4280025091

Inverse Universe

The Inverse Universe completely reimagines the original color for something new.



4290350995



4293963701



4287604921



4284240723



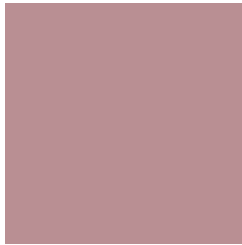
4288413711



4280025091

Previews

White Background



This preview shows how the Android color 4290350995 looks on a white background.

Color Contrast Check

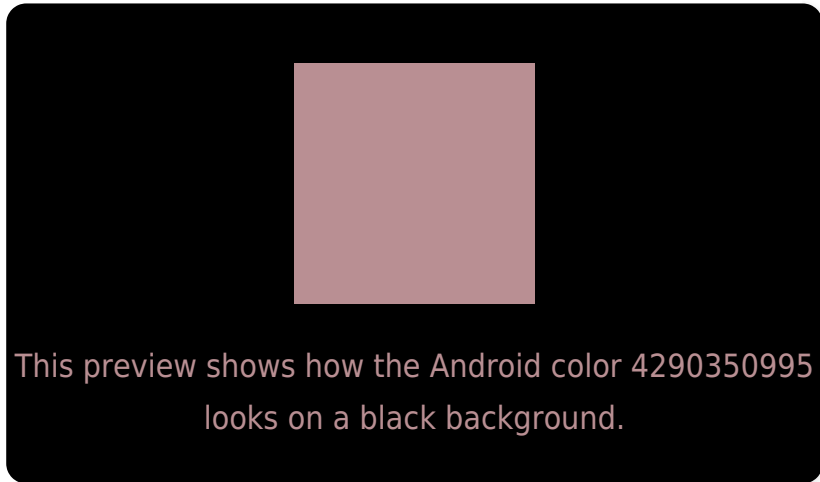
Large Text (above 18pt) WCAG AA × Fail

Any Text WCAG AA × Fail

Large Text (above 18pt) WCAG AAA × Fail

Any Text WCAG AAA × Fail

Black Background



Color Contrast Check

Large Text (above 18pt) WCAG AA ✓ Pass

Any Text WCAG AA ✓ Pass

Large Text (above 18pt) WCAG AAA ✓ Pass

Any Text WCAG AAA ✓ Pass

If you want to check with other color combinations, try the [Color Contrast Checker](#).

Android 4290350995 Background



This preview shows how black text looks on a background with the Android color 4290350995.



This preview shows how white text looks on a background with the Android color 4290350995.

Color Blindness Simulation

Color vision deficiency is a very complex topic, and I could not describe the different causes any better than Wikipedia does, so if you want to learn more, you should check out their [article about color blindness](#).


Dichromacy



Original Color
4290350995

Protanopia
4288518553

Deuteranopia
4289435026



Tritanopia
4290416281

Trichromacy



Original Color
4290350995

Protanomaly
4289172887

Deuteranomaly
4289762194

Tritanomaly
4290416279

Monochromacy



Original Color
4290350995

Achromatopsia
4288453788

Achromatomaly
4289173401

CSS Examples

Text

The CSS property to change the color of the text to Android 4290350995 is called "color". The color property can be set on classes, ids or directly on the HTML element.

This example shows how text in the color `rgb(185, 143, 147)` looks like.

```
.text, #text, p{  
    color:rgb(185, 143, 147)  
}
```

If you want to add a text shadow in that color use the text-shadow property, you can generate a text shadow directly with our [CSS Text Shadow Generator](#).

Here you see how black text with a 4 pixel rgb(185, 143, 147) colored shadow looks like.

```
.shadow{ text-shadow: 4px 4px 2px rgb(185, 143, 147) }
```

Border

The CSS property to change the border of an element to Android 4290350995 is called "border". The border property can be set on classes, ids or directly on the HTML element.

This example shows the color as border, it can be applied via the CSS property "border" or "border-color".

```
.border, #border, table{ border:4px solid rgb(185, 143, 147) }
```

If only the border color should be changed use the property `border-color`.

```
.border{ border-color:rgb(185, 143, 147) }
```

If you want to add a box shadow in that color use:

Here you see how a box with a 4 pixel `rgb(185, 143, 147)` colored shadow looks like.

```
.boxshadow{ -moz-box-shadow:4px 4px 4px  
4px rgb(185, 143, 147); -webkit-box-  
shadow:4px 4px 4px 4px rgb(185, 143, 147);  
box-shadow:4px 4px 4px 4px rgb(185, 143,  
147) }
```

Background

The CSS property to change the background color of an element to Android 4290350995 is called "background". The background property can be set on classes, ids or directly on the HTML element.

```
.background, #background, body{  
background: rgb(185, 143, 147) }
```

If only the background color should be changed can be used:

```
.background{ background-color: rgb(185,  
143, 147) }
```

This example shows the color as background, it is applied via the CSS property "background".

To optimize and compress your CSS code, you can use our [online CSS compressor and optimizer](#) based on csstidy. If you want to create a linear or radial gradient as background or border, check our [CSS Gradient Generator](#).

Hey! You found this booklet interesting? Support Converting Colors with the new Membership Option!

The pro membership hides all ads, plus gives you double the colors in the color bucket, and more awesome pro features!

[Learn more, Memberships starting at \\$2.50/m!](#)

**Follow me
on Twitter!**

@ConvertingColor