

# Converting Colors

Android(4290352998)

Have a look what the booklet for  
Android(4290352998) contains.

<b>Android(4290352998)</b> .....	3
<b><i>Conversions</i></b> .....	4
<b><i>Details</i></b> .....	6
<b><i>Harmonies</i></b> .....	11
<b><i>Previews</i></b> .....	23
<b><i>Color Blindness Simulation</i></b> .....	26
<b><i>CSS Examples</i></b> .....	29

# **Color**

**Android(4290352998)**

# Conversions

## Conversions Part 1

Format	Color
Hex	B99766
RGB	185, 151, 102
RGB Percent	73%, 59%, 40%
CMY	0.2745, 0.4078, 0.6000
CMYK	0.00, 0.18, 0.45, 0.27
HSL	35°, 37%, 56%
HSV	35°, 45%, 73%
XYZ	33.4725, 33.4068, 17.2543
YIQ	155.5800, 35.9930, -8.0310

# Conversions

## Conversions Part 2

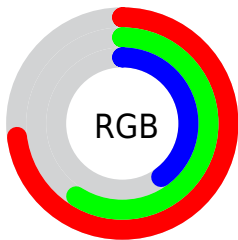
<b>Format</b>	<b>Color</b>
<b>RYB</b>	160, 185, 102
Decimal	12162918
CIELab	64.49, 6.16, 30.55
CIELCh	64, 31.159, 78.606
Yxy	33.4068, 0.3978, 0.3971
Android (android.graphics.Color)	4290352998 (0xFFB99766)
YUV	155.5800, -26.4149, 25.8013
Hunter-Lab	57.7986, 2.2257, 22.7595

# Details

The Android color `4290352998` is a dark color, and the websafe version is hex `CC9966`. A complement of this color would be `4284909753`, and the grayscale version is `4288453788`.

A 20% lighter version of the original color is `4294167962`, and `4286735414` is the 20% darker color. If you saturate the color by 10%, you get `4290350932`, and if you desaturate by 10%, it is `4290355065`.

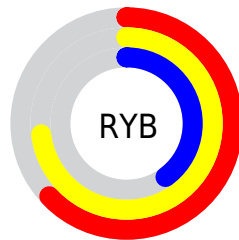
# Distribution



Red (73%)

Green (59%)

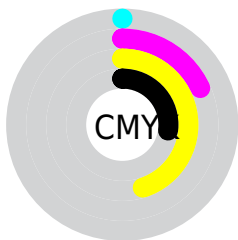
Blue (40%)



Red (63%)

Yellow (73%)

Blue (40%)

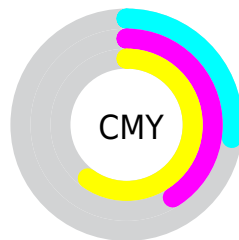


Cyan (0%)

Magenta (18%)

Yellow (45%)

Black (27%)



Cyan (27%)

Magenta (41%)

Yellow (60%)

# Brightness & Saturation Gradients

These gradients show how the Android color 4290352998 changes by changing the brightness by 10 percent. The first figure shows a shift by +10% for each color and the second figure -10%.

Similar to the brightness gradients but the following saturation gradients show a change of the Android color 4290352998 by changing the saturation by 10% instead.



 4290352998

 4290352998

4294967295

 4288511310

 4294167962

 4286735414

 4294961589

 4285025311

 4294967248

 4283315720

 4294967277

 4281737472

 4280093440

 4278190080

 4290352998

 4290352998

 4290350932

 4290355065

 4290349121

 4290356875

 4290347055

 4290358941

 4290345244

 4290360752

 4290343177

 4290362819

 4290342144

 4290364629

 4290366696

 4290368762

 4290370559

# Harmonies

## Analogous

The Analogous color harmony consists of three colors that are next to each other on the color wheel.



4291595892



4290352998



4288585831

# Triad

The Triadic color harmony groups three colors that are evenly spaced from another and form a triangle on the color wheel.



4290352998



4282428333



4290088897

# Complementary

The Complementary color scheme is a pair of colors which are on the opposite of each other on the color wheel.



4290352998



4284909753

# Split Complementary

Split-complementary colors differ from the complementary color scheme. The scheme consists of three colors, the original color and two neighbors of the complement color.



4287732177



4290352998



4282493381

# Square

The Square scheme is like the rectangle color scheme, but the four colors are evenly spaced on the color wheel.



4290352998



4284328848



4284916434



4291594408

# Rectangle

The Rectangle color scheme consists of four colors that form a rectangle on the color wheel.



4290352998



4287210864



4284916434



4289368776

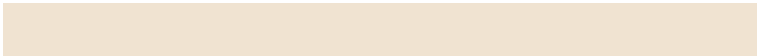


# Sweetspot

The Sweet Spot groups the original color and five complimentary colors.



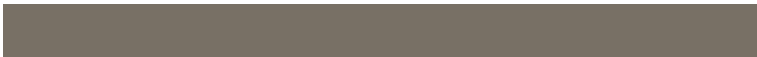
4290352998



4293977041



4290340489



4286083173



4294440951



4286085240



# Same Dimension

The Same Dimension uses a secret algorithm to generate beautiful new colors.



4290352998



4293966702



4289902950



4284242003



4288437248



4280029440



# Inverse Universe

The Inverse Universe completely reimagines the original color for something new.



4284909753



4285441008



4285359801



4283651676



4278206620

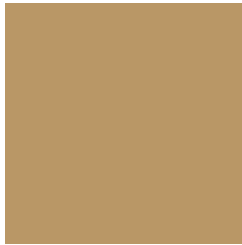


4278192924



# Previews

## White Background



This preview shows how the Android color 4290352998 looks on a white background.

## Color Contrast Check

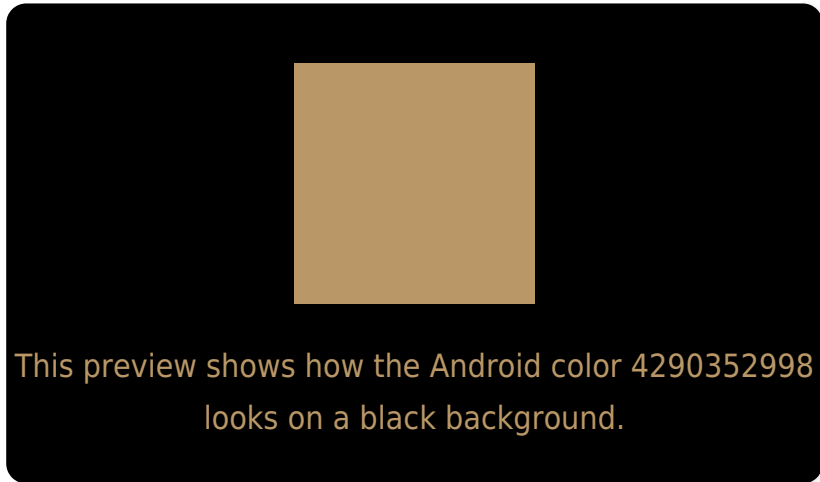
Large Text (above 18pt) WCAG AA × Fail

Any Text WCAG AA × Fail

Large Text (above 18pt) WCAG AAA × Fail

Any Text WCAG AAA × Fail

# Black Background



## Color Contrast Check

Large Text (above 18pt) WCAG AA ✓ Pass

Any Text WCAG AA ✓ Pass

Large Text (above 18pt) WCAG AAA ✓ Pass

Any Text WCAG AAA ✓ Pass

If you want to check with other color combinations, try the [Color Contrast Checker](#).



# Android 4290352998 Background



This preview shows how black text looks on a background with the Android color 4290352998.



This preview shows how white text looks on a background with the Android color 4290352998.

# Color Blindness Simulation

Color vision deficiency is a very complex topic, and I could not describe the different causes any better than Wikipedia does, so if you want to learn more, you should check out their [article about color blindness](#).


## Dichromacy



**Original Color**  
[4290352998](#)

**Protanopia**  
[4289371496](#)

**Deuteranopia**  
[4290549350](#)



**Tritanopia**  
4290678939

# Trichromacy



**Original Color**  
4290352998

**Protanomaly**  
4289698663

**Deuteranomaly**  
4290483814

**Tritanomaly**  
4290548616

# Monochromacy



**Original Color**  
4290352998

**Achromatopsia**  
4288453788

**Achromatomaly**  
4289174152

# CSS Examples

## Text

The CSS property to change the color of the text to Android 4290352998 is called "color". The color property can be set on classes, ids or directly on the HTML element.

This example shows how text in the color `rgb(185, 151, 102)` looks like.

```
.text, #text, p{  
    color:rgb(185, 151, 102)  
}
```

If you want to add a text shadow in that color use the text-shadow property, you can generate a text shadow directly with our [CSS Text Shadow Generator](#).

Here you see how black text with a 4 pixel rgb(185, 151, 102) colored shadow looks like.

```
.shadow{ text-shadow: 4px 4px 2px rgb(185, 151, 102) }
```

## Border

The CSS property to change the border of an element to Android 4290352998 is called "border". The border property can be set on classes, ids or directly on the HTML element.

This example shows the color as border, it can be applied via the CSS property "border" or "border-color".

```
.border, #border, table{ border:4px solid rgb(185, 151, 102) }
```

If only the border color should be changed use the property `border-color`.

```
.border{ border-color:rgb(185, 151, 102) }
```

If you want to add a box shadow in that color use:

Here you see how a box with a 4 pixel `rgb(185, 151, 102)` colored shadow looks like.

```
.boxshadow{ -moz-box-shadow:4px 4px 4px  
4px rgb(185, 151, 102); -webkit-box-  
shadow:4px 4px 4px 4px rgb(185, 151, 102);  
box-shadow:4px 4px 4px 4px rgb(185, 151,  
102) }
```

# Background

The CSS property to change the background color of an element to Android 4290352998 is called "background". The background property can be set on classes, ids or directly on the HTML element.

```
.background, #background, body{  
background: rgb(185, 151, 102) }
```

If only the background color should be changed can be used:

```
.background{ background-color: rgb(185,  
151, 102) }
```

This example shows the color as background, it is applied via the CSS property "background".

To optimize and compress your CSS code, you can use our [online CSS compressor and optimizer](#) based on csstidy. If you want to create a linear or radial gradient as background or border, check our [CSS Gradient Generator](#).



Hey! You found this booklet interesting? Support Converting Colors with the new Membership Option!

The pro membership hides all ads, plus gives you double the colors in the color bucket, and more awesome pro features!

**[Learn more, Memberships starting at \\$2.50/m!](#)**

**Follow me  
on Twitter!**

@ConvertingColor