

# Converting Colors

Android(4290356108)

Have a look what the booklet for  
Android(4290356108) contains.

<b>Android(4290356108)</b> .....	3
<b><i>Conversions</i></b> .....	4
<b><i>Details</i></b> .....	6
<b><i>Harmonies</i></b> .....	11
<b><i>Previews</i></b> .....	23
<b><i>Color Blindness Simulation</i></b> .....	26
<b><i>CSS Examples</i></b> .....	29

# **Color**

**Android(4290356108)**

# Conversions

## Conversions Part 1

Format	Color
Hex	B9A38C
RGB	185, 163, 140
RGB Percent	73%, 64%, 55%
CMY	0.2745, 0.3608, 0.4510
CMYK	0.00, 0.12, 0.24, 0.27
HSL	31°, 24%, 64%
HSV	31°, 24%, 73%
XYZ	37.8384, 38.4021, 30.2290
YIQ	166.9560, 20.4950, -2.4890

# Conversions

## Conversions Part 2

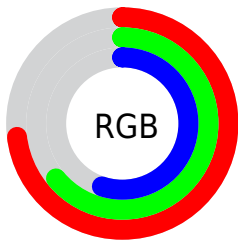
Format	Color
<a href="#">RYB</a>	<a href="#">183, 185, 140</a>
Decimal	<a href="#">12166028</a>
CIELab	<a href="#">68.32, 4.39, 14.90</a>
CIELCh	<a href="#">68, 15.533, 73.588</a>
Yxy	<a href="#">38.4021, 0.3554, 0.3607</a>
Android (android.graphics.Color)	<a href="#">4290356108</a> ( <a href="#">0xFFB9A38C</a> )
YUV	<a href="#">166.9560, -13.2893, 15.8246</a>
Hunter-Lab	<a href="#">61.9694, 0.5452, 14.4567</a>

# Details

The Android color **4290356108** is a light color, and the websafe version is hex **999999**. A complement of this color would be **4287406777**, and the grayscale version is **4289177511**.

A 20% lighter version of the original color is **4294040258**, and **4286803802** is the 20% darker color. If you saturate the color by 10%, you get **4290353786**, and if you desaturate by 10%, it is **4290358431**.

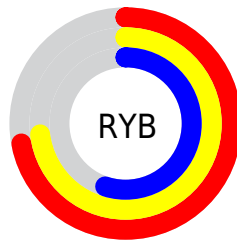
# Distribution



Red (73%)

Green (64%)

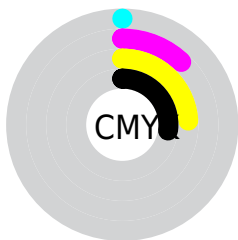
Blue (55%)



Red (72%)

Yellow (73%)

Blue (55%)

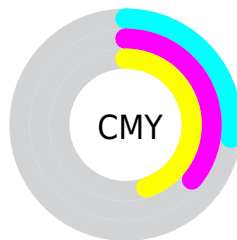


Cyan (0%)

Magenta (12%)

Yellow (24%)

Black (27%)



Cyan (27%)

Magenta (36%)

Yellow (45%)

# Brightness & Saturation Gradients

These gradients show how the Android color 4290356108 changes by changing the brightness by 10 percent. The first figure shows a shift by +10% for each color and the second figure -10%.

Similar to the brightness gradients but the following saturation gradients show a change of the Android color 4290356108 by changing the saturation by 10% instead.





4290356108



4290356108

4294967295



4288579954



4294040258



4286803802



4294964958



4285159234



4294967290



4283514924



4281936407



4280554752



4278190080



4290356108



4290356108



4290353786



4290358431

 4290351463

 4290360753

 4290349141

 4290363076

 4290346818

 4290365398

 4290344496

 4290367721

 4290342173

 4290370043

 4290339850

 4290372351

 4290338560

 4290374655

 4290376959

# Harmonies

## Analogous

The Analogous color harmony consists of three colors that are next to each other on the color wheel.



4290944916



4290356108



4289439883

# Triad

The Triadic color harmony groups three colors that are evenly spaced from another and form a triangle on the color wheel.



4290356108



4286820269



4289831355

# Complementary

The Complementary color scheme is a pair of colors which are on the opposite of each other on the color wheel.



4290356108



4287406777

# Split Complementary

Split-complementary colors differ from the complementary color scheme. The scheme consists of three colors, the original color and two neighbors of the complement color.



4288652994



4290356108



4286819769

# Square

The Square scheme is like the rectangle color scheme, but the four colors are evenly spaced on the color wheel.



4290356108



4287409822



4287539905



4290682543

# Rectangle

The Rectangle color scheme consists of four colors that form a rectangle on the color wheel.



4290356108



4288719503



4287539905



4289438398

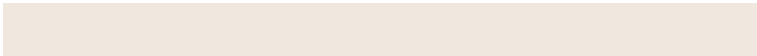


# Sweetspot

The Sweet Spot groups the original color and five complimentary colors.



4290356108



4293978079



4290350243



4286083950



4294440951



4286085240



# Same Dimension

The Same Dimension uses a secret algorithm to generate beautiful new colors.



4290356108



4293971626



4290361740



4284241747



4288434176



4280028672



# Inverse Universe

The Inverse Universe completely reimagines the original color for something new.



4287406777



4289383664



4287401145



4283651932



4278209692

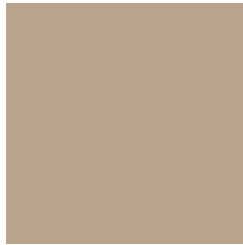


4278193692



# Previews

## White Background



This preview shows how the Android color 4290356108 looks on a white background.

## Color Contrast Check

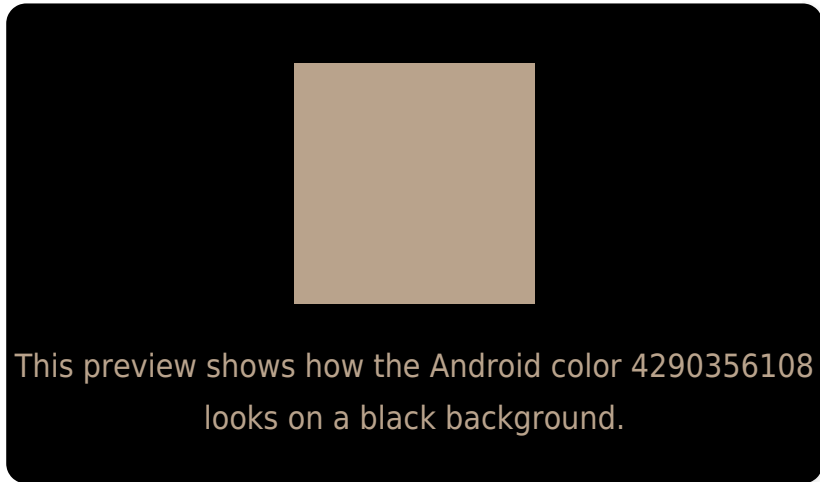
Large Text (above 18pt) WCAG AA × Fail

Any Text WCAG AA × Fail

Large Text (above 18pt) WCAG AAA × Fail

Any Text WCAG AAA × Fail

# Black Background



## Color Contrast Check

Large Text (above 18pt) WCAG AA ✓ Pass

Any Text WCAG AA ✓ Pass

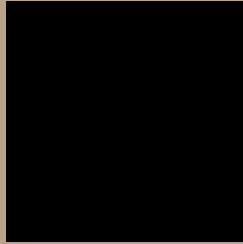
Large Text (above 18pt) WCAG AAA ✓ Pass

Any Text WCAG AAA ✓ Pass

If you want to check with other color combinations, try the [Color Contrast Checker](#).



# Android 4290356108 Background



This preview shows how black text looks on a background with the Android color 4290356108.



This preview shows how white text looks on a background with the Android color 4290356108.

# Color Blindness Simulation

Color vision deficiency is a very complex topic, and I could not describe the different causes any better than Wikipedia does, so if you want to learn more, you should check out their [article about color blindness](#).

## Dichromacy



**Original Color**


4290356108

**Protanopia**

4289701518

**Deuteranopia**

4290814093



**Tritanopia**  
4290617259

# Trichromacy



**Original Color**  
4290356108

**Protanomaly**  
4289963405

**Deuteranomaly**  
4290617741

**Tritanomaly**  
4290551968

# Monochromacy



**Original Color**  
4290356108

**Achromatopsia**  
4289177511

**Achromatomaly**  
4289635997

# CSS Examples

## Text

The CSS property to change the color of the text to Android 4290356108 is called "color". The color property can be set on classes, ids or directly on the HTML element.

This example shows how text in the color `rgb(185, 163, 140)` looks like.

```
.text, #text, p{  
    color:rgb(185, 163, 140)  
}
```

If you want to add a text shadow in that color use the text-shadow property, you can generate a text shadow directly with our [CSS Text Shadow Generator](#).

Here you see how black text with a 4 pixel rgb(185, 163, 140) colored shadow looks like.

```
.shadow{ text-shadow: 4px 4px 2px rgb(185, 163, 140) }
```

## Border

The CSS property to change the border of an element to Android 4290356108 is called "border". The border property can be set on classes, ids or directly on the HTML element.

This example shows the color as border, it can be applied via the CSS property "border" or "border-color".

```
.border, #border, table{ border:4px solid rgb(185, 163, 140) }
```

If only the border color should be changed use the property `border-color`.

```
.border{ border-color:rgb(185, 163, 140) }
```

If you want to add a box shadow in that color use:

Here you see how a box with a 4 pixel `rgb(185, 163, 140)` colored shadow looks like.

```
.boxshadow{ -moz-box-shadow:4px 4px 4px  
4px rgb(185, 163, 140); -webkit-box-  
shadow:4px 4px 4px 4px rgb(185, 163, 140);  
box-shadow:4px 4px 4px 4px rgb(185, 163,  
140) }
```

# Background

The CSS property to change the background color of an element to Android 4290356108 is called "background". The background property can be set on classes, ids or directly on the HTML element.

```
.background, #background, body{  
background: rgb(185, 163, 140) }
```

If only the background color should be changed can be used:

```
.background{ background-color: rgb(185,  
163, 140) }
```

This example shows the color as background, it is applied via the CSS property "background".

To optimize and compress your CSS code, you can use our [online CSS compressor and optimizer](#) based on csstidy. If you want to create a linear or radial gradient as background or border, check our [CSS Gradient Generator](#).



Hey! You found this booklet interesting? Support Converting Colors with the new Membership Option!

The pro membership hides all ads, plus gives you double the colors in the color bucket, and more awesome pro features!

**[Learn more, Memberships starting at \\$2.50/m!](#)**

**Follow me  
on Twitter!**

@ConvertingColor