

Converting Colors

Android(4290356382)

Have a look what the booklet for
Android(4290356382) contains.

Android(4290356382)	3
<i>Conversions</i>	4
<i>Details</i>	6
<i>Harmonies</i>	11
<i>Previews</i>	23
<i>Color Blindness Simulation</i>	26
<i>CSS Examples</i>	29

Color

Android(4290356382)

Conversions

Conversions Part 1

Format	Color
Hex	B9A49E
RGB	185, 164, 158
RGB Percent	73%, 64%, 62%
CMY	0.2745, 0.3569, 0.3804
CMYK	0.00, 0.11, 0.15, 0.27
HSL	13°, 16%, 67%
HSV	13°, 15%, 73%
XYZ	39.4546, 39.3338, 37.8605
YIQ	169.5950, 14.4420, 2.5860

Conversions

Conversions Part 2

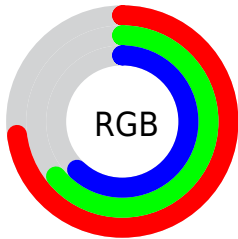
Format	Color
RYB	185, 166, 158
Decimal	12166302
CIELab	68.99, 6.64, 5.90
CIElCh	69, 8.880, 41.634
Yxy	39.3338, 0.3382, 0.3372
Android (android.graphics.Color)	4290356382 (0xFFB9A49E)
YUV	169.5950, -5.7163, 13.5102
Hunter-Lab	62.7167, 2.5388, 8.1098

Details

The Android color `4290356382` is a light color, and the websafe version is hex `999999`. A complement of this color would be `4288590777`, and the grayscale version is `4289374890`.

A 20% lighter version of the original color is `4294040533`, and `4286869611` is the 20% darker color. If you saturate the color by 10%, you get `4290352780`, and if you desaturate by 10%, it is `4290359985`.

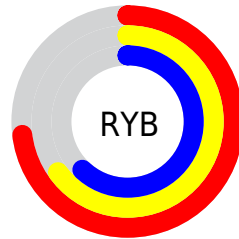
Distribution



Red (73%)

Green (64%)

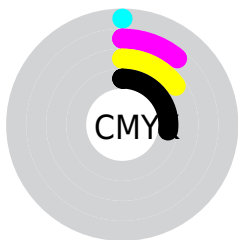
Blue (62%)



Red (73%)

Yellow (65%)

Blue (62%)

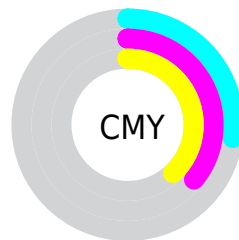


Cyan (0%)

Magenta (11%)

Yellow (15%)

Black (27%)



Cyan (27%)

Magenta (36%)

Yellow (38%)

Brightness & Saturation Gradients

These gradients show how the Android color 4290356382 changes by changing the brightness by 10 percent. The first figure shows a shift by +10% for each color and the second figure -10%.

Similar to the brightness gradients but the following saturation gradients show a change of the Android color 4290356382 by changing the saturation by 10% instead.



4290356382



4290356382

4294967295



4288580228



4294040533



4286869611



4294965233



4285159507



4283580732



4282067494



4280620561



4278583296



4278190080



4290356382



4290356382

 4290352780

 4290359985

 4290348921

 4290363843

 4290345319

 4290367445

 4290341460

 4290371304

 4290337858

 4290374907

 4290334255

 4290378495

 4290330397

 4290379775

 4290326794

 4290324736

Harmonies

Analogous

The Analogous color harmony consists of three colors that are next to each other on the color wheel.



4290421669



4290356382



4290029209

Triad

The Triadic color harmony groups three colors that are evenly spaced from another and form a triangle on the color wheel.



4290356382



4288327075



4288981176

Complementary

The Complementary color scheme is a pair of colors which are on the opposite of each other on the color wheel.



4290356382



4288590777

Split Complementary

Split-complementary colors differ from the complementary color scheme. The scheme consists of three colors, the original color and two neighbors of the complement color.



4288392119



4290356382



4287999403

Square

The Square scheme is like the rectangle color scheme, but the four colors are evenly spaced on the color wheel.



4290356382



4288850844



4287999155



4289635764

Rectangle

The Rectangle color scheme consists of four colors that form a rectangle on the color wheel.



4290356382



4289702040



4287999155



4288784824

Sweetspot

The Sweet Spot groups the original color and five complimentary colors.



4290356382



4293978342



4290354867



4286083954



4294440951



4286085240

Same Dimension

The Same Dimension uses a secret algorithm to generate beautiful new colors.



4290356382



4293971653



4290359710



4284241235



4288422656



4280026624

Inverse Universe

The Inverse Universe completely reimagines the original color for something new.



4288590777



4291159792



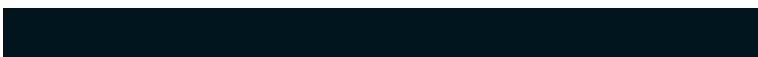
4288587449



4283652700



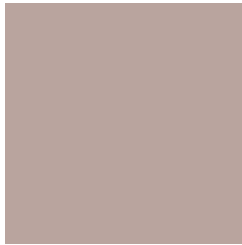
4278221212



4278195740

Previews

White Background



This preview shows how the Android color 4290356382 looks on a white background.

Color Contrast Check

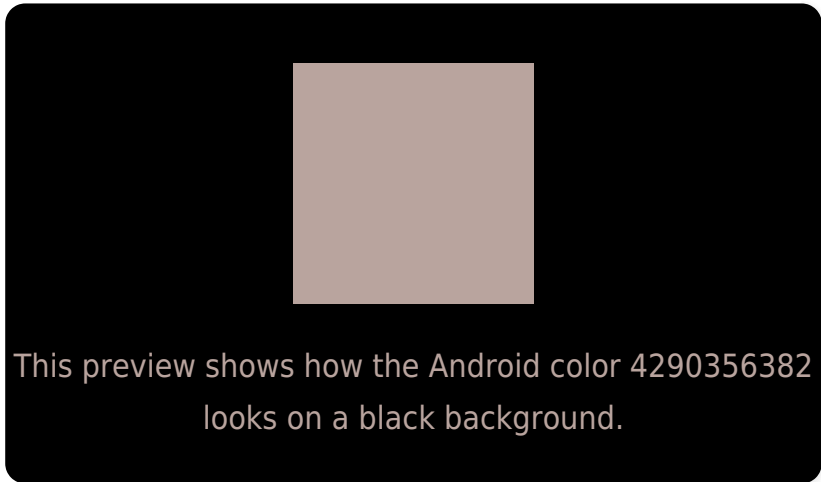
Large Text (above 18pt) WCAG AA × Fail

Any Text WCAG AA × Fail

Large Text (above 18pt) WCAG AAA × Fail

Any Text WCAG AAA × Fail

Black Background



Color Contrast Check

Large Text (above 18pt) WCAG AA ✓ Pass

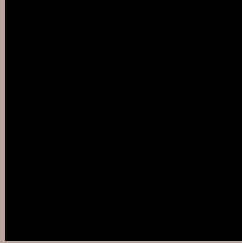
Any Text WCAG AA ✓ Pass

Large Text (above 18pt) WCAG AAA ✓ Pass

Any Text WCAG AAA ✓ Pass

If you want to check with other color combinations, try the [Color Contrast Checker](#).

Android 4290356382 Background



This preview shows how black text looks on a background with the Android color 4290356382.



This preview shows how white text looks on a background with the Android color 4290356382.

Color Blindness Simulation

Color vision deficiency is a very complex topic, and I could not describe the different causes any better than Wikipedia does, so if you want to learn more, you should check out their [article about color blindness](#).


Dichromacy



Original Color
4290356382

Protanopia
4289570976

Deuteranopia
4290618270



Tritanopia
4290486958

Trichromacy



Original Color
4290356382

Protanomaly
4289832863

Deuteranomaly
4290552734

Tritanomaly
4290421672

Monochromacy



Original Color
4290356382

Achromatopsia
4289374890

Achromatomaly
4289702054

CSS Examples

Text

The CSS property to change the color of the text to Android 4290356382 is called "color". The color property can be set on classes, ids or directly on the HTML element.

This example shows how text in the color `rgb(185, 164, 158)` looks like.

```
.text, #text, p{  
    color:rgb(185, 164, 158)  
}
```

If you want to add a text shadow in that color use the text-shadow property, you can generate a text shadow directly with our [CSS Text Shadow Generator](#).

Here you see how black text with a 4 pixel rgb(185, 164, 158) colored shadow looks like.

```
.shadow{ text-shadow: 4px 4px 2px rgb(185, 164, 158) }
```

Border

The CSS property to change the border of an element to Android 4290356382 is called "border". The border property can be set on classes, ids or directly on the HTML element.

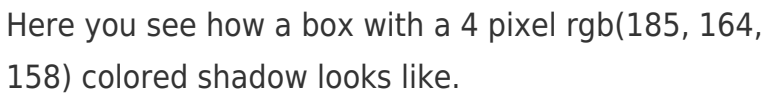
This example shows the color as border, it can be applied via the CSS property "border" or "border-color".

```
.border, #border, table{ border:4px solid rgb(185, 164, 158) }
```

If only the border color should be changed use the property `border-color`.

```
.border{ border-color:rgb(185, 164, 158) }
```

If you want to add a box shadow in that color use:



Here you see how a box with a 4 pixel `rgb(185, 164, 158)` colored shadow looks like.

```
.boxshadow{ -moz-box-shadow:4px 4px 4px 4px rgb(185, 164, 158); -webkit-box-shadow:4px 4px 4px 4px rgb(185, 164, 158); box-shadow:4px 4px 4px 4px rgb(185, 164, 158) }
```

Background

The CSS property to change the background color of an element to Android 4290356382 is called "background". The background property can be set on classes, ids or directly on the HTML element.

```
.background, #background, body{  
background: rgb(185, 164, 158) }
```

If only the background color should be changed can be used:

```
.background{ background-color: rgb(185,  
164, 158) }
```

This example shows the color as background, it is applied via the CSS property "background".

To optimize and compress your CSS code, you can use our [online CSS compressor and optimizer](#) based on csstidy. If you want to create a linear or radial gradient as background or border, check our [CSS Gradient Generator](#).

Hey! You found this booklet interesting? Support Converting Colors with the new Membership Option!

The pro membership hides all ads, plus gives you double the colors in the color bucket, and more awesome pro features!

[Learn more, Memberships starting at \\$2.50/m!](#)

**Follow me
on Twitter!**

@ConvertingColor