

Converting Colors

Android(4290357402)

Have a look what the booklet for
Android(4290357402) contains.

Android(4290357402)	3
<i>Conversions</i>	4
<i>Details</i>	6
<i>Harmonies</i>	11
<i>Previews</i>	23
<i>Color Blindness Simulation</i>	26
<i>CSS Examples</i>	29

Color

Android(4290357402)

Conversions

Conversions Part 1

Format	Color
Hex	B9A89A
RGB	185, 168, 154
RGB Percent	73%, 66%, 60%
CMY	0.2745, 0.3412, 0.3961
CMYK	0.00, 0.09, 0.17, 0.27
HSL	27°, 18%, 66%
HSV	27°, 17%, 73%
XYZ	39.8430, 40.6526, 36.3186
YIQ	171.4870, 14.6260, -0.7500

Conversions

Conversions Part 2

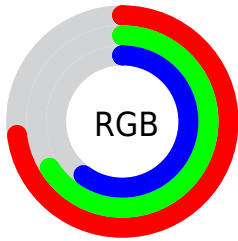
Format	Color
RYB	185, 180, 154
Decimal	12167322
CIELab	69.93, 3.81, 9.46
CIELCh	70, 10.193, 68.066
Yxy	40.6526, 0.3411, 0.3480
Android (android.graphics.Color)	4290357402 (0xFFB9A89A)
YUV	171.4870, -8.6211, 11.8509
Hunter-Lab	63.7594, -0.0352, 10.8588

Details

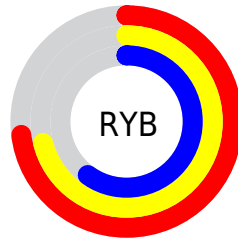
The Android color `4290357402` is a light color, and the websafe version is hex `999999`. A complement of this color would be `4288326585`, and the grayscale version is `4289506476`.

A 20% lighter version of the original color is `4294041552`, and `4286870631` is the 20% darker color. If you saturate the color by 10%, you get `4290354824`, and if you desaturate by 10%, it is `4290359981`.

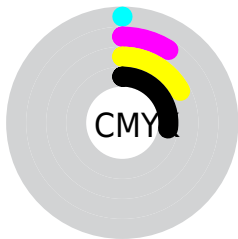
Distribution



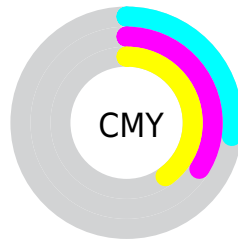
- Red (73%)
- Green (66%)
- Blue (60%)



- Red (73%)
- Yellow (71%)
- Blue (60%)



- Cyan (0%)
- Magenta (9%)
- Yellow (17%)
- Black (27%)



- Cyan (27%)
- Magenta (34%)
- Yellow (40%)

Brightness & Saturation Gradients

These gradients show how the Android color 4290357402 changes by changing the brightness by 10 percent. The first figure shows a shift by +10% for each color and the second figure -10%.

Similar to the brightness gradients but the following saturation gradients show a change of the Android color 4290357402 by changing the saturation by 10% instead.

 4290357402

 4290357402

4294967295

 4288581248

 4294041552

 4286870631

 4294966509

 4285160271

 4283581496

 4282002979

 4280621325

 4278779904

 4278190080

 4290357402

 4290357402

 4290354824

 4290359981

 4290352245

 4290362559

 4290349667

 4290365138

 4290346832

 4290367972

 4290344253

 4290370550

 4290341675

 4290373119

 4290339096

 4290375679

 4290336518

 4290378239

 4290335744

 4290379775

Harmonies

Analogous

The Analogous color harmony consists of three colors that are next to each other on the color wheel.



4290684576



4290357402



4289768345

Triad

The Triadic color harmony groups three colors that are evenly spaced from another and form a triangle on the color wheel.



4290357402



4288000173



4289767609

Complementary

The Complementary color scheme is a pair of colors which are on the opposite of each other on the color wheel.



4290357402



4288326585

Split Complementary

Split-complementary colors differ from the complementary color scheme. The scheme consists of three colors, the original color and two neighbors of the complement color.



4288981949



4290357402



4287934646

Square

The Square scheme is like the rectangle color scheme, but the four colors are evenly spaced on the color wheel.



4290357402



4288393380



4288327356



4290356658

Rectangle

The Rectangle color scheme consists of four colors that form a rectangle on the color wheel.



4290357402



4289310107



4288327356



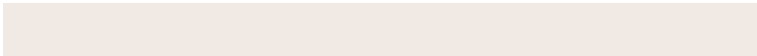
4289505723

Sweetspot

The Sweet Spot groups the original color and five complimentary colors.



4290357402



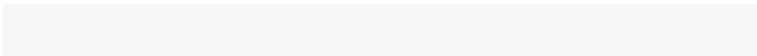
4293978596



4290353835



4286084209



4294440951



4286085240

Same Dimension

The Same Dimension uses a secret algorithm to generate beautiful new colors.



4290357402



4293973440



4290361242



4284241747



4288431616



4280028416

Inverse Universe

The Inverse Universe completely reimagines the original color for something new.



4288326585



4290829040



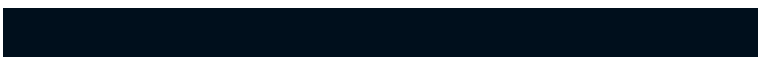
4288322745



4283652188



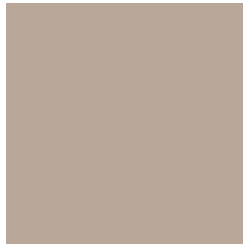
4278211996



4278193948

Previews

White Background



This preview shows how the Android color 4290357402 looks on a white background.

Color Contrast Check

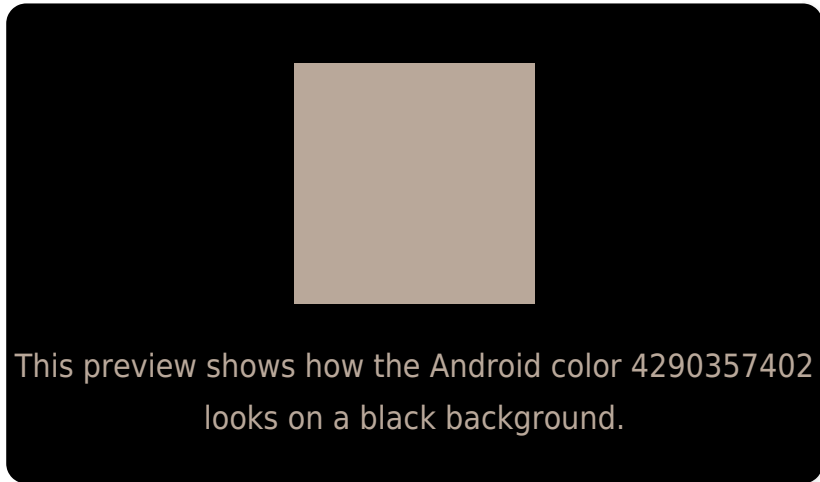
Large Text (above 18pt) WCAG AA × Fail

Any Text WCAG AA × Fail

Large Text (above 18pt) WCAG AAA × Fail

Any Text WCAG AAA × Fail

Black Background



Color Contrast Check

Large Text (above 18pt) WCAG AA ✓ Pass

Any Text WCAG AA ✓ Pass

Large Text (above 18pt) WCAG AAA ✓ Pass

Any Text WCAG AAA ✓ Pass

If you want to check with other color combinations, try the [Color Contrast Checker](#).

Android 4290357402 Background



This preview shows how black text looks on a background with the Android color 4290357402.



This preview shows how white text looks on a background with the Android color 4290357402.

Color Blindness Simulation

Color vision deficiency is a very complex topic, and I could not describe the different causes any better than Wikipedia does, so if you want to learn more, you should check out their [article about color blindness](#).

Dichromacy



Original Color


4290357402

Protanopia

4289899163

Deuteranopia

4290880923



Tritanopia
4290553265

Trichromacy



Original Color
4290357402

Protanomaly
4290095515

Deuteranomaly
4290684571

Tritanomaly
4290487977

Monochromacy



Original Color
4290357402

Achromatopsia
4289440683

Achromatomaly
4289768101

CSS Examples

Text

The CSS property to change the color of the text to Android 4290357402 is called "color". The color property can be set on classes, ids or directly on the HTML element.

This example shows how text in the color `rgb(185, 168, 154)` looks like.

```
.text, #text, p{  
    color:rgb(185, 168, 154)  
}
```

If you want to add a text shadow in that color use the text-shadow property, you can generate a text shadow directly with our [CSS Text Shadow Generator](#).

Here you see how black text with a 4 pixel rgb(185, 168, 154) colored shadow looks like.

```
.shadow{ text-shadow: 4px 4px 2px rgb(185, 168, 154) }
```

Border

The CSS property to change the border of an element to Android 4290357402 is called "border". The border property can be set on classes, ids or directly on the HTML element.

This example shows the color as border, it can be applied via the CSS property "border" or "border-color".

```
.border, #border, table{ border:4px solid rgb(185, 168, 154) }
```

If only the border color should be changed use the property `border-color`.

```
.border{ border-color:rgb(185, 168, 154) }
```

If you want to add a box shadow in that color use:

Here you see how a box with a 4 pixel `rgb(185, 168, 154)` colored shadow looks like.

```
.boxshadow{ -moz-box-shadow:4px 4px 4px 4px rgb(185, 168, 154); -webkit-box-shadow:4px 4px 4px 4px rgb(185, 168, 154); box-shadow:4px 4px 4px 4px rgb(185, 168, 154) }
```

Background

The CSS property to change the background color of an element to Android 4290357402 is called "background". The background property can be set on classes, ids or directly on the HTML element.

```
.background, #background, body{  
background: rgb(185, 168, 154) }
```

If only the background color should be changed can be used:

```
.background{ background-color: rgb(185,  
168, 154) }
```

This example shows the color as background, it is applied via the CSS property "background".

To optimize and compress your CSS code, you can use our [online CSS compressor and optimizer](#) based on csstidy. If you want to create a linear or radial gradient as background or border, check our [CSS Gradient Generator](#).

Hey! You found this booklet interesting? Support Converting Colors with the new Membership Option!

The pro membership hides all ads, plus gives you double the colors in the color bucket, and more awesome pro features!

[Learn more, Memberships starting at \\$2.50/m!](#)

**Follow me
on Twitter!**

@ConvertingColor