

# Converting Colors

Android(4290407781)

Have a look what the booklet for  
Android(4290407781) contains.

<b>Android(4290407781)</b> .....	3
<b><i>Conversions</i></b> .....	4
<b><i>Details</i></b> .....	6
<b><i>Harmonies</i></b> .....	11
<b><i>Previews</i></b> .....	23
<b><i>Color Blindness Simulation</i></b> .....	26
<b><i>CSS Examples</i></b> .....	29

**Color**

**Android(4290407781)**

# Conversions

## Conversions Part 1

<b>Format</b>	<b>Color</b>
Hex	BA6D65
RGB	186, 109, 101
RGB Percent	73%, 43%, 40%
CMY	0.2706, 0.5725, 0.6039
CMYK	0.00, 0.41, 0.46, 0.27
HSL	6°, 38%, 56%
HSV	6°, 46%, 73%
XYZ	28.0673, 22.3160, 15.1400
YIQ	131.1110, 48.4600, 13.8360

# Conversions

## Conversions Part 2

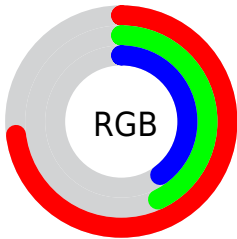
<b>Format</b>	<b>Color</b>
<b>R<sub>YB</sub></b>	186, 110, 101
Decimal	12217701
CIE Lab	54.36, 29.68, 17.70
CIE LCh	54, 34.556, 30.806
Yxy	22.3160, 0.4284, 0.3406
Android (android.graphics.Color)	4290407781 (0xFFBA6D65)
YUV	131.1110, -14.8447, 48.1377
Hunter-Lab	47.2398, 23.3854, 14.0658

# Details

The Android color **4290407781** is a dark color, and the websafe version is hex **CC6666**. A complement of this color would be **4284854970**, and the grayscale version is **4286808963**.

A 20% lighter version of the original color is **4294288024**, and **4286725174** is the 20% darker color. If you saturate the color by 10%, you get **4290403410**, and if you desaturate by 10%, it is **4290412152**.

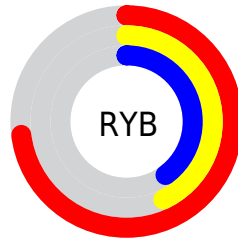
# Distribution



Red (73%)

Green (43%)

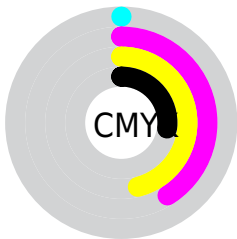
Blue (40%)



Red (73%)

Yellow (43%)

Blue (40%)

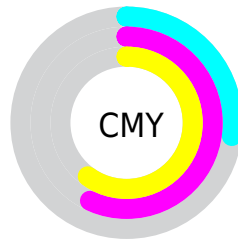


Cyan (0%)

Magenta (41%)

Yellow (46%)

Black (27%)



Cyan (27%)

Magenta (57%)

Yellow (60%)

# Brightness & Saturation Gradients

These gradients show how the Android color 4290407781 changes by changing the brightness by 10 percent. The first figure shows a shift by +10% for each color and the second figure -10%.

Similar to the brightness gradients but the following saturation gradients show a change of the Android color 4290407781 by changing the saturation by 10% instead.



 4290407781

 4290407781

4294967295

 4288566349

 4294288024

 4286725174

 4294950323

 4284884001

 4294957518

 4283173643

 4294964970

 4281466880

 4279107584

 4278190080

 4290407781

 4290407781

 4290403410

 4290412152

 4290399040

 4290416522

 4290394669

 4290420893

 4290390555

 4290425007

 4290386184

 4290429378

 4290384384

 4290433749

 4290438119

 4290442490

 4290445311

# Harmonies

## Analogous

The Analogous color harmony consists of three colors that are next to each other on the color wheel.



4290341506



4290407781



4289492559

# Triad

The Triadic color harmony groups three colors that are evenly spaced from another and form a triangle on the color wheel.



4290407781



4283535204



4283794877

# Complementary

The Complementary color scheme is a pair of colors which are on the opposite of each other on the color wheel.



4290407781



4284854970

# Split Complementary

Split-complementary colors differ from the complementary color scheme. The scheme consists of three colors, the original color and two neighbors of the complement color.



4278226357



4290407781



4280128130

# Square

The Square scheme is like the rectangle color scheme, but the four colors are evenly spaced on the color wheel.



4290407781



4285892941



4278227360



4287003317

# Rectangle

The Rectangle color scheme consists of four colors that form a rectangle on the color wheel.



4290407781



4288511303



4278227360



4282484924



# Sweetspot

The Sweet Spot groups the original color and five complimentary colors.



4290407781



4294104272



4290405811



4286212198



4294638330



4286216826



# Same Dimension

The Same Dimension uses a secret algorithm to generate beautiful new colors.



4290407781



4294081133



4290418533



4284240723



4288417536



4280025856



# Inverse Universe

The Inverse Universe completely reimagines the original color for something new.



4284854970



4285392626



4284844218



4283652956



4278226332

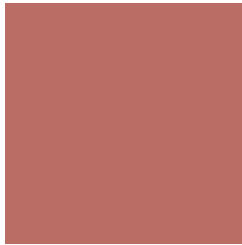


4278196508



# Previews

## White Background



This preview shows how the Android color 4290407781 looks on a white background.

## Color Contrast Check

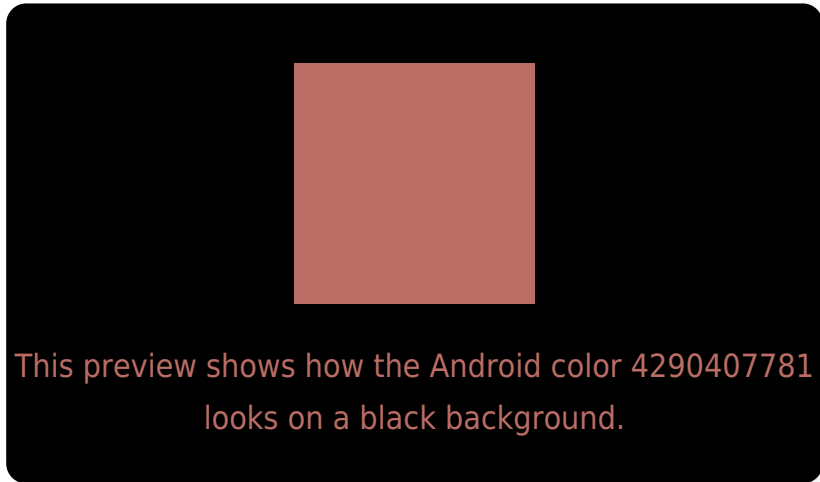
Large Text (above 18pt) WCAG AA ✓ Pass

Any Text WCAG AA ✗ Fail

Large Text (above 18pt) WCAG AAA ✗ Fail

Any Text WCAG AAA ✗ Fail

# Black Background



## Color Contrast Check

Large Text (above 18pt) WCAG AA ✓ Pass

Any Text WCAG AA ✓ Pass

Large Text (above 18pt) WCAG AAA ✓ Pass

Any Text WCAG AAA × Fail

If you want to check with other color combinations, try the [Color Contrast Checker](#).



# Android 4290407781 Background



This preview shows how black text looks on a background with the Android color 4290407781.



This preview shows how white text looks on a background with the Android color 4290407781.

# Color Blindness Simulation

Color vision deficiency is a very complex topic, and I could not describe the different causes any better than Wikipedia does, so if you want to learn more, you should check out their [article about color blindness](#).

## Dichromacy



**Original Color**  
4290407781

**Protanopia**  
4287201903

**Deuteranopia**  
4288314722



**Tritanopia**  
4290472819

# Trichromacy



**Original Color**  
4290407781

**Protanomaly**  
4288379499

**Deuteranomaly**  
4289099619

**Tritanomaly**  
4290473070

# Monochromacy



**Original Color**  
4290407781

**Achromatopsia**  
4286808963

**Achromatomaly**  
4288117624

# CSS Examples

## Text

The CSS property to change the color of the text to Android 4290407781 is called "color". The color property can be set on classes, ids or directly on the HTML element.

This example shows how text in the color `rgb(186, 109, 101)` looks like.

```
.text, #text, p{  
    color:rgb(186, 109, 101)  
}
```

If you want to add a text shadow in that color use the text-shadow property, you can generate a text shadow directly with our [CSS Text Shadow Generator](#).

Here you see how black text with a 4 pixel rgb(186, 109, 101) colored shadow looks like.

```
.shadow{ text-shadow: 4px 4px 2px rgb(186, 109, 101) }
```

## Border

The CSS property to change the border of an element to Android 4290407781 is called "border". The border property can be set on classes, ids or directly on the HTML element.

This example shows the color as border, it can be applied via the CSS property "border" or "border-color".

```
.border, #border, table{ border:4px solid rgb(186, 109, 101) }
```

If only the border color should be changed use the property `border-color`.

```
.border{ border-color:rgb(186, 109, 101) }
```

If you want to add a box shadow in that color use:

Here you see how a box with a 4 pixel `rgb(186, 109, 101)` colored shadow looks like.

```
.boxshadow{ -moz-box-shadow:4px 4px 4px  
4px rgb(186, 109, 101); -webkit-box-  
shadow:4px 4px 4px 4px rgb(186, 109, 101);  
box-shadow:4px 4px 4px 4px rgb(186, 109,  
101) }
```

# Background

The CSS property to change the background color of an element to Android 4290407781 is called "background". The background property can be set on classes, ids or directly on the HTML element.

```
.background, #background, body{  
background: rgb(186, 109, 101) }
```

If only the background color should be changed can be used:

```
.background{ background-color: rgb(186,  
109, 101) }
```

This example shows the color as background, it is applied via the CSS property "background".

To optimize and compress your CSS code, you can use our [online CSS compressor and optimizer](#) based on csstidy. If you want to create a linear or radial gradient as background or border, check our [CSS Gradient Generator](#).



Hey! You found this booklet interesting? Support Converting Colors with the new Membership Option!

The pro membership hides all ads, plus gives you double the colors in the color bucket, and more awesome pro features!

**[Learn more, Memberships starting at \\$2.50/m!](#)**

**Follow me  
on Twitter!**

@ConvertingColor