

# Converting Colors

Android(4290413693)

Have a look what the booklet for  
Android(4290413693) contains.

<b>Android(4290413693)</b> .....	3
<b><i>Conversions</i></b> .....	4
<b><i>Details</i></b> .....	6
<b><i>Harmonies</i></b> .....	11
<b><i>Previews</i></b> .....	23
<b><i>Color Blindness Simulation</i></b> .....	26
<b><i>CSS Examples</i></b> .....	29

**Color**

**Android(4290413693)**

# Conversions

## Conversions Part 1

<b>Format</b>	<b>Color</b>
Hex	BA847D
RGB	186, 132, 125
RGB Percent	73%, 52%, 49%
CMY	0.2706, 0.4824, 0.5098
CMYK	0.00, 0.29, 0.33, 0.27
HSL	7°, 31%, 61%
HSV	7°, 33%, 73%
XYZ	32.2026, 28.4223, 23.1908
YIQ	147.3480, 34.4310, 9.2710

# Conversions

## Conversions Part 2

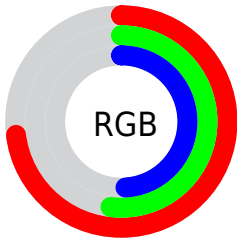
<b>Format</b>	<b>Color</b>
<b>R<sub>YB</sub></b>	186, 133, 125
Decimal	12223613
CIE <sub>Lab</sub>	60.27, 19.83, 12.06
CIE <sub>LCh</sub>	60, 23.204, 31.308
Yxy	28.4223, 0.3842, 0.3391
Android (android.graphics.Color)	4290413693 (0xFFBA847D)
YUV	147.3480, -11.0176, 33.8978
Hunter-Lab	53.3126, 14.5232, 11.5278

# Details

The Android color `4290413693` is a dark color, and the websafe version is hex `CC9999`. A complement of this color would be `4286428090`, and the grayscale version is `4287861651`.

A 20% lighter version of the original color is `4294162866`, and `4286796364` is the 20% darker color. If you saturate the color by 10%, you get `4290409578`, and if you desaturate by 10%, it is `4290417808`.

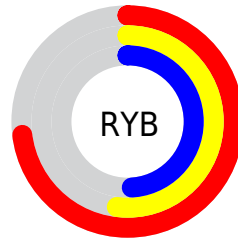
# Distribution



Red (73%)

Green (52%)

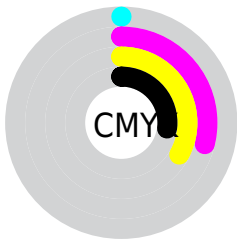
Blue (49%)



Red (73%)

Yellow (52%)

Blue (49%)

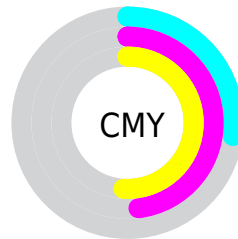


Cyan (0%)

Magenta (29%)

Yellow (33%)

Black (27%)



Cyan (27%)

Magenta (48%)

Yellow (51%)

# Brightness & Saturation Gradients

These gradients show how the Android color 4290413693 changes by changing the brightness by 10 percent. The first figure shows a shift by +10% for each color and the second figure -10%.

Similar to the brightness gradients but the following saturation gradients show a change of the Android color 4290413693 by changing the saturation by 10% instead.





4290413693



4290413693

4294967295



4288572260



4294162866



4286796364



4294956493



4285086517



4294963945



4283376672



4281798409



4280418305



4278190080



4290413693



4290413693



4290409578



4290417808

 4290405208

 4290422178

 4290401093

 4290426293

 4290396723

 4290430663

 4290392608

 4290434778

 4290388237

 4290439149

 4290385152

 4290443263

 4290445311

# Harmonies

## Analogous

The Analogous color harmony consists of three colors that are next to each other on the color wheel.



4290347665



4290413693



4289825134

# Triad

The Triadic color harmony groups three colors that are evenly spaced from another and form a triangle on the color wheel.



4290413693



4285700989



4286157754

# Complementary

The Complementary color scheme is a pair of colors which are on the opposite of each other on the color wheel.



4290413693



4286428090

# Split Complementary

Split-complementary colors differ from the complementary color scheme. The scheme consists of three colors, the original color and two neighbors of the complement color.



4284455349



4290413693



4284325265

# Square

The Square scheme is like the rectangle color scheme, but the four colors are evenly spaced on the color wheel.



4290413693



4287207022



4283735206



4288056500

# Rectangle

The Rectangle color scheme consists of four colors that form a rectangle on the color wheel.



4290413693



4289105513



4283735206



4285568441

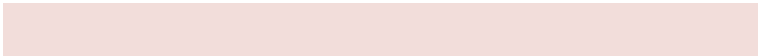


# Sweetspot

The Sweet Spot groups the original color and five complimentary colors.



4290413693



4294106586



4290411956



4286213484



4294638330



4286216826



# Same Dimension

The Same Dimension uses a secret algorithm to generate beautiful new colors.



4290413693



4294090644



4290421373



4284240979



4288418304



4280025856



# Inverse Universe

The Inverse Universe completely reimagines the original color for something new.



4286428090



4287948786



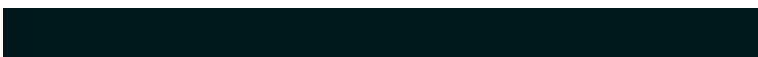
4286420410



4283652956



4278225564

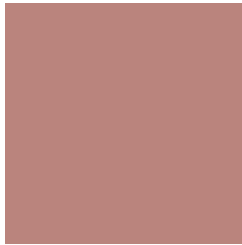


4278196508



# Previews

## White Background



This preview shows how the Android color 4290413693 looks on a white background.

## Color Contrast Check

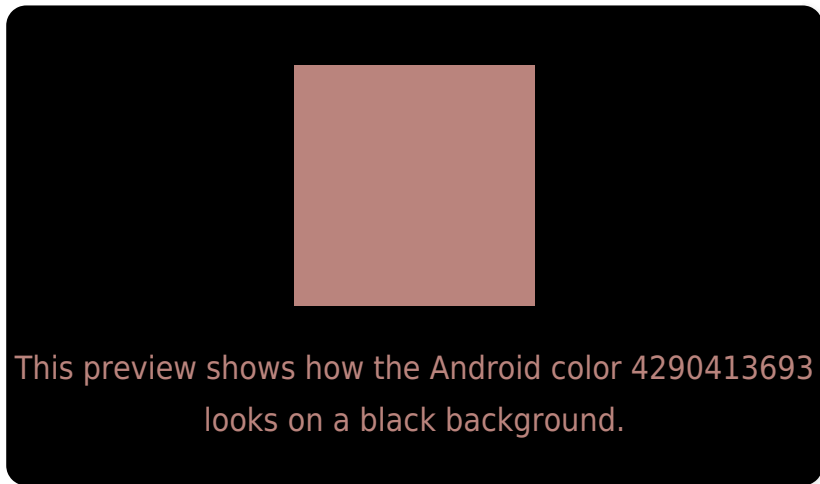
Large Text (above 18pt) WCAG AA ✓ Pass

Any Text WCAG AA ✗ Fail

Large Text (above 18pt) WCAG AAA ✗ Fail

Any Text WCAG AAA ✗ Fail

# Black Background



## Color Contrast Check

Large Text (above 18pt) WCAG AA ✓ Pass

Any Text WCAG AA ✓ Pass

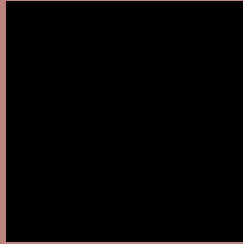
Large Text (above 18pt) WCAG AAA ✓ Pass

Any Text WCAG AAA × Fail

If you want to check with other color combinations, try the [Color Contrast Checker](#).



# Android 4290413693 Background



This preview shows how black text looks on a background with the Android color 4290413693.



This preview shows how white text looks on a background with the Android color 4290413693.

# Color Blindness Simulation

Color vision deficiency is a very complex topic, and I could not describe the different causes any better than Wikipedia does, so if you want to learn more, you should check out their [article about color blindness](#).

## Dichromacy





**Tritanopia**  
4290478732

# Trichromacy



**Original Color**  
4290413693

**Protanomaly**  
4288973953

**Deuteranomaly**  
4289628540

**Tritanomaly**  
4290478983

# Monochromacy



**Original Color**  
4290413693

**Achromatopsia**  
4287861651

**Achromatomaly**  
4288777867

# CSS Examples

## Text

The CSS property to change the color of the text to Android 4290413693 is called "color". The color property can be set on classes, ids or directly on the HTML element.

This example shows how text in the color `rgb(186, 132, 125)` looks like.

```
.text, #text, p{  
    color:rgb(186, 132, 125)  
}
```

If you want to add a text shadow in that color use the text-shadow property, you can generate a text shadow directly with our [CSS Text Shadow Generator](#).

Here you see how black text with a 4 pixel rgb(186, 132, 125) colored shadow looks like.

```
.shadow{ text-shadow: 4px 4px 2px rgb(186, 132, 125) }
```

## Border

The CSS property to change the border of an element to Android 4290413693 is called "border". The border property can be set on classes, ids or directly on the HTML element.

This example shows the color as border, it can be applied via the CSS property "border" or "border-color".

```
.border, #border, table{ border:4px solid rgb(186, 132, 125) }
```

If only the border color should be changed use the property `border-color`.

```
.border{ border-color:rgb(186, 132, 125) }
```

If you want to add a box shadow in that color use:

Here you see how a box with a 4 pixel `rgb(186, 132, 125)` colored shadow looks like.

```
.boxshadow{ -moz-box-shadow:4px 4px 4px  
4px rgb(186, 132, 125); -webkit-box-  
shadow:4px 4px 4px 4px rgb(186, 132, 125);  
box-shadow:4px 4px 4px 4px rgb(186, 132,  
125) }
```

# Background

The CSS property to change the background color of an element to Android 4290413693 is called "background". The background property can be set on classes, ids or directly on the HTML element.

```
.background, #background, body{  
background: rgb(186, 132, 125) }
```

If only the background color should be changed can be used:

```
.background{ background-color: rgb(186,  
132, 125) }
```

This example shows the color as background, it is applied via the CSS property "background".

To optimize and compress your CSS code, you can use our [online CSS compressor and optimizer](#) based on csstidy. If you want to create a linear or radial gradient as background or border, check our [CSS Gradient Generator](#).



Hey! You found this booklet interesting? Support Converting Colors with the new Membership Option!

The pro membership hides all ads, plus gives you double the colors in the color bucket, and more awesome pro features!

**[Learn more, Memberships starting at \\$2.50/m!](#)**

**Follow me  
on Twitter!**

@ConvertingColor