

Converting Colors

Android(4290415247)

Have a look what the booklet for
Android(4290415247) contains.

Android(4290415247)	3
<i>Conversions</i>	4
<i>Details</i>	6
<i>Harmonies</i>	11
<i>Previews</i>	23
<i>Color Blindness Simulation</i>	26
<i>CSS Examples</i>	29

Color

Android(4290415247)

Conversions

Conversions Part 1

Format	Color
Hex	BA8A8F
RGB	186, 138, 143
RGB Percent	73%, 54%, 56%
CMY	0.2706, 0.4588, 0.4392
CMYK	0.00, 0.26, 0.23, 0.27
HSL	354°, 26%, 64%
HSV	354°, 26%, 73%
XYZ	34.2961, 30.5992, 30.0852
YIQ	152.9220, 27.0030, 11.7310

Conversions

Conversions Part 2

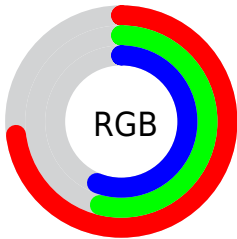
Format	Color
RYB	186, 138, 143
Decimal	12225167
CIELab	62.17, 19.03, 4.51
CIElCh	62, 19.559, 13.323
Yxy	30.5992, 0.3611, 0.3222
Android (android.graphics.Color)	4290415247 (0xFFBA8A8F)
YUV	152.9220, -4.8915, 29.0094
Hunter-Lab	55.3166, 13.8654, 6.4753

Details

The Android color `4290415247` is a light color, and the websafe version is hex `CC9999`. A complement of this color would be `4287281845`, and the grayscale version is `4288256409`.

A 20% lighter version of the original color is `4294164677`, and `4286863453` is the 20% darker color. If you saturate the color by 10%, you get `4290410366`, and if you desaturate by 10%, it is `4290420128`.

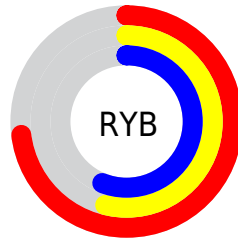
Distribution



Red (73%)

Green (54%)

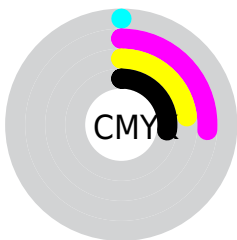
Blue (56%)



Red (73%)

Yellow (54%)

Blue (56%)

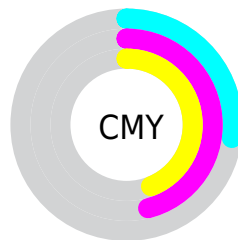


Cyan (0%)

Magenta (26%)

Yellow (23%)

Black (27%)



Cyan (27%)

Magenta (46%)

Yellow (44%)

Brightness & Saturation Gradients

These gradients show how the Android color 4290415247 changes by changing the brightness by 10 percent. The first figure shows a shift by +10% for each color and the second figure -10%.

Similar to the brightness gradients but the following saturation gradients show a change of the Android color 4290415247 by changing the saturation by 10% instead.



4290415247



4290415247

4294967295



4288639093



4294164677



4286863453



4294958305



4285153349



4294965501



4283509039



4281930778



4280614912



4278190080



4290415247



4290415247



4290410366



4290420128

 4290405742

 4290424752

 4290400861

 4290429633

 4290396236

 4290434258

 4290391356

 4290439138

 4290386475

 4290444019

 4290381850

 4290445311

 4290379795

Harmonies

Analogous

The Analogous color harmony consists of three colors that are next to each other on the color wheel.



4289956769



4290415247



4290219391

Triad

The Triadic color harmony groups three colors that are evenly spaced from another and form a triangle on the color wheel.



4290415247



4287143037



4285963191

Complementary

The Complementary color scheme is a pair of colors which are on the opposite of each other on the color wheel.



4290415247



4287281845

Split Complementary

Split-complementary colors differ from the complementary color scheme. The scheme consists of three colors, the original color and two neighbors of the complement color.



4284981165



4290415247



4285898636

Square

The Square scheme is like the rectangle color scheme, but the four colors are evenly spaced on the color wheel.



4290415247



4288387188



4285046942



4287403448

Rectangle

The Rectangle color scheme consists of four colors that form a rectangle on the color wheel.



4290415247



4289826936



4285046942



4285570229

Sweetspot

The Sweet Spot groups the original color and five complimentary colors.



4290415247



4294107105



4290022074



4286213743



4294638330



4286216826

Same Dimension

The Same Dimension uses a secret algorithm to generate beautiful new colors.



4290415247



4294092719



4290419850



4284240724



4288413712



4280025091

Inverse Universe

The Inverse Universe completely reimagines the original color for something new.



4290415247



4294092719



4287277242



4284240724



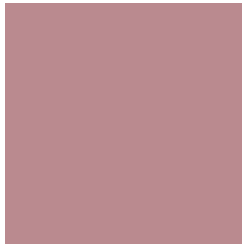
4288413712



4280025091

Previews

White Background



This preview shows how the Android color 4290415247 looks on a white background.

Color Contrast Check

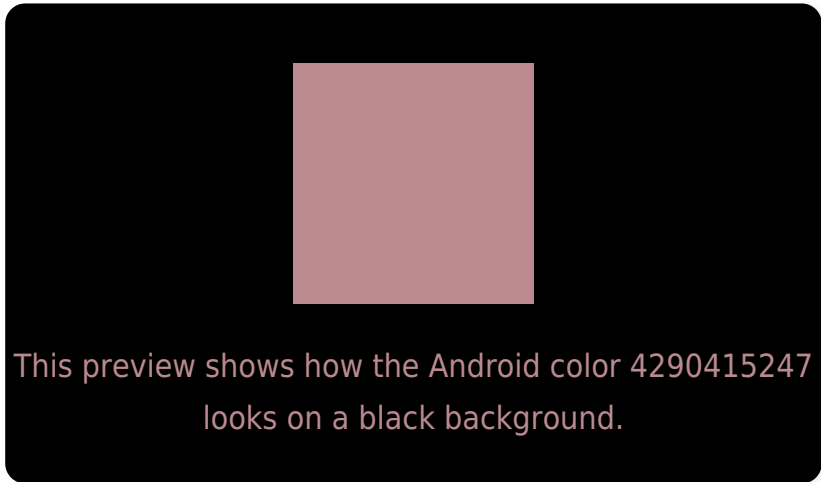
Large Text (above 18pt) WCAG AA × Fail

Any Text WCAG AA × Fail

Large Text (above 18pt) WCAG AAA × Fail

Any Text WCAG AAA × Fail

Black Background



Color Contrast Check

Large Text (above 18pt) WCAG AA ✓ Pass

Any Text WCAG AA ✓ Pass

Large Text (above 18pt) WCAG AAA ✓ Pass

Any Text WCAG AAA ✓ Pass

If you want to check with other color combinations, try the [Color Contrast Checker](#).

Android 4290415247 Background



This preview shows how black text looks on a background with the Android color 4290415247.



This preview shows how white text looks on a background with the Android color 4290415247.

Color Blindness Simulation

Color vision deficiency is a very complex topic, and I could not describe the different causes any better than Wikipedia does, so if you want to learn more, you should check out their [article about color blindness](#).

Dichromacy



Original Color
4290415247

Protanopia
4288255638

Deuteranopia
4289237390



Tritanopia
4290480532

Trichromacy



Original Color
4290415247

Protanomaly
4289041043

Deuteranomaly
4289695374

Tritanomaly
4290480530

Monochromacy



Original Color
4290415247

Achromatopsia
4288256409

Achromatomaly
4289041557

CSS Examples

Text

The CSS property to change the color of the text to Android 4290415247 is called "color". The color property can be set on classes, ids or directly on the HTML element.

This example shows how text in the color `rgb(186, 138, 143)` looks like.

```
.text, #text, p{  
    color:rgb(186, 138, 143)  
}
```

If you want to add a text shadow in that color use the text-shadow property, you can generate a text shadow directly with our [CSS Text Shadow Generator](#).

Here you see how black text with a 4 pixel rgb(186, 138, 143) colored shadow looks like.

```
.shadow{ text-shadow: 4px 4px 2px rgb(186, 138, 143) }
```

Border

The CSS property to change the border of an element to Android 4290415247 is called "border". The border property can be set on classes, ids or directly on the HTML element.

This example shows the color as border, it can be applied via the CSS property "border" or "border-color".

```
.border, #border, table{ border:4px solid rgb(186, 138, 143) }
```

If only the border color should be changed use the property `border-color`.

```
.border{ border-color:rgb(186, 138, 143) }
```

If you want to add a box shadow in that color use:

Here you see how a box with a 4 pixel `rgb(186, 138, 143)` colored shadow looks like.

```
.boxshadow{ -moz-box-shadow:4px 4px 4px  
4px rgb(186, 138, 143); -webkit-box-  
shadow:4px 4px 4px 4px rgb(186, 138, 143);  
box-shadow:4px 4px 4px 4px rgb(186, 138,  
143) }
```

Background

The CSS property to change the background color of an element to Android 4290415247 is called "background". The background property can be set on classes, ids or directly on the HTML element.

```
.background, #background, body{  
background: rgb(186, 138, 143) }
```

If only the background color should be changed can be used:

```
.background{ background-color: rgb(186,  
138, 143) }
```

This example shows the color as background, it is applied via the CSS property "background".

To optimize and compress your CSS code, you can use our [online CSS compressor and optimizer](#) based on csstidy. If you want to create a linear or radial gradient as background or border, check our [CSS Gradient Generator](#).

Hey! You found this booklet interesting? Support Converting Colors with the new Membership Option!

The pro membership hides all ads, plus gives you double the colors in the color bucket, and more awesome pro features!

[Learn more, Memberships starting at \\$2.50/m!](#)

**Follow me
on Twitter!**

@ConvertingColor