

Converting Colors

Android(4290421125)

Have a look what the booklet for
Android(4290421125) contains.

Android(4290421125)	3
<i>Conversions</i>	4
<i>Details</i>	6
<i>Harmonies</i>	11
<i>Previews</i>	23
<i>Color Blindness Simulation</i>	26
<i>CSS Examples</i>	29

Color

Android(4290421125)

Conversions

Conversions Part 1

Format	Color
Hex	BAA185
RGB	186, 161, 133
RGB Percent	73%, 63%, 52%
CMY	0.2706, 0.3686, 0.4784
CMYK	0.00, 0.13, 0.28, 0.27
HSL	32°, 28%, 63%
HSV	32°, 28%, 73%
XYZ	37.2282, 37.6223, 27.4900
YIQ	165.2830, 23.8880, -3.4080

Conversions

Conversions Part 2

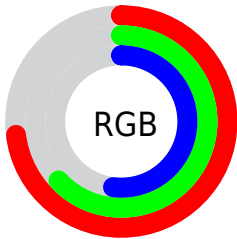
Format	Color
RYB	180, 186, 133
Decimal	12231045
CIELab	67.74, 4.88, 17.98
CIELCh	68, 18.625, 74.818
Yxy	37.6223, 0.3638, 0.3676
Android (android.graphics.Color)	4290421125 (0xFFBAA185)
YUV	165.2830, -15.9155, 18.1688
Hunter-Lab	61.3370, 0.9999, 16.3634

Details

The Android color `4290421125` is a light color, and the websafe version is hex `999966`. A complement of this color would be `4286947002`, and the grayscale version is `4289045925`.

A 20% lighter version of the original color is `4294170810`, and `4286869075` is the 20% darker color. If you saturate the color by 10%, you get `4290418802`, and if you desaturate by 10%, it is `4290423448`.

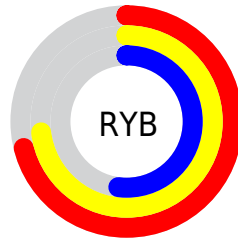
Distribution



Red (73%)

Green (63%)

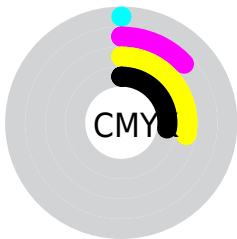
Blue (52%)



Red (71%)

Yellow (73%)

Blue (52%)

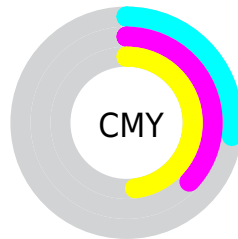


Cyan (0%)

Magenta (13%)

Yellow (28%)

Black (27%)



Cyan (27%)

Magenta (37%)

Yellow (48%)

Brightness & Saturation Gradients

These gradients show how the Android color 4290421125 changes by changing the brightness by 10 percent. The first figure shows a shift by +10% for each color and the second figure -10%.

Similar to the brightness gradients but the following saturation gradients show a change of the Android color 4290421125 by changing the saturation by 10% instead.



4290421125



4290421125

4294967295



4288644972



4294170810



4286869075



4294964438



4285158716



4294967282



4283514406



4281935889



4280488960



4278190080



4290421125



4290421125



4290418802



4290423448

 4290416480

 4290425770

 4290414413

 4290427837

 4290412091

 4290430159

 4290409768

 4290432482

 4290407445

 4290434805

 4290405379

 4290436863

 4290404864

 4290439167

 4290441471

Harmonies

Analogous

The Analogous color harmony consists of three colors that are next to each other on the color wheel.



4291140750



4290421125



4289308549

Triad

The Triadic color harmony groups three colors that are evenly spaced from another and form a triangle on the color wheel.



4290421125



4286164909



4289896125

Complementary

The Complementary color scheme is a pair of colors which are on the opposite of each other on the color wheel.



4290421125



4286947002

Split Complementary

Split-complementary colors differ from the complementary color scheme. The scheme consists of three colors, the original color and two neighbors of the complement color.



4288521413



4290421125



4286164412

Square

The Square scheme is like the rectangle color scheme, but the four colors are evenly spaced on the color wheel.



4290421125



4286885532



4287080901



4290943662

Rectangle

The Rectangle color scheme consists of four colors that form a rectangle on the color wheel.



4290421125



4288522889



4287080901



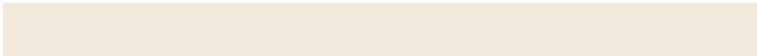
4289437889

Sweetspot

The Sweet Spot groups the original color and five complimentary colors.



4290421125



4294109404



4290413983



4286215277



4294638330



4286216826

Same Dimension

The Same Dimension uses a secret algorithm to generate beautiful new colors.



4290421125



4294101920



4290361989



4284241747



4288434688



4280028928

Inverse Universe

The Inverse Universe completely reimagines the original color for something new.



4286947002



4288727026



4287006138



4283651932



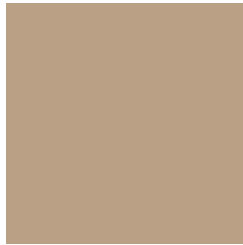
4278208924



4278193436

Previews

White Background



This preview shows how the Android color 4290421125 looks on a white background.

Color Contrast Check

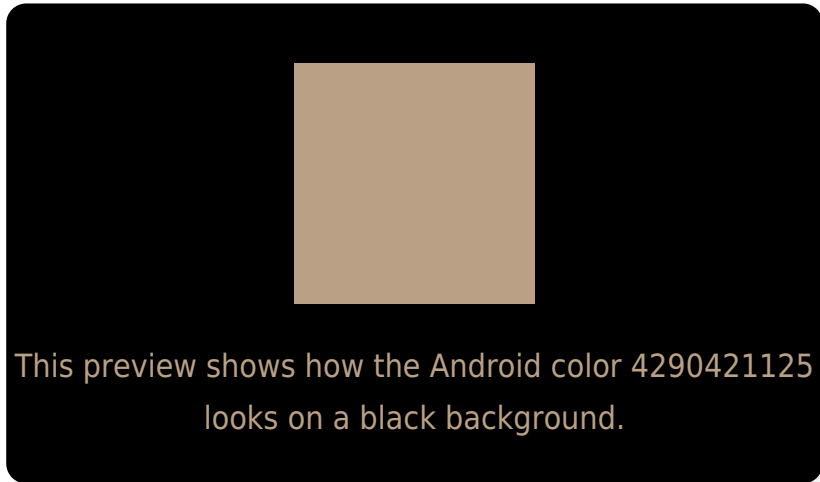
Large Text (above 18pt) WCAG AA × Fail

Any Text WCAG AA × Fail

Large Text (above 18pt) WCAG AAA × Fail

Any Text WCAG AAA × Fail

Black Background



Color Contrast Check

Large Text (above 18pt) WCAG AA ✓ Pass

Any Text WCAG AA ✓ Pass

Large Text (above 18pt) WCAG AAA ✓ Pass

Any Text WCAG AAA ✓ Pass

If you want to check with other color combinations, try the [Color Contrast Checker](#).

Android 4290421125 Background



This preview shows how black text looks on a background with the Android color 4290421125.



This preview shows how white text looks on a background with the Android color 4290421125.

Color Blindness Simulation

Color vision deficiency is a very complex topic, and I could not describe the different causes any better than Wikipedia does, so if you want to learn more, you should check out their [article about color blindness](#).

Dichromacy



Original Color

4290421125

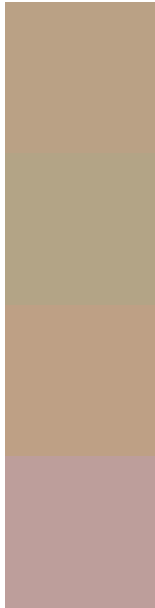
Protanopia

4289701255

Deuteranopia

4290813829

Trichromacy



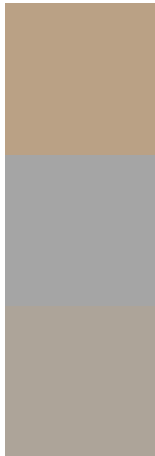
Original Color
4290421125

Protanomaly
4289963142

Deuteranomaly
4290683013

Tritanomaly
4290616987

Monochromacy



Original Color
4290421125

Achromatopsia
4289045925

Achromatomaly
4289569945

CSS Examples

Text

The CSS property to change the color of the text to Android 4290421125 is called "color". The color property can be set on classes, ids or directly on the HTML element.

This example shows how text in the color `rgb(186, 161, 133)` looks like.

```
.text, #text, p{  
    color:rgb(186, 161, 133)  
}
```

If you want to add a text shadow in that color use the text-shadow property, you can generate a text shadow directly with our [CSS Text Shadow Generator](#).

Here you see how black text with a 4 pixel rgb(186, 161, 133) colored shadow looks like.

```
.shadow{ text-shadow: 4px 4px 2px rgb(186, 161, 133) }
```

Border

The CSS property to change the border of an element to Android 4290421125 is called "border". The border property can be set on classes, ids or directly on the HTML element.

This example shows the color as border, it can be applied via the CSS property "border" or "border-color".

```
.border, #border, table{ border:4px solid rgb(186, 161, 133) }
```

If only the border color should be changed use the property `border-color`.

```
.border{ border-color:rgb(186, 161, 133) }
```

If you want to add a box shadow in that color use:

Here you see how a box with a 4 pixel `rgb(186, 161, 133)` colored shadow looks like.

```
.boxshadow{ -moz-box-shadow:4px 4px 4px  
4px rgb(186, 161, 133); -webkit-box-  
shadow:4px 4px 4px 4px rgb(186, 161, 133);  
box-shadow:4px 4px 4px 4px rgb(186, 161,  
133) }
```

Background

The CSS property to change the background color of an element to Android 4290421125 is called "background". The background property can be set on classes, ids or directly on the HTML element.

```
.background, #background, body{  
background: rgb(186, 161, 133) }
```

If only the background color should be changed can be used:

```
.background{ background-color: rgb(186,  
161, 133) }
```

This example shows the color as background, it is applied via the CSS property "background".

To optimize and compress your CSS code, you can use our [online CSS compressor and optimizer](#) based on csstidy. If you want to create a linear or radial gradient as background or border, check our [CSS Gradient Generator](#).

Hey! You found this booklet interesting? Support Converting Colors with the new Membership Option!

The pro membership hides all ads, plus gives you double the colors in the color bucket, and more awesome pro features!

[Learn more, Memberships starting at \\$2.50/m!](#)

**Follow me
on Twitter!**

@ConvertingColor