

# Converting Colors

Android(4290421667)

Have a look what the booklet for  
Android(4290421667) contains.

<b>Android(4290421667)</b> .....	3
<b><i>Conversions</i></b> .....	4
<b><i>Details</i></b> .....	6
<b><i>Harmonies</i></b> .....	11
<b><i>Previews</i></b> .....	23
<b><i>Color Blindness Simulation</i></b> .....	26
<b><i>CSS Examples</i></b> .....	29

# **Color**

**Android(4290421667)**

# Conversions

## Conversions Part 1

Format	Color
Hex	BAA3A3
RGB	186, 163, 163
RGB Percent	73%, 64%, 64%
CMY	0.2706, 0.3608, 0.3608
CMYK	0.00, 0.12, 0.12, 0.27
HSL	0°, 14%, 68%
HSV	0°, 12%, 73%
XYZ	39.9578, 39.2778, 40.1257
YIQ	169.8770, 13.7080, 4.8760

# Conversions

## Conversions Part 2

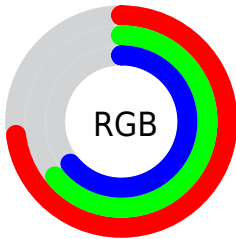
Format	Color
<a href="#">RYB</a>	<a href="#">186, 163, 163</a>
Decimal	<a href="#">12231587</a>
CIELab	<a href="#">68.95, 8.39, 3.08</a>
CIELCh	<a href="#">69, 8.937, 20.156</a>
Yxy	<a href="#">39.2778, 0.3348, 0.3291</a>
Android (android.graphics.Color)	<a href="#">4290421667</a> ( <a href="#">0xFFBAA3A3</a> )
YUV	<a href="#">169.8770, -3.3904, 14.1399</a>
Hunter-Lab	<a href="#">62.6720, 4.1300, 5.9101</a>

# Details

The Android color `4290421667` is a light color, and the websafe version is hex `999999`. A complement of this color would be `4288920250`, and the grayscale version is `4289374890`.

A 20% lighter version of the original color is `4294105818`, and `4286934895` is the 20% darker color. If you saturate the color by 10%, you get `4290416784`, and if you desaturate by 10%, it is `4290426550`.

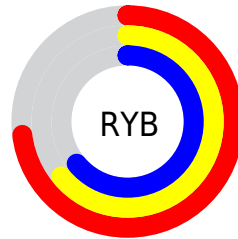
# Distribution



Red (73%)

Green (64%)

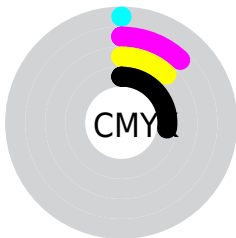
Blue (64%)



Red (73%)

Yellow (64%)

Blue (64%)

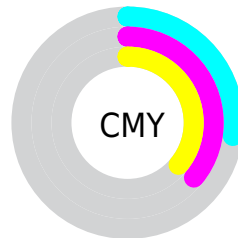


Cyan (0%)

Magenta (12%)

Yellow (12%)

Black (27%)



Cyan (27%)

Magenta (36%)

Yellow (36%)

# Brightness & Saturation Gradients

These gradients show how the Android color 4290421667 changes by changing the brightness by 10 percent. The first figure shows a shift by +10% for each color and the second figure -10%.

Similar to the brightness gradients but the following saturation gradients show a change of the Android color 4290421667 by changing the saturation by 10% instead.





4290421667



4290421667

4294967295



4288645513



4294105818



4286934895



4294964982



4285224791



4283646016



4282067498



4280620310



4278845440



4278190080



4290421667



4290421667

 4290416784

 4290426550

 4290412158

 4290431176

 4290407275

 4290436059

 4290402649

 4290440685

 4290397766

 4290445311

 4290392883

 4290388257

 4290383374

 4290379776

# Harmonies

## Analogous

The Analogous color harmony consists of three colors that are next to each other on the color wheel.



4290225067



4290421667



4290290844

# Triad

The Triadic color harmony groups three colors that are evenly spaced from another and form a triangle on the color wheel.



4290421667



4288720030



4288522936

# Complementary

The Complementary color scheme is a pair of colors which are on the opposite of each other on the color wheel.



4290421667



4288920250

# Split Complementary

Split-complementary colors differ from the complementary color scheme. The scheme consists of three colors, the original color and two neighbors of the complement color.



4288064692



4290421667



4288196005

# Square

The Square scheme is like the rectangle color scheme, but the four colors are evenly spaced on the color wheel.



4290421667



4289309081



4287933869



4289177527

# Rectangle

The Rectangle color scheme consists of four colors that form a rectangle on the color wheel.



4290421667



4290029209



4287933869



4288326583

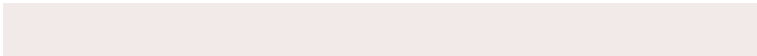


# Sweetspot

The Sweet Spot groups the original color and five complimentary colors.



4290421667



4294109673



4290421690



4286215284



4294638330



4286216826



# Same Dimension

The Same Dimension uses a secret algorithm to generate beautiful new colors.



4290421667



4294102734



4290424483



4284240723



4288413696



4280025088



# Inverse Universe

The Inverse Universe completely reimagines the original color for something new.



4288920250



4291752690



4288917178



4283653212



4278230172

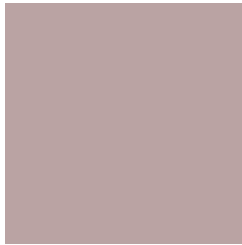


4278197276



# Previews

## White Background



This preview shows how the Android color 4290421667 looks on a white background.

## Color Contrast Check

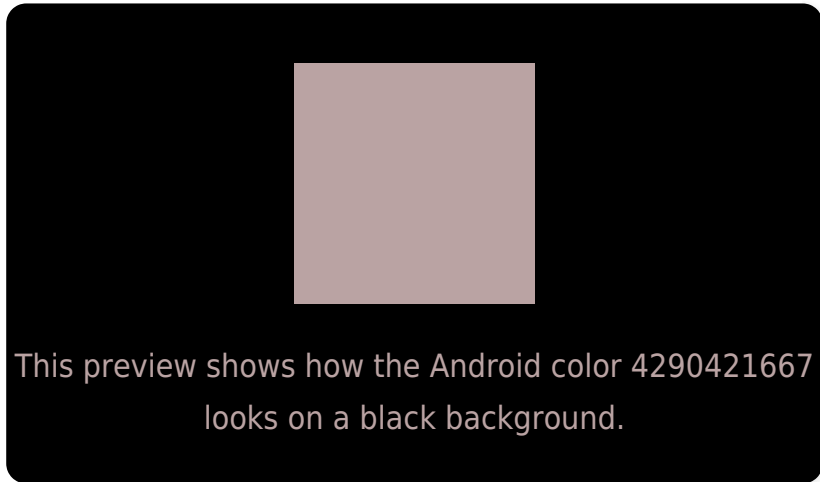
Large Text (above 18pt) WCAG AA × Fail

Any Text WCAG AA × Fail

Large Text (above 18pt) WCAG AAA × Fail

Any Text WCAG AAA × Fail

# Black Background



## Color Contrast Check

Large Text (above 18pt) WCAG AA ✓ Pass

Any Text WCAG AA ✓ Pass

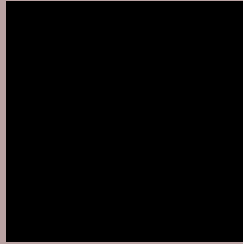
Large Text (above 18pt) WCAG AAA ✓ Pass

Any Text WCAG AAA ✓ Pass

If you want to check with other color combinations, try the [Color Contrast Checker](#).



# Android 4290421667 Background



This preview shows how black text looks on a background with the Android color 4290421667.



This preview shows how white text looks on a background with the Android color 4290421667.

# Color Blindness Simulation

Color vision deficiency is a very complex topic, and I could not describe the different causes any better than Wikipedia does, so if you want to learn more, you should check out their [article about color blindness](#).

## Dichromacy



**Original Color**  
4290421667

**Protanopia**  
4289505446

**Deuteranopia**  
4290487203



**Tritanopia**  
4290486702

# Trichromacy



**Original Color**  
4290421667

**Protanomaly**  
4289832613

**Deuteranomaly**  
4290487203

**Tritanomaly**  
4290486954

# Monochromacy



**Original Color**  
4290421667

**Achromatopsia**  
4289374890

**Achromatomaly**  
4289767335

# CSS Examples

## Text

The CSS property to change the color of the text to Android 4290421667 is called "color". The color property can be set on classes, ids or directly on the HTML element.

This example shows how text in the color `rgb(186, 163, 163)` looks like.

```
.text, #text, p{  
    color:rgb(186, 163, 163)  
}
```

If you want to add a text shadow in that color use the text-shadow property, you can generate a text shadow directly with our [CSS Text Shadow Generator](#).

Here you see how black text with a 4 pixel rgb(186, 163, 163) colored shadow looks like.

```
.shadow{ text-shadow: 4px 4px 2px rgb(186, 163, 163) }
```

## Border

The CSS property to change the border of an element to Android 4290421667 is called "border". The border property can be set on classes, ids or directly on the HTML element.

This example shows the color as border, it can be applied via the CSS property "border" or "border-color".

```
.border, #border, table{ border:4px solid rgb(186, 163, 163) }
```

If only the border color should be changed use the property `border-color`.

```
.border{ border-color:rgb(186, 163, 163) }
```

If you want to add a box shadow in that color use:

Here you see how a box with a 4 pixel `rgb(186, 163, 163)` colored shadow looks like.

```
.boxshadow{ -moz-box-shadow:4px 4px 4px  
4px rgb(186, 163, 163); -webkit-box-  
shadow:4px 4px 4px 4px rgb(186, 163, 163);  
box-shadow:4px 4px 4px 4px rgb(186, 163,  
163) }
```

# Background

The CSS property to change the background color of an element to Android 4290421667 is called "background". The background property can be set on classes, ids or directly on the HTML element.

```
.background, #background, body{  
background: rgb(186, 163, 163) }
```

If only the background color should be changed can be used:

```
.background{ background-color: rgb(186,  
163, 163) }
```

This example shows the color as background, it is applied via the CSS property "background".

To optimize and compress your CSS code, you can use our [online CSS compressor and optimizer](#) based on csstidy. If you want to create a linear or radial gradient as background or border, check our [CSS Gradient Generator](#).



Hey! You found this booklet interesting? Support Converting Colors with the new Membership Option!

The pro membership hides all ads, plus gives you double the colors in the color bucket, and more awesome pro features!

**[Learn more, Memberships starting at \\$2.50/m!](#)**

**Follow me  
on Twitter!**

@ConvertingColor