

Converting Colors

Android(4290421926)

Have a look what the booklet for
Android(4290421926) contains.

Android(4290421926)	3
<i>Conversions</i>	4
<i>Details</i>	6
<i>Harmonies</i>	11
<i>Previews</i>	23
<i>Color Blindness Simulation</i>	26
<i>CSS Examples</i>	29

Color

Android(4290421926)

Conversions

Conversions Part 1

Format	Color
Hex	BAA4A6
RGB	186, 164, 166
RGB Percent	73%, 64%, 65%
CMY	0.2706, 0.3569, 0.3490
CMYK	0.00, 0.12, 0.11, 0.27
HSL	355°, 14%, 69%
HSV	355°, 12%, 73%
XYZ	40.4081, 39.7432, 41.6179
YIQ	170.8060, 12.4700, 5.2860

Conversions

Conversions Part 2

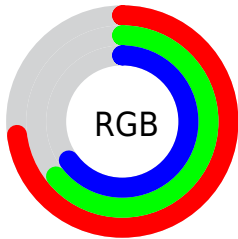
Format	Color
RYB	186, 164, 166
Decimal	12231846
CIELab	69.29, 8.35, 1.90
CIElCh	69, 8.565, 12.816
Yxy	39.7432, 0.3318, 0.3264
Android (android.graphics.Color)	4290421926 (0xFFBAA4A6)
YUV	170.8060, -2.3694, 13.3251
Hunter-Lab	63.0422, 4.0891, 4.9887

Details

The Android color `4290421926` is a light color, and the websafe version is hex `999999`. A complement of this color would be `4288985784`, and the grayscale version is `4289440683`.

A 20% lighter version of the original color is `4294106077`, and `4286935154` is the 20% darker color. If you saturate the color by 10%, you get `4290417045`, and if you desaturate by 10%, it is `4290426807`.

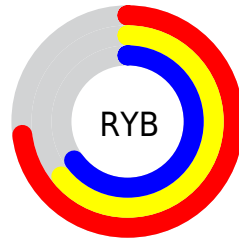
Distribution



Red (73%)

Green (64%)

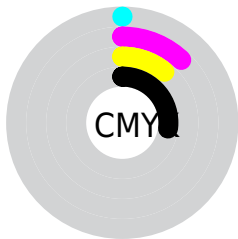
Blue (65%)



Red (73%)

Yellow (64%)

Blue (65%)

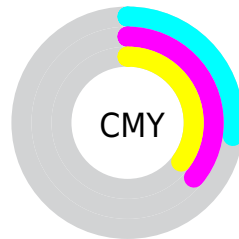


Cyan (0%)

Magenta (12%)

Yellow (11%)

Black (27%)



Cyan (27%)

Magenta (36%)

Yellow (35%)

Brightness & Saturation Gradients

These gradients show how the Android color 4290421926 changes by changing the brightness by 10 percent. The first figure shows a shift by +10% for each color and the second figure -10%.

Similar to the brightness gradients but the following saturation gradients show a change of the Android color 4290421926 by changing the saturation by 10% instead.



4290421926



4290421926

4294967295



4288645772



4294106077



4286935154



4294965242



4285225050



4283646018



4282133036



4280686104



4279042048



4278190080



4290421926



4290421926

 4290417045

 4290426807

 4290412420

 4290431432

 4290407539

 4290436313

 4290402914

 4290440938

 4290398033

 4290445307

 4290393153

 4290445311

 4290388528

 4290383647

 4290379793

Harmonies

Analogous

The Analogous color harmony consists of three colors that are next to each other on the color wheel.



4290159790



4290421926



4290356639

Triad

The Triadic color harmony groups three colors that are evenly spaced from another and form a triangle on the color wheel.



4290421926



4288916638



4288457656

Complementary

The Complementary color scheme is a pair of colors which are on the opposite of each other on the color wheel.



4290421926



4288985784

Split Complementary

Split-complementary colors differ from the complementary color scheme. The scheme consists of three colors, the original color and two neighbors of the complement color.



4288130483



4290421926



4288392612

Square

The Square scheme is like the rectangle color scheme, but the four colors are evenly spaced on the color wheel.



4290421926



4289505946



4288130732



4289046968

Rectangle

The Rectangle color scheme consists of four colors that form a rectangle on the color wheel.



4290421926



4290160284



4288130732



4288326839

Sweetspot

The Sweet Spot groups the original color and five complimentary colors.



4290421926



4294109673



4290290874



4286215285



4294638330



4286216826

Same Dimension

The Same Dimension uses a secret algorithm to generate beautiful new colors.



4290421926



4294103251



4290424228



4284240723



4288413710



4280025091

Inverse Universe

The Inverse Universe completely reimagines the original color for something new.



4290421926



4294103251



4288983482



4284240723



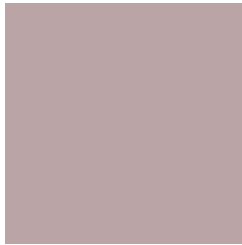
4288413710



4280025091

Previews

White Background



This preview shows how the Android color 4290421926 looks on a white background.

Color Contrast Check

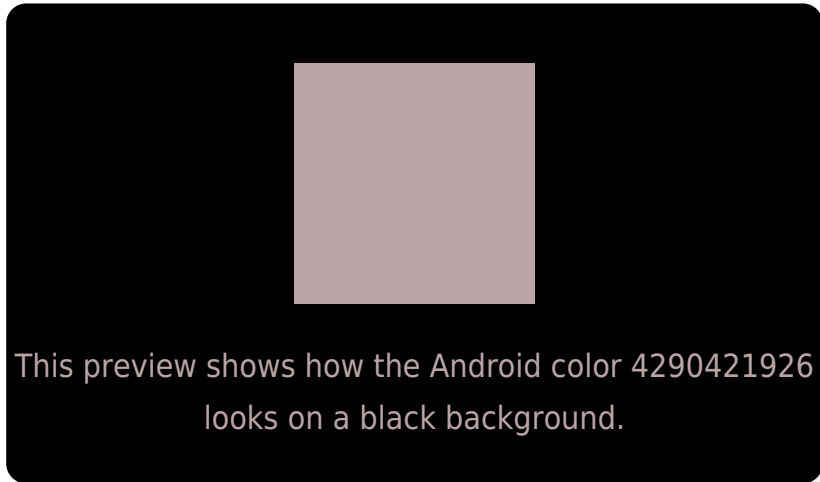
Large Text (above 18pt) WCAG AA × Fail

Any Text WCAG AA × Fail

Large Text (above 18pt) WCAG AAA × Fail

Any Text WCAG AAA × Fail

Black Background



Color Contrast Check

Large Text (above 18pt) WCAG AA ✓ Pass

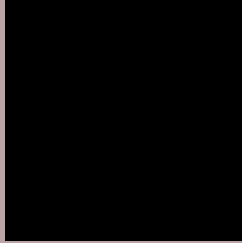
Any Text WCAG AA ✓ Pass

Large Text (above 18pt) WCAG AAA ✓ Pass

Any Text WCAG AAA ✓ Pass

If you want to check with other color combinations, try the [Color Contrast Checker](#).

Android 4290421926 Background



This preview shows how black text looks on a background with the Android color 4290421926.



This preview shows how white text looks on a background with the Android color 4290421926.

Color Blindness Simulation

Color vision deficiency is a very complex topic, and I could not describe the different causes any better than Wikipedia does, so if you want to learn more, you should check out their [article about color blindness](#).

Dichromacy



Original Color

[4290421926](#)

Protanopia

[4289505449](#)

Deuteranopia

[4290487462](#)



Tritanopia
4290487215

Trichromacy



Original Color

4290421926

Protanomaly

4289832872

Deuteranomaly

4290487462

Tritanomaly

4290487212

Monochromacy



Original Color

4290421926

Achromatopsia

4289440683

Achromatomaly

4289767593

CSS Examples

Text

The CSS property to change the color of the text to Android 4290421926 is called "color". The color property can be set on classes, ids or directly on the HTML element.

This example shows how text in the color `rgb(186, 164, 166)` looks like.

```
.text, #text, p{  
    color:rgb(186, 164, 166)  
}
```

If you want to add a text shadow in that color use the text-shadow property, you can generate a text shadow directly with our [CSS Text Shadow Generator](#).

Here you see how black text with a 4 pixel rgb(186, 164, 166) colored shadow looks like.

```
.shadow{ text-shadow: 4px 4px 2px rgb(186, 164, 166) }
```

Border

The CSS property to change the border of an element to Android 4290421926 is called "border". The border property can be set on classes, ids or directly on the HTML element.

This example shows the color as border, it can be applied via the CSS property "border" or "border-color".

```
.border, #border, table{ border:4px solid rgb(186, 164, 166) }
```

If only the border color should be changed use the property `border-color`.

```
.border{ border-color:rgb(186, 164, 166) }
```

If you want to add a box shadow in that color use:

Here you see how a box with a 4 pixel `rgb(186, 164, 166)` colored shadow looks like.

```
.boxshadow{ -moz-box-shadow:4px 4px 4px  
4px rgb(186, 164, 166); -webkit-box-  
shadow:4px 4px 4px 4px rgb(186, 164, 166);  
box-shadow:4px 4px 4px 4px rgb(186, 164,  
166) }
```

Background

The CSS property to change the background color of an element to Android 4290421926 is called "background". The background property can be set on classes, ids or directly on the HTML element.

```
.background, #background, body{  
background: rgb(186, 164, 166) }
```

If only the background color should be changed can be used:

```
.background{ background-color: rgb(186,  
164, 166) }
```

This example shows the color as background, it is applied via the CSS property "background".

To optimize and compress your CSS code, you can use our [online CSS compressor and optimizer](#) based on csstidy. If you want to create a linear or radial gradient as background or border, check our [CSS Gradient Generator](#).

Hey! You found this booklet interesting? Support Converting Colors with the new Membership Option!

The pro membership hides all ads, plus gives you double the colors in the color bucket, and more awesome pro features!

[Learn more, Memberships starting at \\$2.50/m!](#)

**Follow me
on Twitter!**

@ConvertingColor