

Converting Colors

Android(4290423212)

Have a look what the booklet for
Android(4290423212) contains.

Android(4290423212)	3
<i>Conversions</i>	4
<i>Details</i>	6
<i>Harmonies</i>	11
<i>Previews</i>	23
<i>Color Blindness Simulation</i>	26
<i>CSS Examples</i>	29

Color

Android(4290423212)

Conversions

Conversions Part 1

Format	Color
Hex	BAA9AC
RGB	186, 169, 172
RGB Percent	73%, 66%, 67%
CMY	0.2706, 0.3373, 0.3255
CMYK	0.00, 0.09, 0.08, 0.27
HSL	349°, 11%, 70%
HSV	349°, 9%, 73%
XYZ	41.8841, 41.7936, 44.8892
YIQ	174.4250, 9.1690, 4.5370

Conversions

Conversions Part 2

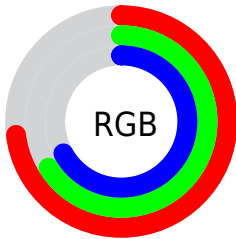
Format	Color
RYB	186, 169, 172
Decimal	12233132
CIELab	70.73, 6.66, 0.68
CIELCh	71, 6.693, 5.822
Yxy	41.7936, 0.3258, 0.3251
Android (android.graphics.Color)	4290423212 (0xFFBAA9AC)
YUV	174.4250, -1.1955, 10.1513
Hunter-Lab	64.6480, 2.5125, 4.0848

Details

The Android color `4290423212` is a light color, and the websafe version is hex `999999`. A complement of this color would be `4289313463`, and the grayscale version is `4289638062`.

A 20% lighter version of the original color is `4294107363`, and `4286936440` is the 20% darker color. If you saturate the color by 10%, you get `4290418333`, and if you desaturate by 10%, it is `4290428091`.

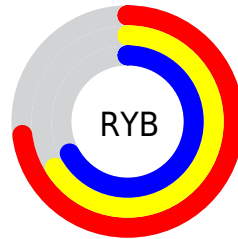
Distribution



Red (73%)

Green (66%)

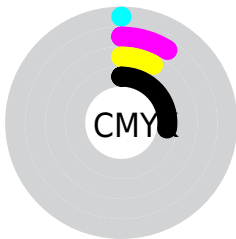
Blue (67%)



Red (73%)

Yellow (66%)

Blue (67%)

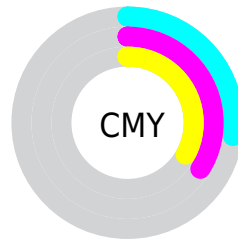


Cyan (0%)

Magenta (9%)

Yellow (8%)

Black (27%)



Cyan (27%)

Magenta (34%)

Yellow (33%)

Brightness & Saturation Gradients

These gradients show how the Android color 4290423212 changes by changing the brightness by 10 percent. The first figure shows a shift by +10% for each color and the second figure -10%.

Similar to the brightness gradients but the following saturation gradients show a change of the Android color 4290423212 by changing the saturation by 10% instead.



4290423212



4290423212

4294967295



4288647057



4294107363



4286936440



4294966783



4285291615



4283647303



4282134065



4280687132



4279435265



4278190080



4290423212



4290423212

 4290418333

 4290428091

 4290413709

 4290432715

 4290408830

 4290437594

 4290404207

 4290442217

 4290399327

 4290445305

 4290394448

 4290445311

 4290389825

 4290384945

 4290380322

Harmonies

Analogous

The Analogous color harmony consists of three colors that are next to each other on the color wheel.



4290161330



4290423212



4290423462

Triad

The Triadic color harmony groups three colors that are evenly spaced from another and form a triangle on the color wheel.



4290423212



4289376163



4288851896

Complementary

The Complementary color scheme is a pair of colors which are on the opposite of each other on the color wheel.



4290423212



4289313463

Split Complementary

Split-complementary colors differ from the complementary color scheme. The scheme consists of three colors, the original color and two neighbors of the complement color.



4288655540



4290423212



4288917672

Square

The Square scheme is like the rectangle color scheme, but the four colors are evenly spaced on the color wheel.



4290423212



4289834401



4288655790



4289244601

Rectangle

The Rectangle color scheme consists of four colors that form a rectangle on the color wheel.



4290423212



4290292387



4288655790



4288721079

Sweetspot

The Sweet Spot groups the original color and five complimentary colors.



4290423212



4294110188



4290226618



4286215798



4294638330



4286216826

Same Dimension

The Same Dimension uses a secret algorithm to generate beautiful new colors.



4290423212



4294105308



4290424489



4284240724



4288413723



4280025093

Inverse Universe

The Inverse Universe completely reimagines the original color for something new.



4290423212



4294105308



4289312186



4284240724



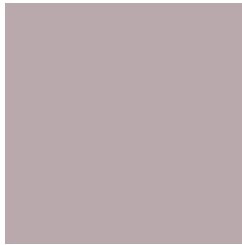
4288413723



4280025093

Previews

White Background



This preview shows how the Android color 4290423212 looks on a white background.

Color Contrast Check

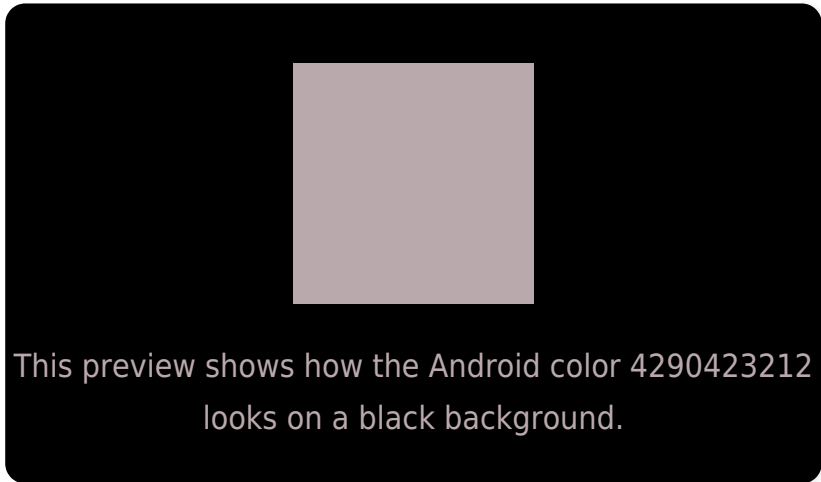
Large Text (above 18pt) WCAG AA × Fail

Any Text WCAG AA × Fail

Large Text (above 18pt) WCAG AAA × Fail

Any Text WCAG AAA × Fail

Black Background



Color Contrast Check

Large Text (above 18pt) WCAG AA ✓ Pass

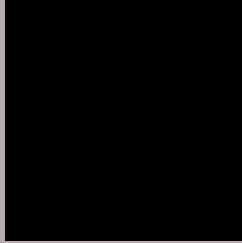
Any Text WCAG AA ✓ Pass

Large Text (above 18pt) WCAG AAA ✓ Pass

Any Text WCAG AAA ✓ Pass

If you want to check with other color combinations, try the [Color Contrast Checker](#).

Android 4290423212 Background



This preview shows how black text looks on a background with the Android color 4290423212.



This preview shows how white text looks on a background with the Android color 4290423212.

Color Blindness Simulation

Color vision deficiency is a very complex topic, and I could not describe the different causes any better than Wikipedia does, so if you want to learn more, you should check out their [article about color blindness](#).

Dichromacy



Original Color


4290423212

Protanopia

4289768622

Deuteranopia

4290685100



Tritanopia
4290488501

Trichromacy



Original Color

4290423212

Protanomaly

4290030509

Deuteranomaly

4290619564

Tritanomaly

4290488498

Monochromacy



Original Color

4290423212

Achromatopsia

4289638062

Achromatomaly

4289899693

CSS Examples

Text

The CSS property to change the color of the text to Android 4290423212 is called "color". The color property can be set on classes, ids or directly on the HTML element.

This example shows how text in the color `rgb(186, 169, 172)` looks like.

```
.text, #text, p{  
    color:rgb(186, 169, 172)  
}
```

If you want to add a text shadow in that color use the text-shadow property, you can generate a text shadow directly with our [CSS Text Shadow Generator](#).

Here you see how black text with a 4 pixel rgb(186, 169, 172) colored shadow looks like.

```
.shadow{ text-shadow: 4px 4px 2px rgb(186, 169, 172) }
```

Border

The CSS property to change the border of an element to Android 4290423212 is called "border". The border property can be set on classes, ids or directly on the HTML element.

This example shows the color as border, it can be applied via the CSS property "border" or "border-color".

```
.border, #border, table{ border:4px solid rgb(186, 169, 172) }
```

If only the border color should be changed use the property `border-color`.

```
.border{ border-color:rgb(186, 169, 172) }
```

If you want to add a box shadow in that color use:

Here you see how a box with a 4 pixel `rgb(186, 169, 172)` colored shadow looks like.

```
.boxshadow{ -moz-box-shadow:4px 4px 4px  
4px rgb(186, 169, 172); -webkit-box-  
shadow:4px 4px 4px 4px rgb(186, 169, 172);  
box-shadow:4px 4px 4px 4px rgb(186, 169,  
172) }
```

Background

The CSS property to change the background color of an element to Android 4290423212 is called "background". The background property can be set on classes, ids or directly on the HTML element.

```
.background, #background, body{  
background: rgb(186, 169, 172) }
```

If only the background color should be changed can be used:

```
.background{ background-color: rgb(186,  
169, 172) }
```

This example shows the color as background, it is applied via the CSS property "background".

To optimize and compress your CSS code, you can use our [online CSS compressor and optimizer](#) based on csstidy. If you want to create a linear or radial gradient as background or border, check our [CSS Gradient Generator](#).

Hey! You found this booklet interesting? Support Converting Colors with the new Membership Option!

The pro membership hides all ads, plus gives you double the colors in the color bucket, and more awesome pro features!

[Learn more, Memberships starting at \\$2.50/m!](#)

**Follow me
on Twitter!**

@ConvertingColor