

Converting Colors

Android(4290476150)

Have a look what the booklet for
Android(4290476150) contains.

Android(4290476150)	3
<i>Conversions</i>	4
<i>Details</i>	6
<i>Harmonies</i>	11
<i>Previews</i>	23
<i>Color Blindness Simulation</i>	26
<i>CSS Examples</i>	29

Color

Android(4290476150)

Conversions

Conversions Part 1

Format	Color
Hex	BB7876
RGB	187, 120, 118
RGB Percent	73%, 47%, 46%
CMY	0.2667, 0.5294, 0.5373
CMYK	0.00, 0.36, 0.37, 0.27
HSL	2°, 34%, 60%
HSV	2°, 37%, 73%
XYZ	30.4800, 25.3057, 20.4176
YIQ	139.8050, 40.5740, 13.5820

Conversions

Conversions Part 2

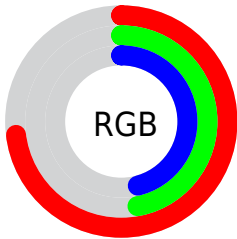
Format	Color
R _Y B	187, 120, 118
Decimal	12286070
CIE Lab	57.37, 25.98, 12.03
CIE LCh	57, 28.629, 24.844
Yxy	25.3057, 0.4000, 0.3321
Android (android.graphics.Color)	4290476150 (0xFFBB7876)
YUV	139.8050, -10.7499, 41.3900
Hunter-Lab	50.3048, 20.1208, 11.1489

Details

The Android color `4290476150` is a dark color, and the websafe version is hex `996666`. A complement of this color would be `4285970875`, and the grayscale version is `4287401100`.

A 20% lighter version of the original color is `4294290858`, and `4286858822` is the 20% darker color. If you saturate the color by 10%, you get `4290471523`, and if you desaturate by 10%, it is `4290480777`.

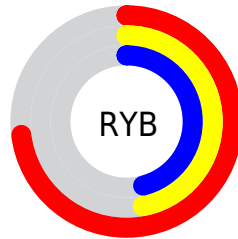
Distribution



Red (73%)

Green (47%)

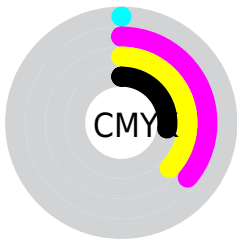
Blue (46%)



Red (73%)

Yellow (47%)

Blue (46%)

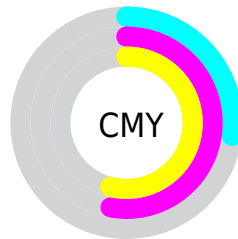


Cyan (0%)

Magenta (36%)

Yellow (37%)

Black (27%)



Cyan (27%)

Magenta (53%)

Yellow (54%)

Brightness & Saturation Gradients

These gradients show how the Android color 4290476150 changes by changing the brightness by 10 percent. The first figure shows a shift by +10% for each color and the second figure -10%.

Similar to the brightness gradients but the following saturation gradients show a change of the Android color 4290476150 by changing the saturation by 10% instead.

 4290476150

 4290476150

4294967295

 4288634717

 4294290858

 4286858822

 4294953413

 4285083439

 4294960609

 4283373595

4294967294

 4281729280

 4280025089

 4278190080

 4290476150

 4290476150

 4290471523

 4290480777

 4290466897

 4290485403

 4290462270

 4290490030

 4290457387

 4290494913

 4290452761

 4290499540

 4290448134

 4290504166

 4290446592

 4290508793

 4290510847

Harmonies

Analogous

The Analogous color harmony consists of three colors that are next to each other on the color wheel.



4290213775



4290476150



4289887842

Triad

The Triadic color harmony groups three colors that are evenly spaced from another and form a triangle on the color wheel.



4290476150



4285043820



4284583355

Complementary

The Complementary color scheme is a pair of colors which are on the opposite of each other on the color wheel.



4290476150



4285970875

Split Complementary

Split-complementary colors differ from the complementary color scheme. The scheme consists of three colors, the original color and two neighbors of the complement color.



4282225842



4290476150



4283078532

Square

The Square scheme is like the rectangle color scheme, but the four colors are evenly spaced on the color wheel.



4290476150



4286943068



4281571230



4287071671

Rectangle

The Rectangle color scheme consists of four colors that form a rectangle on the color wheel.



4290476150



4289102938



4281571230



4283732153

Sweetspot

The Sweet Spot groups the original color and five complimentary colors.



4290476150



4294105304



4290475706



4286212970



4294638330



4286216826

Same Dimension

The Same Dimension uses a secret algorithm to generate beautiful new colors.



4290476150



4294085512



4290484854



4284372309



4288546048



4280221952

Inverse Universe

The Inverse Universe completely reimagines the original color for something new.



4285970875



4287164402



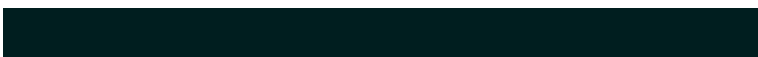
4285962171



4283784798



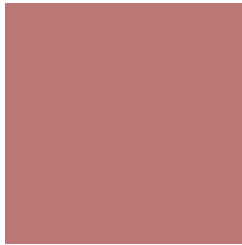
4278229662



4278197791

Previews

White Background



This preview shows how the Android color 4290476150 looks on a white background.

Color Contrast Check

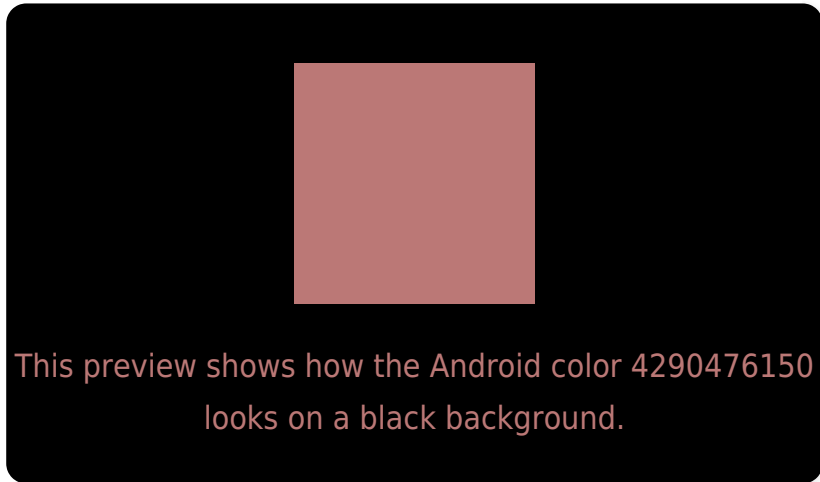
Large Text (above 18pt) WCAG AA ✓ Pass

Any Text WCAG AA ✗ Fail

Large Text (above 18pt) WCAG AAA ✗ Fail

Any Text WCAG AAA ✗ Fail

Black Background



Color Contrast Check

Large Text (above 18pt) WCAG AA ✓ Pass

Any Text WCAG AA ✓ Pass

Large Text (above 18pt) WCAG AAA ✓ Pass

Any Text WCAG AAA × Fail

If you want to check with other color combinations, try the [Color Contrast Checker](#).

Android 4290476150 Background



This preview shows how black text looks on a background with the Android color 4290476150.



This preview shows how white text looks on a background with the Android color 4290476150.

Color Blindness Simulation

Color vision deficiency is a very complex topic, and I could not describe the different causes any better than Wikipedia does, so if you want to learn more, you should check out their [article about color blindness](#).

Dichromacy



Original Color


4290476150

Protanopia

4287597183

Deuteranopia

4288644468



Tritanopia
4290541439

Trichromacy



Original Color
4290476150

Protanomaly
4288643964

Deuteranomaly
4289298549

Tritanomaly
4290541436

Monochromacy



Original Color
4290476150

Achromatopsia
4287401100

Achromatomaly
4288513412

CSS Examples

Text

The CSS property to change the color of the text to Android 4290476150 is called "color". The color property can be set on classes, ids or directly on the HTML element.

This example shows how text in the color `rgb(187, 120, 118)` looks like.

```
.text, #text, p{  
    color:rgb(187, 120, 118)  
}
```

If you want to add a text shadow in that color use the text-shadow property, you can generate a text shadow directly with our [CSS Text Shadow Generator](#).

Here you see how black text with a 4 pixel rgb(187, 120, 118) colored shadow looks like.

```
.shadow{ text-shadow: 4px 4px 2px rgb(187, 120, 118) }
```

Border

The CSS property to change the border of an element to Android 4290476150 is called "border". The border property can be set on classes, ids or directly on the HTML element.

This example shows the color as border, it can be applied via the CSS property "border" or "border-color".

```
.border, #border, table{ border:4px solid rgb(187, 120, 118) }
```

If only the border color should be changed use the property `border-color`.

```
.border{ border-color:rgb(187, 120, 118) }
```

If you want to add a box shadow in that color use:

Here you see how a box with a 4 pixel `rgb(187, 120, 118)` colored shadow looks like.

```
.boxshadow{ -moz-box-shadow:4px 4px 4px  
4px rgb(187, 120, 118); -webkit-box-  
shadow:4px 4px 4px 4px rgb(187, 120, 118);  
box-shadow:4px 4px 4px 4px rgb(187, 120,  
118) }
```

Background

The CSS property to change the background color of an element to Android 4290476150 is called "background". The background property can be set on classes, ids or directly on the HTML element.

```
.background, #background, body{  
background: rgb(187, 120, 118) }
```

If only the background color should be changed can be used:

```
.background{ background-color: rgb(187,  
120, 118) }
```

This example shows the color as background, it is applied via the CSS property "background".

To optimize and compress your CSS code, you can use our [online CSS compressor and optimizer](#) based on csstidy. If you want to create a linear or radial gradient as background or border, check our [CSS Gradient Generator](#).

Hey! You found this booklet interesting? Support Converting Colors with the new Membership Option!

The pro membership hides all ads, plus gives you double the colors in the color bucket, and more awesome pro features!

[Learn more, Memberships starting at \\$2.50/m!](#)

**Follow me
on Twitter!**

@ConvertingColor