

# Converting Colors

Android(4290479235)

Have a look what the booklet for  
Android(4290479235) contains.

<b>Android(4290479235)</b> .....	3
<b><i>Conversions</i></b> .....	4
<b><i>Details</i></b> .....	6
<b><i>Harmonies</i></b> .....	11
<b><i>Previews</i></b> .....	23
<b><i>Color Blindness Simulation</i></b> .....	26
<b><i>CSS Examples</i></b> .....	29

# **Color**

**Android(4290479235)**

# Conversions

## Conversions Part 1

Format	Color
Hex	BB8483
RGB	187, 132, 131
RGB Percent	73%, 52%, 51%
CMY	0.2667, 0.4824, 0.4863
CMYK	0.00, 0.29, 0.30, 0.27
HSL	1°, 29%, 62%
HSV	1°, 30%, 73%
XYZ	32.8415, 28.7060, 25.2826
YIQ	148.3310, 33.1010, 11.3490

# Conversions

## Conversions Part 2

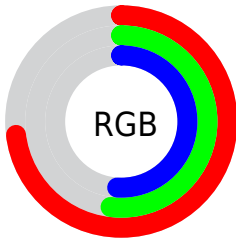
<b>Format</b>	<b>Color</b>
<a href="#">RYB</a>	<a href="#">187, 132, 131</a>
Decimal	<a href="#">12289155</a>
CIELab	<a href="#">60.52, 21.03, 9.01</a>
CIELCh	<a href="#">61, 22.872, 23.186</a>
Yxy	<a href="#">28.7060, 0.3782, 0.3306</a>
Android (android.graphics.Color)	<a href="#">4290479235</a> (0xFFBB8483)
YUV	<a href="#">148.3310, -8.5442, 33.9127</a>
Hunter-Lab	<a href="#">53.5780, 15.6530, 9.5266</a>

# Details

The Android color `4290479235` is a light color, and the websafe version is hex `CC9999`. A complement of this color would be `4286823099`, and the grayscale version is `4287927444`.

A 20% lighter version of the original color is `4294228408`, and `4286861906` is the 20% darker color. If you saturate the color by 10%, you get `4290474608`, and if you desaturate by 10%, it is `4290483862`.

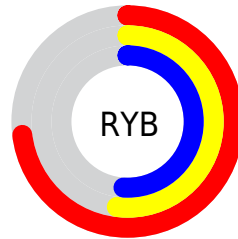
# Distribution



Red (73%)

Green (52%)

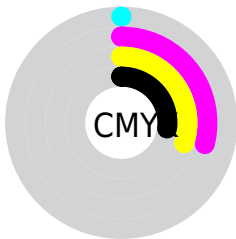
Blue (51%)



Red (73%)

Yellow (52%)

Blue (51%)

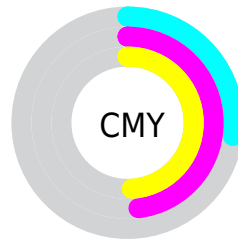


Cyan (0%)

Magenta (29%)

Yellow (30%)

Black (27%)



Cyan (27%)

Magenta (48%)

Yellow (49%)

# Brightness & Saturation Gradients

These gradients show how the Android color 4290479235 changes by changing the brightness by 10 percent. The first figure shows a shift by +10% for each color and the second figure -10%.

Similar to the brightness gradients but the following saturation gradients show a change of the Android color 4290479235 by changing the saturation by 10% instead.





4290479235



4290479235

4294967295



4288637802



4294228408



4286861906



4294956500



4285151803



4294963952



4283507749



4281863696



4280549377



4278190080



4290479235



4290479235



4290474608



4290483862

 4290469726

 4290488744

 4290465099

 4290493371

 4290460472

 4290497998

 4290455589

 4290502880

 4290450963

 4290507507

 4290446080

 4290510847

# Harmonies

## Analogous

The Analogous color harmony consists of three colors that are next to each other on the color wheel.



4290217111



4290479235



4290021490

# Triad

The Triadic color harmony groups three colors that are evenly spaced from another and form a triangle on the color wheel.



4290479235



4286159481



4285765050

# Complementary

The Complementary color scheme is a pair of colors which are on the opposite of each other on the color wheel.



4290479235



4286823099

# Split Complementary

Split-complementary colors differ from the complementary color scheme. The scheme consists of three colors, the original color and two neighbors of the complement color.



4284258994



4290479235



4284784012

# Square

The Square scheme is like the rectangle color scheme, but the four colors are evenly spaced on the color wheel.



4290479235



4287665773



4283932065



4287598263

# Rectangle

The Rectangle color scheme consists of four colors that form a rectangle on the color wheel.



4290479235



4289432940



4283932065



4285175736

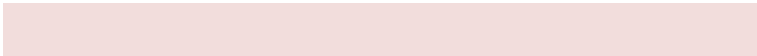


# Sweetspot

The Sweet Spot groups the original color and five complimentary colors.



4290479235



4294106588



4290479034



4286213485



4294638330



4286216826



# Same Dimension

The Same Dimension uses a secret algorithm to generate beautiful new colors.



4290479235



4294090139



4290486403



4284372309



4288545536



4280221952



# Inverse Universe

The Inverse Universe completely reimagines the original color for something new.



4286823099



4288410098



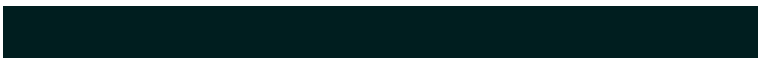
4286815931



4283784798



4278229918

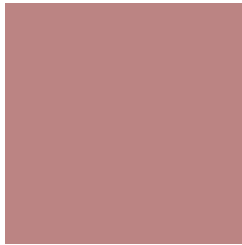


4278197791



# Previews

## White Background



This preview shows how the Android color 4290479235 looks on a white background.

## Color Contrast Check

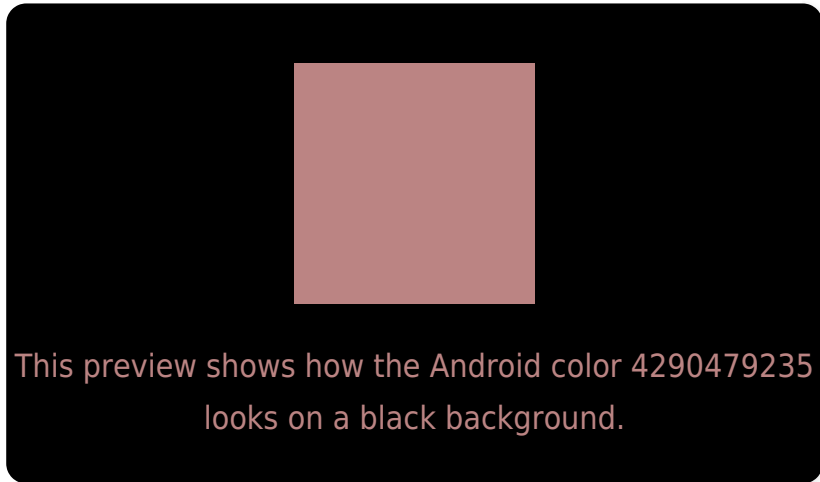
Large Text (above 18pt) WCAG AA ✓ Pass

Any Text WCAG AA ✗ Fail

Large Text (above 18pt) WCAG AAA ✗ Fail

Any Text WCAG AAA ✗ Fail

# Black Background



## Color Contrast Check

Large Text (above 18pt) WCAG AA ✓ Pass

Any Text WCAG AA ✓ Pass

Large Text (above 18pt) WCAG AAA ✓ Pass

Any Text WCAG AAA × Fail

If you want to check with other color combinations, try the [Color Contrast Checker](#).



# Android 4290479235 Background



This preview shows how black text looks on a background with the Android color 4290479235.



This preview shows how white text looks on a background with the Android color 4290479235.

# Color Blindness Simulation

Color vision deficiency is a very complex topic, and I could not describe the different causes any better than Wikipedia does, so if you want to learn more, you should check out their [article about color blindness](#).

## Dichromacy





# Trichromacy



**Original Color**  
4290479235

**Protanomaly**  
4288974215

**Deuteranomaly**  
4289628802

**Tritanomaly**  
4290544521

# Monochromacy



**Original Color**  
4290479235

**Achromatopsia**  
4287927444

**Achromatomaly**  
4288843406

# CSS Examples

## Text

The CSS property to change the color of the text to Android 4290479235 is called "color". The color property can be set on classes, ids or directly on the HTML element.

This example shows how text in the color `rgb(187, 132, 131)` looks like.

```
.text, #text, p{  
    color:rgb(187, 132, 131)  
}
```

If you want to add a text shadow in that color use the text-shadow property, you can generate a text shadow directly with our [CSS Text Shadow Generator](#).

Here you see how black text with a 4 pixel rgb(187, 132, 131) colored shadow looks like.

```
.shadow{ text-shadow: 4px 4px 2px rgb(187, 132, 131) }
```

## Border

The CSS property to change the border of an element to Android 4290479235 is called "border". The border property can be set on classes, ids or directly on the HTML element.

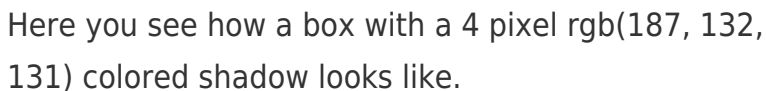
This example shows the color as border, it can be applied via the CSS property "border" or "border-color".

```
.border, #border, table{ border:4px solid rgb(187, 132, 131) }
```

If only the border color should be changed use the property `border-color`.

```
.border{ border-color:rgb(187, 132, 131) }
```

If you want to add a box shadow in that color use:



Here you see how a box with a 4 pixel `rgb(187, 132, 131)` colored shadow looks like.

```
.boxshadow{ -moz-box-shadow:4px 4px 4px  
4px rgb(187, 132, 131); -webkit-box-  
shadow:4px 4px 4px 4px rgb(187, 132, 131);  
box-shadow:4px 4px 4px 4px rgb(187, 132,  
131) }
```

# Background

The CSS property to change the background color of an element to Android 4290479235 is called "background". The background property can be set on classes, ids or directly on the HTML element.

```
.background, #background, body{  
background: rgb(187, 132, 131) }
```

If only the background color should be changed can be used:

```
.background{ background-color: rgb(187,  
132, 131) }
```

This example shows the color as background, it is applied via the CSS property "background".

To optimize and compress your CSS code, you can use our [online CSS compressor and optimizer](#) based on csstidy. If you want to create a linear or radial gradient as background or border, check our [CSS Gradient Generator](#).



Hey! You found this booklet interesting? Support Converting Colors with the new Membership Option!

The pro membership hides all ads, plus gives you double the colors in the color bucket, and more awesome pro features!

**[Learn more, Memberships starting at \\$2.50/m!](#)**

**Follow me  
on Twitter!**

@ConvertingColor