

Converting Colors

Android(4290479493)

Have a look what the booklet for
Android(4290479493) contains.

Android(4290479493)	3
<i>Conversions</i>	4
<i>Details</i>	6
<i>Harmonies</i>	11
<i>Previews</i>	23
<i>Color Blindness Simulation</i>	26
<i>CSS Examples</i>	29

Color

Android(4290479493)

Conversions

Conversions Part 1

Format	Color
Hex	BB8585
RGB	187, 133, 133
RGB Percent	73%, 52%, 52%
CMY	0.2667, 0.4784, 0.4784
CMYK	0.00, 0.29, 0.29, 0.27
HSL	0°, 28%, 63%
HSV	0°, 29%, 73%
XYZ	33.1147, 29.0333, 26.0490
YIQ	149.1460, 32.1840, 11.4480

Conversions

Conversions Part 2

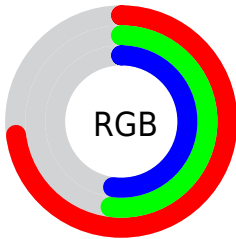
Format	Color
RYB	187, 133, 133
Decimal	12289413
CIELab	60.81, 20.75, 8.28
CIElCh	61, 22.336, 21.746
Yxy	29.0333, 0.3755, 0.3292
Android (android.graphics.Color)	4290479493 (0xFFBB8585)
YUV	149.1460, -7.9600, 33.1980
Hunter-Lab	53.8826, 15.4065, 9.0547

Details

The Android color `4290479493` is a light color, and the websafe version is hex `CC9999`. A complement of this color would be `4286954427`, and the grayscale version is `4287993237`.

A 20% lighter version of the original color is `4294228666`, and `4286862164` is the 20% darker color. If you saturate the color by 10%, you get `4290474610`, and if you desaturate by 10%, it is `4290484376`.

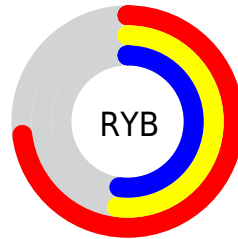
Distribution



Red (73%)

Green (52%)

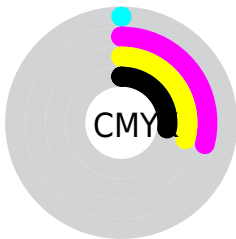
Blue (52%)



Red (73%)

Yellow (52%)

Blue (52%)

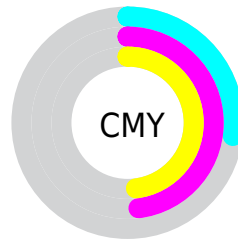


Cyan (0%)

Magenta (29%)

Yellow (29%)

Black (27%)



Cyan (27%)

Magenta (48%)

Yellow (48%)

Brightness & Saturation Gradients

These gradients show how the Android color 4290479493 changes by changing the brightness by 10 percent. The first figure shows a shift by +10% for each color and the second figure -10%.

Similar to the brightness gradients but the following saturation gradients show a change of the Android color 4290479493 by changing the saturation by 10% instead.



4290479493



4290479493

4294967295



4288638060



4294228666



4286862164



4294956758



4285152061



4294964210



4283508007



4281863954



4280549376



4278190080



4290479493



4290479493



4290474610



4290484376

 4290469984

 4290489002

 4290465101

 4290493885

 4290460218

 4290498768

 4290455592

 4290503651

 4290450709

 4290508277

 4290445826

 4290510847

 4290445312

Harmonies

Analogous

The Analogous color harmony consists of three colors that are next to each other on the color wheel.



4290151833



4290479493



4290087285

Triad

The Triadic color harmony groups three colors that are evenly spaced from another and form a triangle on the color wheel.



4290479493



4286356346



4285765305

Complementary

The Complementary color scheme is a pair of colors which are on the opposite of each other on the color wheel.



4290479493



4286954427

Split Complementary

Split-complementary colors differ from the complementary color scheme. The scheme consists of three colors, the original color and two neighbors of the complement color.



4284390321



4290479493



4284915084

Square

The Square scheme is like the rectangle color scheme, but the four colors are evenly spaced on the color wheel.



4290479493



4287796846



4284128929



4287598775

Rectangle

The Rectangle color scheme consists of four colors that form a rectangle on the color wheel.



4290479493



4289498478



4284128929



4285241528

Sweetspot

The Sweet Spot groups the original color and five complimentary colors.



4290479493



4294106332



4290479547



4286213485



4294638330



4286216826

Same Dimension

The Same Dimension uses a secret algorithm to generate beautiful new colors.



4290479493



4294090141



4290486405



4284372309



4288544768



4280221696

Inverse Universe

The Inverse Universe completely reimagines the original color for something new.



4286954427



4288541426



4286947515



4283784798



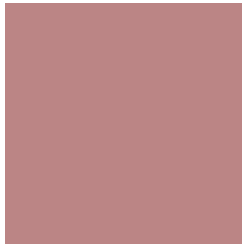
4278230686



4278198047

Previews

White Background



This preview shows how the Android color 4290479493 looks on a white background.

Color Contrast Check

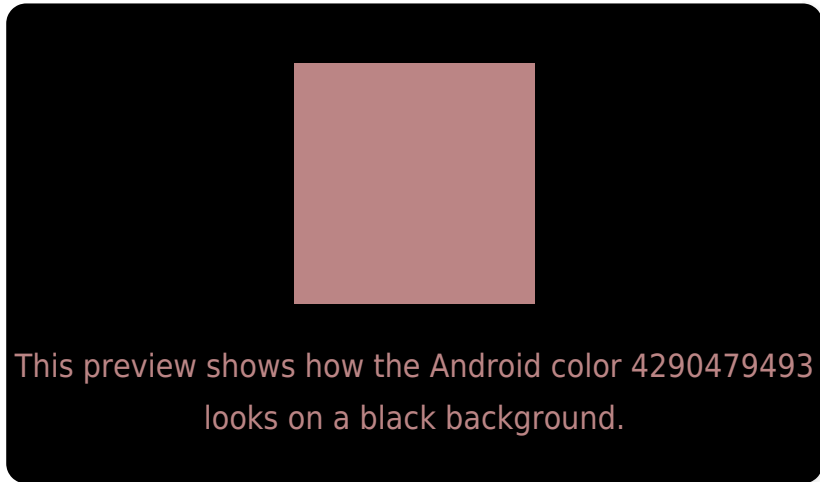
Large Text (above 18pt) WCAG AA ✓ Pass

Any Text WCAG AA ✗ Fail

Large Text (above 18pt) WCAG AAA ✗ Fail

Any Text WCAG AAA ✗ Fail

Black Background



Color Contrast Check

Large Text (above 18pt) WCAG AA ✓ Pass

Any Text WCAG AA ✓ Pass

Large Text (above 18pt) WCAG AAA ✓ Pass

Any Text WCAG AAA × Fail

If you want to check with other color combinations, try the [Color Contrast Checker](#).

Android 4290479493 Background



This preview shows how black text looks on a background with the Android color 4290479493.



This preview shows how white text looks on a background with the Android color 4290479493.

Color Blindness Simulation

Color vision deficiency is a very complex topic, and I could not describe the different causes any better than Wikipedia does, so if you want to learn more, you should check out their [article about color blindness](#).

Dichromacy



Original Color
4290479493

Protanopia
4288123532

Deuteranopia
4289171075



Tritanopia
4290544782

Trichromacy



Original Color
4290479493

Protanomaly
4288974217

Deuteranomaly
4289629060

Tritanomaly
4290544779

Monochromacy



Original Color
4290479493

Achromatopsia
4287993237

Achromatomaly
4288909199

CSS Examples

Text

The CSS property to change the color of the text to Android 4290479493 is called "color". The color property can be set on classes, ids or directly on the HTML element.

This example shows how text in the color `rgb(187, 133, 133)` looks like.

```
.text, #text, p{  
    color:rgb(187, 133, 133)  
}
```

If you want to add a text shadow in that color use the text-shadow property, you can generate a text shadow directly with our [CSS Text Shadow Generator](#).

Here you see how black text with a 4 pixel rgb(187, 133, 133) colored shadow looks like.

```
.shadow{ text-shadow: 4px 4px 2px rgb(187, 133, 133) }
```

Border

The CSS property to change the border of an element to Android 4290479493 is called "border". The border property can be set on classes, ids or directly on the HTML element.

This example shows the color as border, it can be applied via the CSS property "border" or "border-color".

```
.border, #border, table{ border:4px solid rgb(187, 133, 133) }
```

If only the border color should be changed use the property `border-color`.

```
.border{ border-color:rgb(187, 133, 133) }
```

If you want to add a box shadow in that color use:

Here you see how a box with a 4 pixel `rgb(187, 133, 133)` colored shadow looks like.

```
.boxshadow{ -moz-box-shadow:4px 4px 4px  
4px rgb(187, 133, 133); -webkit-box-  
shadow:4px 4px 4px 4px rgb(187, 133, 133);  
box-shadow:4px 4px 4px 4px rgb(187, 133,  
133) }
```

Background

The CSS property to change the background color of an element to Android 4290479493 is called "background". The background property can be set on classes, ids or directly on the HTML element.

```
.background, #background, body{  
background: rgb(187, 133, 133) }
```

If only the background color should be changed can be used:

```
.background{ background-color: rgb(187,  
133, 133) }
```

This example shows the color as background, it is applied via the CSS property "background".

To optimize and compress your CSS code, you can use our [online CSS compressor and optimizer](#) based on csstidy. If you want to create a linear or radial gradient as background or border, check our [CSS Gradient Generator](#).

Hey! You found this booklet interesting? Support Converting Colors with the new Membership Option!

The pro membership hides all ads, plus gives you double the colors in the color bucket, and more awesome pro features!

[Learn more, Memberships starting at \\$2.50/m!](#)

**Follow me
on Twitter!**

@ConvertingColor