

# Converting Colors

Android(4290480006)

Have a look what the booklet for  
Android(4290480006) contains.

|  |    |
|--|----|
| <b>Android(4290480006)</b> .....               | 3  |
| <b><i>Conversions</i></b> .....                | 4  |
| <b><i>Details</i></b> .....                    | 6  |
| <b><i>Harmonies</i></b> .....                  | 11 |
| <b><i>Previews</i></b> .....                   | 23 |
| <b><i>Color Blindness Simulation</i></b> ..... | 26 |
| <b><i>CSS Examples</i></b> .....               | 29 |

# **Color**

**Android(4290480006)**

# Conversions

## Conversions Part 1

| Format      | Color                      |
|-------------|----------------------------|
| Hex         | BB8786                     |
| RGB         | 187, 135, 134              |
| RGB Percent | 73%, 53%, 53%              |
| CMY         | 0.2667, 0.4706, 0.4745     |
| CMYK        | 0.00, 0.28, 0.28, 0.27     |
| HSL         | 1°, 28%, 63%               |
| HSV         | 1°, 28%, 73%               |
| XYZ         | 33.4606, 29.6140, 26.5068  |
| YIQ         | 150.4340, 31.3130, 10.7130 |

# Conversions

## Conversions Part 2

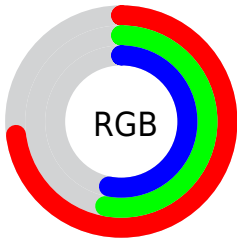
| Format                              | Color                                       |
|-------------------------------------|---|
| <a href="#">RYB</a>                 | <a href="#">187, 135, 134</a>               |
| Decimal                             | <a href="#">12289926</a>                    |
| CIELab                              | <a href="#">61.32, 19.77, 8.43</a>          |
| CIELCh                              | <a href="#">61, 21.496, 23.087</a>          |
| Yxy                                 | <a href="#">29.6140, 0.3735, 0.3306</a>     |
| Android<br>(android.graphics.Color) | <a href="#">4290480006<br/>(0xFFBB8786)</a> |
| YUV                                 | <a href="#">150.4340, -8.1020, 32.0684</a>  |
| Hunter-Lab                          | <a href="#">54.4187, 14.5219, 9.2136</a>    |

# Details

The Android color `4290480006` is a light color, and the websafe version is hex `CC9999`. A complement of this color would be `4287019707`, and the grayscale version is `4288059030`.

A 20% lighter version of the original color is `4294229435`, and `4286862676` is the 20% darker color. If you saturate the color by 10%, you get `4290475379`, and if you desaturate by 10%, it is `4290484633`.

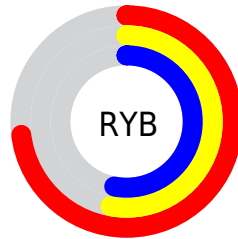
# Distribution



Red (73%)

Green (53%)

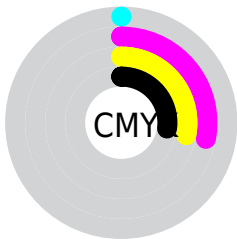
Blue (53%)



Red (73%)

Yellow (53%)

Blue (53%)

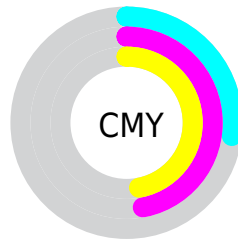


Cyan (0%)

Magenta (28%)

Yellow (28%)

Black (27%)



Cyan (27%)

Magenta (47%)

Yellow (47%)

# Brightness & Saturation Gradients

These gradients show how the Android color 4290480006 changes by changing the brightness by 10 percent. The first figure shows a shift by +10% for each color and the second figure -10%.

Similar to the brightness gradients but the following saturation gradients show a change of the Android color 4290480006 by changing the saturation by 10% instead.





4290480006



4290480006

4294967295



4288638317



4294229435



4286862676



4294957271



4285152573



4294964723



4283508520



4281864467



4280549376



4278190080



4290480006



4290480006



4290475379



4290484633

 4290470497

 4290489515

 4290465870

 4290494142

 4290461243

 4290498769

 4290456361

 4290503652

 4290451734

 4290508278

 4290447107

 4290510847

 4290446336

# Harmonies

## Analogous

The Analogous color harmony consists of three colors that are next to each other on the color wheel.



4290217881



4290480006



4290087798

# Triad

The Triadic color harmony groups three colors that are evenly spaced from another and form a triangle on the color wheel.



4290480006



4286422141



4286027705

# Complementary

The Complementary color scheme is a pair of colors which are on the opposite of each other on the color wheel.



4290480006



4287019707

# Split Complementary

Split-complementary colors differ from the complementary color scheme. The scheme consists of three colors, the original color and two neighbors of the complement color.



4284718258



4290480006



4285112207

# Square

The Square scheme is like the rectangle color scheme, but the four colors are evenly spaced on the color wheel.



4290480006



4287862641



4284391330



4287730103

# Rectangle

The Rectangle color scheme consists of four colors that form a rectangle on the color wheel.



4290480006



4289498992



4284391330



4285503928

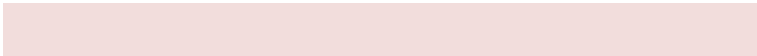


# Sweetspot

The Sweet Spot groups the original color and five complimentary colors.



4290480006



4294106588



4290479802



4286213485



4294638330



4286216826



# Same Dimension

The Same Dimension uses a secret algorithm to generate beautiful new colors.



4290480006



4294091168



4290486662



4284372309



4288545536



4280221952



# Inverse Universe

The Inverse Universe completely reimagines the original color for something new.



4287019707



4288737778



4287013051



4283784798



4278229918

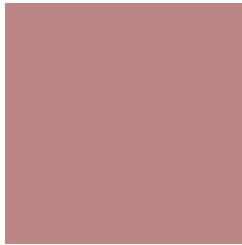


4278197791



# Previews

## White Background



This preview shows how the Android color 4290480006 looks on a white background.

## Color Contrast Check

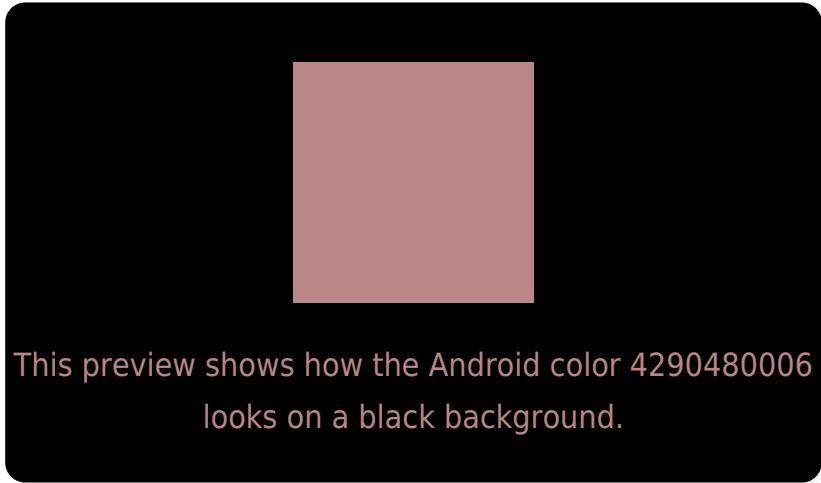
Large Text (above 18pt) WCAG AA ✓ Pass

Any Text WCAG AA ✗ Fail

Large Text (above 18pt) WCAG AAA ✗ Fail

Any Text WCAG AAA ✗ Fail

# Black Background



## Color Contrast Check

Large Text (above 18pt) WCAG AA ✓ Pass

Any Text WCAG AA ✓ Pass

Large Text (above 18pt) WCAG AAA ✓ Pass

Any Text WCAG AAA × Fail

If you want to check with other color combinations, try the [Color Contrast Checker](#).



# Android 4290480006 Background



This preview shows how black text looks on a background with the Android color 4290480006.



This preview shows how white text looks on a background with the Android color 4290480006.

# Color Blindness Simulation

Color vision deficiency is a very complex topic, and I could not describe the different causes any better than Wikipedia does, so if you want to learn more, you should check out their [article about color blindness](#).

## Dichromacy



**Original Color**  
4290480006

**Protanopia**  
4288255117

**Deuteranopia**  
4289236869



# Trichromacy



**Original Color**

4290480006

**Protanomaly**

4289040266

**Deuteranomaly**

4289694853

**Tritanomaly**

4290545292

# Monochromacy



**Original Color**

4290480006

**Achromatopsia**

4288059030

**Achromatomaly**

4288909712

# CSS Examples

## Text

The CSS property to change the color of the text to Android 4290480006 is called "color". The color property can be set on classes, ids or directly on the HTML element.

This example shows how text in the color `rgb(187, 135, 134)` looks like.

```
.text, #text, p{  
    color:rgb(187, 135, 134)  
}
```

If you want to add a text shadow in that color use the text-shadow property, you can generate a text shadow directly with our [CSS Text Shadow Generator](#).

Here you see how black text with a 4 pixel rgb(187, 135, 134) colored shadow looks like.

```
.shadow{ text-shadow: 4px 4px 2px rgb(187, 135, 134) }
```

## Border

The CSS property to change the border of an element to Android 4290480006 is called "border". The border property can be set on classes, ids or directly on the HTML element.

This example shows the color as border, it can be applied via the CSS property "border" or "border-color".

```
.border, #border, table{ border:4px solid rgb(187, 135, 134) }
```

If only the border color should be changed use the property `border-color`.

```
.border{ border-color:rgb(187, 135, 134) }
```

If you want to add a box shadow in that color use:

Here you see how a box with a 4 pixel `rgb(187, 135, 134)` colored shadow looks like.

```
.boxshadow{ -moz-box-shadow:4px 4px 4px 4px rgb(187, 135, 134); -webkit-box-shadow:4px 4px 4px 4px rgb(187, 135, 134); box-shadow:4px 4px 4px 4px rgb(187, 135, 134) }
```

# Background

The CSS property to change the background color of an element to Android 4290480006 is called "background". The background property can be set on classes, ids or directly on the HTML element.

```
.background, #background, body{  
background: rgb(187, 135, 134) }
```

If only the background color should be changed can be used:

```
.background{ background-color: rgb(187,  
135, 134) }
```

This example shows the color as background, it is applied via the CSS property "background".

To optimize and compress your CSS code, you can use our [online CSS compressor and optimizer](#) based on csstidy. If you want to create a linear or radial gradient as background or border, check our [CSS Gradient Generator](#).



Hey! You found this booklet interesting? Support Converting Colors with the new Membership Option!

The pro membership hides all ads, plus gives you double the colors in the color bucket, and more awesome pro features!

**[Learn more, Memberships starting at \\$2.50/m!](#)**

**Follow me  
on Twitter!**

@ConvertingColor